



**India Meteorological Department
(Ministry of Earth Sciences)**

BULLETIN NO. : 35-19(BOB/04/2020)

TIME OF ISSUE: 1900 HOURS IST

DATED: 26.11.2020

FROM: INDIA METEOROLOGICAL DEPARTMENT (FAX NO. 24643965/24699216/24623220)

TO: CONTROL ROOM, NDM, MINISTRY OF HOME AFFAIRS (FAX.NO. 23093750)
CONTROL ROOM NDMA (FAX.NO. 26701729)
CABINET SECRETARIAT (FAX.NO.23012284, 23018638)
PS TO HON'BLE MINISTER FOR S & T AND EARTH SCIENCES (FAX NO.23316745)
SECRETARY, MOES, (FAX NO. 24629777)
H.Q. (INTEGRATED DEFENCE STAFF AND CDS) (FAX NO. 23005137/23005147)
DIRECTOR GENERAL, DOORDARSHAN (23385843)
DIRECTOR GENERAL, AIR (23421105, 23421219)
PIB MOES (FAX NO. 23389042)
UNI (FAX NO. 23355841)
D.G. NATIONAL DISASTER RESPONSE FORCE (NDRF) (FAX NO. 26105912, 2436 3260)
DIRECTOR, PUNCTUALITY, INDIAN RAILWAYS (FAX NO. 23388503)
CHIEF SECRETARY, KERALA (FAX NO. 0471-2327176)
CHIEF SECRETARY, ANDAMAN & NICOBAR ISLANDS (FAX NO. 03192- 232656)
CHIEF SECRETARY, WEST BENGAL (FAX NO. 033-22144328)
CHIEF SECRETARY, GOVT. OF ODISHA (FAX NO. 0674 -2536660)
CHIEF SECRETARY, ANDHRA PRADESH (FAX NO. 0863-2441029, 08645-246600)
CHIEF SECRETARY, TAMIL NADU (FAX NO. 044-25672304)
CHIEF SECRETARY, PUDUCHERRY (FAX NO. 0413-2337575, 2334145)
CHIEF SECRETARY, TELANGANA (FAX NO. 040-23453700)

Sub: Deep Depression over South Rayalaseema & neighbourhood

The **Deep Depression over South Rayalaseema & neighbourhood** moved nearly northwards with a speed of 13 kmph during past six hours and lay centred at 1730 hrs IST of 26th November, 2020 over South Rayalaseema & neighbourhood near Lat. 13.6°N and Long 79.3°E, about 30 Km west-southwest of Tirupathi and 115 Km west-northwest of Chennai. It is very likely to move nearly northwards, **weaken into a Depression during next 06 hours** and into a Low Pressure Area during subsequent 12 hours.

Warnings:

(i) Rainfall

Under its influence, rainfall at most/many places with heavy to very heavy falls at isolated places likely to occur over Chittoor, Kurnool, Prakasam; Cuddappa & Nellore districts of Andhra Pradesh and adjoining southeast Telangana on 26th November. Heavy rainfall at isolated places very likely over adjoining districts of north Tamilnadu, remaining districts of Andhra Pradesh and southeast Telangana.

Sub-Divisions	26 Nov 2020*	27 Nov 2020*
Coastal Andhra Pradesh	Rainfall at most places with isolated heavy to very heavy falls	Rainfall at many places with heavy rainfall at isolated places

Spatial rainfall distribution: Isolated: ≤25%, A few: 26-50%, Many: 51-75%, Most: 76-100%
Rainfall amount (mm): Heavy rain: 64.5 – 115.5, Very heavy rain: 115.6 – 204.4, Extremely heavy rain: 204.5 or more.

North Tamilnadu	Rainfall at many places with heavy rainfall at isolated places	Rainfall at many places
South Interior Karnataka	Rainfall at many places with heavy rainfall at isolated places	Rainfall at many places
Rayalaseema	Rainfall at most places with heavy to very heavy rainfall at isolated places	Rainfall at many places
Telangana	Rainfall at most places with heavy to very heavy rainfall at isolated places	Rainfall at many places

(ii) Wind warning

- Squally wind speed reaching 45-55 kmph gusting to 65 kmph will prevail over westcentral & adjoining southwest Bay of Bengal, along & off south Andhra Pradesh & adjoining north Tamil Nadu coast during next 6 hours and improve thereafter.
- Squally wind speed reaching 50-60 kmph gusting to 70 kmph will be prevailing over Chittoor, Kadapa, Nellore districts of Andhra Pradesh and Vellore, Ranipet & Tiruvallur districts of Tamil Nadu during next 06 hours and gradually decrease thereafter.

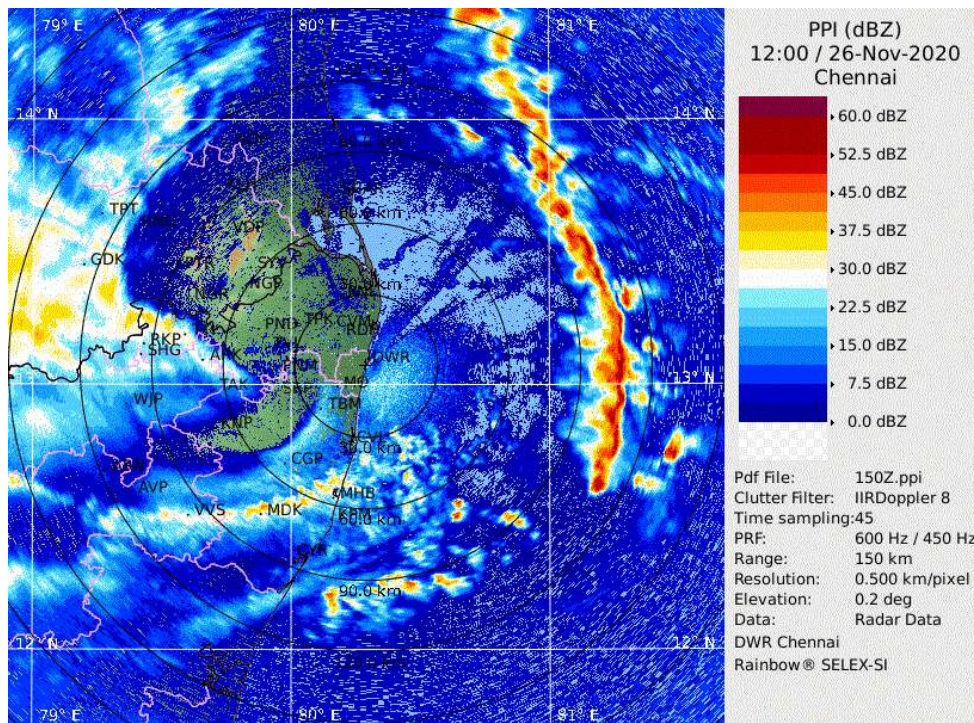
(iii) Sea condition

- Sea condition is rough to very rough over Westcentral & adjoining southwest Bay of Bengal, along & off South Andhra Pradesh and adjoining north Tamil Nadu coast during next 06 hours and improve thereafter.

The next bulletin will be issued at 0230 hrs IST of tomorrow, the 27th November, 2020.

**(Naresh Kumar)
Scientist-E, RSMC, New Delhi**

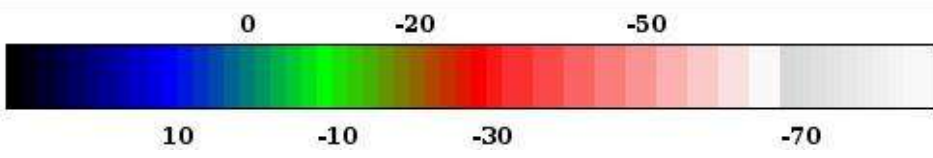
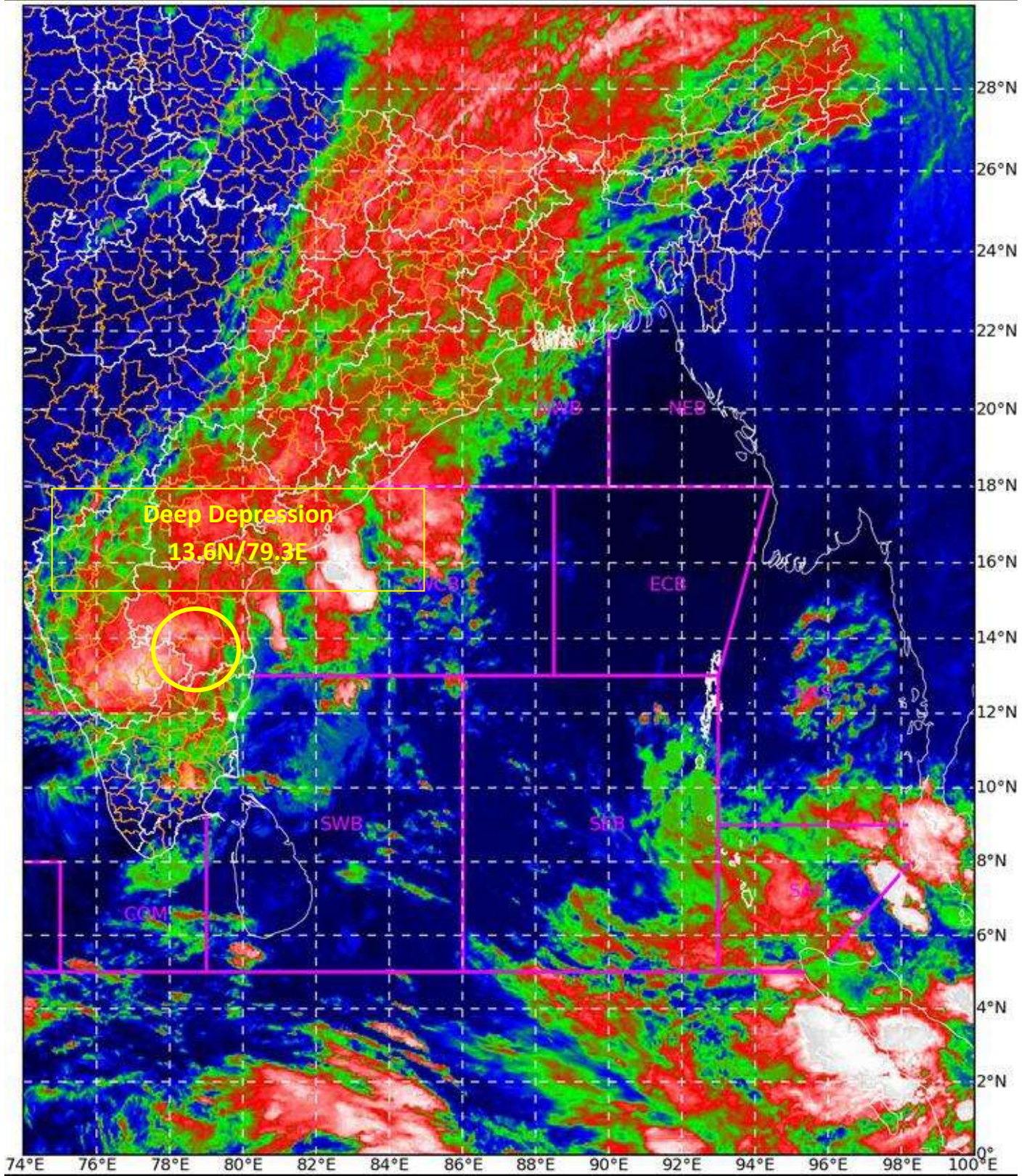
Copy to: ACWC Kolkata/Chennai/CWC Bhubaneswar/CWC Visakhapatnam/CWC Thiruvananthapuram



DWR Chennai Imagery based on 1200 UTC of 26th November, 2020

Spatial rainfall distribution: Isolated: $\leq 25\%$, A few: 26-50%, Many: 51-75%, Most: 76-100%
Rainfall amount (mm): Heavy rain: 64.5 – 115.5, Very heavy rain: 115.6 – 204.4, Extremely heavy rain: 204.5 or more.

SAT : INSAT-3DR IMG 26-11-2020/(1245 to 1312) GMT
IMG_TIR1_TEMP 10.8 um 26-11-2020/(1815 to 1842) IST
L1C Mercator

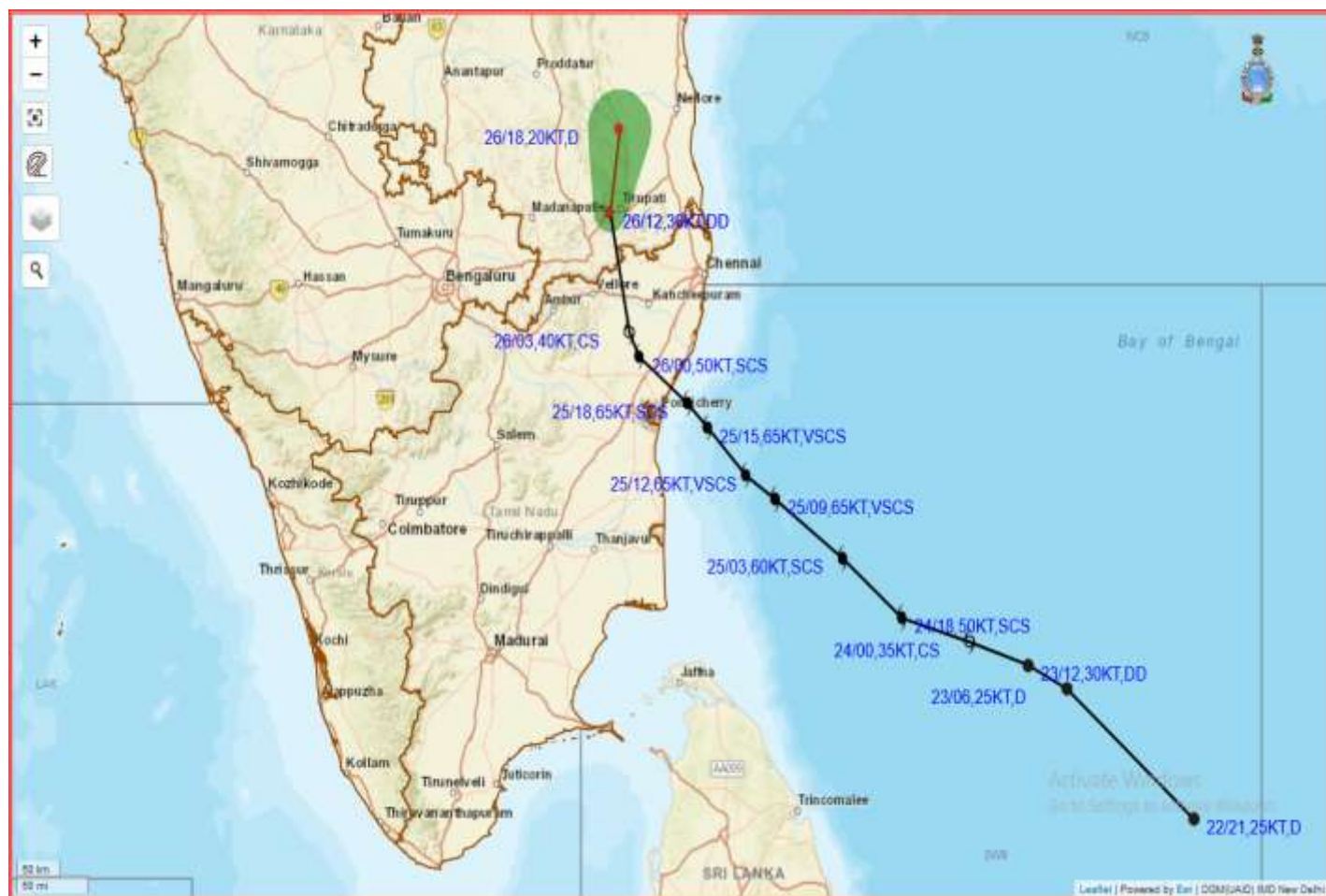


Celsius
IMD, DELHI

Spatial rainfall distribution: Isolated: ≤25%, A few: 26-50%, Many: 51-75%, Most: 76-100%
Rainfall amount (mm): Heavy rain: 64.5 – 115.5, Very heavy rain: 115.6 – 204.4, Extremely heavy rain: 204.5 or more.



OBSERVED AND FORECAST TRACK ALONGWITH CONE OF UNCERTAINTY OF CYCLONIC STORM NIVAR OVER SOUTH RAYALSEEMA BASED ON 1200UTC OF 26TH NOVEMBER, 2020.



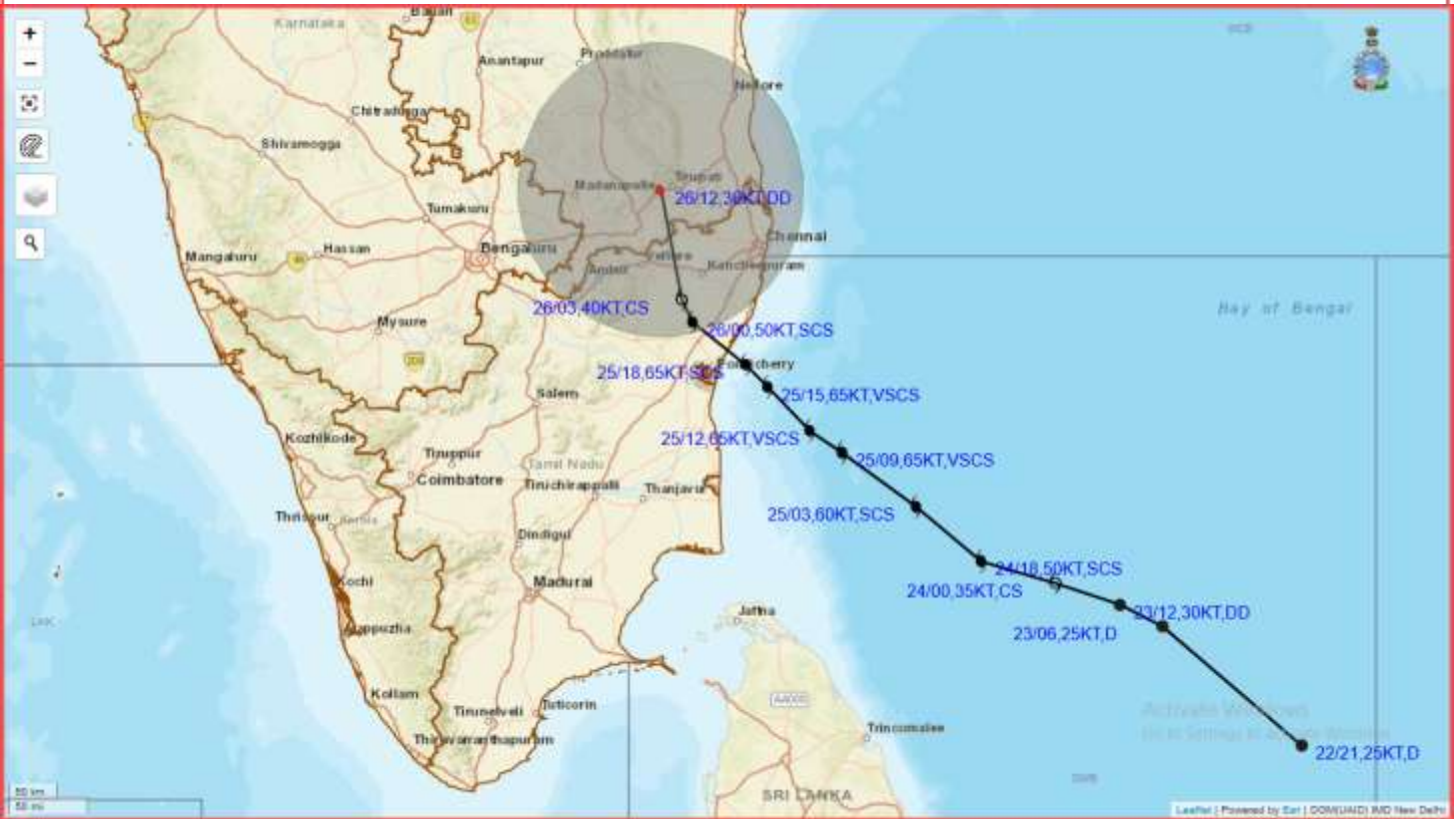
DATE/TIME IN UTC
 IST=UTC + 0530
 L: LOW PRESSURE AREA
 WML: WELL MARKED LOW PRESSURE AREA
 D: DEPRESSION (17-27 KT)
 DD: DEEP DEPRESSION (28-33 KT)
 CS: CYCLONIC STORM (34-47 KT)
 SCS: SEVERE CYCLONIC STORM (48-63KT)
 VSCS: VERY SEVERE CYCLONIC STORM (64-89 KT)
 ESCS: EXTREMELY SEVERE CYCLONIC STORM (90-119 KT)
 SuCS: SUPER CYCLONIC STORM (\geq 120 KT)

- LESS THAN 34 KT
- 34-47 KT
- \geq 48 KT
- OBSERVED TRACK
- FORECAST TRACK
- CONE OF UNCERTAINTY

Spatial rainfall distribution: Isolated: \leq 25%, A few: 26-50%, Many: 51-75%, Most: 76-100%
 Rainfall amount (mm): Heavy rain: 64.5 – 115.5, Very heavy rain: 115.6 – 204.4, Extremely heavy rain: 204.5 or more.



OBSERVED AND FORECAST TRACK ALONGWITH QUADRANT WIND DISTRIBUTION OF CYCLONIC STORM NIVAR OVER SOUTH RAYALSEEMA BASED ON 1200UTC OF 26TH NOVEMBER, 2020



DATE/TIME IN UTC

IST=UTC + 0530

L: LOW PRESSURE AREA

WML: WELL MARKED LOW PRESSURE AREA

D: DEPRESSION (17-27 KT)

DD: DEEP DEPRESSION (28-33 KT)

CS: CYCLONIC STORM (34-47 KT)

SCS: SEVERE CYCLONIC STORM (48-63KT)

VSCS: VERY SEVERE CYCLONIC STORM (64-89 KT)

ESCS: EXTREMELY SEVERE CYCLONIC STORM (90-119 KT)

SuCS: SUPER CYCLONIC STORM (≥ 120 KT)

- LESS THAN 34 KT
- 34-47 KT
- ≥ 48 KT
- OBSERVED TRACK
- FORECAST TRACK
- CONE OF UNCERTAINTY
- AREA OF MAXIMUM SUSTAINED WIND SPEED:**
- 28-33 KT (52-61 KMPH)
- 34-49 KT (62-91 KMPH)
- 50-63 KT (92-117 KMPH)
- ≥ 64 KT (≥ 118 KMPH)

IMPACT OVER THE SEA

MSW (knot/kmph)	Impact	Action
28-33 (52-61)	Very rough seas	Total suspension of fishing operations
34-49 (62-91)	High to very high seas	Total suspension of fishing operations
50-63 (92-117)	Very high seas	Total suspension of fishing operations
≥ 64 (≥ 118)	Phenomenal	Total suspension of fishing operations

Spatial rainfall distribution: Isolated: $\leq 25\%$, A few: 26-50%, Many: 51-75%, Most: 76-100%

Rainfall amount (mm): Heavy rain: 64.5 – 115.5, Very heavy rain: 115.6 – 204.4, Extremely heavy rain: 204.5 or more.