

Friday, July 26, 2024
Time of Issue: 2000 hours IST
(NIGHT)

All India Impact Based Weather Warning Bulletin

26 July (Day 1):

- ❖ **Heavy to very heavy rainfall with extremely heavy falls (≥ 20 cm)** very likely at isolated places Konkan & Goa, ghat areas of Madhya Maharashtra, Gujarat region; **Heavy to very heavy rainfall (≥ 12 cm)** likely at isolated places over Uttarakhand, East Rajasthan, Madhya Pradesh, Chhattisgarh, Jharkhand, Odisha, Saurashtra & Kutch, Coastal and South Interior Karnataka; **Heavy rainfall (≥ 7 cm)** at isolated places over Himachal Pradesh, Uttar Pradesh, West Rajasthan, East Madhya Pradesh, Vidarbha, West Bengal & Sikkim, Assam & Meghalaya, Tamil Nadu, Puducherry & Karaikal, and North Interior Karnataka.
- ❖ **Thunderstorm accompanied with lightning & gusty winds (speed reaching 30-40 kmph)** very likely at isolated places over Gujarat state; **Thunderstorm accompanied with lightning** very likely at isolated places over Jammu-Kashmir-Ladakh-Gilgit-Baltistan-Muzaffarabad, Uttarakhand, Uttar Pradesh, Rajasthan, Madhya Pradesh, West Bengal & Sikkim, Bihar, Jharkhand, Assam & Meghalaya.
- ❖ **Hot and humid weather** very likely to prevail over Assam & Meghalaya and Tripura.
- ❖ **Squally weather with wind speed reaching 35 kmph to 45 kmph gusting to 55 kmph** very likely to prevail over northeast and adjoining northwest Arabian sea, most parts of east central & many parts of west central Arabian sea, northern parts of southeast and southwest Arabian sea, along and off Karnataka, north Kerala coasts, over Lakshadweep area, gulf of Mannar, off Sri Lanka coast, over many parts of south & most parts of central Bay of Bengal & southern parts of north Bay of Bengal, north Andaman sea, along and off north Andhra Pradesh, off Odisha and West Bengal coasts. **Squally weather with wind speed reaching 45 kmph to 55 kmph gusting to 65 kmph** likely to prevail along and off Gujarat, Maharashtra, Konkan & Goa coast, over many parts of central Bay of Bengal & southern parts of northwest Bay of Bengal. **Squally weather with wind speed reaching 50 kmph to 60 kmph gusting to 70 kmph** likely to prevail along and off Maharashtra, Konkan, goa, coasts. **Squally winds with speed reaching 45 kmph to 55 kmph gusting to 65 kmph** likely to prevail over central Arabian sea & adjoining areas of southeast and southwest Arabian sea, southern parts of north Arabian sea, along & off Somalia & Oman coasts. Fishermen are advised not to venture into these areas.

27 July (Day 2):

- ❖ **Heavy to very heavy rainfall with extremely heavy falls (≥ 20 cm)** very likely at isolated places ghat areas of Madhya Maharashtra; **Heavy to very heavy rainfall (≥ 12 cm)** likely at isolated places over Uttarakhand, East Rajasthan, Madhya Pradesh, Vidarbha, Chhattisgarh, Konkan & Goa, Gujarat Region, Coastal and South Interior Karnataka; **Heavy rainfall (≥ 7 cm)** at isolated places over Haryana, East Uttar Pradesh, Himachal Pradesh, West Rajasthan, Odisha, Marathwada, Saurashtra & Kutch, Tamil Nadu, Puducherry & Karaikal, Kerala & Mahe and North Interior Karnataka.
- ❖ **Thunderstorm accompanied with lightning & gusty winds (speed reaching 30-40 kmph)** very likely at isolated places over Gujarat state; **Thunderstorm accompanied with lightning** very likely at isolated places over Jammu-Kashmir-Ladakh-Gilgit-Baltistan-Muzaffarabad, Haryana, Madhya Pradesh, Rajasthan, Uttar Pradesh, Vidarbha, Chhattisgarh and Bihar.
- ❖ **Hot and humid weather** very likely to prevail over Assam & Meghalaya and Tripura.
- ❖ **Squally weather with wind speed reaching 35 kmph to 45 kmph gusting to 55 kmph** very likely to prevail over northeast and adjoining northwest Arabian sea, most parts of central Arabian sea, northern parts of southeast and many places of southwest Arabian sea, along and off Karnataka, gulf of Mannar, off Sri Lanka coast, over many parts of southwest & parts of southeast Bay of Bengal & most parts of central Bay of Bengal and southern parts of northwest Bay of Bengal, north Andaman sea, along and off north Andhra Pradesh, off Odisha coasts. **Squally weather with wind speed reaching 45 kmph to 55 kmph gusting to 65 kmph** likely to prevail along and off Maharashtra, Konkan & Goa coast, over parts of central Bay of Bengal & southern parts of northwest Bay of Bengal. **Squally weather with wind speed reaching 50 kmph to 60 kmph gusting to 70 kmph** likely to prevail along and off Maharashtra, Konkan, goa, coasts. **Squally winds with speed reaching 45 kmph to 55 kmph gusting to 65 kmph** likely to prevail over central Arabian sea & adjoining areas of southwest Arabian sea, southern parts of north Arabian sea, along & off Somalia & Oman coasts. Fishermen are advised not to venture into these areas.

28 July (Day 3):

- ❖ **Heavy to very heavy rainfall (≥ 12 cm)** very likely at isolated places over East Rajasthan, Konkan & Goa, Gujarat State; **Heavy rainfall (≥ 7 cm)** at isolated places over Himachal Pradesh, Uttarakhand, Haryana, Uttar Pradesh, West Rajasthan, Madhya Pradesh, Vidarbha, Chhattisgarh, Sub-Himalayan West Bengal & Sikkim, Arunachal Pradesh, Assam & Meghalaya, Nagaland, Manipur, Mizoram & Tripura, Kerala & Mahe, Coastal and South Interior Karnataka.
- ❖ **Thunderstorm accompanied with lightning & gusty winds (speed reaching 40-50 kmph)** very likely at isolated places over Gujarat state; **Thunderstorm accompanied with lightning** very likely at isolated places over Jammu-Kashmir-Ladakh-Gilgit-Baltistan-Muzaffarabad, Haryana, Rajasthan, Uttar Pradesh, Vidarbha, Chhattisgarh, Assam & Meghalaya, Nagaland, Manipur.
- ❖ **Squally weather with wind speed reaching 35 kmph to 45 kmph gusting to 55 kmph** very likely to prevail over southern parts of northeast and adjoining northwest Arabian sea, most parts of east central & many parts of west central Arabian sea, northern parts of southeast and southwest Arabian sea, along and off Gujarat coast adjoining northeast Arabian sea, along and off Maharashtra, Konkan, goa, Karnataka coasts, off Sri Lanka coast, over many parts of south & most parts of central Bay of Bengal & southern parts of northwest Bay of Bengal, north Andaman sea, Odisha coasts. **Squally weather with wind speed reaching 45 kmph to 55 kmph gusting to 65 kmph** likely to prevail over gulf of Mannar, parts of west central Bay of Bengal. **Squally winds with speed reaching 45 kmph to 55 kmph gusting to 65 kmph** likely to prevail over central Arabian sea & adjoining areas of southwest Arabian sea, southern parts of north Arabian sea, along & off Somalia & Oman coasts. Fishermen are advised not to venture into these areas.

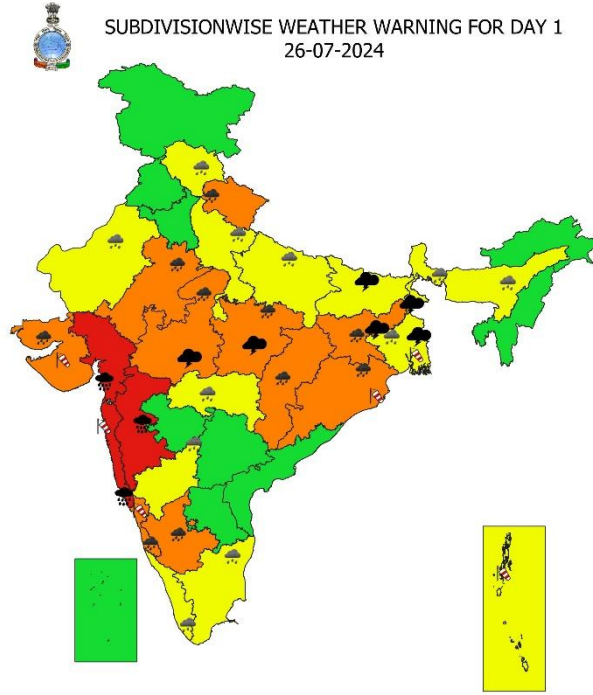
29 July (Day 4):

- ❖ **Heavy to very heavy rainfall (≥ 12 cm)** likely at isolated places over Uttarakhand and Gujarat State; **Heavy rainfall (≥ 7 cm)** at isolated places over Jammu-Kashmir-Ladakh-Gilgit-Baltistan-Muzaffarabad, Himachal Pradesh, Uttar Pradesh, East Rajasthan, West Madhya Pradesh, Odisha, Arunachal Pradesh, Assam & Meghalaya, Nagaland, Manipur, Mizoram & Tripura, Konkan & Goa, Madhya Maharashtra, Kerala & Mahe, Coastal and South Interior Karnataka.
- ❖ **Thunderstorm accompanied with lightning & gusty winds (speed reaching 40-50 kmph)** very likely at isolated places over Gujarat state; **Thunderstorm accompanied with lightning** very likely at isolated places over Jammu-Kashmir-Ladakh-Gilgit-Baltistan-Muzaffarabad, Rajasthan, Uttar Pradesh, Vidarbha, Chhattisgarh, Jharkhand, Arunachal Pradesh, Assam & Meghalaya, Nagaland, Manipur.
- ❖ **Squally weather with wind speed reaching 35 kmph to 45 kmph gusting to 55 kmph** likely to prevail over southern parts of north Arabian sea, most parts of east central & many parts of west central Arabian sea, northern parts of southeast and southwest Arabian sea, off Sri Lanka coast, over many parts of south & most parts of central Bay of Bengal & southern parts of northwest Bay of Bengal. **Squally weather with wind speed reaching 45 kmph to 55 kmph gusting to 65 kmph** likely to prevail over gulf of Mannar, parts of west central Bay of Bengal. **Squally winds with speed reaching 45 kmph to 55 kmph gusting to 65 kmph** likely to prevail over central Arabian sea & adjoining areas of southeast and southwest Arabian sea, southern parts of north Arabian sea, along & off Somalia & Oman coasts. Fishermen are advised not to venture into these areas.

30 July (Day 5):

- ❖ **Heavy to very heavy rainfall (≥ 12 cm)** likely at isolated places over Odisha; **Heavy rainfall (≥ 7 cm)** at isolated places over Himachal Pradesh, Uttarakhand, Punjab, Haryana-Chandigarh-Delhi, Uttar Pradesh, East Rajasthan, Madhya Pradesh, Jharkhand, Konkan & Goa, Madhya Maharashtra, Assam & Meghalaya, Nagaland, Gujarat state, Kerala & Mahe, Coastal & South Interior Karnataka
- ❖ **Thunderstorm accompanied with lightning very likely** at isolated places over Jammu-Kashmir-Ladakh-Gilgit-Baltistan-Muzaffarabad, Uttarakhand, Punjab, Haryana-Chandigarh-Delhi, Uttar Pradesh, Vidarbha, Chhattisgarh, Jharkhand, Arunachal Pradesh, Assam & Meghalaya, Nagaland, Manipur, Mizoram & Tripura.
- ❖ **Squally weather with wind speed reaching 35 kmph to 45 kmph gusting to 55 kmph** likely to prevail over southern parts of north Arabian sea, most parts of east central & many parts of west central Arabian sea, northern parts of southeast and southwest Arabian sea, along & off north Gujarat coasts, off Sri Lanka coast, over northern parts of south Bay of Bengal, most parts of central & southern parts of northwest Bay of Bengal. **Squally weather with wind speed reaching 45 kmph to 55 kmph gusting to 65 kmph** likely to prevail over gulf of Mannar, parts of west central Bay of Bengal. **Squally winds with speed reaching 45 kmph to 55 kmph gusting to 65 kmph** likely to prevail over central Arabian sea & adjoining areas of southeast and southwest Arabian sea, southern parts of north Arabian sea, along & off Somalia & Oman coasts. Fishermen are advised not to venture into these areas.

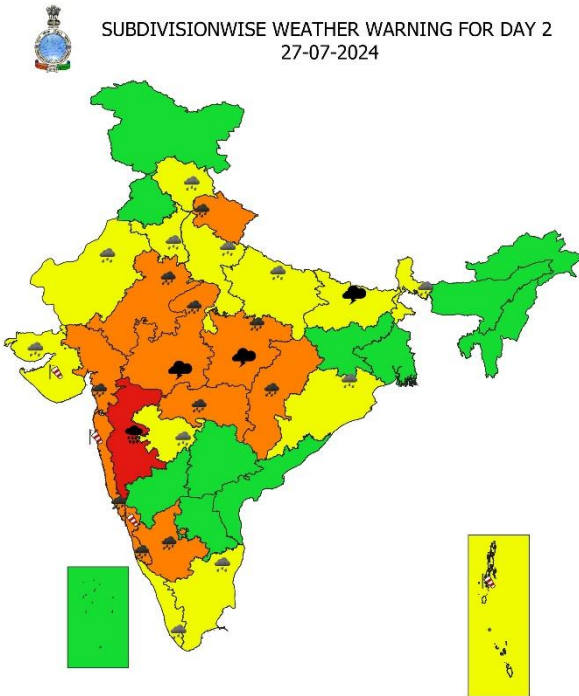
SUBDIVISIONWISE WEATHER WARNING FOR DAY 1
26-07-2024



Subdivision Warning

- | | | | |
|----------------------|------------|----------------------|---------------------------|
| Fog | Heavy Snow | Cold Day | Subdivision Colour |
| Heavy Rain | Hailstorm | Ground Frost | NO WARNING |
| Very Heavy Rain | Dust Storm | Strong Surface Winds | WATCH (BE UPDATED) |
| Extremely Heavy Rain | Heat Wave | Thunder & Lightning | ALERT (BE PREPARED) |
| | Cold Wave | Hot and Humid | WARNING (TAKE ACTION) |

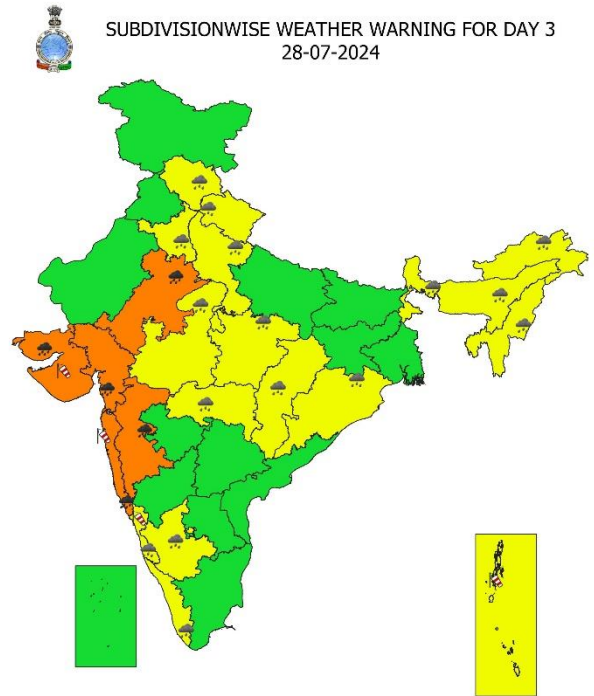
SUBDIVISIONWISE WEATHER WARNING FOR DAY 2
27-07-2024



Subdivision Warning

- | | | | |
|----------------------|------------|----------------------|---------------------------|
| Fog | Heavy Snow | Cold Day | Subdivision Colour |
| Heavy Rain | Hailstorm | Ground Frost | NO WARNING |
| Very Heavy Rain | Dust Storm | Strong Surface Winds | WATCH (BE UPDATED) |
| Extremely Heavy Rain | Heat Wave | Thunder & Lightning | ALERT (BE PREPARED) |
| | Cold Wave | Hot and Humid | WARNING (TAKE ACTION) |

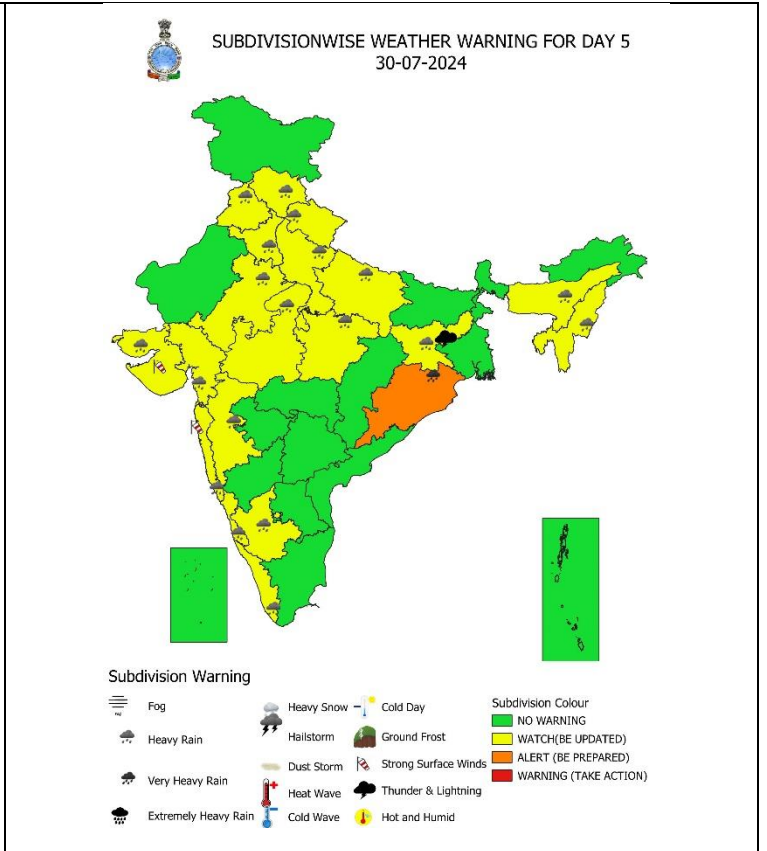
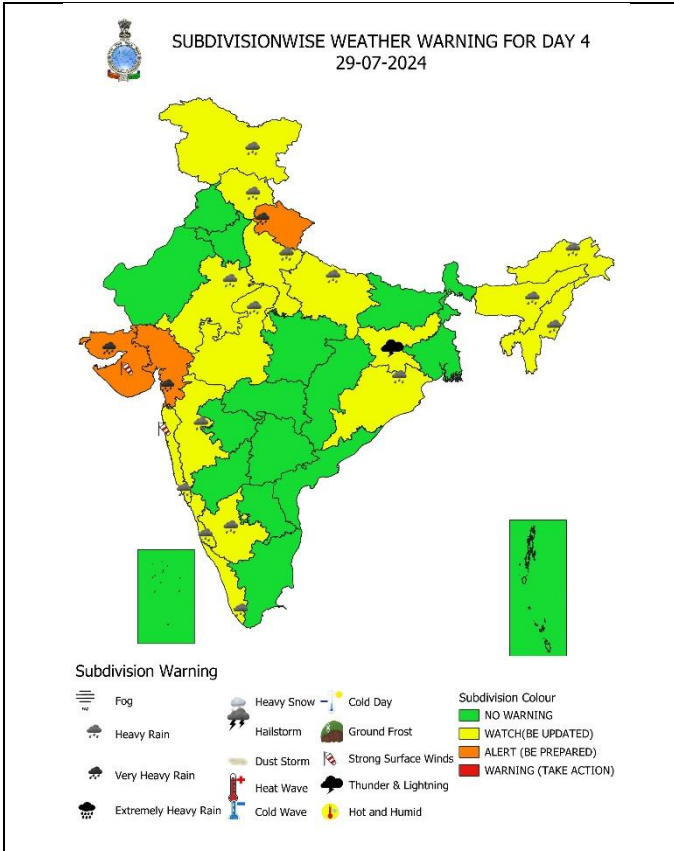
SUBDIVISIONWISE WEATHER WARNING FOR DAY 3
28-07-2024



Subdivision Warning

- | | | | |
|----------------------|------------|----------------------|---------------------------|
| Fog | Heavy Snow | Cold Day | Subdivision Colour |
| Heavy Rain | Hailstorm | Ground Frost | NO WARNING |
| Very Heavy Rain | Dust Storm | Strong Surface Winds | WATCH (BE UPDATED) |
| Extremely Heavy Rain | Heat Wave | Thunder & Lightning | ALERT (BE PREPARED) |
| | Cold Wave | Hot and Humid | WARNING (TAKE ACTION) |

*** Red colour warning does not mean "Red Alert", Red colour warning means "Take Action".**
Forecast and Warning for any day is valid from 0830 hours IST of day till 0830 hours IST of next day.
For more details, kindly visit <https://mausam.imd.gov.in> or contact: 011-2434-4599
(Service to the Nation since 1875)



IMPACT & ACTION SUGGESTED due to

- ✓ **Isolated extremely heavy rainfall very likely over Konkan & Goa, Gujarat Region on 26th; ghat areas of Madhya Maharashtra during 26th & 27th July.**
- ✓ **Very heavy rainfall very likely at isolated places over Jharkhand on 26th; Madhya Pradesh, Chhattisgarh, Coastal & South Interior Karnataka on 26th & 27th; Uttarakhand on 26th, 27th & 29th; East Rajasthan during 26th – 28th; Odisha on 26th & 30th; Vidarbha on 27th; Konkan & Goa on 27th & 28th; Madhya Maharashtra on 28th; Saurashtra & Kutch on 26th, 28th & 29th; Gujarat Region during 27th – 29th July.**

- Localized Flooding of roads, water logging in low lying areas and closure of underpasses mainly in urban areas of the above region.
- Occasional reduction in visibility due to heavy rainfall.
- Disruption of traffic in major cities due to water logging in roads leading to increased travel time.
- Minor damage to kutcha roads.
- Possibilities of damage to vulnerable structure.
- Localized Landslides/Mudslides/landslips/mud slips/land sinks/mud sinks.
- Damage to horticulture and standing crops in some areas due to inundation.
- It may lead to riverine flooding in some river catchments (for riverine flooding please visit Web page of CWC)

Action Suggested

- Check for traffic congestion on your route before leaving for your destination.
- Follow any traffic advisories that are issued in this regard.
- Avoid going to areas that face the water logging problems often.
- Avoid staying in vulnerable structure.

*** Red colour warning does not mean "Red Alert", Red colour warning means "Take Action".**
Forecast and Warning for any day is valid from 0830 hours IST of day till 0830 hours IST of next day.
For more details, kindly visit <https://mausam.imd.gov.in> or contact: 011-2434-4599
(Service to the Nation since 1875)

Agromet advisories for Heavy Rainfall likely over various parts of the country

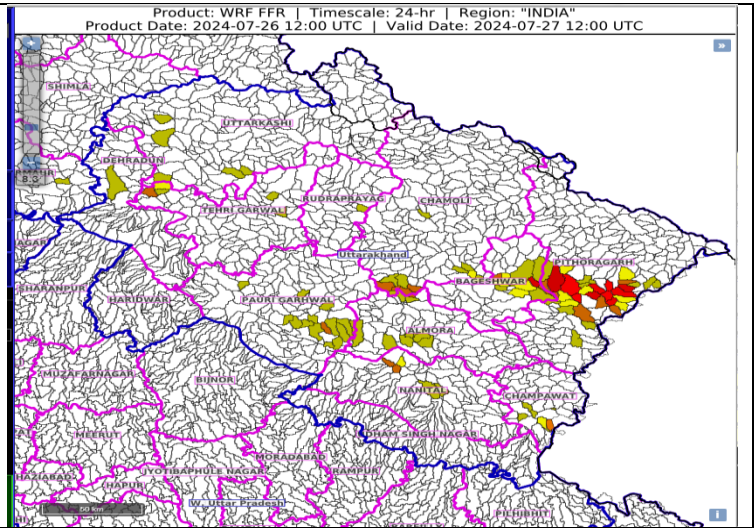
- Make provision for draining out excess water from crop fields to avoid water stagnation in Assam & Meghalaya, Sub Himalayan West Bengal, Odisha, Jharkhand, Himachal Pradesh, Uttarakhand, Uttar Pradesh, Rajasthan, Madhya Pradesh, Chhattisgarh, Vidarbha, Konkan Goa, Ghat areas of Madhya Maharashtra, Gujarat State, Tamil Nadu, Kerala and Karnataka.
- Postpone transplanting of rice in South Gujarat; rice, finger millet and vegetables in Konkan and ghat areas of Madhya Maharashtra.
- Provide mechanical support to horticultural crops & staking to vegetables.

FLASH FLOOD GUIDANCE:

24 hours Outlook for the Flash Flood Risk (FFR) till 1730 IST of 27-07-2024:

Low to Moderate flash flood risk likely over few watersheds & neighbourhoods of Uttarakhand Met Sub-divisions during next 24 hours.

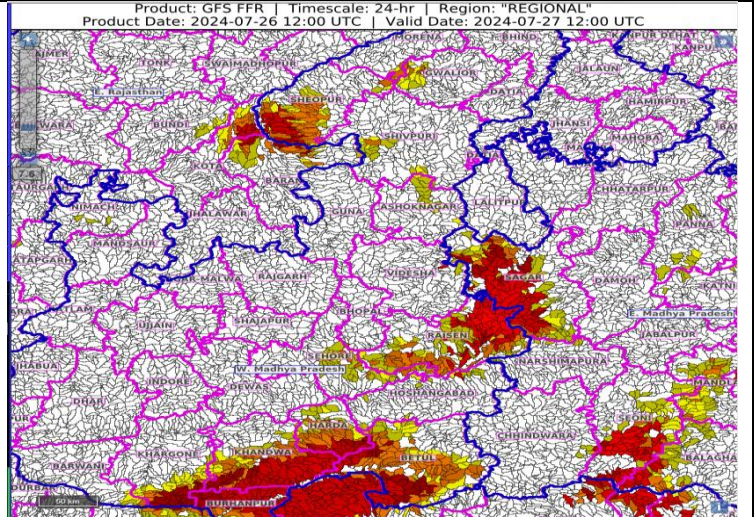
Surface runoff/ Inundation may occur at some fully saturated soils & low-lying areas over AoC as shown in map due to expected rainfall occurrence in next 24 hours.



24 hours Outlook for the Flash Flood Risk (FFR) till 1730 IST of 27-07-2024:

Low to Moderate flash flood risk likely over few watersheds & neighbourhoods of West Madhya Pradesh and adjoining East Madhya Pradesh Met Sub-divisions during next 24 hours.

Surface runoff/ Inundation may occur at some fully saturated soils & low-lying areas over AoC as shown in map due to expected rainfall occurrence in next 24 hours.



LEGENDS

WARNING

WARNING (TAKE ACTION)
ALERT (BE PREPARED)
WATCH (BE UPDATED)
NO WARNING (NO ACTION)

Probabilistic Forecast

Terms	Probability of Occurrence (%)
Unlikely	< 25
Likely	25 - 50
Very Likely	50 - 75
Most Likely	> 75



Heavy: 64.5 to 115.5 mm/cm *
Very Heavy: 115.6 to 204.4 mm/cm*
Extremely Heavy: > 204.4 mm/cm *



When maximum temperature of a station reaches $\geq 40^\circ\text{C}$ for plains and $\geq 30^\circ\text{C}$ for hilly regions
(a) Based on Departure from normal

Heat Wave: Maximum Temperature Departure from normal 4.5°C to 6.4°C .
Severe Heat Wave: Maximum Temperature Departure from normal $\geq 6.5^\circ\text{C}$

(b). Based on Actual maximum temperature

Heat Wave: When actual maximum temperature $\geq 45^\circ\text{C}$.
Severe Heat Wave: When actual maximum temperature $\geq 47^\circ\text{C}$

(c). Criteria for heat wave for coastal stations

When maximum temperature departure is $> 4.5^\circ\text{C}$ from normal. Heat Wave may be described provided maximum temperature $\geq 37^\circ\text{C}$



When maximum temperature remains 40°C

Warm Night: When minimum temperature departure 4.5°C to 6.4°C .
Severe Warm Night: When minimum temperature departure $> 6.4^\circ\text{C}$.



When minimum temperature of a station $\leq 10^\circ\text{C}$ for plains and $\leq 0^\circ\text{C}$ for hilly regions.

(a). Based on departure

Cold Wave: Minimum Temperature Departure from normal -4.5°C to -6.4°C .
Severe Cold Wave: Minimum Temperature Departure from normal $\leq -6.5^\circ\text{C}$

(b) Based on actual Minimum Temperature (for Plains only)

Cold Wave : When Minimum Temperature is $\leq 4.0^\circ\text{C}$
Severe Cold Wave: When Minimum Temperature is $\leq 2.0^\circ\text{C}$

(c) For Coastal Stations

When Minimum Temperature departure is $\leq -4.5^\circ\text{C}$ & actual Minimum Temperature is $\leq 15^\circ\text{C}$



When minimum temperature of a station $\leq 10^\circ\text{C}$ for plains and $\leq 0^\circ\text{C}$ for hilly regions
Based on departure

Cold Day: Maximum Temperature Departure from normal -4.5°C to -6.4°C .
Severe Cold Day: Maximum Temperature Departure from normal $\leq -6.5^\circ\text{C}$



Phenomenon of small droplets suspended in air and the horizontal visibility $< 1\text{km}$

Moderate Fog: When the visibility between 500-200 metres
Dense Fog: when the visibility between 50- 200 metres
Very Dense Fog: when the visibility < 50 metres



Sudden electrical discharges manifested by a flash of light (Lightning) and a sharp rumbling sound (thunder)



An ensemble of particles of dust or sand energetically lifted to great heights by a strong and turbulent wind.



Ice deposits on ground

Air temperature $\leq 4^\circ\text{C}$ (over Plains)



A strong wind that rises suddenly, lasts for atleast 1 minute.

Moderate: Wind speed 52-61 kmph
Severe: Wind speed 62-87 kmph
Very Severe: Wind speed > 87 kmph



Effect of various waves in the sea over specific area

Rough to very rough: Wind speed 41-62 kmph (22-33 knots) & Wave height 2.5-6 metre
High to very high: Wind speed 63-117 kmph (34-63 knots) & Wave height 6-14 metre
Phenomenal: Wind speed > 117 kmph (> 63 knots) & Wave height > 14 metre



Cyclonic Storm: Wind speed 62-87 kmph (34-47 knots)
Severe Cyclonic Storm: Wind speed 88-117 kmph (48-63 knots)
Very Severe Cyclonic Storm: Wind speed 118-165 kmph (64 - 89 knots)
Extremely Severe Cyclonic Storm: Wind speed 166-220 kmph (90 -119 knots)
Super Cyclone Storm: Wind speed > 220 kmph (> 119 knots)

Kindly download MAUSAM APP for location specific forecast & warning, MEGHDOOT APP for Agromet advisory and DAMINI APP for Lightning Warning & visit state MC/RMC websites for district wise warning.