

Tuesday, October 08, 2024
Time of Issue: 1945 hours IST
(NIGHT)

All India Impact Based Weather Warning Bulletin

Weather Warnings for next 7 days is given below:

(Graphics for warnings & rainfall distribution (Table 1) are given below the text:

08 October (Day 1):

- ❖ **Heavy to very Heavy rainfall (≥ 12 cm)** very likely at isolated places over Kerala & Mahe and Lakshadweep; **Heavy rainfall (≥ 7 cm)** very likely at isolated places over Arunachal Pradesh, Assam & Meghalaya, Tripura, Tamil Nadu, Puducherry & Karaikal, Coastal Andhra Pradesh & Yanam, Rayalaseema and Coastal & South Interior Karnataka.
- ❖ **Thunderstorm with lightning** very likely at isolated places over Jammu-Kashmir-Ladakh-Gilgit-Baltistan-Muzaffarabad, Punjab, West Rajasthan, East Uttar Pradesh, East Madhya Pradesh, Vidarbha, Chhattisgarh, Gangetic West Bengal, Bihar, Jharkhand, Odisha, Assam & Meghalaya, Nagaland, Manipur, Mizoram & Tripura, Konkan & Goa, Madhya Maharashtra, Marathwada, Tamil Nadu, Puducherry & Karaikal, Kerala & Mahe, Lakshadweep, Coastal Andhra Pradesh & Yanam, Telangana and Karnataka.
- ❖ **Squally weather with wind speed 35 kmph to 45 kmph gusting to 55 kmph** is likely to prevail over Maldives, Lakshadweep Comorin areas, many parts of southeast Arabian sea, along & off Kerala, Karnataka coasts, gulf of Mannar, over few parts of westcentral & adjoining few parts of southwest bay of Bengal. Fishermen are advised not to venture into these areas.

09 October (Day 2):

- ❖ **Heavy rainfall (≥ 7 cm)** very likely at isolated places over Arunachal Pradesh, Assam & Meghalaya, Nagaland, Manipur, Mizoram & Tripura, Kerala & Mahe, Tamil Nadu, Puducherry & Karaikal, Lakshadweep, Rayalaseema and Coastal Karnataka.
- ❖ **Thunderstorm with lightning** very likely at isolated places over Jammu-Kashmir-Ladakh-Gilgit-Baltistan-Muzaffarabad, Punjab, Haryana-Chandigarh-Delhi, West Rajasthan, East Madhya Pradesh, Vidarbha, Chhattisgarh, Gangetic West Bengal, Bihar, Jharkhand, Assam & Meghalaya, Nagaland, Manipur, Mizoram & Tripura, Konkan & Goa, Madhya Maharashtra, Tamil Nadu, Puducherry & Karaikal, Kerala & Mahe, Lakshadweep, Coastal Andhra Pradesh & Yanam, Telangana and Karnataka.
- ❖ **Squally weather with wind speed 35 kmph to 45 kmph gusting to 55 kmph** is likely to prevail over Maldives, Lakshadweep Comorin areas, many parts of southeast Arabian sea, along & off Kerala, Karnataka coasts, gulf of Mannar. Fishermen are advised not to venture into these areas.

10 October (Day 3):

- ❖ **Heavy rainfall ($\geq 7\text{cm}$)** very likely at isolated places over Arunachal Pradesh, Assam & Meghalaya, Kerala & Mahe and Tamil Nadu, Puducherry & Karaikal.
- ❖ **Thunderstorm with lightning** very likely at isolated places over Vidarbha, Chhattisgarh, Assam & Meghalaya, Nagaland, Manipur, Mizoram & Tripura, Konkan & Goa, Madhya Maharashtra, Marathwada, Tamil Nadu, Puducherry & Karaikal, Kerala & Mahe, Lakshadweep, Coastal Andhra Pradesh & Yanam, Telangana and Interior Karnataka.
- ❖ **Squally weather with wind speed 35 kmph to 45 kmph gusting to 55 kmph** is likely to prevail over Maldives, Lakshadweep, Comorin areas, southeast Arabian sea & adjoining southwest Arabian sea, parts of eastcentral Arabian sea, along & off Kerala, Karnataka coasts, gulf of Mannar. Fishermen are advised not to venture into these areas.

11 October (Day 4):

- ❖ **Heavy rainfall ($\geq 7\text{cm}$)** very likely at isolated places over Arunachal Pradesh, Kerala & Mahe and Tamil Nadu, Puducherry & Karaikal and South Interior Karnataka.
- ❖ **Thunderstorm with lightning** very likely at isolated places over Madhya Maharashtra, Marathwada, Tamil Nadu, Puducherry & Karaikal and Coastal Andhra Pradesh & Yanam.
- ❖ **Squally weather with wind speed 35 kmph to 45 kmph gusting to 55 kmph** is likely to prevail over Maldives, Lakshadweep, Comorin areas, southeast Arabian sea & adjoining southwest Arabian sea, parts of eastcentral Arabian sea, along & off Kerala, Karnataka coasts, gulf of Mannar. Fishermen are advised not to venture into these areas.

12 October (Day 5):

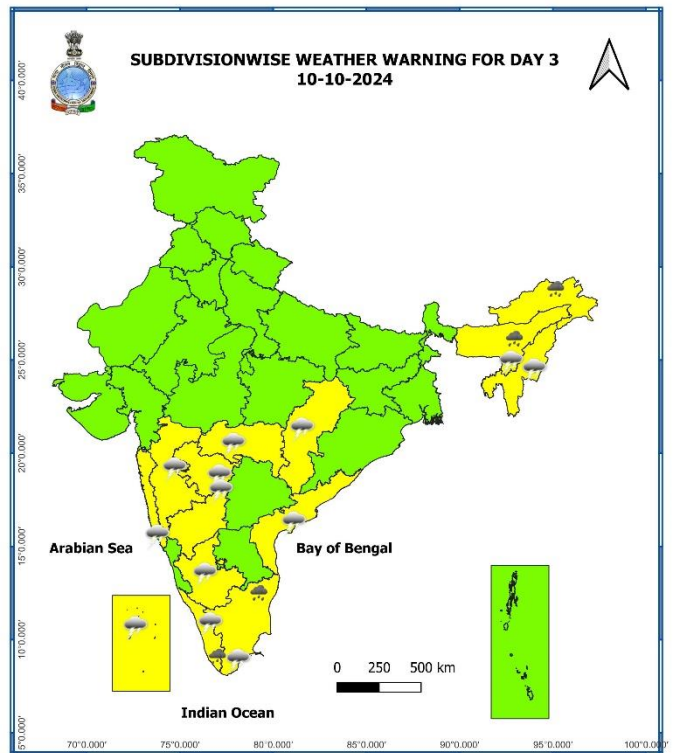
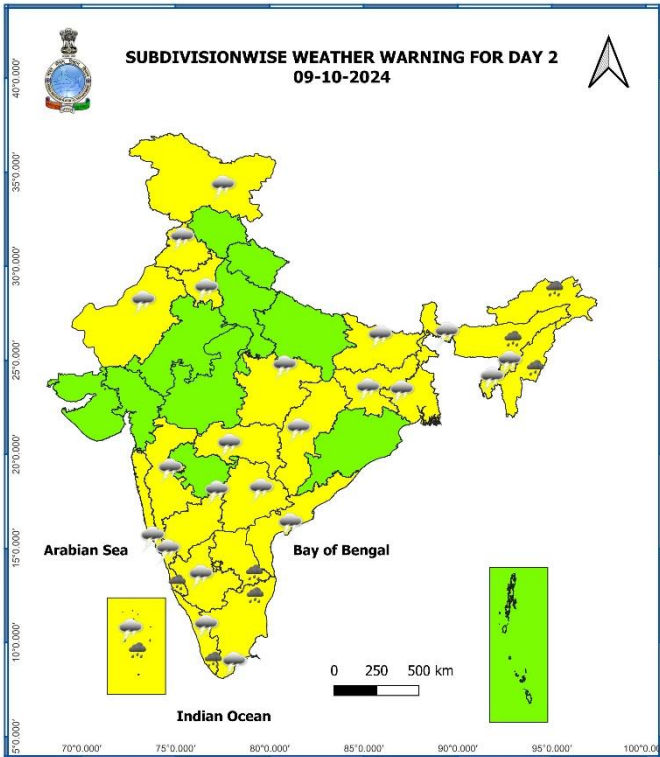
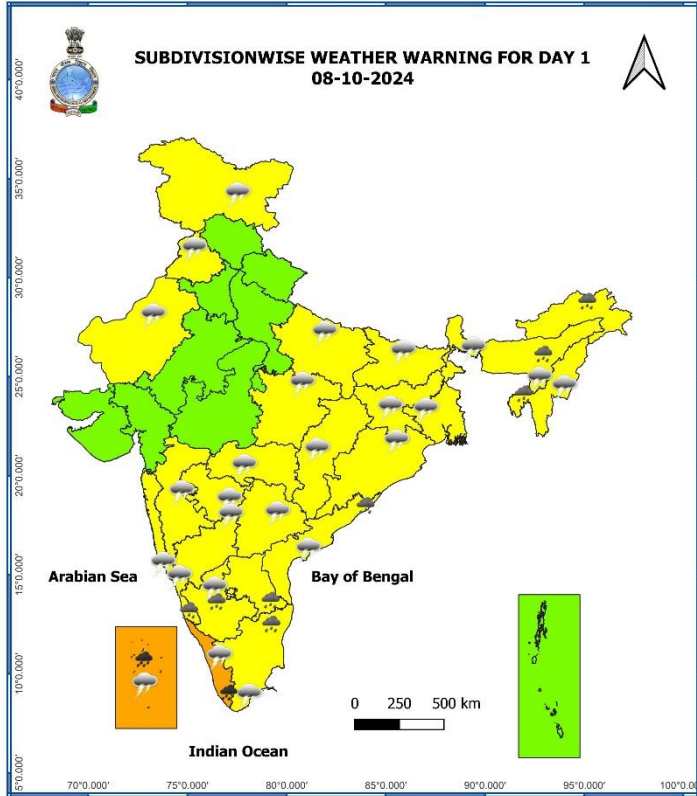
- ❖ **Heavy rainfall ($\geq 7\text{cm}$)** very likely at isolated places over Kerala & Mahe and Tamil Nadu, Puducherry & Karaikal.
- ❖ **Thunderstorm with lightning** very likely at isolated places over Madhya Maharashtra, Tamil Nadu, Puducherry & Karaikal and Coastal Andhra Pradesh & Yanam.
- ❖ **Squally weather with wind speed 35 kmph to 45 kmph gusting to 55 kmph** is likely to prevail over Maldives, Lakshadweep, Comorin areas & adjoining southeast Arabian sea, along & off Kerala, coast, gulf of Mannar. Fishermen are advised not to venture into these areas.

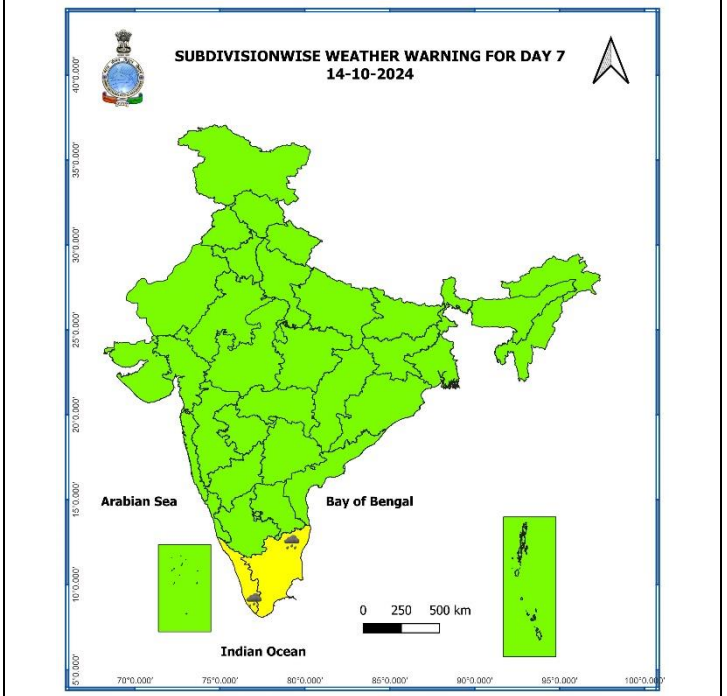
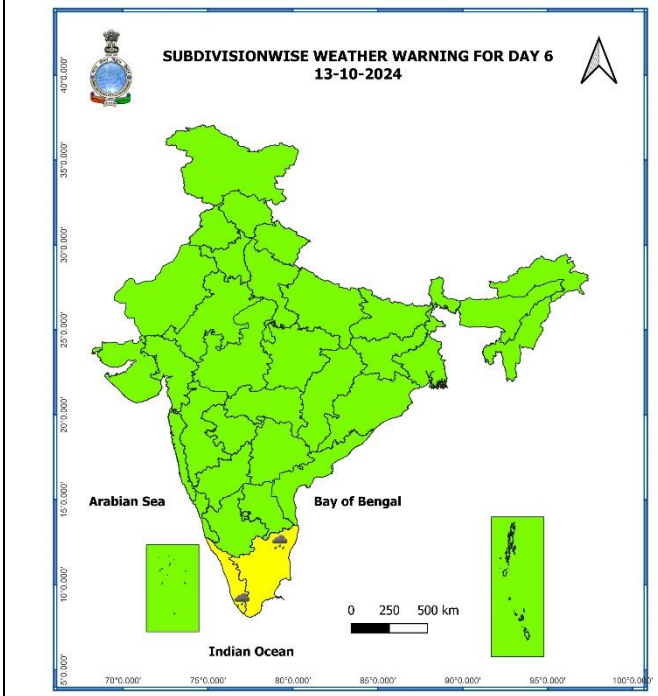
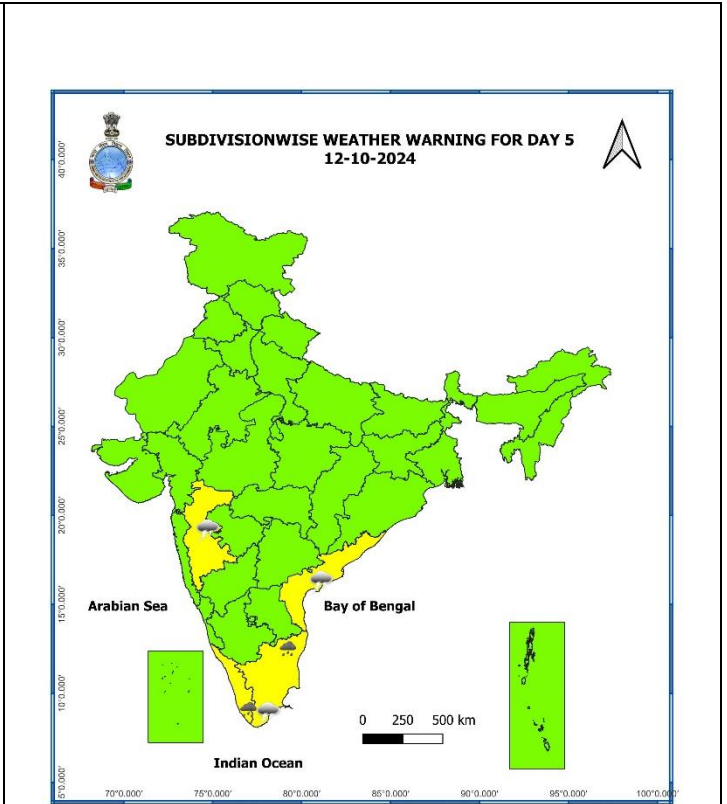
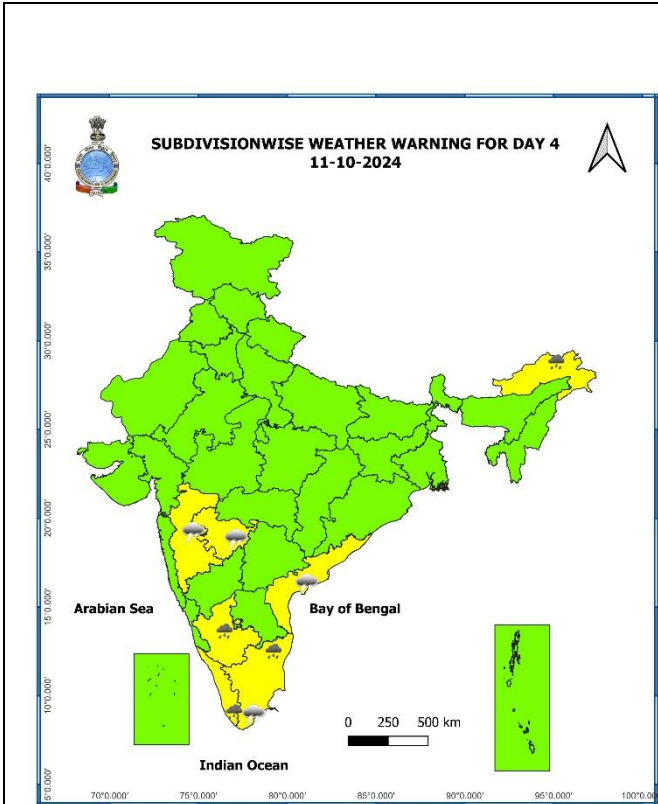
13 October (Day 6):

- ❖ **Heavy rainfall ($\geq 7\text{cm}$)** very likely at isolated places over Kerala & Mahe and Tamil Nadu, Puducherry & Karaikal.

14 October (Day 7):

- ❖ **Heavy rainfall ($\geq 7\text{cm}$)** very likely at isolated places over Kerala & Mahe and Tamil Nadu, Puducherry & Karaikal.





- Action may be taken based on **ORANGE AND RED** COLOUR warnings.
- Vulnerable regions likely urban and hilly areas action may be initiated for heavy rainfall warning.
- As the lead period increases forecast accuracy decreases.

Table-1

7 Days Rainfall Forecast								
S. No.	Subdivision	08-Oct	09-Oct	10-Oct	11-Oct	12-Oct	13-Oct	14-Oct
		Day 1	Day 2	Day 3	Day 4	Day 5	Day 6	Day 7
1	ANDAMAN & NICOBAR ISLANDS	FWS	SCT	SCT	FWS	FWS	FWS	FWS
2	ARUNACHAL PRADESH	FWS	FWS	FWS	FWS	SCT	SCT	SCT
3	ASSAM & MEGHALAYA	FWS	FWS	FWS	SCT	SCT	SCT	SCT
4	NAGALAND, MANIPUR, MIZORAM & TRIPURA	SCT	FWS	FWS	SCT	SCT	SCT	SCT
5	SUB-HIMALAYAN WEST BENGAL & SIKKIM	SCT	SCT	SCT	SCT	ISOL	ISOL	ISOL
6	GANGETIC WEST BENGAL	SCT	SCT	SCT	SCT	ISOL	ISOL	DRY
7	ODISHA	ISOL	ISOL	ISOL	ISOL	ISOL	ISOL	ISOL
8	JHARKHAND	SCT	ISOL	ISOL	ISOL	DRY	DRY	DRY
9	BIHAR	ISOL	ISOL	ISOL	DRY	DRY	DRY	DRY
10	EAST UTTAR PRADESH	ISOL	ISOL	DRY	DRY	DRY	DRY	DRY
11	WEST UTTAR PRADESH	DRY	DRY	DRY	DRY	DRY	DRY	DRY
12	UTTARAKHAND	ISOL	ISOL	DRY	DRY	DRY	DRY	DRY
13	HARYANA CHANDIGARH & DELHI	ISOL	ISOL	DRY	DRY	DRY	DRY	DRY
14	PUNJAB	ISOL	ISOL	DRY	ISOL	DRY	DRY	DRY
15	HIMACHAL PRADESH	ISOL	ISOL	DRY	DRY	DRY	DRY	DRY
16	JAMMU & KASHMIR AND LADAKH	SCT	SCT	ISOL	DRY	DRY	DRY	DRY
17	WEST RAJASTHAN	ISOL	ISOL	DRY	DRY	DRY	DRY	DRY
18	EAST RAJASTHAN	DRY	DRY	DRY	DRY	DRY	DRY	DRY
19	WEST MADHYA PRADESH	ISOL	ISOL	ISOL	ISOL	ISOL	DRY	DRY
20	EAST MADHYA PRADESH	ISOL	SCT	ISOL	ISOL	ISOL	DRY	DRY
21	GUJARAT REGION	ISOL	DRY	DRY	DRY	DRY	DRY	DRY
22	SAURASHTRA & KUTCH	DRY	DRY	DRY	DRY	DRY	DRY	DRY
23	KONKAN & GOA	SCT	SCT	ISOL	ISOL	ISOL	ISOL	SCT
24	MADHYA MAHARASHTRA	ISOL	ISOL	SCT	SCT	ISOL	ISOL	ISOL
25	MARATHAWADA	ISOL	ISOL	ISOL	ISOL	ISOL	ISOL	ISOL
26	VIDARBHA	ISOL	SCT	SCT	ISOL	ISOL	ISOL	ISOL
27	CHHATTISGARH	SCT	SCT	ISOL	ISOL	ISOL	ISOL	ISOL
28	COASTAL ANDHRA PRADESH & YANAM	SCT	SCT	SCT	ISOL	ISOL	SCT	SCT
29	TELANGANA	SCT	SCT	FWS	FWS	SCT	ISOL	ISOL
30	RAYALASEEMA	SCT	SCT	SCT	SCT	SCT	SCT	SCT
31	TAMILNADU PUDUCHERRY & KARAIKAL	SCT	SCT	FWS	FWS	WS	WS	WS
32	COASTAL KARNATAKA	FWS	FWS	FWS	FWS	FWS	SCT	SCT
33	NORTH INTERIOR KARNATAKA	SCT	SCT	SCT	SCT	ISOL	ISOL	SCT
34	SOUTH INTERIOR KARNATAKA	FWS	FWS	FWS	FWS	FWS	SCT	SCT
35	KERALA & MAHE	WS	WS	WS	WS	WS	WS	WS
36	LAKSHADWEEP	WS	WS	WS	WS	WS	WS	WS

- As the lead period increases forecast accuracy decreases.

Impact due to

❖ **Isolated heavy to very heavy rainfall** very likely over Kerala & Mahe and Lakshadweep 08th October.

Impact Expected

- ✓ Localized Flooding of roads, water logging in low lying areas and closure of underpasses mainly in urban areas of the above region.
- ✓ Occasional reduction in visibility due to heavy rainfall.
- ✓ Disruption of traffic in major cities and roadways due to water logging in roads leading to increased travel time.
- ✓ Minor damage to kutcha roads.
- ✓ Possibilities of damage to vulnerable structure.
- ✓ Localized Landslides/Mudslides/landslips/mud slips/land sinks/mud sinks.
- ✓ Damage to horticulture and standing crops in some areas due to inundation and wind.
- ✓ It may lead to riverine flooding in some river catchments (for riverine flooding please visit Web page of CWC)

Action Suggested

- ✓ Judicious regulation of surface transports including railways and roadways.
- ✓ Check for traffic congestion on your route before leaving for your destination.
- ✓ Follow any traffic advisories that are issued in this regard.
- ✓ Avoid going to areas that face the water logging problems often.
- ✓ Avoid staying in vulnerable structure

Agromet advisories for Heavy Rainfall likely over various parts of the country

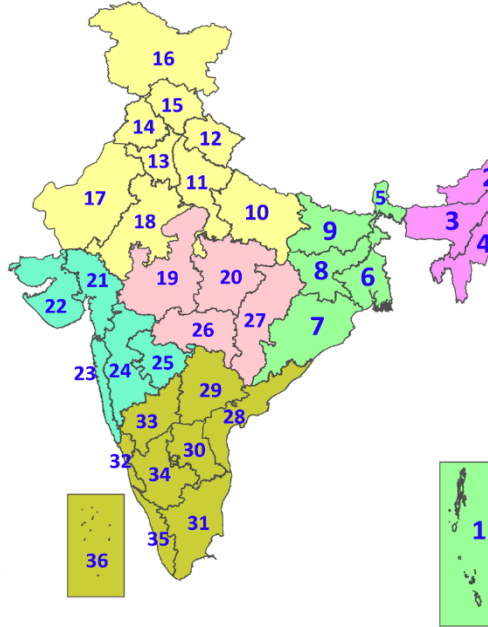
- ✓ In **Tamil Nadu**, drain out excess water from rice nurseries and recently transplanted rice fields; postpone harvesting of matured millet crops.
- ✓ In **Kerala**, postpone harvesting of *virippu* paddy; provide mechanical support to banana.
- ✓ Make necessary arrangements for draining out excess water from standing crop fields and fruit orchards to avoid water stagnation in Kerala, Coastal and South Interior Karnataka, Rayalaseema and North Eastern States.
- ✓ Keep the harvested produce at safer places.
- ✓ Provide mechanical support to horticultural crops & staking to vegetables.

Legends & abbreviations:

- ❖ **Heavy Rain:**64.5-115.5mm; **Very Heavy Rain:**115.6-204.4mm; **Extremely Heavy Rain:** >204.4mm.
- ❖ **Obsy. :** Observatory; **AWS:** Automatic Weather Station; **ARG:** Automatic Rain Gauge; **dist.:** District; **NH:** National Highway; **KVK:** Krishi Vigyan Kendra; **DVC:** Damodar Valley Corporation; **PTO:** Part Time Office, **Aero:** Aerodrome, **IAF:** Indian Air Force.
- ❖ **Region wise classification of meteorological Sub-Divisions:**
 - **Northwest India:** Western Himalayan Region (Jammu-Kashmir-Ladakh-Gilgit-Baltistan-Muzaffarabad, Himachal Pradesh and Uttarakhand); Punjab, Haryana-Chandigarh-Delhi; West Uttar Pradesh, East Uttar Pradesh, West Rajasthan and East Rajasthan.
 - **Central India:** West Madhya Pradesh, East Madhya Pradesh, Vidarbha and Chhattisgarh.
 - **East India:** Bihar, Jharkhand, Sub-Himalayan West Bengal & Sikkim; Gangetic West Bengal, Odisha and Andaman & Nicobar Islands.
 - **Northeast India:** Arunachal Pradesh, Assam & Meghalaya and Nagaland, Manipur, Mizoram & Tripura.
 - **West India:** Gujarat Region, Saurashtra & Kutch, Konkan & Goa, Madhya Maharashtra and Marathawada.
 - **South India:** Coastal Andhra Pradesh & Yanam, Telangana, Rayalaseema, Coastal Karnataka, North Interior Karnataka, South Interior Karnataka, Kerala & Mahe, Tamil Nadu, Puducherry & Karaikal and Lakshadweep.

LEGENDS















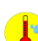


1. अंडमान और निकोबार द्वीपसमूह
2. अरुणाचल प्रदेश
3. असम और मेघालय
4. नागालैंड, मणिपुर, मिजोरम और त्रिपुरा
5. उप-हिमालयी पश्चिम बंगाल और सिक्किम
6. गंगीय पश्चिम बंगाल
7. ओडिशा
8. झारखंड
9. बिहार
10. पूर्वी उत्तर प्रदेश
11. पश्चिम उत्तर प्रदेश
12. उत्तराखंड
13. हरियाणा, चंडीगढ़ और दिल्ली
14. पंजाब
15. हिमाचल प्रदेश
16. जम्मू और कश्मीर और लद्दाख
17. पश्चिम राजस्थान
18. पूर्वी राजस्थान
19. पश्चिम मध्य प्रदेश
20. पूर्वी मध्य प्रदेश
21. गुजरात
22. सौराष्ट्र
23. कोंकण और गोवा
24. मध्य महाराष्ट्र
25. मराठवाड़ा
26. विदर्भ
27. छत्तीसगढ़
28. तटीय आंध्र प्रदेश और यनम
29. तेलंगाना
30. रायलसीमा
31. तमिलनाडु, पुडुचेरी और कराईकल
32. तटीय कर्नाटक
33. आंतरिक उत्तरी कर्नाटक
34. आंतरिक दक्षिणी कर्नाटक
35. केरल और माहे
36. लक्षद्वीप



1. Andaman & Nicobar Islands
2. Arunachal Pradesh
3. Assam & Meghalaya
4. Nagaland, Manipur, Mizoram & Tripura
5. Sub-Himalayan West Bengal & Sikkim
6. Gangetic West Bengal
7. Odisha
8. Jharkhand
9. Bihar
10. East Uttar Pradesh
11. West Uttar Pradesh
12. Uttarakhand
13. Haryana, Chandigarh & Delhi
14. Punjab
15. Himachal Pradesh
16. Jammu & Kashmir and Ladakh
17. West Rajasthan
18. East Rajasthan
19. West Madhya Pradesh
20. East Madhya Pradesh
21. Gujarat
22. Saurashtra
23. Konkan & Goa
24. Madhya Maharashtra
25. Marathwada
26. Vidarbha
27. Chhattisgarh
28. Coastal Andhra Pradesh & Yanam
29. Telangana
30. Rayalaseema
31. Tamilnadu, Puducherry & Karaikal
32. Coastal Karnataka
33. North Interior Karnataka
34. South Interior Karnataka
35. Kerala & Mahe
36. Lakshadweep

SPATIAL DISTRIBUTION (% of Stations reporting)

% Stations	Category	% Stations	Category
76-100	Widespread (WS/Most Places)	26-50	Scattered (SCT/A Few Places)
51-75	Fairly Widespread (FWS/Many Places)	1-25	Isolated (ISOL)

- | | | |
|--|--|--|
|  Fog |  Heavy Snow |  Cold Wave |
|  Heavy Rain |  Dust Storm |  Cold Day |
|  Very Heavy Rain |  Heat Wave |  Ground Frost |
|  Extremely Heavy Rain |  Warm Night | |
|  Thunder & Lightning |  Hot Day | |
|  Hailstorm |  Hot & Humid | |
|  Dust Raising Winds |  Strong Surface Winds | |

COLOUR CODED WARNING

No Warning (No Action)
Watch (Be Aware)
Alert (Be Prepared To Take Action)
Warning (Take Action)

Probabilistic Forecast

Terms	Probability of Occurrence (%)
Unlikely	< 25
Likely	25 - 50
Very Likely	50 - 75
Most Likely	> 75

* Red colour warning does not mean "Red Alert", Red colour warning means "Take Action".
 Forecast and Warning for any day is valid from 0830 hours IST of day till 0830 hours IST of next day.
 For more details, kindly visit <https://mausam.imd.gov.in> or contact: 011-2434-4599
 (Service to the Nation since 1875)

DEFINITION/CRITERIA

Rain/ Snow *	Heavy: 64.5 to 115.5 mm/cm * Very Heavy: 115.6 to 204.4 mm/cm* Extremely Heavy: > 204.4 mm/cm *
Heat Wave	<p>When maximum temperature of a station reaches $\geq 40^\circ\text{C}$ for plains and $\geq 30^\circ\text{C}$ for hilly regions</p> <p>(a) Based on Departure from normal</p> <p>Heat Wave: Maximum Temperature Departure from normal 4.5°C to 6.4°C.</p> <p>Severe Heat Wave: Maximum Temperature Departure from normal $\geq 6.5^\circ\text{C}$</p> <p>(b). Based on Actual maximum temperature</p> <p>Heat Wave: When actual maximum temperature $\geq 45^\circ\text{C}$.</p> <p>Severe Heat Wave: When actual maximum temperature $\geq 47^\circ\text{C}$</p> <p>(c). Criteria for heat wave for coastal stations When maximum temperature departure is $>4.5^\circ\text{C}$ from normal. Heat Wave may be described provided maximum temperature $\geq 37^\circ\text{C}$</p>
Warm Night	<p>When maximum temperature remains 40°C</p> <p>Warm Night: When minimum temperature departure 4.5°C to 6.4°C.</p> <p>Severe Warm Night: When minimum temperature departure $>6.4^\circ\text{C}$.</p>
Cold Wave	<p>When minimum temperature of a station $\leq 10^\circ\text{C}$ for plains and $\leq 0^\circ\text{C}$ for hilly regions.</p> <p>(a). Based on departure</p> <p>Cold Wave: Minimum Temperature Departure from normal -4.5°C to -6.4°C.</p> <p>Severe Cold Wave: Minimum Temperature Departure from normal $\leq -6.5^\circ\text{C}$</p> <p>(b) Based on actual Minimum Temperature (for Plains only)</p> <p>Cold Wave : When Minimum Temperature is $\leq 4.0^\circ\text{C}$</p> <p>Severe Cold Wave: When Minimum Temperature is $\leq 2.0^\circ\text{C}$</p> <p>(c) For Coastal Stations When Minimum Temperature departure is $\leq -4.5^\circ\text{C}$ & actual Minimum Temperature is $\leq 15^\circ\text{C}$</p>
Cold Day	<p>When minimum temperature of a station $\leq 10^\circ\text{C}$ for plains and $\leq 0^\circ\text{C}$ for hilly regions</p> <p>Based on departure</p> <p>Cold Day: Maximum Temperature Departure from normal -4.5°C to -6.4°C.</p> <p>Severe Cold Day: Maximum Temperature Departure from normal $\leq -6.5^\circ\text{C}$</p>
Fog	<p>Phenomenon of small droplets suspended in air and the horizontal visibility $< 1\text{km}$</p> <p>Moderate Fog: When the visibility between 500-200 metres</p> <p>Dense Fog: when the visibility between 50- 200 metres</p> <p>Very Dense Fog: when the visibility < 50 metres</p>
Thunderstorm	<p>Sudden electrical discharges manifested by a flash of light (Lightning) and a sharp rumbling sound (thunder)</p>
Dust/Sand Storm	<p>An ensemble of particles of dust or sand energetically lifted to great heights by a strong and turbulent wind.</p>
Frost	<p>Ice deposits on ground</p> <p>Air temperature $\leq 4^\circ\text{C}$ (over Plains)</p>
Squall	<p>A strong wind that rises suddenly, lasts for atleast 1 minute.</p> <p>Moderate: Wind speed 52-61 kmph</p> <p>Severe: Wind speed 62-87 kmph</p> <p>Very Severe: Wind speed >87 kmph</p>
Sea State	<p>Effect of various waves in the sea over specific area</p> <p>Rough to very rough: Wind speed 41-62 kmph (22-33 knots) & Wave height 2.5-6 metre</p> <p>High to very high: Wind speed 63-117 kmph (34-63 knots) & Wave height 6-14 metre</p> <p>Phenomenal: Wind speed >117 kmph (>63 knots) & Wave height >14 metre</p>
Cyclone	<p>Cyclonic Storm: Wind speed 62-87 kmph (34-47 knots)</p> <p>Severe Cyclonic Storm: Wind speed 88-117 kmph (48-63 knots)</p> <p>Very Severe Cyclonic Storm: Wind speed 118-165 kmph (64 - 89 knots)</p> <p>Extremely Severe Cyclonic Storm: Wind speed 166-220 kmph (90 -119 knots)</p> <p>Super Cyclone Strom: Wind speed >220 kmph (>119 knots)</p>