

Tuesday, October 22, 2024
Time of Issue: 1945 hours IST
(NIGHT)

All India Impact Based Weather Warning Bulletin

Weather Warnings for next 7 days is given below:

(Graphics for warnings & rainfall distribution (Table 1) are given below the text:

22 October (Day 1):

- ❖ **Heavy to very heavy rainfall with extremely heavy falls (≥ 20 cm)** very likely at isolated places over South Interior Karnataka; **Heavy rainfall (≥ 7 cm)** very likely at isolated places over Andaman & Nicobar Islands, Konkan & Goa, Madhya Maharashtra, Tamil Nadu, Puducherry & Karaikal, Kerala & Mahe, Rayalaseema, Coastal & North Interior Karnataka.
- ❖ **Thunderstorm accompanied with lightning** very likely at isolated places over Assam & Meghalaya, Nagaland, Manipur, Mizoram & Tripura, Konkan & Goa, Madhya Maharashtra, Marathwada, Gujarat state, Tamil Nadu, Puducherry & Karaikal, Kerala & Mahe, Coastal Andhra Pradesh & Yanam, Rayalaseema, Telangana, Karnataka, East Rajasthan, West Madhya Pradesh, Vidarbha.
- ❖ **Squally weather with wind speed 35 kmph to 45 kmph gusting to 55 kmph** very likely to prevail over eastcentral Bay of Bengal and adjoining areas and Andaman Sea. **Squally weather with wind speed 45 kmph to 55 kmph gusting to 65 kmph** is likely to prevail over Eastcentral and adjoining Areas. **Strong winds with speed 50 kmph to 60 kmph gusting to 70 kmph** is likely to prevail over Eastcentral & adjoining areas of Bay of B Bengal. **Gale winds with speed 60 kmph to 90 kmph gusting to 100 kmph** is likely to prevail over many parts of Eastcentral adjoining westcentral Bay of Bengal. Fishermen are advised not to venture into these areas.

23 October (Day 2):

- ❖ **Heavy rainfall (≥ 7 cm)** very likely at isolated places over Gangetic West Bengal, Odisha, Arunachal Pradesh, Assam & Meghalaya, Nagaland, Manipur, Mizoram & Tripura, Tamil Nadu, Puducherry & Karaikal, Kerala & Mahe, Karnataka.
- ❖ **Thunderstorm accompanied gusty winds (speed reaching 30-40 kmph)** very likely at isolated places over Gangetic West Bengal, Odisha, Kerala & Mahe; **with lightning** likely at isolated places over Jharkhand, Arunachal Pradesh, Assam & Meghalaya, Nagaland, Manipur, Mizoram & Tripura, Konkan & Goa, Madhya Maharashtra, Tamil Nadu, Puducherry & Karaikal, Coastal Andhra Pradesh & Yanam, Rayalaseema, Karnataka.
- ❖ **Squally weather with wind speed 35 kmph to 45 kmph gusting to 55 kmph** very likely to prevail over Central and North Bay of Bengal along and off North Andhra Pradesh, Odisha & west Bengal coasts. **Squally weather with wind speed 45 kmph to 55 kmph gusting to 65 kmph** is likely to prevail over parts of central & north Bay of Bengal. **Strong winds with speed 50 kmph to 60 kmph gusting to 70 kmph** is likely to prevail over many parts of central adjoining north Bay of Bengal. **Gale winds with speed 60 kmph to 90 kmph gusting to 100 kmph** is likely to prevail over many parts of eastcentral & adjoining westcentral Bay of Bengal. Fishermen are advised not to venture into these areas

24 October (Day 3):

- ❖ **Heavy to very heavy rainfall with extremely heavy falls (≥ 20 cm)** very likely at isolated places over Odisha and Gangetic West Bengal; **Heavy rainfall (≥ 7 cm)** likely at isolated places over Jharkhand, Assam & Meghalaya, Nagaland, Manipur, Mizoram & Tripura.
- ❖ **Thunderstorm accompanied gusty winds (speed reaching 30-40 kmph)** very likely at isolated places Bihar and Jharkhand; **with lightning** likely at isolated places over Chhattisgarh, Assam & Meghalaya, Nagaland, Manipur, Mizoram & Tripura, Konkan & Goa, Tamil Nadu, Puducherry & Karaikal, Kerala & Mahe, Coastal Andhra Pradesh & Yanam, Rayalaseema, Sub-Himalayan West Bengal & Sikkim.
- ❖ **Squally weather with wind speed 35 kmph to 45 kmph gusting to 55 kmph** very likely to prevail over many parts of central and North Bay of Bengal. **Squally weather with wind speed 45 kmph to 55 kmph gusting to 65 kmph** is likely to prevail over many parts of Westcentral & North Bay of Bengal and adjoining parts of Eastcentral, along and off Bangladesh coasts. **Strong winds with speed 50 kmph to 60 kmph gusting to 70 kmph** is likely to prevail over many parts of Westcentral and adjoining Eastcentral and North Bay of Bengal. **Gale winds with speed 60 kmph to 90 kmph gusting to 110 kmph** is likely to prevail over many parts of Westcentral & Northwest Bay of Bengal along and off Odisha, West Bengal coasts. **Gale winds with speed 90 kmph to 110 kmph gusting to 120 kmph** is likely to prevail over many parts of Westcentral & Northwest Bay of Bengal along and off Odisha, West Bengal coasts. Fishermen are advised not to venture into these areas.

25 October (Day 4):

- ❖ **Heavy to very heavy rainfall with extremely heavy falls (≥ 20 cm)** likely at isolated places over Odisha, Gangetic West Bengal; **Heavy to very heavy rainfall (≥ 12 cm)** likely at isolated places over Jharkhand; **Heavy rainfall (≥ 7 cm)** likely at isolated places over Nagaland, Manipur, Mizoram & Tripura, Coastal Andhra Pradesh & Yanam.
- ❖ **Thunderstorm accompanied gusty winds (speed reaching 30-40 kmph)** likely at isolated places Jharkhand **with lightning** likely at isolated places over Chhattisgarh, Sub-Himalayan West Bengal & Sikkim, Nagaland, Manipur, Mizoram & Tripura, Kerala & Mahe, Coastal Andhra Pradesh & Yanam, Rayalaseema.
- ❖ **Squally weather with wind speed 35 kmph to 45 kmph gusting to 55 kmph** likely to prevail over many parts of central, Northeast Bay of Bengal, along and off North Andhra Pradesh. **Squally weather with wind speed 45 kmph to 55 kmph gusting to 65 kmph** is likely to prevail over many parts of central and Northeast Bay of Bengal along and off few parts of North Andhra Pradesh. **Strong winds with speed 50 kmph to 60 kmph gusting to 70 kmph** is likely to prevail over many parts of Westcentral and adjoining Eastcentral and Northeast Bay of Bengal. and Bangladesh coasts **Gale winds with speed 60 kmph to 90 kmph gusting to 110 kmph** is likely to prevail over many parts of Northwest Bay of Bengal and adjoining parts of Westcentral Bay of Bengal, along and off Odisha, West Bengal coasts. **Gale winds with speed 90 kmph to 110 kmph gusting to 120 kmph** is likely to prevail over Northwest along and off Odisha, West Bengal coasts. Fishermen are advised not to venture into these areas.

26 October (Day 5):

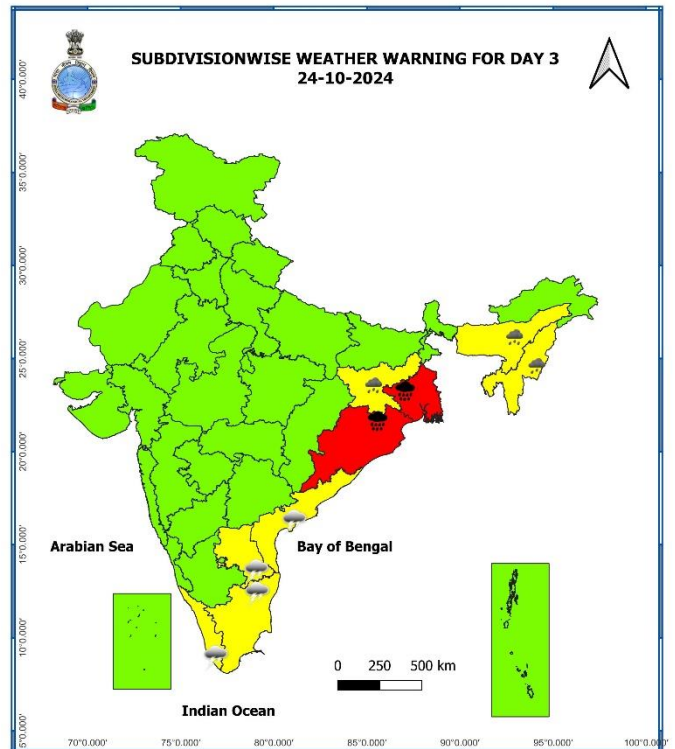
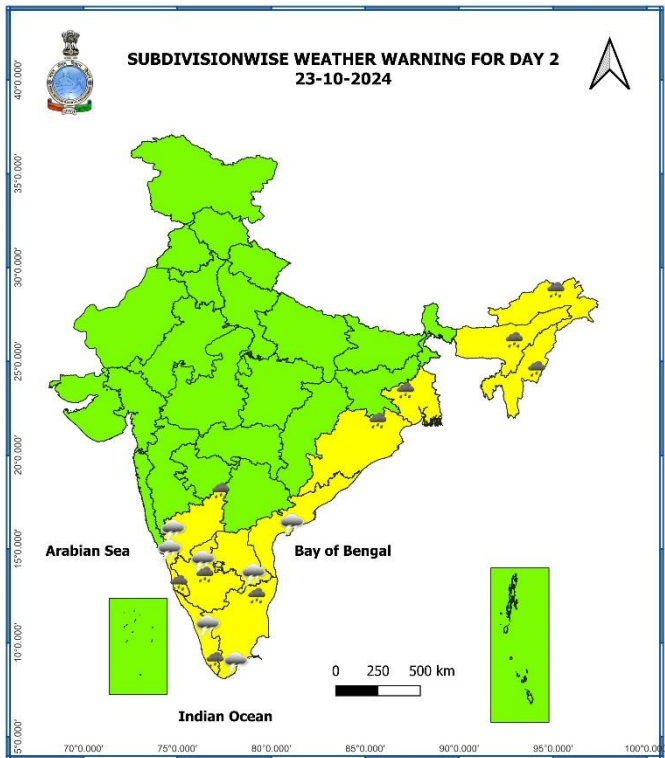
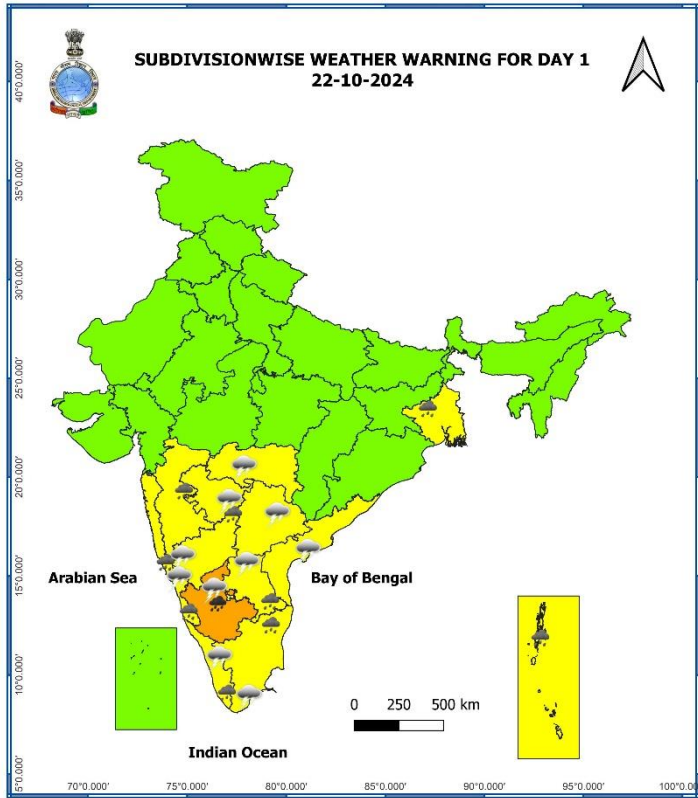
- ❖ **Heavy rainfall (≥ 12 cm)** likely at isolated places over Odisha and Gangetic West Bengal.
- ❖ **Thunderstorm accompanied with lightning** likely at isolated places over Rayalaseema, Coastal Andhra Pradesh & Yanam, Chhattisgarh.
- ❖ **Squally weather with wind speed 35 kmph to 45 kmph gusting to 55 kmph** likely to prevail over along and off few parts North Andhra Pradesh, Odisha, West Bengal. Fishermen are advised not to venture into these areas.

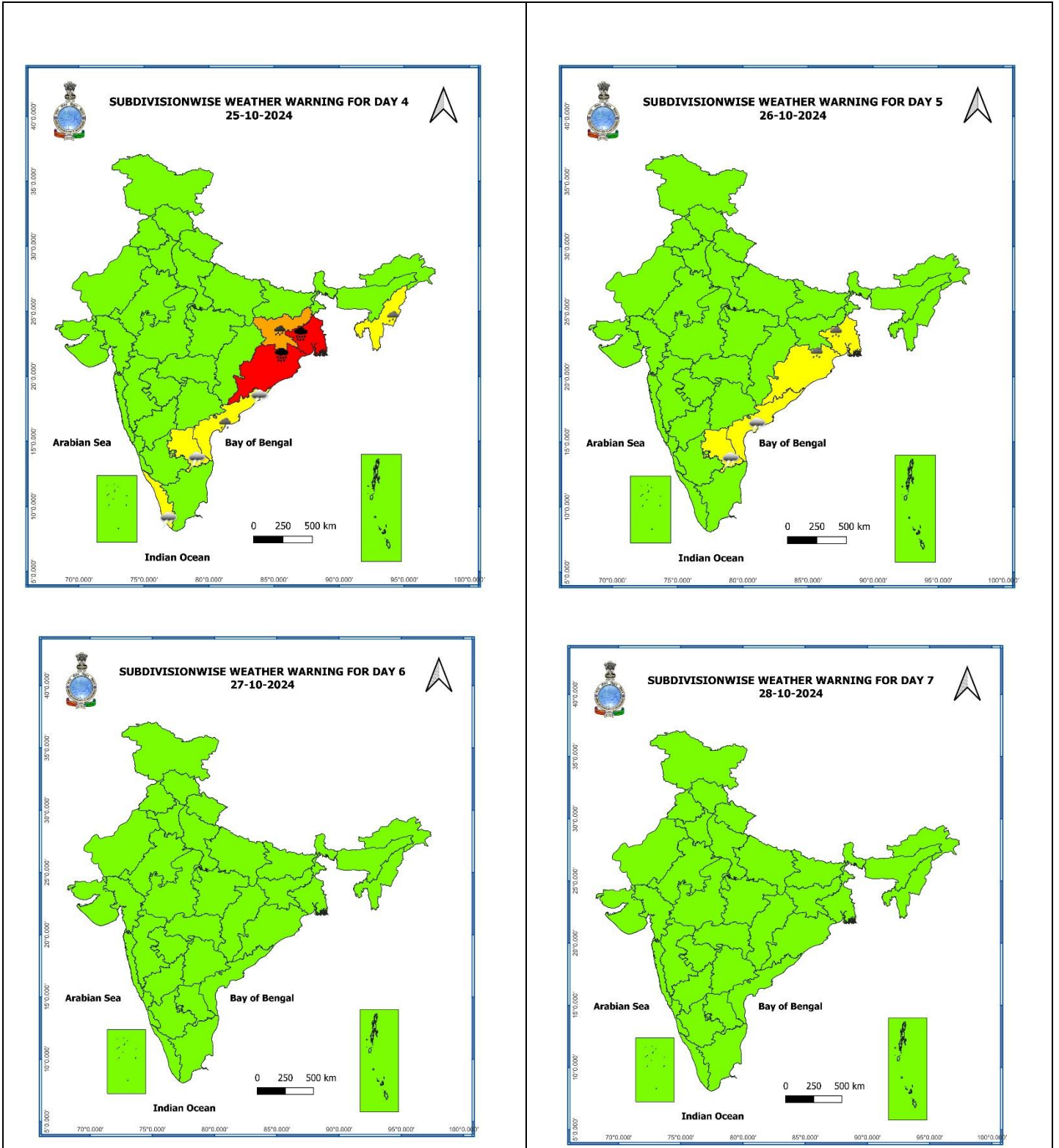
27 October (Day 6):

- ❖ **No weather warning.**

28 October (Day 7):

- ❖ **No weather warning.**





- Action may be taken based on **ORANGE AND RED** COLOUR warnings.
- Vulnerable regions likely urban and hilly areas action may be initiated for heavy rainfall warning.
- As the lead period increases forecast accuracy decreases.

Table-1

7 Days Rainfall Forecast								
S. No.	Subdivision	22-Oct	23-Oct	24-Oct	25-Oct	26-Oct	27-Oct	28-Oct
		Day 1	Day 2	Day 3	Day 4	Day 5	Day 6	Day 7
1	ANDAMAN & NICOBAR ISLANDS	WS	WS	WS	FWS	FWS	FWS	SCT
2	ARUNACHAL PRADESH	ISOL	SCT	SCT	SCT	ISOL	ISOL	ISOL
3	ASSAM & MEGHALAYA	SCT	FWS	FWS	FWS	ISOL	ISOL	ISOL
4	NAGALAND, MANIPUR, MIZORAM & TRIPURA	FWS	WS	FWS	SCT	ISOL	ISOL	ISOL
5	SUB-HIMALAYAN WEST BENGAL & SIKKIM	ISOL	ISOL	SCT	SCT	SCT	SCT	SCT
6	GANGETIC WEST BENGAL	ISOL	FWS	WS	WS	FWS	ISOL	ISOL
7	ODISHA	ISOL	SCT	FWS	WS	SCT	ISOL	ISOL
8	JHARKHAND	DRY	ISOL	FWS	WS	FWS	ISOL	DRY
9	BIHAR	DRY	ISOL	SCT	SCT	ISOL	ISOL	ISOL
10	EAST UTTAR PRADESH	DRY	DRY	ISOL	DRY	DRY	DRY	DRY
11	WEST UTTAR PRADESH	DRY	DRY	DRY	DRY	DRY	DRY	DRY
12	UTTARAKHAND	ISOL	DRY	DRY	DRY	DRY	DRY	DRY
13	HARYANA CHANDIGARH & DELHI	DRY	DRY	DRY	DRY	DRY	DRY	DRY
14	PUNJAB	DRY	DRY	DRY	DRY	DRY	DRY	DRY
15	HIMACHAL PRADESH	ISOL	DRY	DRY	DRY	DRY	DRY	DRY
16	JAMMU & KASHMIR AND LADAKH	DRY	ISOL	ISOL	DRY	DRY	DRY	ISOL
17	WEST RAJASTHAN	ISOL	DRY	DRY	DRY	DRY	DRY	DRY
18	EAST RAJASTHAN	ISOL	DRY	DRY	DRY	DRY	DRY	DRY
19	WEST MADHYA PRADESH	ISOL	DRY	DRY	DRY	DRY	DRY	DRY
20	EAST MADHYA PRADESH	DRY	DRY	DRY	DRY	DRY	DRY	DRY
21	GUJARAT REGION	ISOL	DRY	DRY	DRY	DRY	DRY	DRY
22	SAURASHTRA & KUTCH	ISOL	DRY	DRY	DRY	DRY	DRY	DRY
23	KONKAN & GOA	SCT	ISOL	ISOL	DRY	DRY	DRY	DRY
24	MADHYA MAHARASHTRA	ISOL	ISOL	ISOL	DRY	DRY	DRY	DRY
25	MARATHAWADA	ISOL	ISOL	DRY	DRY	DRY	DRY	ISOL
26	VIDARBHA	ISOL	DRY	DRY	DRY	ISOL	ISOL	ISOL
27	CHHATTISGARH	DRY	DRY	ISOL	ISOL	ISOL	ISOL	ISOL
28	COASTAL ANDHRA PRADESH & YANAM	SCT	SCT	ISOL	SCT	SCT	SCT	SCT
29	TELANGANA	SCT	ISOL	DRY	DRY	ISOL	ISOL	ISOL
30	RAYALASEEMA	SCT	SCT	ISOL	ISOL	ISOL	ISOL	ISOL
31	TAMILNADU PUDUCHERRY & KARAIKAL	SCT	SCT	SCT	ISOL	ISOL	ISOL	ISOL
32	COASTAL KARNATAKA	FWS	FWS	SCT	ISOL	DRY	DRY	ISOL
33	NORTH INTERIOR KARNATAKA	SCT	SCT	ISOL	DRY	DRY	DRY	ISOL
34	SOUTH INTERIOR KARNATAKA	WS	WS	FWS	SCT	ISOL	ISOL	ISOL
35	KERALA & MAHE	FWS	FWS	FWS	FWS	SCT	SCT	SCT
36	LAKSHADWEEP	FWS	FWS	FWS	FWS	SCT	SCT	SCT

• As the lead period increases forecast accuracy decreases.

Impact due to

- ✓ **Isolated extremely heavy rainfall** very likely over Odisha, Gangetic West Bengal on 24th & 25th October.
- ✓ **Isolated heavy to very heavy rainfall** very likely over South Interior Karnataka on 22nd; Jharkhand on 25th October.

Impact Expected

- ✓ Major damage to thatched houses/ huts. Roof tops may blow off. Unattached metal sheets may fly.
- ✓ Minor damage to power and communication lines.
- ✓ Major damage to Kutcha and some damage to Pucca roads. Flooding of escape routes.
- ✓ Possibilities of damage to vulnerable structure. Breaking of tree branches and uprooting of trees.
- ✓ Moderate damage to banana and papaya trees. Large dead limbs blown from trees.
- ✓ Damage to horticulture and standing crops in some areas due to inundation and wind.
- ✓ Damage to embankments/ salt pans.
- ✓ Localized Flooding of roads, water logging in low lying areas and closure of underpasses mainly in urban areas of the above region.
- ✓ Occasional reduction in visibility due to heavy rainfall.
- ✓ Disruption of traffic in major cities and roadways due to water logging in roads and poor visibility due to heavy rain leading to increased travel time and incidents
- ✓ Localized Landslides/Mudslides/landslips/mud slips/land sinks/mud sinks.
- ✓ Likely disruption of marine and inland water transportation like small boats and trawlers.
- ✓ It may lead to riverine flooding in some river catchments (for riverine flooding please visit Webpage of Central Water Commission)

Action Suggested

- ✓ Judicious regulation of surface transports including railways and roadways.
- ✓ Check for traffic congestion on your route before leaving for your destination.
- ✓ Follow any traffic advisories that are issued in this regard.
- ✓ Avoid going to areas that face the water logging problems often.
- ✓ Avoid staying in vulnerable structure

Agromet advisories for Heavy Rainfall likely over various parts of the country

- ✓ In **Tamil Nadu**, drain out excess water from rice nurseries and fields of rice, maize, pepper and newly planted turmeric. Undertake detrashing and propping of more than five-month-old sugarcane to avoid lodging. Provide support to banana plantations.
- ✓ Make necessary arrangements to drain out excess water from standing crop fields and fruit orchards to avoid water stagnation in Andaman and Nicobar Islands, Kerala, Karnataka and Rayalaseema.
- ✓ Keep the harvested produce at safer places.
- ✓ Provide mechanical support to horticultural crops & staking to vegetables.
- ✓ In **Odisha**, undertake harvesting of rice crop if 85% of grains are matured in a panicle. Immediately harvest matured maize, black gram, green gram, groundnut, vegetables and fruits. Withhold sowing of pre-rabi pulses and winter vegetables. Provide propping in sugarcane by tying leaves from four to five plants together to prevent their lodging.
- ✓ In **Gangetic West Bengal**, drain out excess water from *Aman* rice, groundnut, pulses and vegetables. Complete harvesting of *kharif* rice, vegetables, and fruits as soon as possible.
- ✓ Shift the harvested produce to safer places at the earliest.
- ✓ Make arrangements for adequate drainage to avoid water logging in crop fields.
- ✓ Provide mechanical support to young fruit plants and staking in vegetables to prevent their lodging

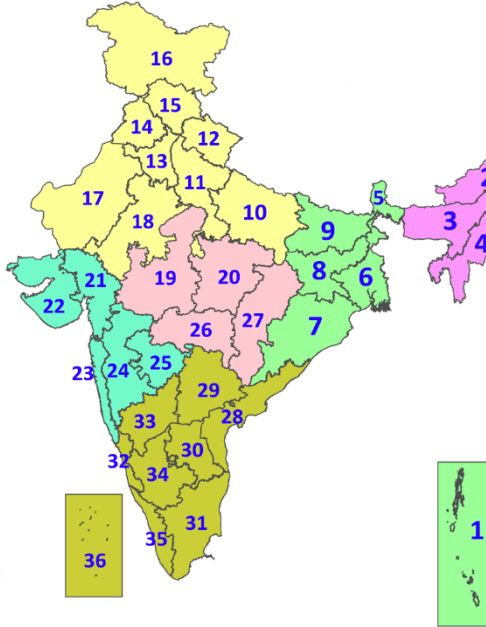
Legends & abbreviations:

- ❖ **Heavy Rain:**64.5-115.5mm; **Very Heavy Rain:**115.6-204.4mm; **Extremely Heavy Rain:** >204.4mm.
- ❖ **Obsy. :** Observatory; **AWS:** Automatic Weather Station; **ARG:** Automatic Rain Gauge; **dist.:** District; **NH:** National Highway; **KVK:** Krishi Vigyan Kendra; **DVC:** Damodar Valley Corporation; **PTO:** Part Time Office, **Aero:** Aerodrome, **IAF:** Indian Air Force.

- ❖ **Region wise classification of meteorological Sub-Divisions:**
 - ✓ **Northwest India:** Western Himalayan Region (Jammu-Kashmir-Ladakh-Gilgit-Baltistan-Muzaffarabad, Himachal Pradesh and Uttarakhand); Punjab, Haryana-Chandigarh-Delhi; West Uttar Pradesh, East Uttar Pradesh, West Rajasthan and East Rajasthan.
 - ✓ **Central India:** West Madhya Pradesh, East Madhya Pradesh, Vidarbha and Chhattisgarh.
 - ✓ **East India:** Bihar, Jharkhand, Sub-Himalayan West Bengal & Sikkim; Gangetic West Bengal, Odisha and Andaman & Nicobar Islands.
 - ✓ **Northeast India:** Arunachal Pradesh, Assam & Meghalaya and Nagaland, Manipur, Mizoram & Tripura.
 - ✓ **West India:** Gujarat Region, Saurashtra & Kutch, Konkan & Goa, Madhya Maharashtra and Marathawada.
 - ✓ **South India:** Coastal Andhra Pradesh & Yanam, Telangana, Rayalaseema, Coastal Karnataka, North Interior Karnataka, South Interior Karnataka, Kerala & Mahe, Tamil Nadu, Puducherry & Karaikal and Lakshadweep.

LEGENDS

1. अंडमान और निकोबार द्वीपसमूह
2. अरुणाचल प्रदेश
3. असम और मेघालय
4. नागालैंड, मणिपुर, मिजोरम और त्रिपुरा
5. उप-हिमालयी पश्चिम बंगाल और सिक्किम
6. गंगीय पश्चिम बंगाल
7. ओडिशा
8. झारखंड
9. बिहार
10. पूर्वी उत्तर प्रदेश
11. पश्चिम उत्तर प्रदेश
12. उत्तराखंड
13. हरियाणा, चंडीगढ़ और दिल्ली
14. पंजाब
15. हिमाचल प्रदेश
16. जम्मू और कश्मीर और लद्दाख
17. पश्चिम राजस्थान
18. पूर्वी राजस्थान
19. पश्चिम मध्य प्रदेश
20. पूर्वी मध्य प्रदेश
21. गुजरात
22. सौराष्ट्र
23. कोंकण और गोवा
24. मध्य महाराष्ट्र
25. मराठवाड़ा
26. विदर्भ
27. छत्तीसगढ़
28. तटीय आंध्र प्रदेश और यनम
29. तेलंगाना
30. रायलसीमा
31. तमिलनाडु, पुडुचेरी और कराईकल
32. तटीय कर्नाटक
33. आंतरिक उत्तरी कर्नाटक
34. आंतरिक दक्षिणी कर्नाटक
35. केरल और माहे
36. लक्षद्वीप



1. Andaman & Nicobar Islands
2. Arunachal Pradesh
3. Assam & Meghalaya
4. Nagaland, Manipur, Mizoram & Tripura
5. Sub-Himalayan West Bengal & Sikkim
6. Gangetic West Bengal
7. Odisha
8. Jharkhand
9. Bihar
10. East Uttar Pradesh
11. West Uttar Pradesh
12. Uttarakhand
13. Haryana, Chandigarh & Delhi
14. Punjab
15. Himachal Pradesh
16. Jammu & Kashmir and Ladakh
17. West Rajasthan
18. East Rajasthan
19. West Madhya Pradesh
20. East Madhya Pradesh
21. Gujarat
22. Saurashtra
23. Konkan & Goa
24. Madhya Maharashtra
25. Marathwada
26. Vidarbha
27. Chhattisgarh
28. Coastal Andhra Pradesh & Yanam
29. Telangana
30. Rayalaseema
31. Tamilnadu, Puducherry & Karaikal
32. Coastal Karnataka
33. North Interior Karnataka
34. South Interior Karnataka
35. Kerala & Mahe
36. Lakshadweep

SPATIAL DISTRIBUTION (% of Stations reporting)

% Stations	Category	% Stations	Category
76-100	Widespread (WS/Most Places)	26-50	Scattered (SCT/A Few Places)
51-75	Fairly Widespread (FWS/Many Places)	1-25	Isolated (ISOL)

Fog	Heavy Snow	Cold Wave
Heavy Rain	Dust Storm	Cold Day
Very Heavy Rain	Heat Wave	Ground Frost
Extremely Heavy Rain	Warm Night	
Thunder & Lightning	Hot Day	
Hailstorm	Hot & Humid	
Dust Raising Winds	Strong Surface Winds	

COLOUR CODED WARNING

No Warning (No Action)
Watch (Be Aware)
Alert (Be Prepared To Take Action)
Warning (Take Action)

Probabilistic Forecast

Terms	Probability of Occurrence (%)
Unlikely	< 25
Likely	25 - 50
Very Likely	50 - 75
Most Likely	> 75

* Red colour warning does not mean "Red Alert", Red colour warning means "Take Action".
Forecast and Warning for any day is valid from 0830 hours IST of day till 0830 hours IST of next day.
For more details, kindly visit <https://mausam.imd.gov.in> or contact: 011-2434-4599
(Service to the Nation since 1875)

DEFINITION/CRITERIA

Rain/ Snow *	Heavy: 64.5 to 115.5 mm/cm * Very Heavy: 115.6 to 204.4 mm/cm* Extremely Heavy: > 204.4 mm/cm *
Heat Wave	<p>When maximum temperature of a station reaches $\geq 40^\circ\text{C}$ for plains and $\geq 30^\circ\text{C}$ for hilly regions</p> <p>(a) Based on Departure from normal</p> <p>Heat Wave: Maximum Temperature Departure from normal 4.5°C to 6.4°C.</p> <p>Severe Heat Wave: Maximum Temperature Departure from normal $\geq 6.5^\circ\text{C}$</p> <p>(b). Based on Actual maximum temperature</p> <p>Heat Wave: When actual maximum temperature $\geq 45^\circ\text{C}$.</p> <p>Severe Heat Wave: When actual maximum temperature $\geq 47^\circ\text{C}$</p> <p>(c). Criteria for heat wave for coastal stations When maximum temperature departure is $>4.5^\circ\text{C}$ from normal. Heat Wave may be described provided maximum temperature $\geq 37^\circ\text{C}$</p>
Warm Night	<p>When maximum temperature remains 40°C</p> <p>Warm Night: When minimum temperature departure 4.5°C to 6.4°C.</p> <p>Severe Warm Night: When minimum temperature departure $>6.4^\circ\text{C}$.</p>
Cold Wave	<p>When minimum temperature of a station $\leq 10^\circ\text{C}$ for plains and $\leq 0^\circ\text{C}$ for hilly regions.</p> <p>(a). Based on departure</p> <p>Cold Wave: Minimum Temperature Departure from normal -4.5°C to -6.4°C.</p> <p>Severe Cold Wave: Minimum Temperature Departure from normal $\leq -6.5^\circ\text{C}$</p> <p>(b) Based on actual Minimum Temperature (for Plains only)</p> <p>Cold Wave : When Minimum Temperature is $\leq 4.0^\circ\text{C}$</p> <p>Severe Cold Wave: When Minimum Temperature is $\leq 2.0^\circ\text{C}$</p> <p>(c) For Coastal Stations When Minimum Temperature departure is $\leq -4.5^\circ\text{C}$ & actual Minimum Temperature is $\leq 15^\circ\text{C}$</p>
Cold Day	<p>When minimum temperature of a station $\leq 10^\circ\text{C}$ for plains and $\leq 0^\circ\text{C}$ for hilly regions</p> <p>Based on departure</p> <p>Cold Day: Maximum Temperature Departure from normal -4.5°C to -6.4°C.</p> <p>Severe Cold Day: Maximum Temperature Departure from normal $\leq -6.5^\circ\text{C}$</p>
Fog	<p>Phenomenon of small droplets suspended in air and the horizontal visibility $< 1\text{km}$</p> <p>Moderate Fog: When the visibility between 500-200 metres</p> <p>Dense Fog: when the visibility between 50- 200 metres</p> <p>Very Dense Fog: when the visibility < 50 metres</p>
Thunderstorm	Sudden electrical discharges manifested by a flash of light (Lightning) and a sharp rumbling sound (thunder)
Dust/Sand Storm	An ensemble of particles of dust or sand energetically lifted to great heights by a strong and turbulent wind.
Frost	<p>Ice deposits on ground</p> <p>Air temperature $\leq 4^\circ\text{C}$ (over Plains)</p>
Squall	<p>A strong wind that rises suddenly, lasts for atleast 1 minute.</p> <p>Moderate: Wind speed 52-61 kmph</p> <p>Severe: Wind speed 62-87 kmph</p> <p>Very Severe: Wind speed >87 kmph</p>
Sea State	<p>Effect of various waves in the sea over specific area</p> <p>Rough to very rough: Wind speed 41-62 kmph (22-33 knots) & Wave height 2.5-6 metre</p> <p>High to very high: Wind speed 63-117 kmph (34-63 knots) & Wave height 6-14 metre</p> <p>Phenomenal: Wind speed >117 kmph (>63 knots) & Wave height >14 metre</p>
Cyclone	<p>Cyclonic Storm: Wind speed 62-87 kmph (34-47 knots)</p> <p>Severe Cyclonic Storm: Wind speed 88-117 kmph (48-63 knots)</p> <p>Very Severe Cyclonic Storm: Wind speed 118-165 kmph (64 - 89 knots)</p> <p>Extremely Severe Cyclonic Storm: Wind speed 166-220 kmph (90 -119 knots)</p> <p>Super Cyclone Strom: Wind speed >220 kmph (>119 knots)</p>