

Monday, November 25, 2024  
Time of Issue: 2045 hours IST  
(NIGHT)

## All India Impact Based Weather Warning Bulletin

Weather Warnings for next 7 days is given below:

(Graphics for warnings & rainfall distribution (Table 1) are given below the text:

### 25 November (Day 1):

- ❖ **Heavy to very Heavy rainfall ( $\geq 12$  cm)** very likely at isolated places over coastal Tamil Nadu & Puducherry.
- ❖ **Thunderstorm accompanied with lightning** very likely at isolated places over Tamil Nadu, Puducherry & Karaikal and Kerala & Mahe.
- ❖ **Dense fog** very likely in isolated pockets of Himachal Pradesh in night/morning hours.
- ❖ **Squally weather with wind speed 35 kmph to 45 kmph gusting to 55 kmph** is likely to prevailing along and off south Kerala coast, over gulf of Mannar & adjoining parts of Comorin area, over most parts of south Bay of Bengal along & off Sri Lanka, Tamil Nadu & Puducherry coasts and adjoining parts of south Andaman sea. **Squally weather with wind speed 45 kmph to 55 kmph gusting to 65 kmph** is likely to prevailing over southern parts of southwest & adjoining parts of southeast Bay of Bengal. Fishermen are advised not to venture into these areas.

### 26 November (Day 2):

- ❖ **Heavy to very Heavy rainfall with extremely heavy falls ( $\geq 20$  cm)** very likely at isolated places over Tamil Nadu, Puducherry & Karaikal; **Heavy rainfall ( $\geq 7$  cm)** at isolated places over Kerala & Mahe and Coastal Andhra Pradesh & Yanam.
- ❖ **Thunderstorm accompanied with lightning** very likely at isolated places over Tamil Nadu, Puducherry & Karaikal, Kerala & Mahe, Rayalaseema and Coastal Andhra Pradesh & Yanam.
- ❖ **Dense fog** very likely in isolated pockets of Himachal Pradesh in night/morning hours.
- ❖ **Squally weather with wind speed 35 kmph to 45 kmph gusting to 55 kmph** is likely to prevailing along and off south Kerala coast, over gulf of Mannar and Comorin area, over southwest Bay of Bengal and adjoining parts of southeast and west central Bay of Bengal, along and off Sri Lanka coast, Tamil Nadu, Puducherry & south Andhra Pradesh coasts. **Squally weather with wind speed 45 kmph to 55 kmph gusting to 65 kmph** is likely to prevailing over many parts of southwest and westcentral Bay of Bengal, along and off silence coast. **Squally weather with wind speed 55 kmph to 65 kmph gusting to 75 kmph** is likely to prevailing over some parts of southwest Bay of Bengal, off Sri Lanka coast. Fishermen are advised not to venture into these areas.

### 27 November (Day 3):

- ❖ **Heavy to very Heavy rainfall with extremely heavy falls ( $\geq 20$  cm)** very likely at isolated places over Tamil Nadu, Puducherry & Karaikal; **Heavy rainfall ( $\geq 7$  cm)** at isolated places over Kerala & Mahe and Coastal Andhra Pradesh & Yanam.
- ❖ **Thunderstorm accompanied with lightning** very likely at isolated places over Tamil Nadu, Puducherry & Karaikal, Kerala & Mahe, Rayalaseema and Coastal Andhra Pradesh & Yanam.
- ❖ **Dense fog** very likely in isolated pockets of Himachal Pradesh, Punjab, Haryana-Chandigarh-Delhi and Uttar Pradesh in night/morning hours.
- ❖ **Squally weather with wind speed 35 kmph to 45 kmph gusting to 55 kmph** is likely to prevailing along and off south Kerala coast, over gulf of Mannar and Comorin area, over many parts of southwest & adjoining parts of southeast Bay of Bengal, over most parts westcentral Bay of Bengal, along and off Sri Lanka, Tamil Nadu, Puducherry & Andhra Pradesh coasts. **Squally weather with wind speed 45 kmph to 55 kmph gusting to 65 kmph** is likely to prevailing over many parts of southwest and westcentral along and off Sri Lanka, Tamil Nadu & south Andhra Pradesh coasts. **Squally weather with wind speed 55 kmph to 65 kmph gusting to 75 kmph** is likely to prevailing over western parts of southwest and adjoining parts of west central Bay of Bengal, along and off north Sri Lanka, Tamil Nadu coasts & adjoining south Andhra Pradesh coast. Fishermen are advised not to venture into these areas.

#### 28 November (Day 4):

- ❖ **Heavy to very Heavy rainfall ( $\geq 12$  cm)** likely at isolated places over Tamil Nadu, Puducherry & Karaikal; **Heavy rainfall ( $\geq 7$  cm)** at isolated places over Nagaland, Manipur, Mizoram & Tripura, Kerala & Mahe and Coastal Andhra Pradesh & Yanam.
- ❖ **Thunderstorm accompanied with lightning** likely at isolated places over Nagaland, Manipur, Mizoram & Tripura, Tamil Nadu, Puducherry & Karaikal, Rayalaseema and Coastal Andhra Pradesh & Yanam.
- ❖ **Dense fog** likely in isolated pockets of Himachal Pradesh, Punjab, Haryana-Chandigarh-Delhi and Uttar Pradesh in night/morning hours.
- ❖ **Squally weather with wind speed 35 kmph to 45 kmph gusting to 55 kmph** is likely to prevailing along and off south Kerala coast, over gulf of Mannar and Comorin area, over southwest and adjoining parts of southeast Bay of Bengal, many parts of westcentral Bay of Bengal, along and off Sri Lanka, Tamil Nadu, Puducherry & Andhra Pradesh coasts. **Squally weather with wind speed 45 kmph to 55 kmph gusting to 65 kmph** is likely to prevailing over many parts of southwest and westcentral Bay of Bengal, along and off Sri Lanka, Tamil Nadu & south Andhra Pradesh coasts. **Squally weather with wind speed 55 kmph to 65 kmph gusting to 75 kmph** is likely to prevailing over some western parts of southwest and adjoining parts of west central Bay of Bengal, along and off Sri Lanka, Tamil Nadu & adjoining south Andhra Pradesh coasts. Fishermen are advised not to venture into these areas.

#### 29 November (Day 5):

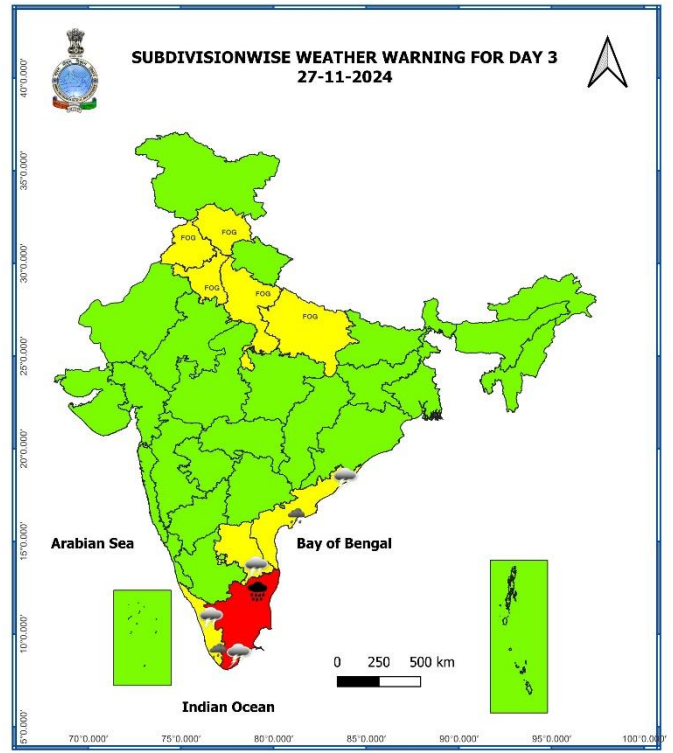
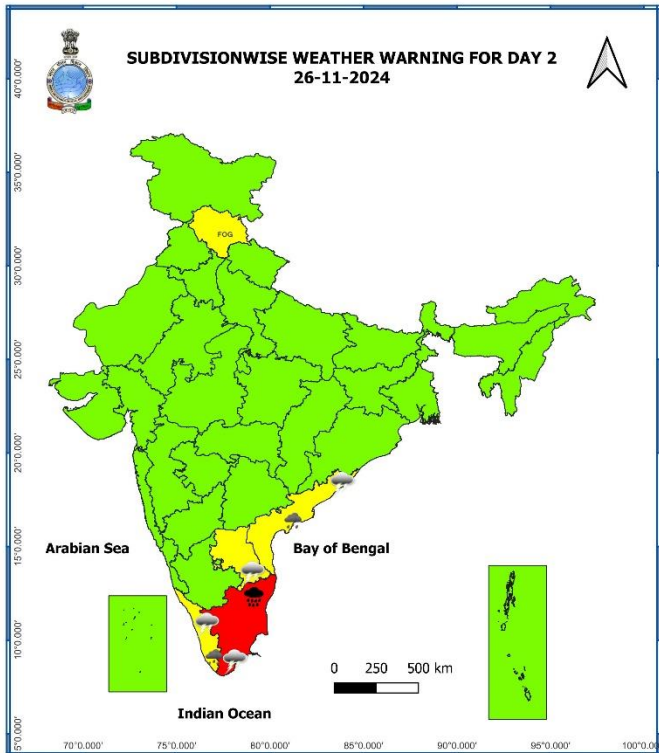
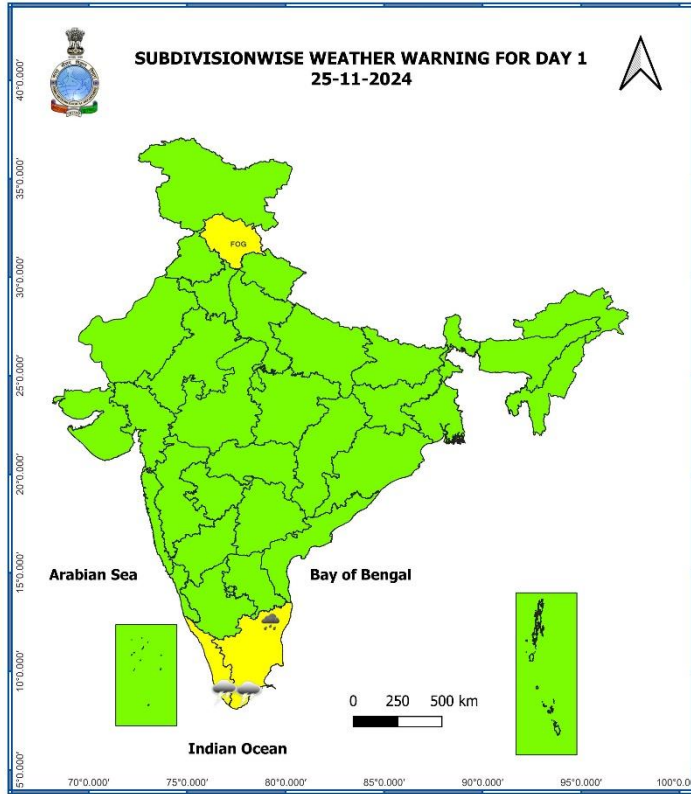
- ❖ **Heavy rainfall ( $\geq 7$  cm)** likely at isolated places over Tamil Nadu, Puducherry & Karaikal and Coastal Andhra Pradesh & Yanam.
- ❖ **Thunderstorm accompanied with lightning** likely at isolated places over Tamil Nadu, Puducherry & Karaikal, Rayalaseema and Coastal Andhra Pradesh & Yanam.
- ❖ **Dense fog** likely in isolated pockets of Himachal Pradesh, Punjab, Haryana-Chandigarh-Delhi and Uttar Pradesh in night/morning hours.
- ❖ **Squally weather with wind speed 35 kmph to 45 kmph gusting to 55 kmph** is likely to prevailing along and off south Kerala coast, over gulf of Mannar and Comorin area, over many parts of southwest & adjoining parts of westcentral Bay of Bengal, along and off Sri Lanka, Tamil Nadu, Puducherry & south Andhra Pradesh coasts. **Squally weather with wind speed 45 kmph to 55 kmph gusting to 65 kmph** is likely to prevailing over along and off north Tamil Nadu & adjoining south Andhra Pradesh coasts and adjoining sea area. Fishermen are advised not to venture into these areas.

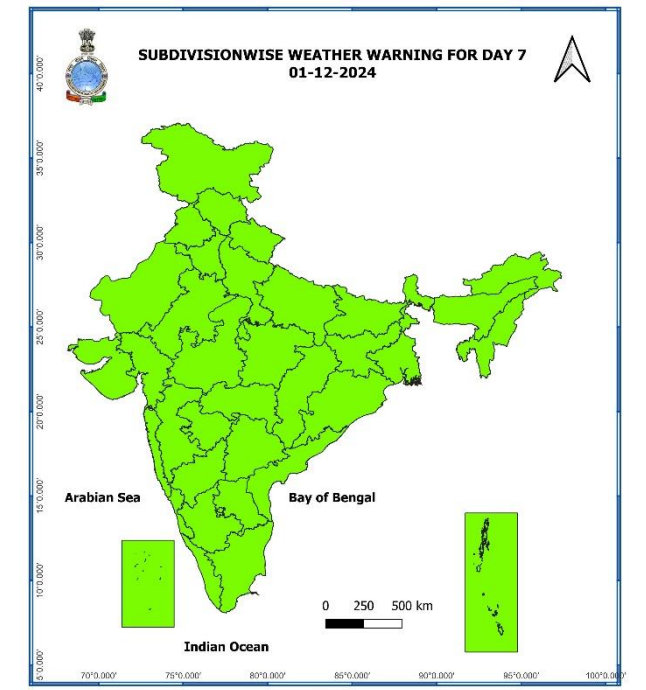
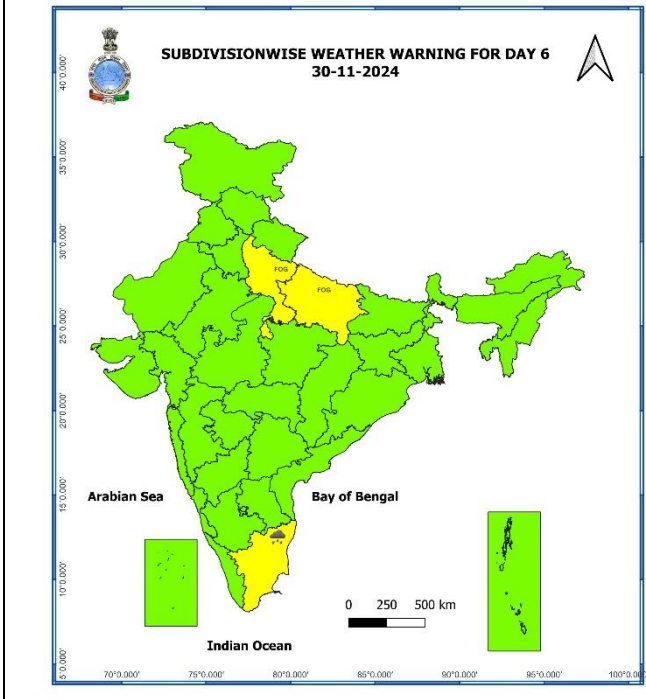
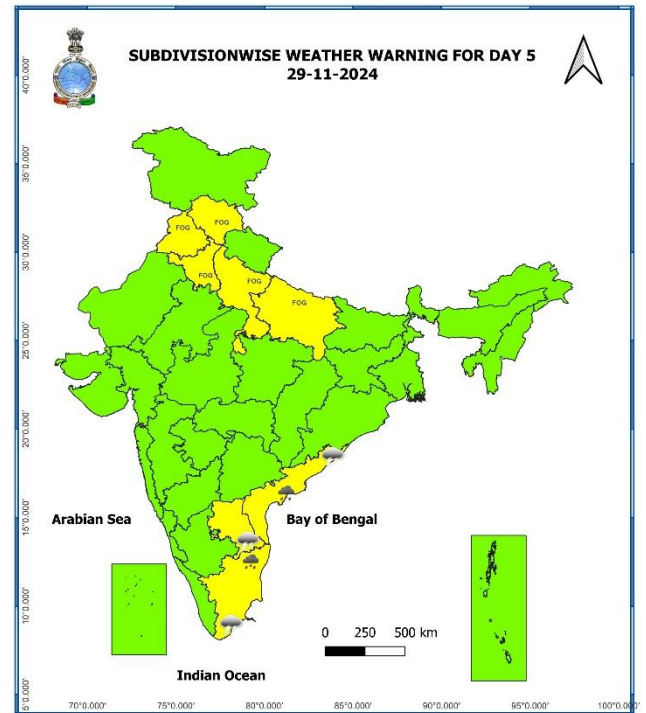
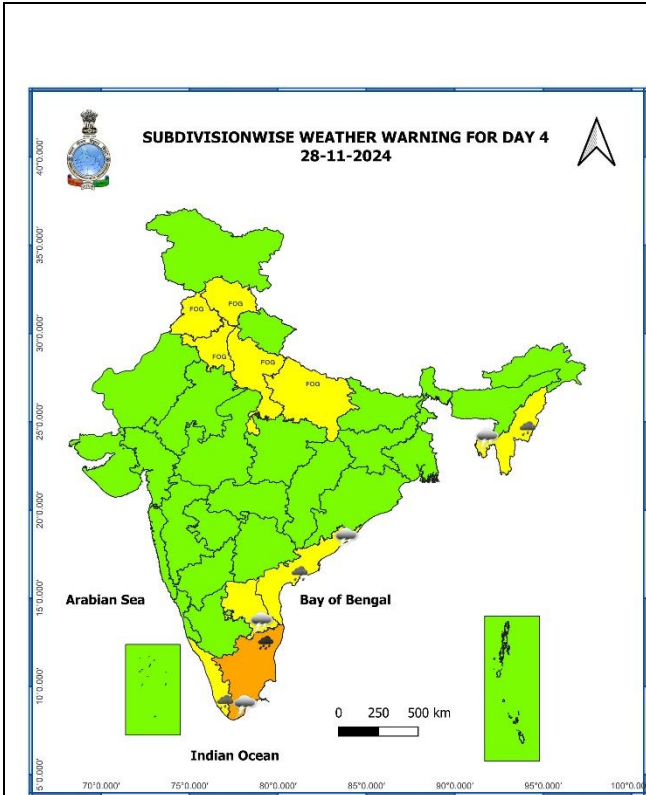
#### 30 November (Day 6):

- ❖ **Heavy rainfall ( $\geq 7$  cm)** likely at isolated places over Tamil Nadu, Puducherry & Karaikal.
- ❖ **Dense fog** likely in isolated pockets of Uttar Pradesh in night/morning hours.

#### 01 December (Day 7):

- ❖ **No Warning.**





- Action may be taken based on **ORANGE AND RED** COLOUR warnings.
- Vulnerable regions likely urban and hilly areas action may be initiated for heavy rainfall warning.
- As the lead period increases forecast accuracy decreases.

Table-1

7 Days Rainfall Forecast								
S. No.	Subdivision	25-Nov	26-Nov	27-Nov	28-Nov	29-Nov	30-Nov	01-Dec
		Day 1	Day 2	Day 3	Day 4	Day 5	Day 6	Day 7
1	ANDAMAN & NICOBAR ISLANDS	WS	WS	FWS	FWS	FWS	FWS	FWS
2	ARUNACHAL PRADESH	ISOL	ISOL	ISOL	DRY	DRY	DRY	ISOL
3	ASSAM & MEGHALAYA	ISOL	DRY	DRY	ISOL	ISOL	ISOL	ISOL
4	NAGALAND, MANIPUR, MIZORAM & TRIPURA	DRY	DRY	ISOL	WS	WS	SCT	ISOL
5	SUB-HIMALAYAN WEST BENGAL & SIKKIM	ISOL	ISOL	ISOL	DRY	DRY	DRY	DRY
6	GANGETIC WEST BENGAL	DRY	DRY	DRY	DRY	ISOL	ISOL	ISOL
7	ODISHA	DRY	DRY	DRY	ISOL	ISOL	ISOL	ISOL
8	JHARKHAND	DRY	DRY	DRY	DRY	DRY	DRY	DRY
9	BIHAR	DRY	DRY	DRY	DRY	DRY	DRY	DRY
10	EAST UTTAR PRADESH	DRY	DRY	DRY	DRY	DRY	DRY	DRY
11	WEST UTTAR PRADESH	DRY	DRY	DRY	DRY	DRY	DRY	DRY
12	UTTARAKHAND	DRY	DRY	DRY	DRY	DRY	DRY	DRY
13	HARYANA CHANDIGARH & DELHI	DRY	DRY	DRY	DRY	DRY	DRY	DRY
14	PUNJAB	DRY	DRY	DRY	DRY	DRY	DRY	DRY
15	HIMACHAL PRADESH	DRY	DRY	DRY	DRY	DRY	ISOL	DRY
16	JAMMU & KASHMIR AND LADAKH	DRY	DRY	DRY	DRY	ISOL	DRY	DRY
17	WEST RAJASTHAN	DRY	DRY	DRY	DRY	DRY	DRY	DRY
18	EAST RAJASTHAN	DRY	DRY	DRY	DRY	DRY	DRY	DRY
19	WEST MADHYA PRADESH	DRY	DRY	DRY	DRY	DRY	DRY	DRY
20	EAST MADHYA PRADESH	DRY	DRY	DRY	DRY	DRY	DRY	DRY
21	GUJARAT REGION	DRY	DRY	DRY	DRY	DRY	DRY	DRY
22	SAURASHTRA & KUTCH	DRY	DRY	DRY	DRY	DRY	DRY	DRY
23	KONKAN & GOA	DRY	DRY	DRY	DRY	DRY	DRY	DRY
24	MADHYA MAHARASHTRA	DRY	DRY	DRY	DRY	DRY	DRY	DRY
25	MARATHAWADA	DRY	DRY	DRY	DRY	DRY	DRY	DRY
26	VIDARBHA	DRY	DRY	DRY	DRY	DRY	DRY	DRY
27	CHHATTISGARH	DRY	DRY	DRY	DRY	DRY	DRY	DRY
28	COASTAL ANDHRA PRADESH & YANAM	ISOL	ISOL	SCT	SCT	FWS	FWS	FWS
29	TELANGANA	DRY	DRY	DRY	DRY	DRY	DRY	ISOL
30	RAYALASEEMA	ISOL	ISOL	SCT	SCT	FWS	FWS	FWS
31	TAMILNADU PUDUCHERRY & KARAIKAL	ISOL	FWS	FWS	SCT	SCT	SCT	SCT
32	COASTAL KARNATAKA	DRY	DRY	DRY	DRY	DRY	DRY	DRY
33	NORTH INTERIOR KARNATAKA	DRY	DRY	DRY	DRY	DRY	DRY	DRY
34	SOUTH INTERIOR KARNATAKA	DRY	DRY	DRY	DRY	DRY	ISOL	ISOL
35	KERALA & MAHE	SCT	WS	FWS	SCT	SCT	FWS	FWS
36	LAKSHADWEEP	DRY	SCT	SCT	SCT	SCT	SCT	SCT

• As the lead period increases forecast accuracy decreases.

**Impact & Action Suggested due to isolated extremely heavy rainfall** over Tamil Nadu, Puducherry & Karaikal on 26<sup>th</sup> & 27<sup>th</sup> and **isolated heavy to very heavy rainfall** on 25<sup>th</sup> & 28<sup>th</sup> November 2024.

#### A. Impact Expected

- ❖ Localized Flooding of roads, water logging in low lying areas and closure of underpasses mainly in urban areas of the above region.
- ❖ Occasional reduction in visibility due to heavy rainfall.
- ❖ Disruption of traffic in major cities due to water logging in roads leading to increased travel time.
- ❖ Minor damage to kutcha roads.
- ❖ Possibilities of damage to vulnerable structure.
- ❖ Localized Landslides/Mudslides
- ❖ Damage to horticulture and standing crops in some areas due to inundation.
- ❖ It may lead to riverine flooding in some river catchments (for riverine flooding please visit Web page of CWC).

#### B. Action Suggested

- ❖ Check for traffic congestion on your route before leaving for your destination.
- ❖ Follow any traffic advisories that are issued in this regard.
- ❖ Avoid going to areas that face the water logging problems often.
- ❖ Avoid staying in vulnerable structure.

### Impact expected due to dense/ very dense fog in the late night /morning hours

#### ❖ Transport and Aviation:

- May affect some airports, highways and railway routes in the areas of met- sub-division.
- Difficult driving conditions with slower journey times.
- Unless taken precautionary measures, it may lead to some road traffic collisions.

#### ❖ Power Sector:

- Chances of Tripping of Power lines in the very dense fog routes.

#### ❖ Human Health:

- Lung related health impacts: Dense fog contains particulate matter and other pollutants and in case exposed it gets lodged in the lungs, clogging them and decreasing their functional capacity which increases episodes of wheezing, coughing and shortness of breath.
- Impact on people having asthma bronchitis: Long time exposure to dense fog may cause respiratory problem for people having asthma bronchitis and other lung related health problems.
- Eye Irritation: Dense fog contains pollutions of various types and these Pollutants in the air if exposed may tend to irritate the membranes of the eye causing various infections leading to redness or swelling of the eye.

#### Action suggested:

#### ❖ Transport and Aviation:

- Be careful while driving or outing through any transport.
- Use fog lights during driving.
- Be in touch with airlines, railways and state transport for schedule of your journey.

#### ❖ Power Sector:

- To keep ready Maintenance Team
- Human Health: To avoid outing until unless emergency and to cover the face.

## Agromet advisories for Heavy Rainfall likely over Tamil Nadu, Kerala and Coastal Andhra Pradesh:

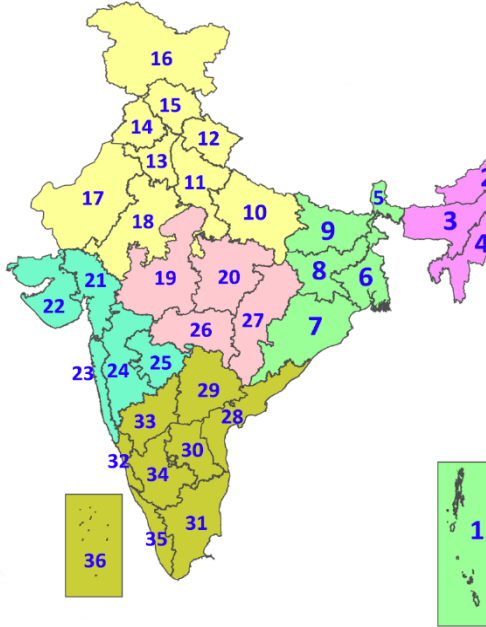
- ✓ In **Tamil Nadu**, provide adequate drainage facilities for the removal of excess water from rice, cotton, sugarcane, turmeric and vegetable fields, coconut and banana orchards. Undertake propping in sugarcane. Provide mechanical support to banana plants to prevent lodging.
- ✓ Make arrangements to drain out excess water from the standing crop fields and fruit orchards in Kerala and Coastal Andhra Pradesh.
- ✓ Keep the harvested produce at safer places.
- ✓ Provide mechanical support to horticultural crops and staking to vegetables.

## Legends & abbreviations:

- ❖ **Heavy Rain:**64.5-115.5mm; **Very Heavy Rain:**115.6-204.4mm; **Extremely Heavy Rain:** >204.4mm.
- ❖ **Obsy.:** Observatory; **AWS:** Automatic Weather Station; **ARG:** Automatic Rain Gauge; **dist.:** District; **NH:** National Highway; **KVK:** Krishi Vigyan Kendra; **DVC:** Damodar Valley Corporation; **PTO:** Part Time Office, **Aero:** Aerodrome, **IAF:** Indian Air Force.
- ❖ **Region wise classification of meteorological Sub-Divisions:**
  - ✓ **Northwest India:** Western Himalayan Region (Jammu-Kashmir-Ladakh-Gilgit-Baltistan-Muzaffarabad, Himachal Pradesh and Uttarakhand); Punjab, Haryana-Chandigarh-Delhi; West Uttar Pradesh, East Uttar Pradesh, West Rajasthan and East Rajasthan.
  - ✓ **Central India:** West Madhya Pradesh, East Madhya Pradesh, Vidarbha and Chhattisgarh.
  - ✓ **East India:** Bihar, Jharkhand, Sub-Himalayan West Bengal & Sikkim; Gangetic West Bengal, Odisha and Andaman & Nicobar Islands.
  - ✓ **Northeast India:** Arunachal Pradesh, Assam & Meghalaya and Nagaland, Manipur, Mizoram & Tripura.
  - ✓ **West India:** Gujarat Region, Saurashtra & Kutch, Konkan & Goa, Madhya Maharashtra and Marathawada.
  - ✓ **South India:** Coastal Andhra Pradesh & Yanam, Telangana, Rayalaseema, Coastal Karnataka, North Interior Karnataka, South Interior Karnataka, Kerala & Mahe, Tamil Nadu, Puducherry & Karaikal and Lakshadweep.

## LEGENDS

1. अंडमान और निकोबार द्वीपसमूह
2. अरुणाचल प्रदेश
3. असम और मेघालय
4. नागालैंड, मणिपुर, मिजोरम और त्रिपुरा
5. उप-हिमालयी पश्चिम बंगाल और सिक्किम
6. गंगीय पश्चिम बंगाल
7. ओडिशा
8. झारखंड
9. बिहार
10. पूर्वी उत्तर प्रदेश
11. पश्चिम उत्तर प्रदेश
12. उत्तराखंड
13. हरियाणा, चंडीगढ़ और दिल्ली
14. पंजाब
15. हिमाचल प्रदेश
16. जम्मू और कश्मीर और लद्दाख
17. पश्चिम राजस्थान
18. पूर्वी राजस्थान
19. पश्चिम मध्य प्रदेश
20. पूर्वी मध्य प्रदेश
21. गुजरात
22. सौराष्ट्र
23. कोंकण और गोवा
24. मध्य महाराष्ट्र
25. मराठवाड़ा
26. विदर्भ
27. छत्तीसगढ़
28. तटीय आंध्र प्रदेश और यनम
29. तेलंगाना
30. रायलसीमा
31. तमिलनाडु, पुडुचेरी और कराईकल
32. तटीय कर्नाटक
33. आंतरिक उत्तरी कर्नाटक
34. आंतरिक दक्षिणी कर्नाटक
35. केरल और माहे
36. लक्षद्वीप



1. Andaman & Nicobar Islands
2. Arunachal Pradesh
3. Assam & Meghalaya
4. Nagaland, Manipur, Mizoram & Tripura
5. Sub-Himalayan West Bengal & Sikkim
6. Gangetic West Bengal
7. Odisha
8. Jharkhand
9. Bihar
10. East Uttar Pradesh
11. West Uttar Pradesh
12. Uttarakhand
13. Haryana, Chandigarh & Delhi
14. Punjab
15. Himachal Pradesh
16. Jammu & Kashmir and Ladakh
17. West Rajasthan
18. East Rajasthan
19. West Madhya Pradesh
20. East Madhya Pradesh
21. Gujarat
22. Saurashtra
23. Konkan & Goa
24. Madhya Maharashtra
25. Marathwada
26. Vidarbha
27. Chhattisgarh
28. Coastal Andhra Pradesh & Yanam
29. Telangana
30. Rayalaseema
31. Tamilnadu, Puducherry & Karaikal
32. Coastal Karnataka
33. North Interior Karnataka
34. South Interior Karnataka
35. Kerala & Mahe
36. Lakshadweep

## SPATIAL DISTRIBUTION (% of Stations reporting)

% Stations	Category	% Stations	Category
76-100	Widespread (WS/Most Places)	26-50	Scattered (SCT/A Few Places)
51-75	Fairly Widespread (FWS/Many Places)	1-25	Isolated (ISOL)

- |                      |                      |              |
|----------------------|----------------------|--------------|
| Fog                  | Heavy Snow           | Cold Wave    |
| Heavy Rain           | Dust Storm           | Cold Day     |
| Very Heavy Rain      | Heat Wave            | Ground Frost |
| Extremely Heavy Rain | Warm Night           |              |
| Thunder & Lightning  | Hot Day              |              |
| Hailstorm            | Hot & Humid          |              |
| Dust Raising Winds   | Strong Surface Winds |              |

### COLOUR CODED WARNING

No Warning (No Action)
Watch (Be Aware)
Alert (Be Prepared To Take Action)
Warning (Take Action)

### Probabilistic Forecast

Terms	Probability of Occurrence (%)
Unlikely	< 25
Likely	25 - 50
Very Likely	50 - 75
Most Likely	> 75

\* Red colour warning does not mean "Red Alert", Red colour warning means "Take Action".  
Forecast and Warning for any day is valid from 0830 hours IST of day till 0830 hours IST of next day.  
For more details, kindly visit <https://mausam.imd.gov.in> or contact: 011-2434-4599  
(Service to the Nation since 1875)



## DEFINITION/CRITERIA

### Rain/ Snow \*

**Heavy:** 64.5 to 115.5 mm/cm \*  
**Very Heavy:** 115.6 to 204.4 mm/cm\*  
**Extremely Heavy:** > 204.4 mm/cm \*

### Heat Wave

**When maximum temperature of a station reaches  $\geq 40^\circ\text{C}$  for plains and  $\geq 30^\circ\text{C}$  for hilly regions**  
**(a) Based on Departure from normal**

**Heat Wave:** Maximum Temperature Departure from normal  $4.5^\circ\text{C}$  to  $6.4^\circ\text{C}$ .  
**Severe Heat Wave:** Maximum Temperature Departure from normal  $\geq 6.5^\circ\text{C}$

**(b). Based on Actual maximum temperature**

**Heat Wave:** When actual maximum temperature  $\geq 45^\circ\text{C}$ .  
**Severe Heat Wave:** When actual maximum temperature  $\geq 47^\circ\text{C}$

**(c). Criteria for heat wave for coastal stations**

When maximum temperature departure is  $>4.5^\circ\text{C}$  from normal. Heat Wave may be described provided maximum temperature  $\geq 37^\circ\text{C}$

### Warm Night

**When maximum temperature remains  $40^\circ\text{C}$**

**Warm Night:** When minimum temperature departure  $4.5^\circ\text{C}$  to  $6.4^\circ\text{C}$ .  
**Severe Warm Night:** When minimum temperature departure  $>6.4^\circ\text{C}$ .

### Cold Wave

**When minimum temperature of a station  $\leq 10^\circ\text{C}$  for plains and  $\leq 0^\circ\text{C}$  for hilly regions.**  
**(a). Based on departure**

**Cold Wave:** Minimum Temperature Departure from normal  $-4.5^\circ\text{C}$  to  $-6.4^\circ\text{C}$ .  
**Severe Cold Wave:** Minimum Temperature Departure from normal  $\leq -6.5^\circ\text{C}$

**(b) Based on actual Minimum Temperature (for Plains only)**

**Cold Wave :** When Minimum Temperature is  $\leq 4.0^\circ\text{C}$   
**Severe Cold Wave:** When Minimum Temperature is  $\leq 2.0^\circ\text{C}$

**(c) For Coastal Stations**

When Minimum Temperature departure is  $\leq -4.5^\circ\text{C}$  & actual Minimum Temperature is  $\leq 15^\circ\text{C}$

### Cold Day

**When minimum temperature of a station  $\leq 10^\circ\text{C}$  for plains and  $\leq 0^\circ\text{C}$  for hilly regions**  
**Based on departure**

**Cold Day:** Maximum Temperature Departure from normal  $-4.5^\circ\text{C}$  to  $-6.4^\circ\text{C}$ .  
**Severe Cold Day:** Maximum Temperature Departure from normal  $\leq -6.5^\circ\text{C}$

### Fog

**Phenomenon of small droplets suspended in air and the horizontal visibility  $< 1\text{km}$**

**Moderate Fog:** When the visibility between 500-200 metres  
**Dense Fog:** when the visibility between 50- 200 metres  
**Very Dense Fog:** when the visibility  $< 50$  metres

### Thunderstorm

**Sudden electrical discharges manifested by a flash of light (Lightning) and a sharp rumbling sound (thunder)**

### Dust/Sand Storm

**An ensemble of particles of dust or sand energetically lifted to great heights by a strong and turbulent wind.**

### Frost

**Ice deposits on ground**

Air temperature  $\leq 4^\circ\text{C}$  ( over Plains)

### Squall

**A strong wind that rises suddenly, lasts for atleast 1 minute.**

**Moderate:** Wind speed 52-61 kmph  
**Severe:** Wind speed 62-87 kmph  
**Very Severe:** Wind speed  $>87$  kmph

### Sea State

**Effect of various waves in the sea over specific area**

**Rough to very rough:** Wind speed 41-62 kmph (22-33 knots) & Wave height 2.5-6 metre  
**High to very high:** Wind speed 63-117 kmph ( 34-63 knots) & Wave height 6-14 metre  
**Phenomenal:** Wind speed  $>117$  kmph ( $>63$  knots) & Wave height  $>14$  metre

### Cyclone

**Cyclonic Storm:** Wind speed 62-87 kmph (34-47 knots)  
**Severe Cyclonic Storm:** Wind speed 88-117 kmph (48-63 knots)  
**Very Severe Cyclonic Storm:** Wind speed 118-165 kmph (64 - 89 knots)  
**Extremely Severe Cyclonic Storm:** Wind speed 166-220 kmph (90 -119 knots)  
**Super Cyclone Strom:** Wind speed  $>220$  kmph ( $>119$  knots)