



India Meteorological Department

(Ministry of Earth Sciences)

NATIONAL BULLETIN NO.: 03 (BOB/08/2024)

TIME OF ISSUE: 0830 HOURS IST

DATED: 21.12.2024

FROM: INDIA METEOROLOGICAL DEPARTMENT (FAX NO. 24643965/24699216/24623220)
TO: CONTROL ROOM, NDM, MINISTRY OF HOME AFFAIRS (FAX.NO. 23093750)
CONTROL ROOM NDMA (FAX.NO. 26701729)
CABINET SECRETARIAT (FAX.NO.23012284, 23018638)
PS TO HON'BLE MINISTER FOR S & T AND EARTH SCIENCES (FAX NO.23316745)
SECRETARY, MOES (FAX NO. 24629777)
H.Q. (INTEGRATED DEFENCE STAFF AND CDS) (FAX NO. 23005137/23005147)
DIRECTOR GENERAL, DOORDARSHAN (23385843)
DIRECTOR GENERAL, AIR (23421105, 23421219)
PIB MOES (FAX NO. 23389042)
UNI (FAX NO. 23355841)
D.G. NATIONAL DISASTER RESPONSE FORCE (NDRF) (FAX NO. 26105912, 2436 3260)
DIRECTOR, PUNCTUALITY, INDIAN RAILWAYS (FAX NO. 23388503)
CHIEF SECRETARY, ANDAMAN & NICOBAR ISLANDS (FAX NO. 03192-232656)
CHIEF SECRETARY, TAMIL NADU (FAX NO. 044-25672304)
CHIEF SECRETARY, PUDUCHERRY (FAX NO. 0413-2334145)
CHIEF SECRETARY, ANDHRA PRADESH (FAX NO. 0863-2441029)
CHIEF SECRETARY, ODISHA (FAX NO. 0674-2536660)
CHIEF SECRETARY, WEST BENGAL (FAX NO. 033-22144328)

Sub: Depression over westcentral Bay of Bengal off Andhra Pradesh coast

The depression over westcentral Bay of Bengal off Andhra Pradesh coast moved east-northeastwards with the speed of 7 kmph during past 6 hours and lay centred at 0530 hrs IST of 21st December 2024 over the same region, near latitude 13.9°N and longitude 84.2°E, about 450 km east-northeast of Chennai (Tamil Nadu), 440 km south-southeast of Visakhapatnam (Andhra Pradesh) and 600 km south-southwest of Gopalpur (Odisha).

The system is likely to move slowly east-northeastwards maintaining its intensity as a depression for next 12 hours and weaken gradually thereafter in the Sea.

Warnings:

(i) Rainfall warning

Coastal Andhra Pradesh: Light to moderate rainfall at many places with **heavy rainfall** at isolated places is very likely over north coastal Andhra Pradesh on 21st December 2024.

(ii) Wind warning:

Squally wind speed reaching 45-55 kmph gusting to 65 kmph is likely to prevail over westcentral and adjoining southwest Bay of Bengal till morning of 23rd December.

Squally wind speed reaching 40 to 50 kmph gusting to 60 kmph is likely to prevail along and off Andhra Pradesh-north Tamil Nadu coasts till morning of 23rd December;

Squally weather with wind speed reaching 35 to 45 kmph gusting to 55kmph is likely to prevail along & off

Spatial rainfall distribution: Isolated: <25%, A few: 26-50%, Many: 51-75%, Most: 76-100%

Rainfall amount (mm): Heavy rain: 64.5 – 115.5, Very heavy rain: 115.6 – 204.4, Extremely heavy rain: 204.5 or more.

south Odisha coasts on 21st & 22nd December.

(iii) Sea Condition:

Rough to very rough sea conditions are very likely to prevail over westcentral and adjoining southwest Bay of Bengal till morning of 23rd December.

Rough sea conditions are very likely along & off Andhra Pradesh coast-north Tamil Nadu coast till 23rd December and along and off south Odisha coast on 21st & 22nd December.

(iv) Fishermen Warning:

Fishermen are advised not to venture into westcentral & adjoining southwest Bay of Bengal till morning of 23rd December; Along & off Andhra Pradesh coast-north Tamil Nadu coast till 23rd December and along & off south Odisha coast on 21st & 22nd December.

Next Bulletin will be issued on 1130 hrs IST of 21st December 2024.

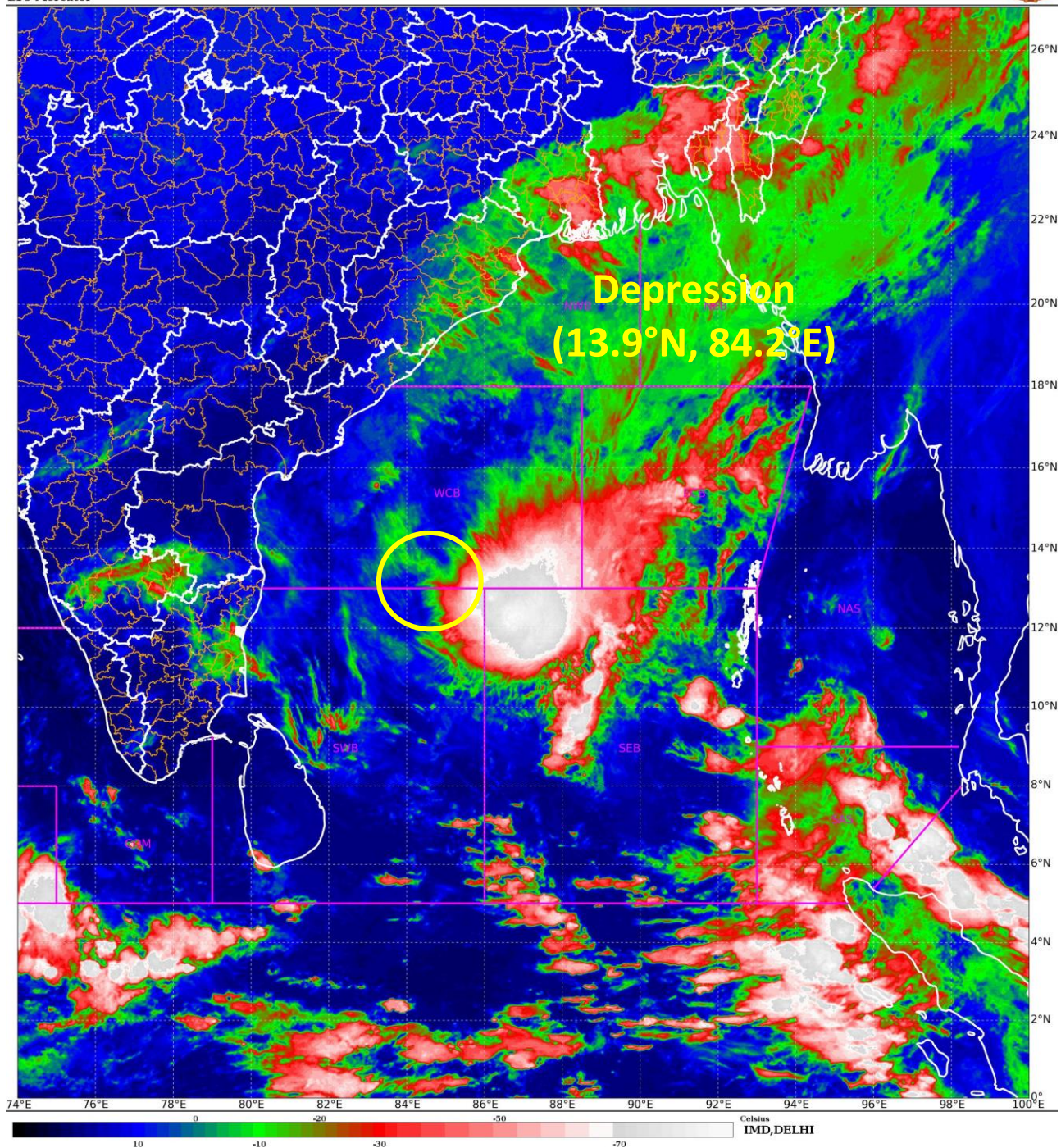
(Dr D. R. Pattanaik)

Scientist-F, RSMC, New Delhi

Copy to: CRS, Pune/RMC Chennai /RMC Kolkata/RMC Guwahati/MC Bhubaneswar/MC Ranchi/MC Patna/MC Raipur/ MC Agartala/ MC Shillong/MC Aizawl

Spatial rainfall distribution: Isolated: <25%, A few: 26-50%, Many: 51-75%, Most: 76-100%

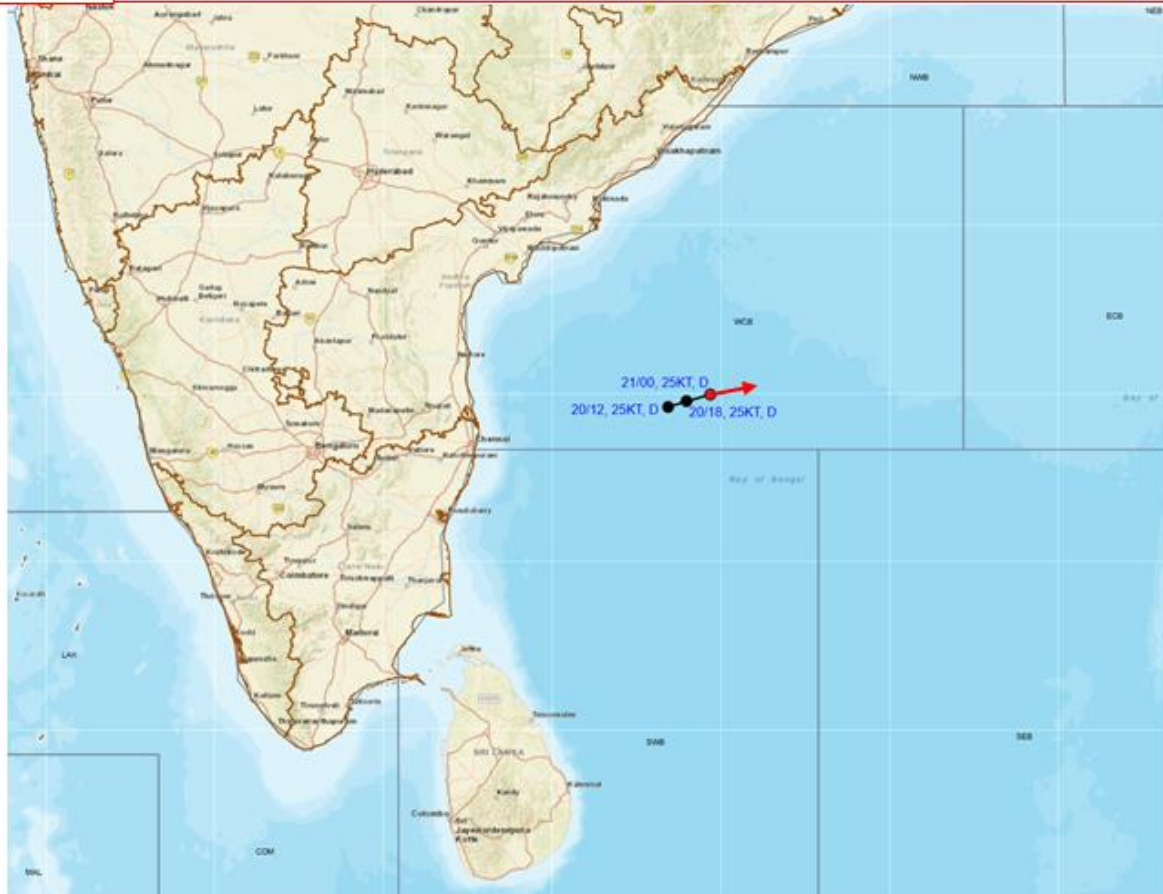
Rainfall amount (mm): Heavy rain: 64.5 – 115.5, Very heavy rain: 115.6 – 204.4, Extremely heavy rain: 204.5 or more.



Spatial rainfall distribution: Isolated: <25%, A few: 26-50%, Many: 51-75%, Most: 76-100%
Rainfall amount (mm): Heavy rain: 64.5 – 115.5, Very heavy rain: 115.6 – 204.4, Extremely heavy rain: 204.5 or more.



OBSERVED AND FORECAST TRACK OF DEPRESSION OVER WESTCENTRAL BAY OF BENGAL OFF ANDHRA PRADESH COAST ON 0000 UTC (0530 HRS. IST) OF 21ST DECEMBER, 2024.



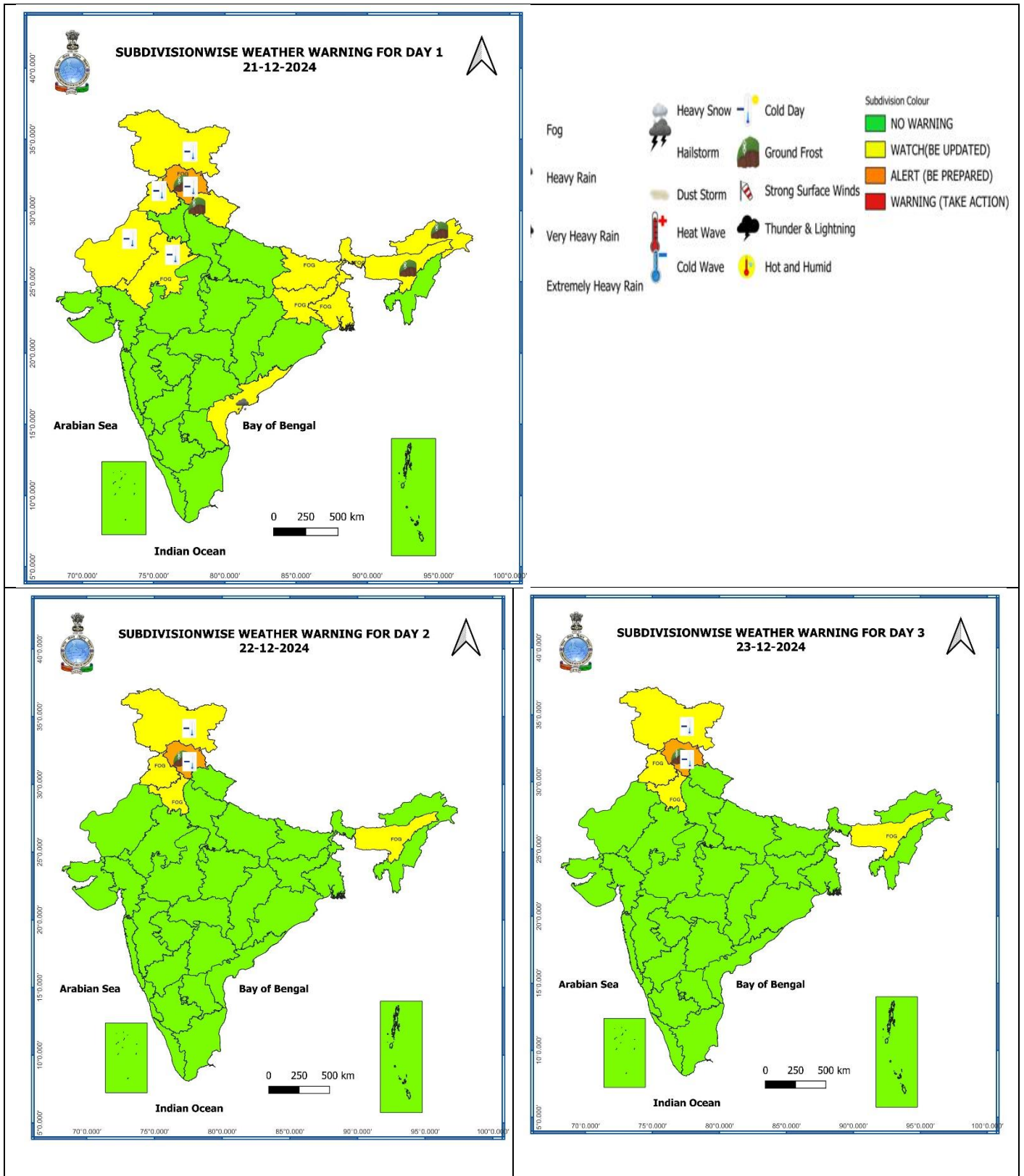
DATE/TIME : IN UTC
 IST : UTC + 0530
 KT : NAUTICAL MILE/HOUR = 1.85 KM/HOUR
 LPA : LOW PRESSURE AREA
 WML : WELL MARKED LOW PRESSURE AREA
 D : DEPRESSION (17-27 KT)
 DD : DEEP DEPRESSION (28-33 KT)
 CS : CYCLONIC STORM (34-47 KT)
 SCS : SEVERE CYCLONIC STORM (48-63 KT)
 VSCS : VERY SEVERE CYCLONIC STORM (64-89 KT)
 ESCS : EXTREMELY SEVERE CYCLONIC STORM (90-119 KT)
 SuCS : SUPER CYCLONIC STORM (≥ 120 KT)

● LESS THAN 34 KT
 ○ 34-47 KT
 ○ ≥ 48 KT
 — OBSERVED TRACK
 — FORECAST TRACK
 ▲ CONE OF UNCERTAINTY

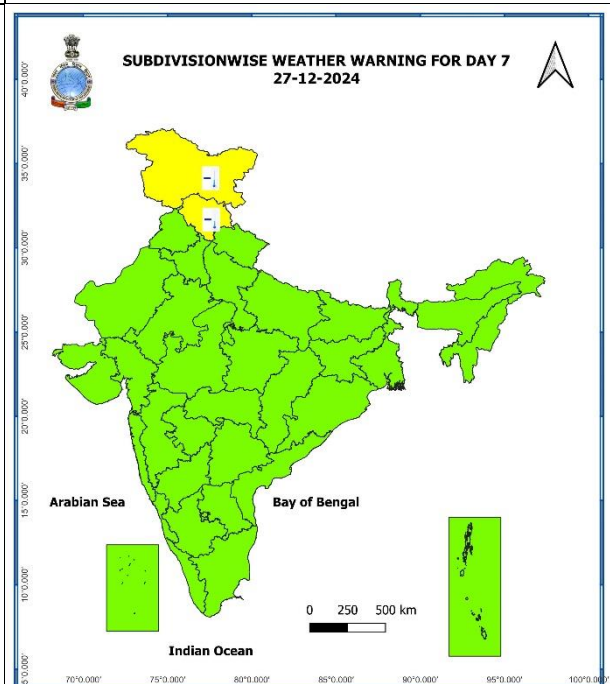
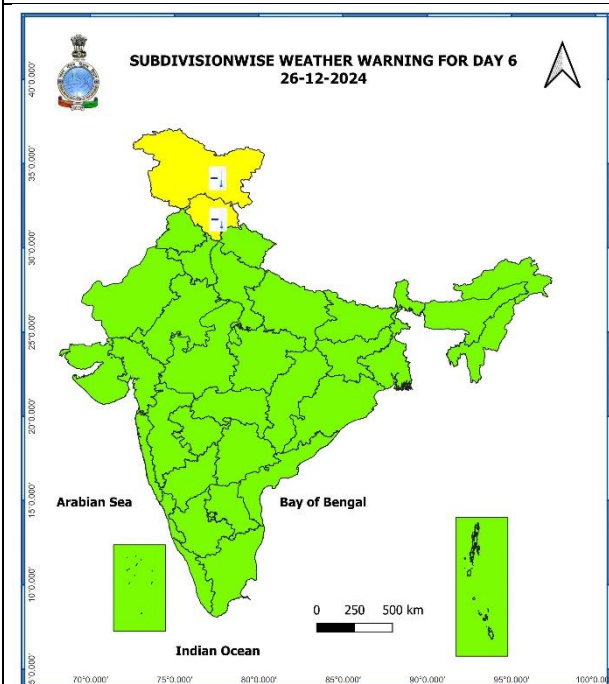
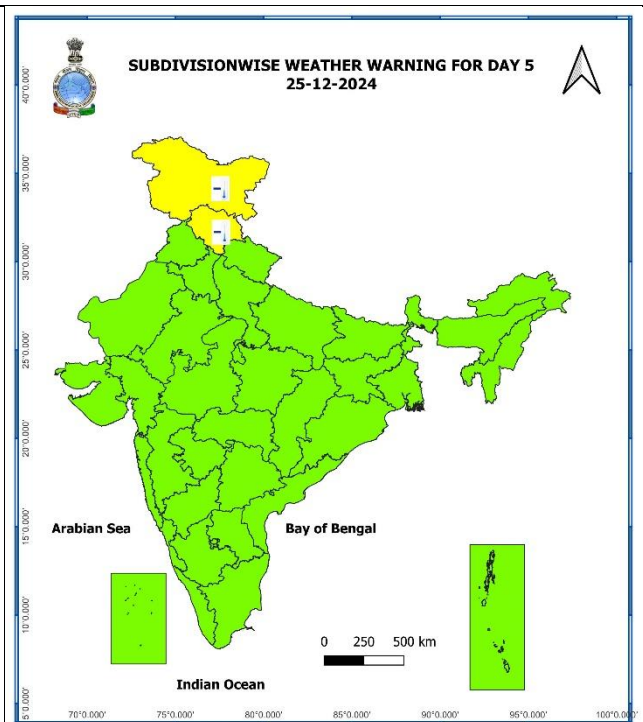
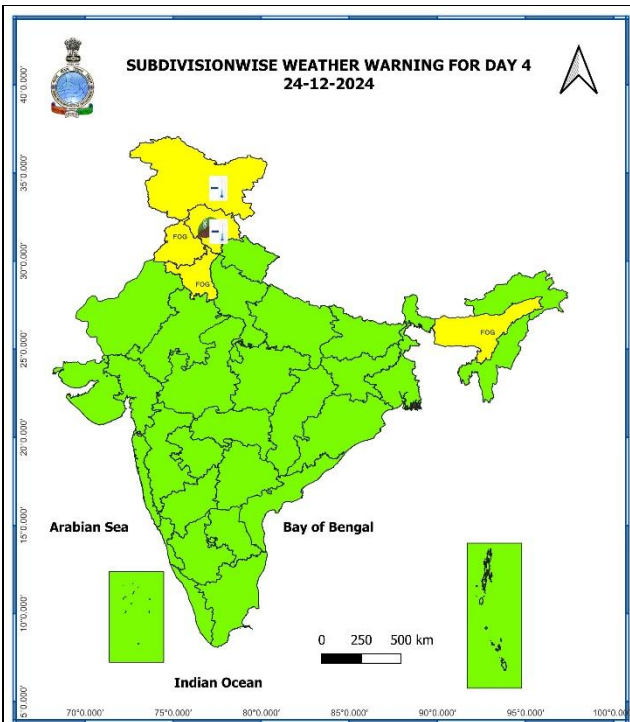
Spatial rainfall distribution: Isolated: <25%, A few: 26-50%, Many: 51-75%, Most: 76-100%

Rainfall amount (mm): Heavy rain: 64.5 – 115.5, Very heavy rain: 115.6 – 204.4, Extremely heavy rain: 204.5 or more.

Warning Graphics



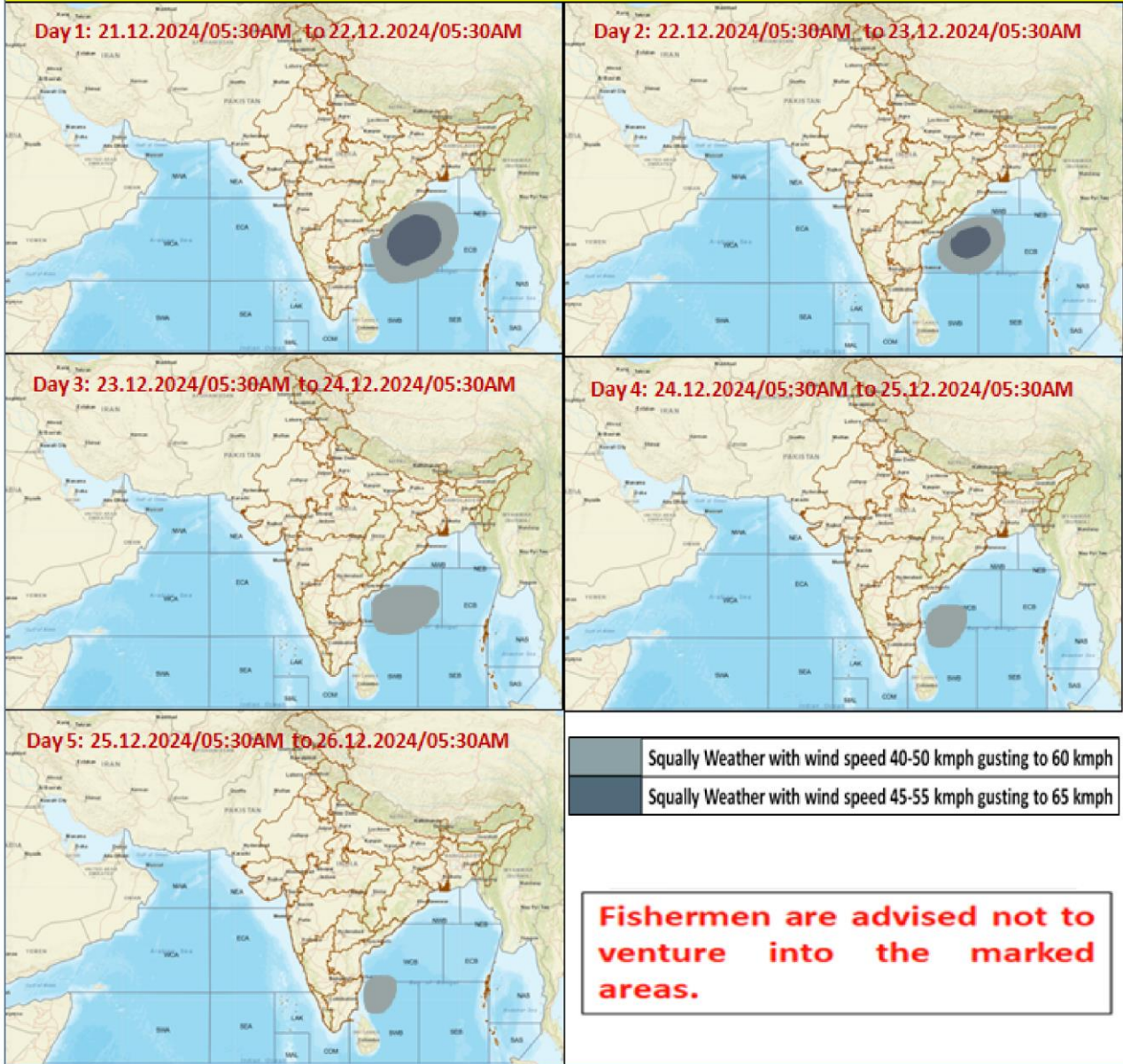
Spatial rainfall distribution: Isolated: <25%, A few: 26-50%, Many: 51-75%, Most: 76-100%
Rainfall amount (mm): Heavy rain: 64.5 – 115.5, Very heavy rain: 115.6 – 204.4, Extremely heavy rain: 204.5 or more.



- Action may be taken based on **ORANGE AND RED COLOUR** warnings.
- Vulnerable regions likely urban and hilly areas action may be initiated for heavy rainfall warning.
- As the lead period increases forecast accuracy decreases

Spatial rainfall distribution: Isolated: <25%, A few: 26-50%, Many: 51-75%, Most: 76-100%
Rainfall amount (mm): Heavy rain: 64.5 – 115.5, Very heavy rain: 115.6 – 204.4, Extremely heavy rain: 204.5 or more.

Fishermen Warning Graphics



Spatial rainfall distribution: Isolated: <25%, A few: 26-50%, Many: 51-75%, Most: 76-100%
Rainfall amount (mm): Heavy rain: 64.5 – 115.5, Very heavy rain: 115.6 – 204.4, Extremely heavy rain: 204.5 or more.