



**India Meteorological Department
(Ministry of Earth Sciences)**

NATIONAL BULLETIN NO.: 06 (BOB/08/2024)

TIME OF ISSUE: 2015 HOURS IST

DATED: 21.12.2024

FROM: INDIA METEOROLOGICAL DEPARTMENT (FAX NO. 24643965/24699216/24623220)

TO: CONTROL ROOM, NDM, MINISTRY OF HOME AFFAIRS (FAX.NO. 23093750)

CONTROL ROOM NDMA (FAX.NO. 26701729)

CABINET SECRETARIAT (FAX.NO.23012284, 23018638)

PS TO HON'BLE MINISTER FOR S & T AND EARTH SCIENCES (FAX NO.23316745)

SECRETARY, MOES (FAX NO. 24629777)

H.Q. (INTEGRATED DEFENCE STAFF AND CDS) (FAX NO. 23005137/23005147)

DIRECTOR GENERAL, DOORDARSHAN (23385843)

DIRECTOR GENERAL, AIR (23421105, 23421219)

PIB MOES (FAX NO. 23389042)

UNI (FAX NO. 23355841)

D.G. NATIONAL DISASTER RESPONSE FORCE (NDRF) (FAX NO. 26105912, 2436 3260)

DIRECTOR, PUNCTUALITY, INDIAN RAILWAYS (FAX NO. 23388503)

CHIEF SECRETARY, ANDAMAN & NICOBAR ISLANDS (FAX NO. 03192-232656)

CHIEF SECRETARY, TAMIL NADU (FAX NO. 044-25672304)

CHIEF SECRETARY, PUDUCHERRY (FAX NO. 0413-2334145)

CHIEF SECRETARY, ANDHRA PRADESH (FAX NO. 0863-2441029)

CHIEF SECRETARY, ODISHA (FAX NO. 0674-2536660)

CHIEF SECRETARY, WEST BENGAL (FAX NO. 033-22144328)

Sub: Depression over westcentral Bay of Bengal weakened into a Well Marked Low Pressure Area

The depression over westcentral Bay of Bengal moved east-northeastwards and weakened into a well marked low pressure area over the same region at 1730 hrs IST of 21st December 2024.

The well marked low pressure area is likely to persist over the region for next 24 hours and weaken gradually thereafter over the Sea.

Warnings:

(ii) Wind warning:

Squally weather with wind speed reaching 35-45 kmph gusting to 55 kmph is likely to prevail over westcentral & adjoining central parts of South Bay of Bengal and along & off Andhra Pradesh-north Tamil Nadu coasts till 22nd December and decrease gradually thereafter.

(iii) Sea Condition:

Rough sea condition is very likely to prevail over westcentral & adjoining central parts of South Bay of Bengal and along & off Andhra Pradesh coast-north Tamil Nadu coasts till 22nd December and improve gradually thereafter.

(iv) Fishermen Warning:

Fishermen are advised not to venture into westcentral & adjoining central parts of South Bay of Bengal and along & off Andhra Pradesh-north Tamil Nadu coasts on 21st & 22nd December.

This is last update in association with this system. However, regular weather bulletins will continue from National Weather Forecasting Centre and respective Regional Meteorological Centres and Meteorological Centres in association with the Well Marked Low Pressure Area over westcentral Bay of Bengal.

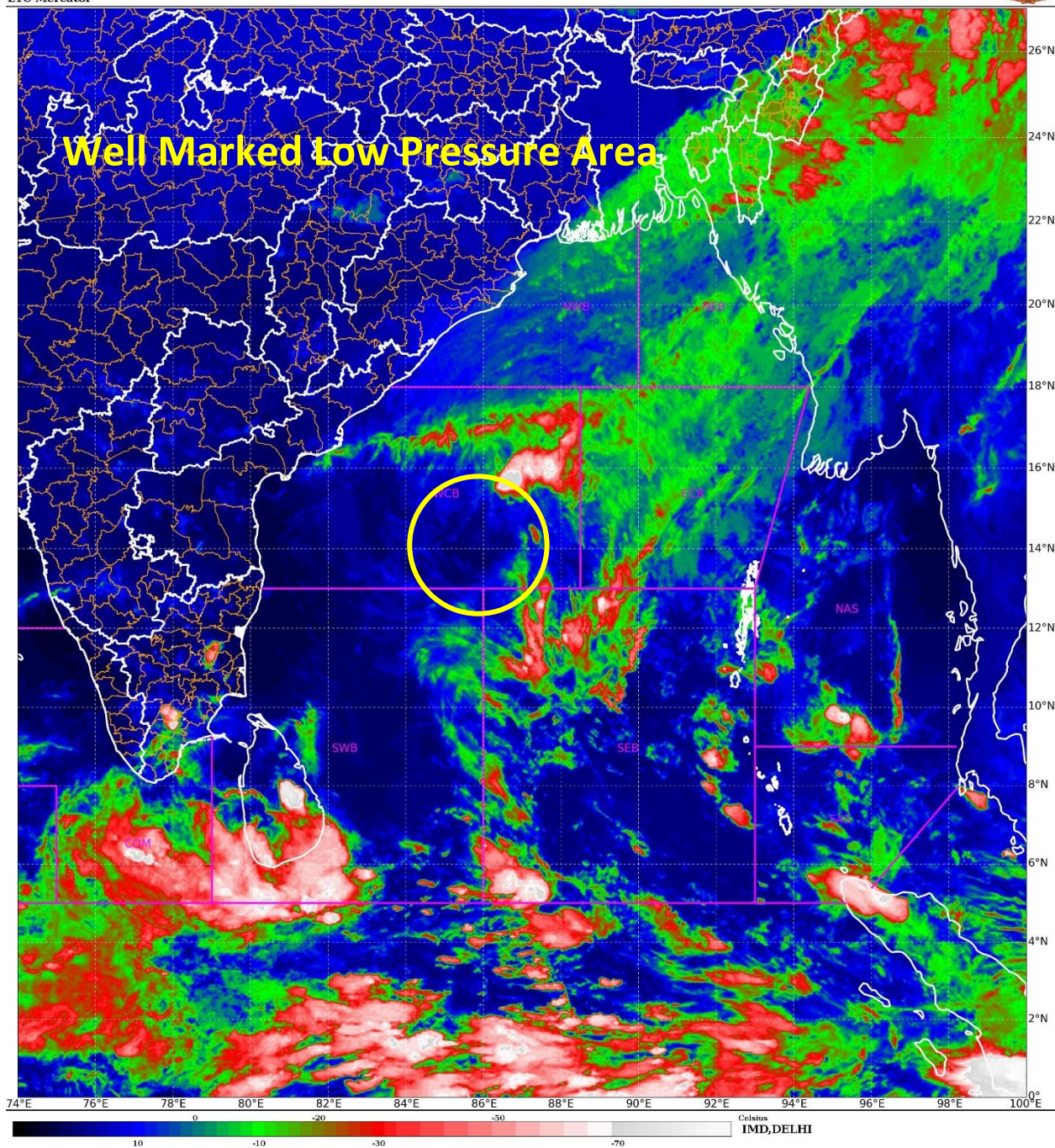
(Dr Ananda Kumar Das)

Scientist-F, RSMC, New Delhi

Copy to: CRS, Pune/ACWC Chennai /ACWC Kolkata /CWC Vishakhapatnam/CWC Bhubaneswar/MC Amaravati/MC Port Blair

Spatial rainfall distribution: Isolated: <25%, A few: 26-50%, Many: 51-75%, Most: 76-100%

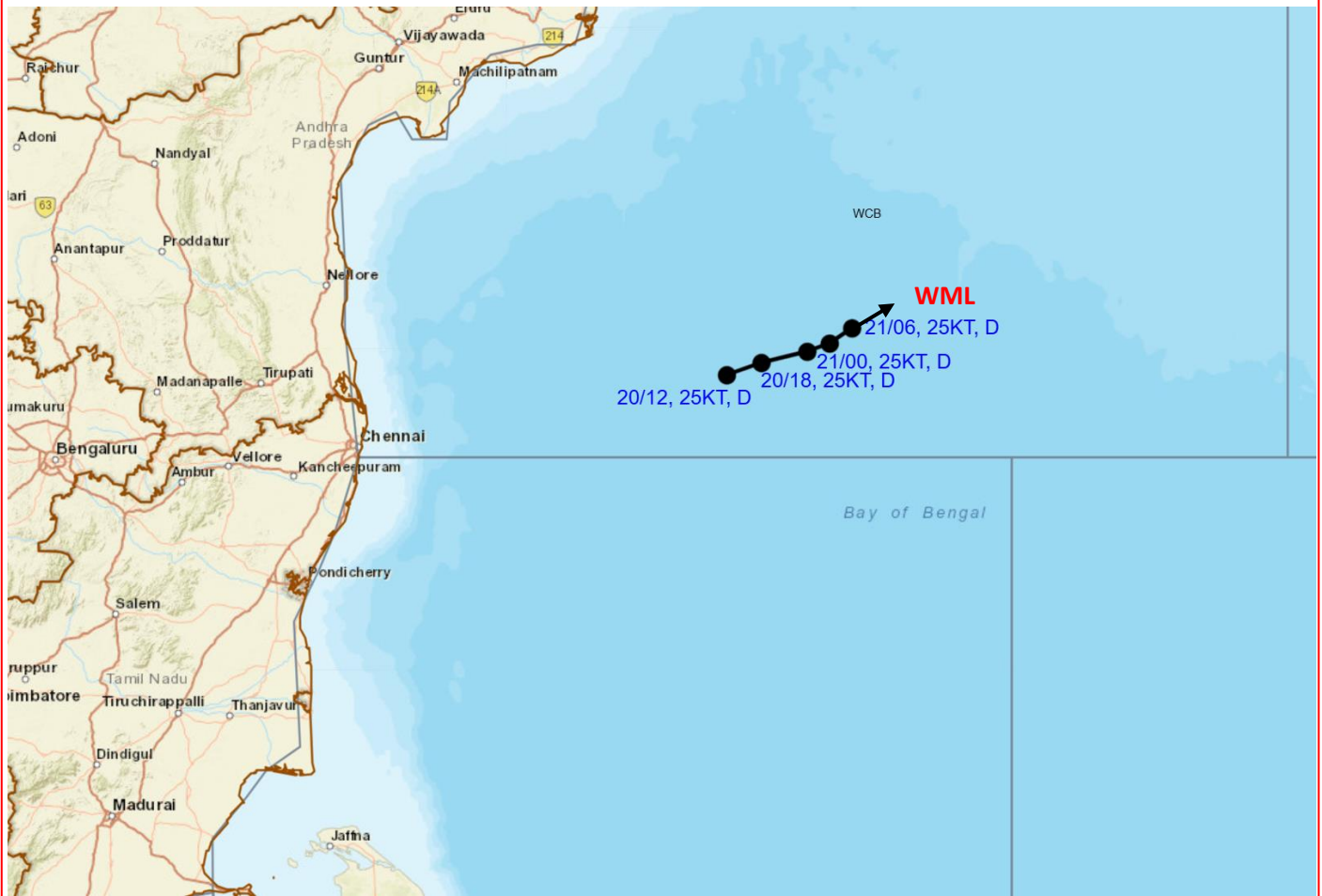
Rainfall amount (mm): Heavy rain: 64.5 – 115.5, Very heavy rain: 115.6 – 204.4, Extremely heavy rain: 204.5 or more.



Spatial rainfall distribution: Isolated: <25%, A few: 26-50%, Many: 51-75%, Most: 76-100%
Rainfall amount (mm): Heavy rain: 64.5 – 115.5, Very heavy rain: 115.6 – 204.4, Extremely heavy rain: 204.5 or more.



OBSERVED TRACK OF DEPRESSION OVER WESTCENTRAL BAY OF BENGAL DURING 20TH - 21ST DECEMBER, 2024.

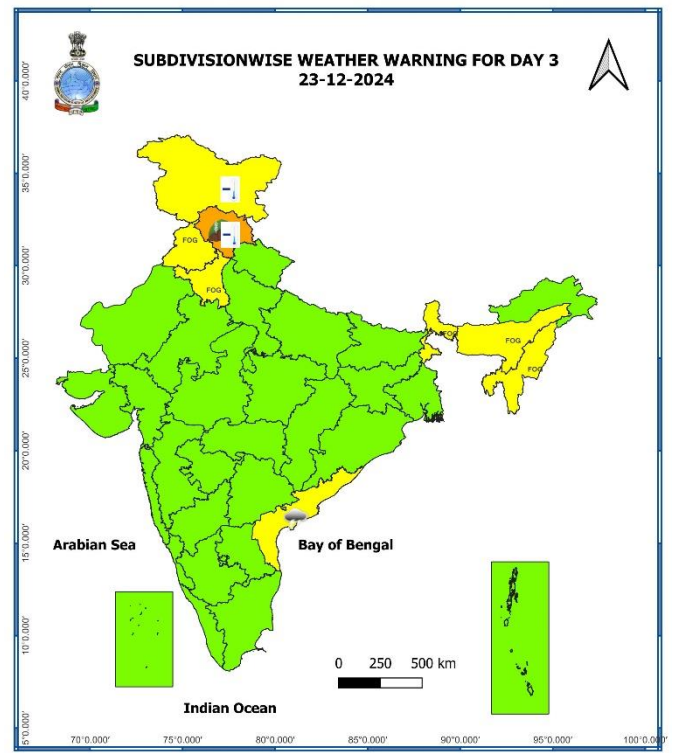
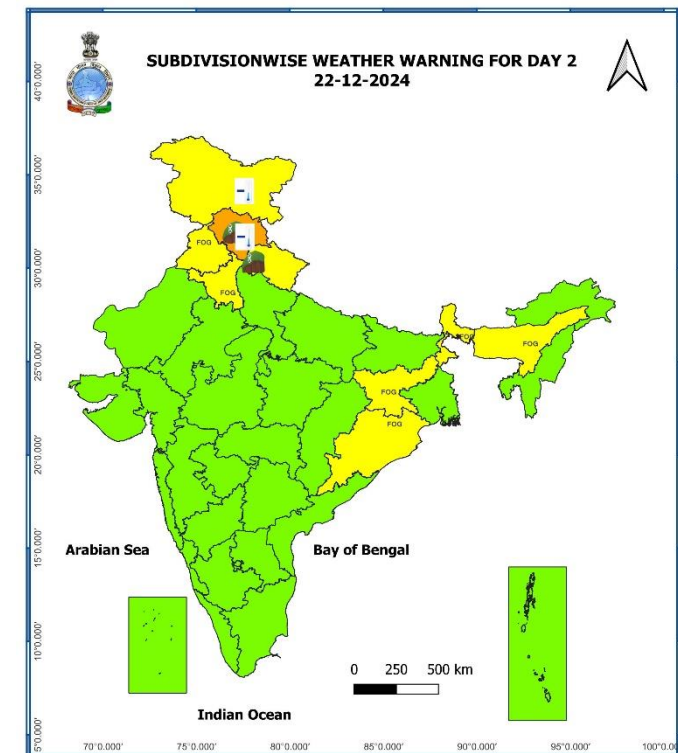
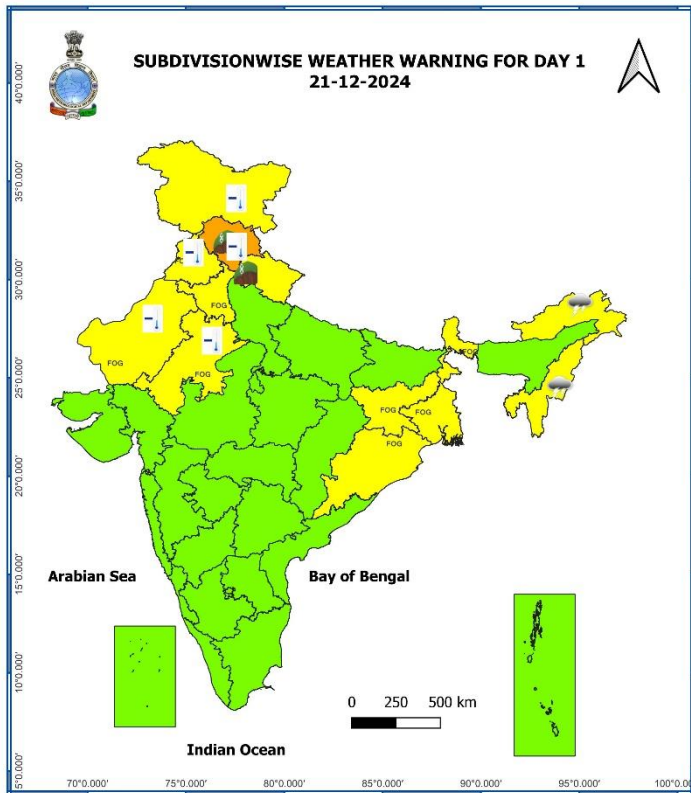


DATE/TIME : IN UTC
 IST : UTC + 0530
 KT : NAUTICAL MILE S/HOUR = 1.85 KM/HOUR
 LPA : LOW PRESSURE AREA
 WML : WELL MARKED LOW PRESSURE AREA
 D : DEPRESSION (17-27 KT)
 DD : DEEP DEPRESSION (28-33 KT)
 CS : CYCLONIC STORM (34-47 KT)
 SCS : SEVERE CYCLONIC STORM (48-63 KT)
 VSCS : VERY SEVERE CYCLONIC STORM (64-89 KT)
 ESCS : EXTREMELY SEVERE CYCLONIC STORM (90-119 KT)
 SuCS : SUPER CYCLONIC STORM (≥ 120 KT)

- LESS THAN 34 KT
- 34-47 KT
- ≥ 48 KT
- OBSERVED TRACK
- FORECAST TRACK
- CONE OF UNCERTAINTY

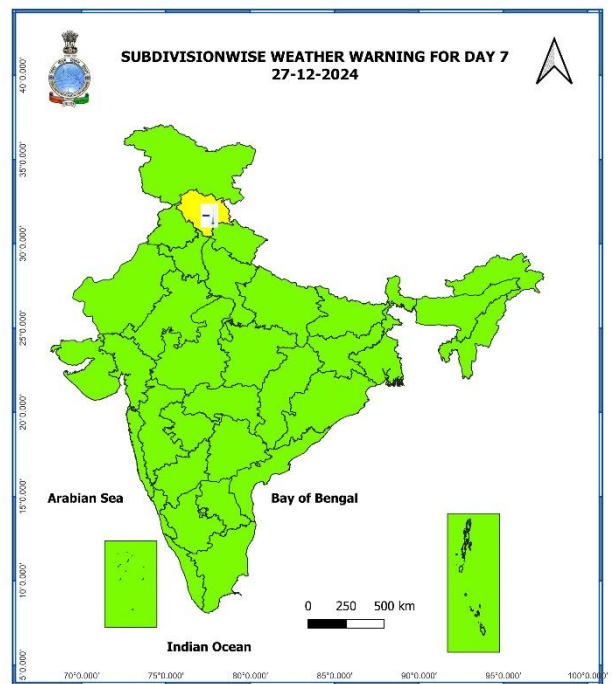
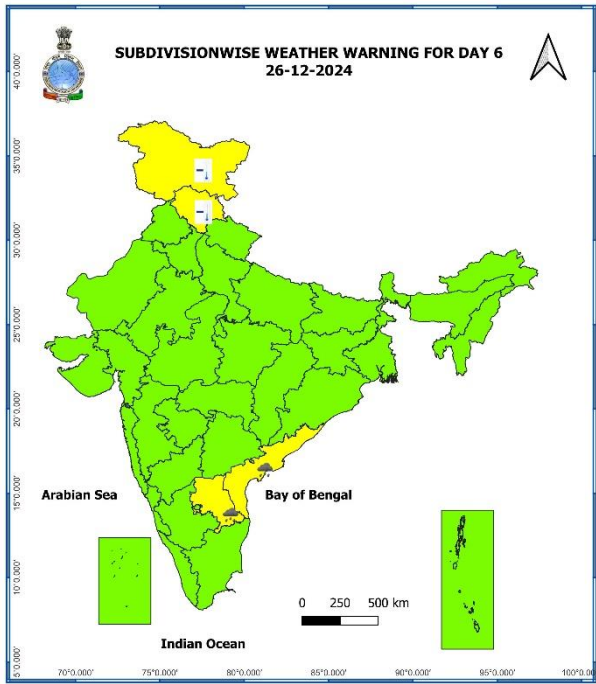
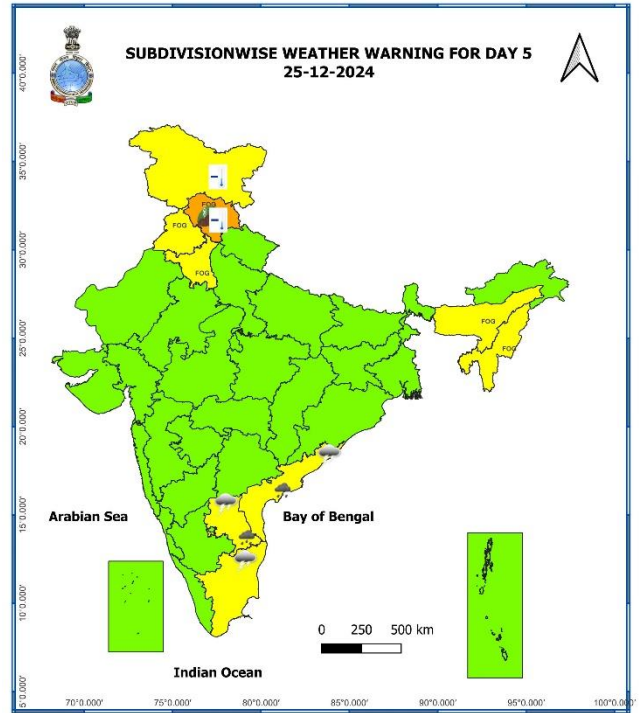
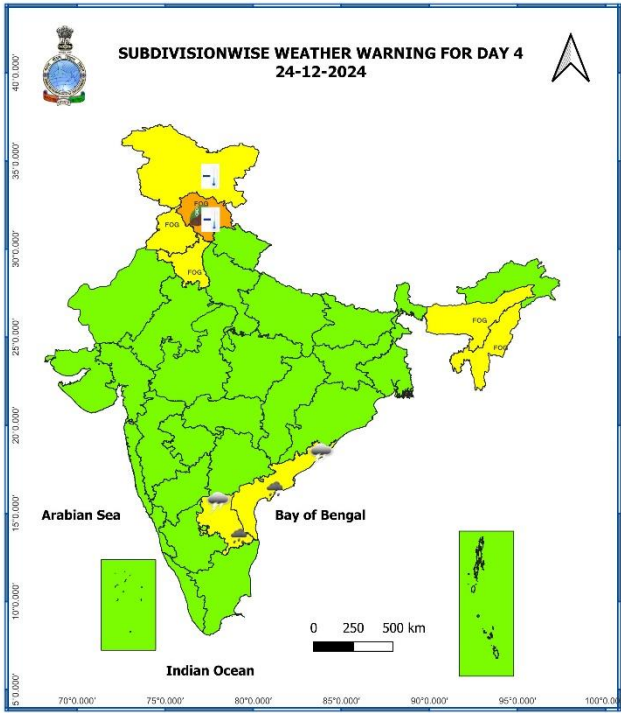
Spatial rainfall distribution: Isolated: <25%, A few: 26-50%, Many: 51-75%, Most: 76-100%
Rainfall amount (mm): Heavy rain: 64.5 – 115.5, Very heavy rain: 115.6 – 204.4, Extremely heavy rain: 204.5 or more.

Weather Warning Graphics



Spatial rainfall distribution: Isolated: <25%, A few: 26-50%, Many: 51-75%, Most: 76-100%
Rainfall amount (mm): Heavy rain: 64.5 – 115.5, Very heavy rain: 115.6 – 204.4, Extremely heavy rain: 204.5 or more.

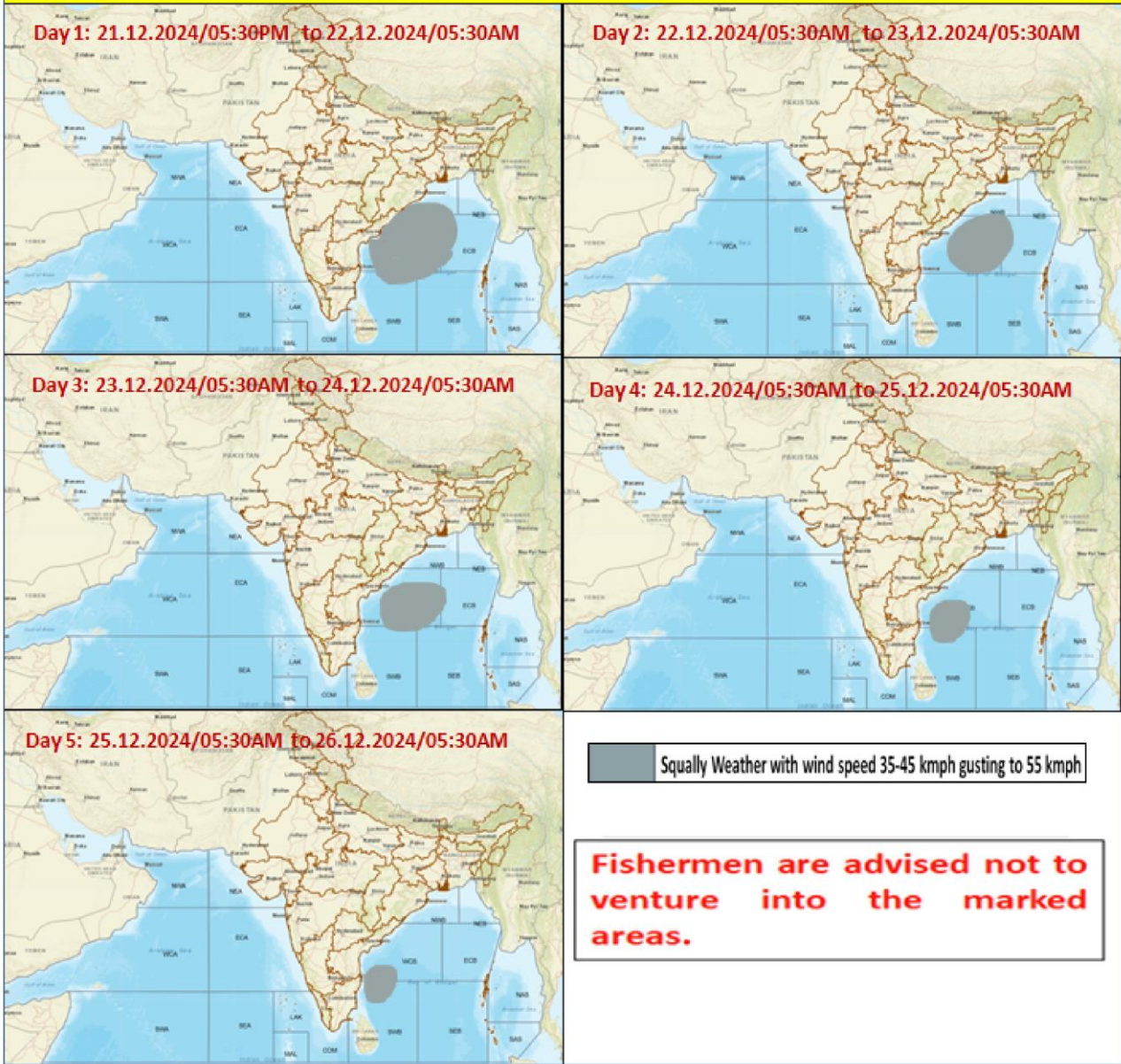
S



- Action may be taken based on **ORANGE AND RED COLOUR** warnings.
- Vulnerable regions likely urban and hilly areas action may be initiated for heavy rainfall warning.
- As the lead period increases forecast accuracy decreases

Spatial rainfall distribution: Isolated: <25%, A few: 26-50%, Many: 51-75%, Most: 76-100%
Rainfall amount (mm): Heavy rain: 64.5 – 115.5, Very heavy rain: 115.6 – 204.4, Extremely heavy rain: 204.5 or more.

Fishermen Warning Graphics



Spatial rainfall distribution: Isolated: <25%, A few: 26-50%, Many: 51-75%, Most: 76-100%
Rainfall amount (mm): Heavy rain: 64.5 – 115.5, Very heavy rain: 115.6 – 204.4, Extremely heavy rain: 204.5 or more.