

Tuesday, February 18, 2025
Time of Issue: 1400 hours IST
(MID-DAY)

ALL INDIA WEATHER SUMMARY AND FORECAST BULLETIN

Significant Weather Features:

Realised weather:

Temperature:

- ❖ During Past 24 hours, Day temperatures have risen by 1-3°C at many places over Uttarakhand, Jammu-Kashmir-Ladakh-Gilgit-Baltistan-Muzaffarabad, Punjab, Haryana, Rajasthan, Madhya Pradesh, Chhattisgarh, Odisha, Maharashtra, Karnataka and Kerala & Mahe. It has fallen by 1-3°C at some places over Tamilnadu Puducherry & Karaikal; at isolated places over Himachal Pradesh, Bihar, Assam & Meghalaya and Gangetic West Bengal.
- ❖ Day temperatures were **markedly above normal (5.1°C or more)** at isolated places over Jammu-Kashmir-Ladakh Gilgit-Baltistan-Muzaffarabad, Haryana-Chandigarh-Delhi; **appreciably above normal (3.1°C to 5.0°C)** at a few places over Vidarbha; at isolated places over Himachal Pradesh, West Rajasthan, Madhya Pradesh, East Uttar Pradesh, Chhattisgarh, Odisha, Marathwada, Madhya Maharashtra, Gujarat state, Gangetic West Bengal; **above normal (1.6°C to 3.0°C)** at isolated places over West Uttar Pradesh, Bihar, Rayalaseema, Coastal Andhra Pradesh & Yanam, Konkan & Goa, East Rajasthan, Uttarakhand.
- ❖ During past 24 hours, Night temperatures have fallen by 1-3°C over many parts of Odisha, East Madhya Pradesh, Tamilnadu Puducherry & Karaikal; at isolated places over Chhattisgarh, East Rajasthan, Jammu-Kashmir-Ladakh-Gilgit-Baltistan-Muzaffarabad and Telangana and risen by 1-3°C at a few places over Sub-Himalayan West Bengal & Sikkim, Assam & Meghalaya, Maharashtra, Gujarat State; by 4-6°C at many places over Himachal Pradesh.
- ❖ Night temperatures were **above normal (2.0°C to 5.0°C)** at many places over Northwest India and adjoining central India, Gangetic West Bengal, Madhya Maharashtra, Coastal Karnataka, Kerala & Mahe; at isolated places over Odisha, Chhattisgarh, Coastal Andhra Pradesh & Yanam, Telangana, Northeast India; These were **below normal (-1.6°C to -3.0°C)** at a few places over Andaman & Nicobar Islands; at isolated places over Tamil Nadu, Puducherry & Karaikal and near normal over rest parts of the country.

Weather Systems, Forecast and warning:

- ❖ A **cyclonic circulation** lies over northeast Assam in lower tropospheric levels. Under its influence,
 - ✓ Scattered to Fairly widespread light/moderate rainfall/snowfall activity likely over Arunachal Pradesh during 18th-24th February with **Heavy rainfall activity** likely on 18th & 19th February.
 - ✓ Isolated to scattered light rainfall activity likely over Assam & Meghalaya, Nagaland, Manipur, Mizoram & Tripura and Sub-Himalayan West Bengal & Sikkim during next 7 days.
 - ✓ Thunderstorm & lightning activity likely over Arunachal Pradesh, Assam & Meghalaya and Nagaland, Manipur, Mizoram & Tripura during 18th -20th February; with gusty winds (speed 30-40 kmph) over Assam & Meghalaya, Nagaland, Manipur, Mizoram & Tripura on 18th & 19th February.
- ❖ A Western disturbance as a **cyclonic circulation lies over north Pakistan & neighbourhood** and an **Induced cyclonic circulation** lies over southwest Rajasthan in lower tropospheric levels. Under their influence, isolated light rainfall/snowfall activity likely over Jammu-Kashmir-Ladakh-Gilgit-Baltistan-Muzaffarabad on 18th February.
- ❖ Another **Western Disturbance** is seen as a trough in middle tropospheric level roughly along Long. 55°E to the north of Lat. 32°N.; under its influence **scattered to fairly widespread light to moderate rainfall/snowfall accompanied with thunderstorm & lightning over Jammu-Kashmir-Ladakh-Gilgit-Baltistan-Muzaffarabad, Himachal Pradesh & Uttarakhand on 19th & 20th and isolated light rainfall/snowfall during 21st -23rd February.**
- ❖ **Heavy rainfall/snowfall** at isolated places likely over Jammu-Kashmir-Ladakh-Gilgit-Baltistan-Muzaffarabad and Himachal Pradesh on 20th February.
- ✓ **Isolated to Scattered light to moderate rainfall accompanied with thunderstorm & lightning** likely over East Rajasthan on 19th; Punjab, Haryana on 19th & 20th; West Uttar Pradesh on 20th; with gusty winds (speed 30-40 kmph) over West Rajasthan on 19th and isolated light rainfall over Central India on 21st & 22nd February.

Temperature & Fog Forecast:

Forecast of temperature:

Minimum Temperature:

- ❖ No significant change in Minimum temperatures likely over Northwest India during next 24 hours and gradual rise by about 2-3°C during subsequent 48 hours and gradual fall by 2-3°C during subsequent 2 days.
- ❖ No significant change in minimum temperature likely over rest parts of India during next 4-5 days.

Maximum temperature:

- ❖ No significant change in Maximum temperatures likely over Northwest India during next 2 days and gradual fall by about 2°C during subsequent 24 hours and gradual rise by 2-3°C during subsequent 2 days.
- ❖ No significant change in maximum temperature likely over rest parts of India during next 4-5 days.

Dense Fog Warnings:

- ❖ **Dense fog conditions** very likely to continue to prevail during early morning hours in isolated pockets of Sub-Himalayan West Bengal & Sikkim till 19th February.

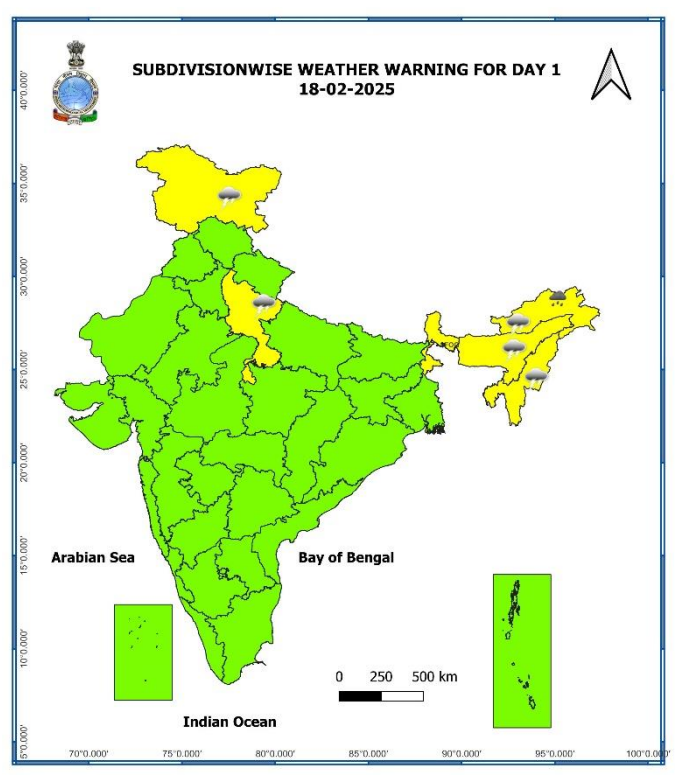
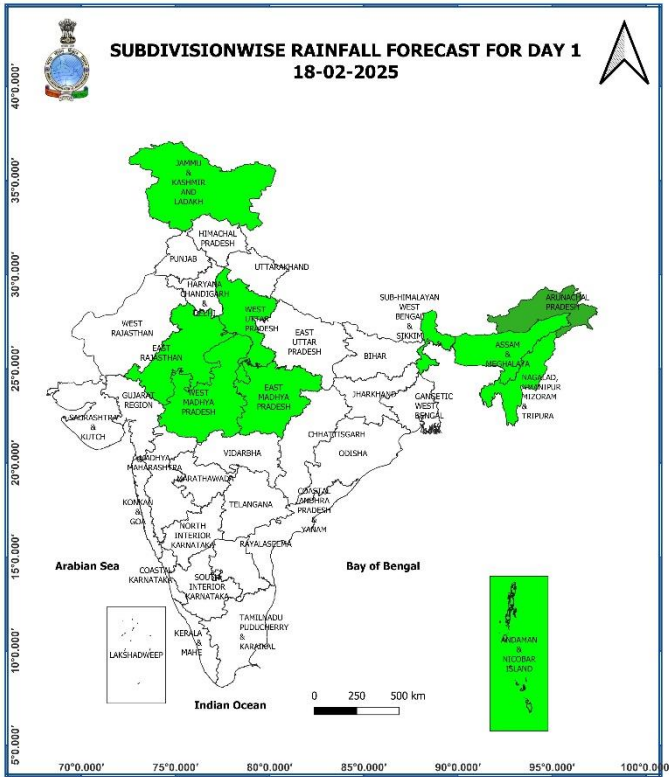
Main Weather Observations:

- ❖ **Rainfall/Snowfall distribution** (from 0830 hours IST of yesterday to 0830 hours IST of today): **at a few places over** Arunachal Pradesh; **at isolated places over** Uttarakhand, Assam & Meghalaya, Nagaland, Manipur, Mizoram & Tripura, Sub-Himalayan West Bengal & Sikkim.
- ❖ **Significant amount of rainfall** (from 0830 hours IST of yesterday to 0830 hours IST of today): (in cm): **Arunachal Pradesh:** Tuting (dist Upper Siang) 2, Tuting_ Aws (dist Upper Siang) 2, Tawang_ Aws (dist Tawang) 1; **Assam & Meghalaya:** Dhemaji (dist Dhemaji) 2; **Nagaland, Manipur, Mizoram & Tripura:** Mangkolemba (dist Mokokchung) 1, Mokokchang (dist Mokokchung) 1; **Sub-Himalayan West Bengal & Sikkim:** Sankalan (dist Mangan) 1, Singhik (dist Mangan) 1
- ❖ **Fog reported (at 0830 hours IST of today):** **Dense to very dense fog conditions** reported in isolated pockets of Meghalaya and **Dense fog** in isolated pockets of Gangetic West Bengal and Punjab.
- ❖ **Visibility reported (at 0830 hours IST of today) (≤ 500 m):** **Meghalaya:** Barapani 30; **Gangetic West Bengal:** Diamond Harbour 150; **Punjab:** Amritsar 150.
- ❖ **Minimum Temperature Departures (as on 18-02-2025):** Minimum temperatures are **markedly above normal (5.1°C or more)** at a few places over West Rajasthan; at isolated places over Gujarat state; **appreciably above normal (3.1°C to 5.0°C)** at isolated places over Haryana-Chandigarh-Delhi, East Rajasthan, Madhya Pradesh, Assam & Meghalaya; **above normal (1.6°C to 3.0°C)** at a few places over East Uttar Pradesh, Gangetic West Bengal, Madhya Maharashtra, Coastal Karnataka, Kerala & Mahe; at isolated places over Odisha, Chhattisgarh, Coastal Andhra Pradesh & Yanam, Telangana, Nagaland, Manipur, Mizoram & Tripura. These are **below normal (-1.6°C to -3.0°C)** at a few places over Andaman & Nicobar Islands; at isolated places over Tamil Nadu, Puducherry & Karaikal and near normal over rest parts of the country (Fig. 4). Today, the **lowest minimum temperature** of 7.8°C is reported at **Pathankot (Punjab)** over the plains of the country.
- ❖ **Maximum Temperature Departures (as on 17-02-2025):** Maximum temperatures were **markedly above normal (5.1°C or more)** at isolated places over Jammu-Kashmir-Ladakh-Gilgit-Baltistan-Muzaffarabad, Haryana-Chandigarh-Delhi; **appreciably above normal (3.1°C to 5.0°C)** at a few places over Vidarbha; at isolated places over Himachal Pradesh, West Rajasthan, Madhya Pradesh, East Uttar Pradesh, Chhattisgarh, Odisha, Marathwada, Madhya Maharashtra, Gujarat state, Gangetic West Bengal; **above normal (1.6°C to 3.0°C)** at isolated places over West Uttar Pradesh, Bihar, Rayalaseema, Coastal Andhra Pradesh & Yanam, Konkan & Goa, East Rajasthan, Uttarakhand. These were **below normal (-1.6°C to -3.0°C)** at isolated places over Tamil Nadu, Puducherry & Karaikal, Assam & Meghalaya and near normal over rest parts of the country (Fig. 2). Yesterday, the highest **maximum temperature** of 38.0°C was reported at **Bramhapuri (Vidarbha)** over the country.

Meteorological Analysis (Based on 0830 hours IST)

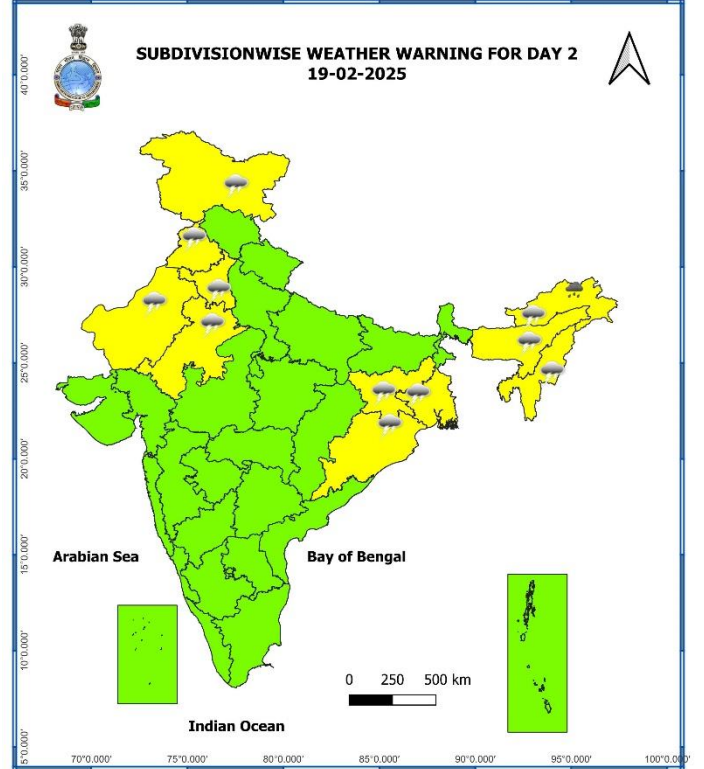
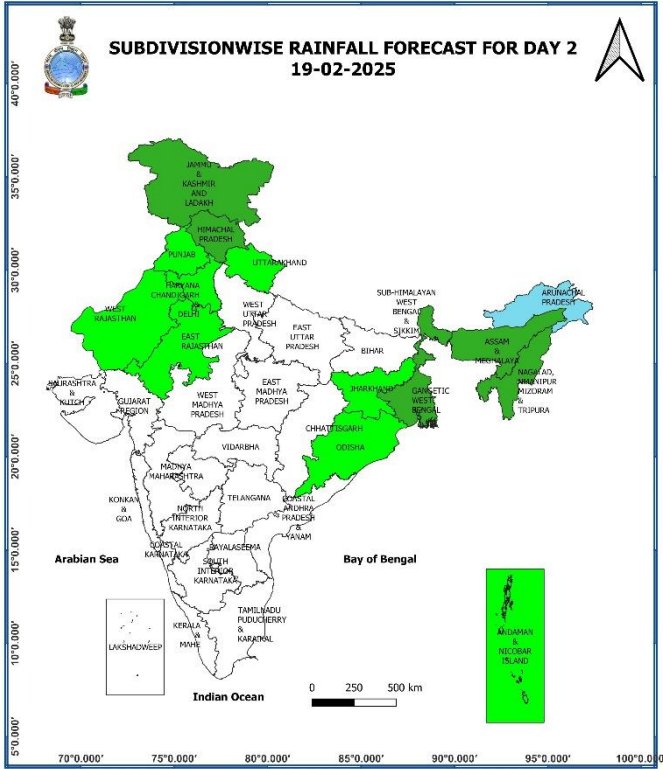
- ❖ The **Western Disturbance** as a trough in middle tropospheric westerlies with its axis at 5.8 km above mean sea level roughly along Long. 67°E to the north of Lat. 33°N now seen as a cyclonic circulation over north Pakistan & neighbourhood at 3.1 km above mean sea level.
- ❖ The **Induced cyclonic circulation** over West Rajasthan & neighbourhood now lies over southwest Rajasthan & neighbourhood and extends upto 1.5 km above mean sea level.
- ❖ A fresh **Western Disturbance** is seen as a trough in middle tropospheric level with its axis at 5.8 km above mean sea level roughly along Long. 55°E to the north of Lat. 32°N.
- ❖ The **cyclonic circulation** over northeast Assam & neighbourhood persists and now seen at 1.5 km above mean sea level.
- ❖ The cyclonic circulation over southwest Madhya Pradesh & neighbourhood at 0.9 km above mean sea level has become less marked.

Weather Forecast & Warnings for next 7 days (Upto 0830 hours IST of 25th February, 2025)



18th February (Day 1):

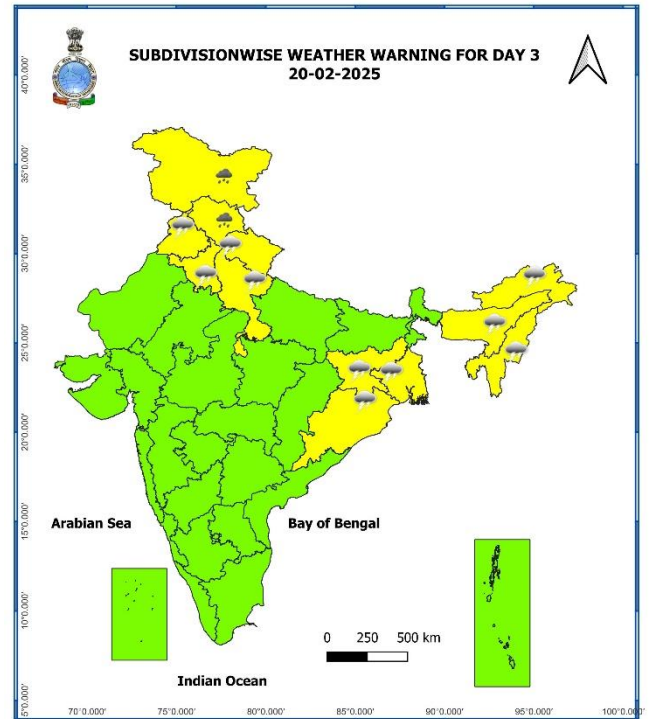
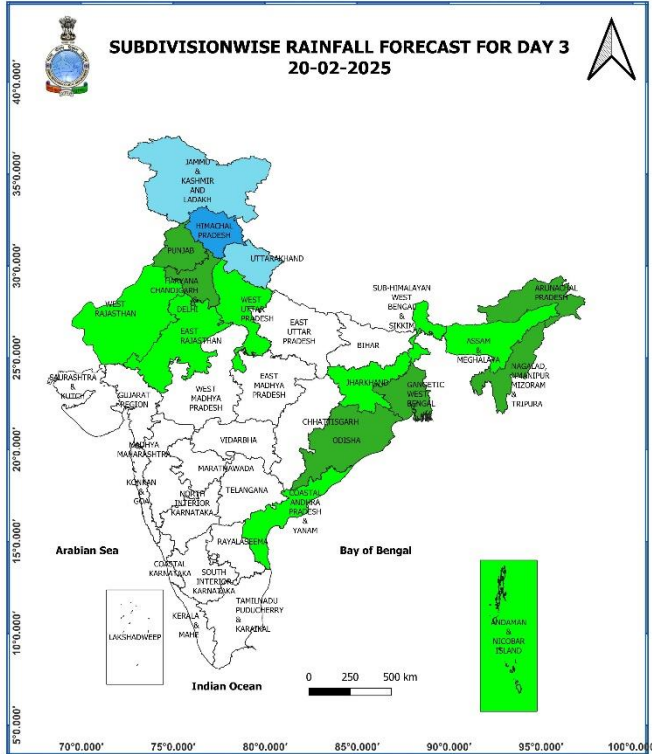
- ❖ **Heavy rainfall/snowfall (≥7 cm)** very likely at isolated places over Arunachal Pradesh.
- ❖ **Thunderstorm accompanied with gusty winds (30-40 kmph) & lightning** very likely at isolated places over Assam & Meghalaya and Nagaland, Manipur, Mizoram & Tripura; **with lightning** at isolated places over Jammu-Kashmir-Ladakh-Gilgit-Baltistan-Muzaffarabad, West Uttar Pradesh and Arunachal Pradesh.
- ❖ Dense fog conditions very likely in isolated pockets of **Sub-Himalayan West Bengal & Sikkim**.



19th February (Day 2):

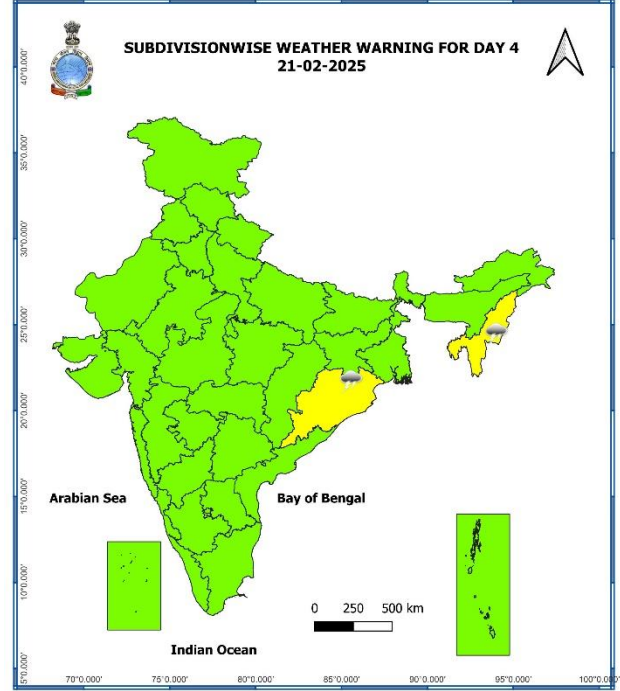
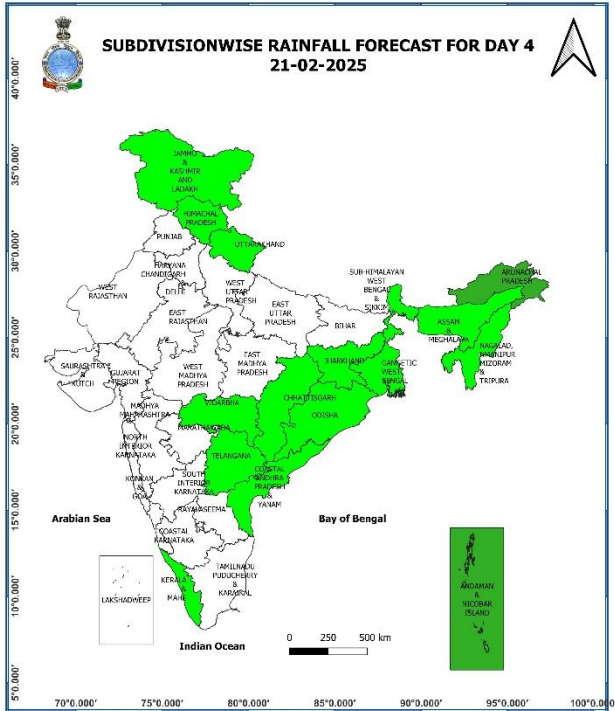
- ❖ **Heavy rainfall/snowfall (≥ 7 cm)** very likely at isolated places over Arunachal Pradesh.
- ❖ **Thunderstorm accompanied with gusty winds (30-40 kmph) & lightning** very likely at isolated places over West Rajasthan, Assam & Meghalaya and Nagaland, Manipur, Mizoram & Tripura; **with lightning** at isolated places over Jammu-Kashmir-Ladakh-Gilgit-Baltistan-Muzaffarabad, Punjab, Haryana-Chandigarh-Delhi, East Rajasthan, Gangetic West Bengal, Jharkhand, Odisha and Arunachal Pradesh.

* Red colour warning does not mean "Red Alert", Red colour warning means "Take Action".
Forecast and Warning for any day is valid from 0830 hours IST of day till 0830 hours IST of next day.
For more details, kindly visit <https://mausam.imd.gov.in> or contact: 011-2434-4599
(Service to the Nation since 1875)



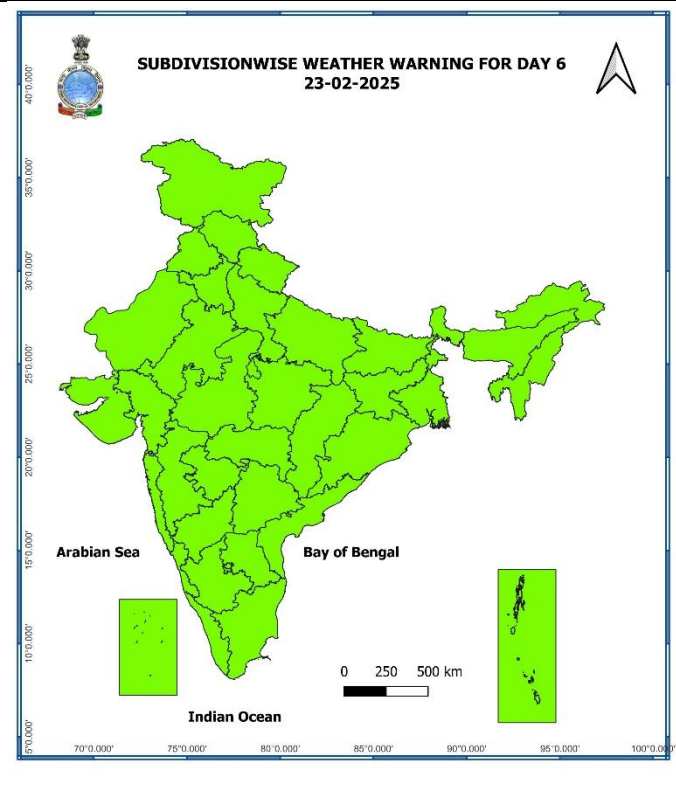
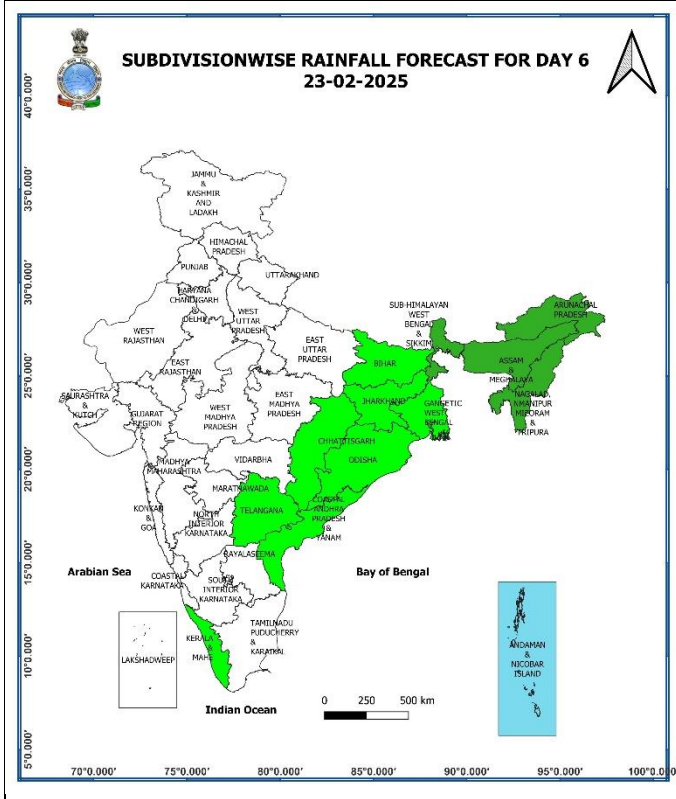
20th February (Day 3):

- ❖ **Heavy rainfall/snowfall (≥ 7 cm)** very likely at isolated places over Jammu-Kashmir-Ladakh-Gilgit-Baltistan-Muzaffarabad and Himachal Pradesh.
- ❖ **Thunderstorm accompanied with lightning** very likely at isolated places over Uttarakhand, Punjab, Haryana-Chandigarh-Delhi, West Uttar Pradesh, Gangetic West Bengal, Jharkhand, Odisha, Arunachal Pradesh, Assam & Meghalaya and Nagaland, Manipur, Mizoram & Tripura.



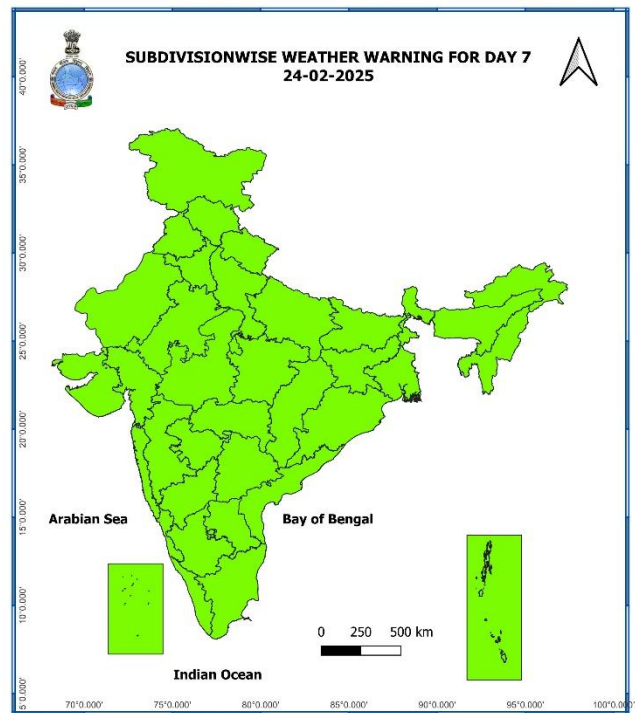
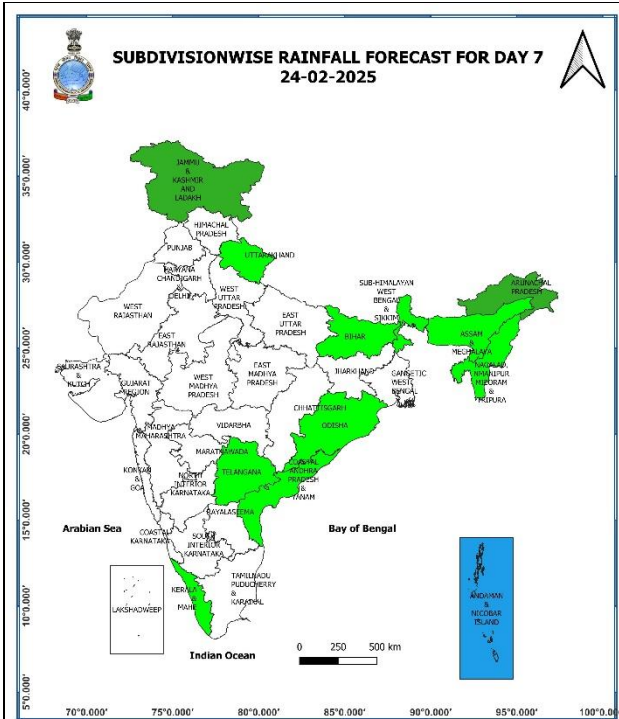
21st February (Day 4):

- ❖ **Thunderstorm accompanied with lightning** likely at isolated places over Odisha and Nagaland, Manipur, Mizoram & Tripura.



23rd February (Day 6):

❖ **No Weather Warning.**



24th February (Day 7):

❖ **No Weather Warning.**

Weather Outlook for subsequent 3 days (During 25th February- 27th February, 2025)

- ❖ **Scattered to fairly widespread rainfall/snowfall** likely over Western Himalayan region.
- ❖ **Isolated to scattered rainfall** likely over plains of Northwest, adjoining Central, East and Northeast India, Tamil Nadu, Puducherry & Karaikal, Kerala & Mahe and Andaman & Nicobar Islands.

Action may be taken based on **ORANGE AND RED COLOUR** warnings.

- **Vulnerable regions likely urban and hilly areas** action may be initiated for heavy rainfall warning.
- **As the lead period increases forecast accuracy decreases.**

Fig. 1: Maximum Temperatures

Fig. 2: Departure of Maximum Temperatures

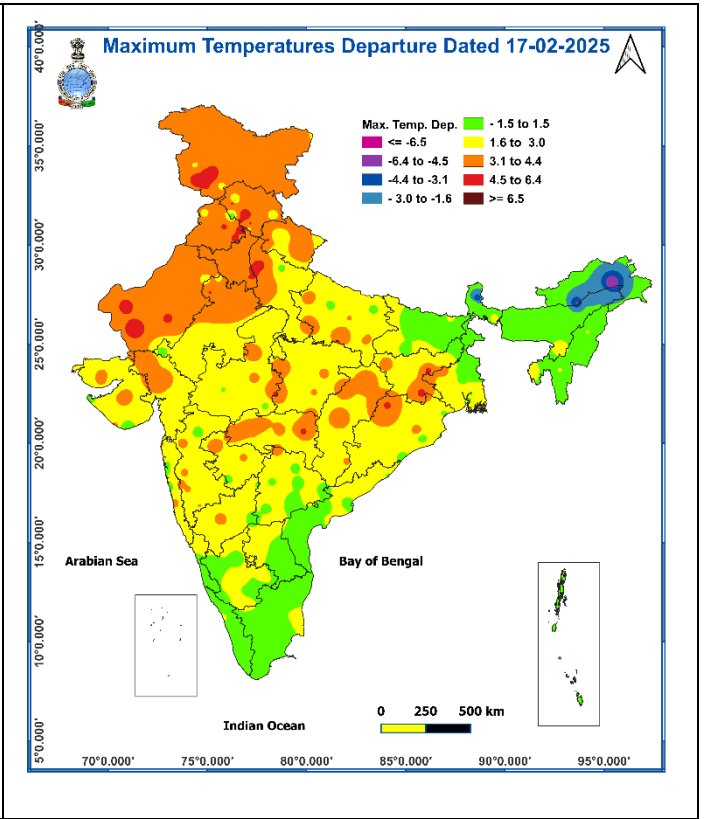
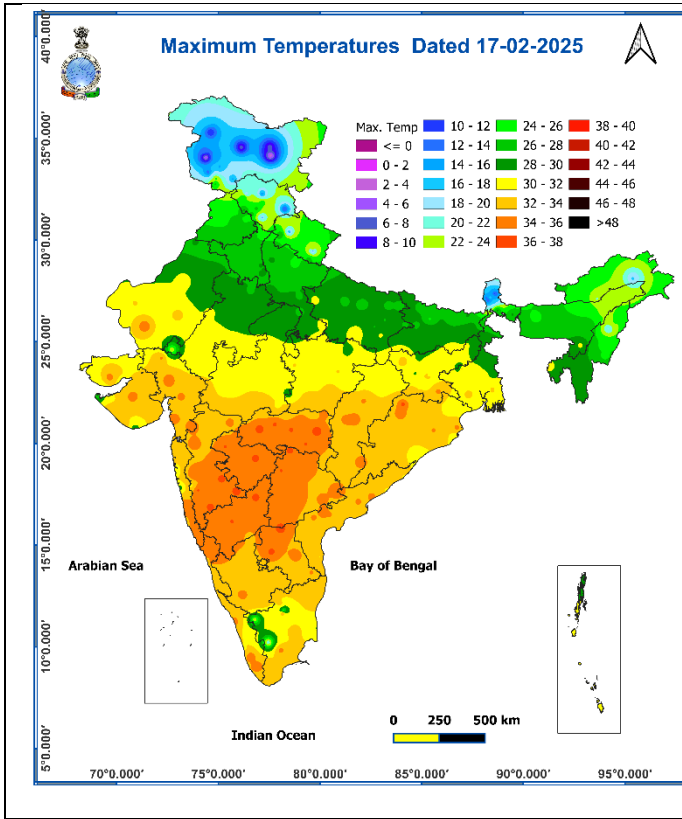
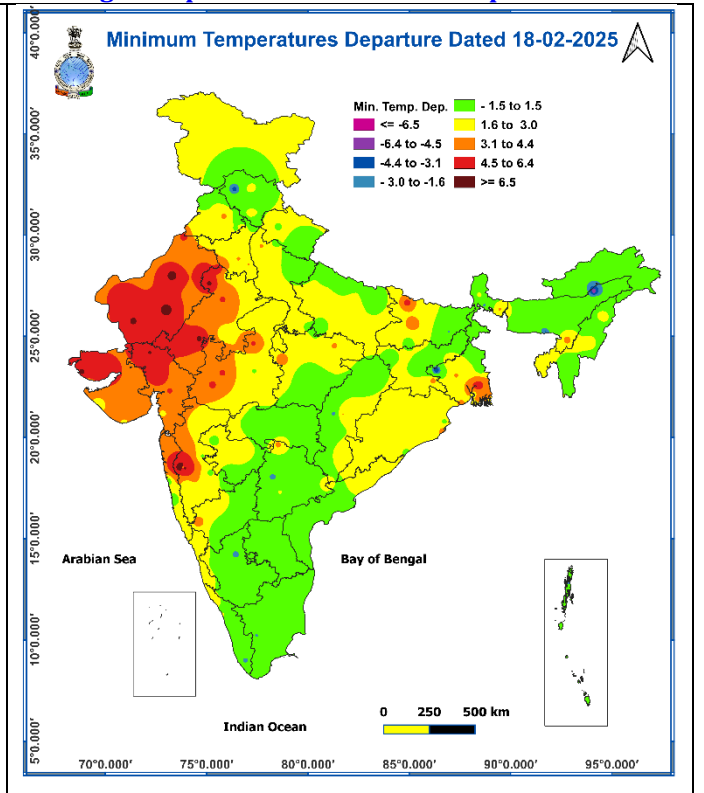
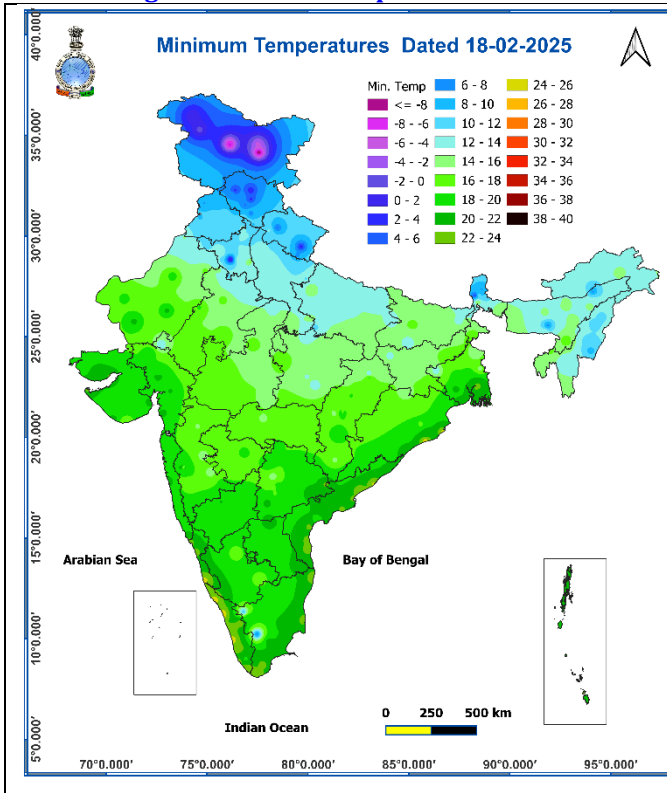


Fig. 3: Minimum Temperatures

Fig. 4: Departure of Minimum Temperatures



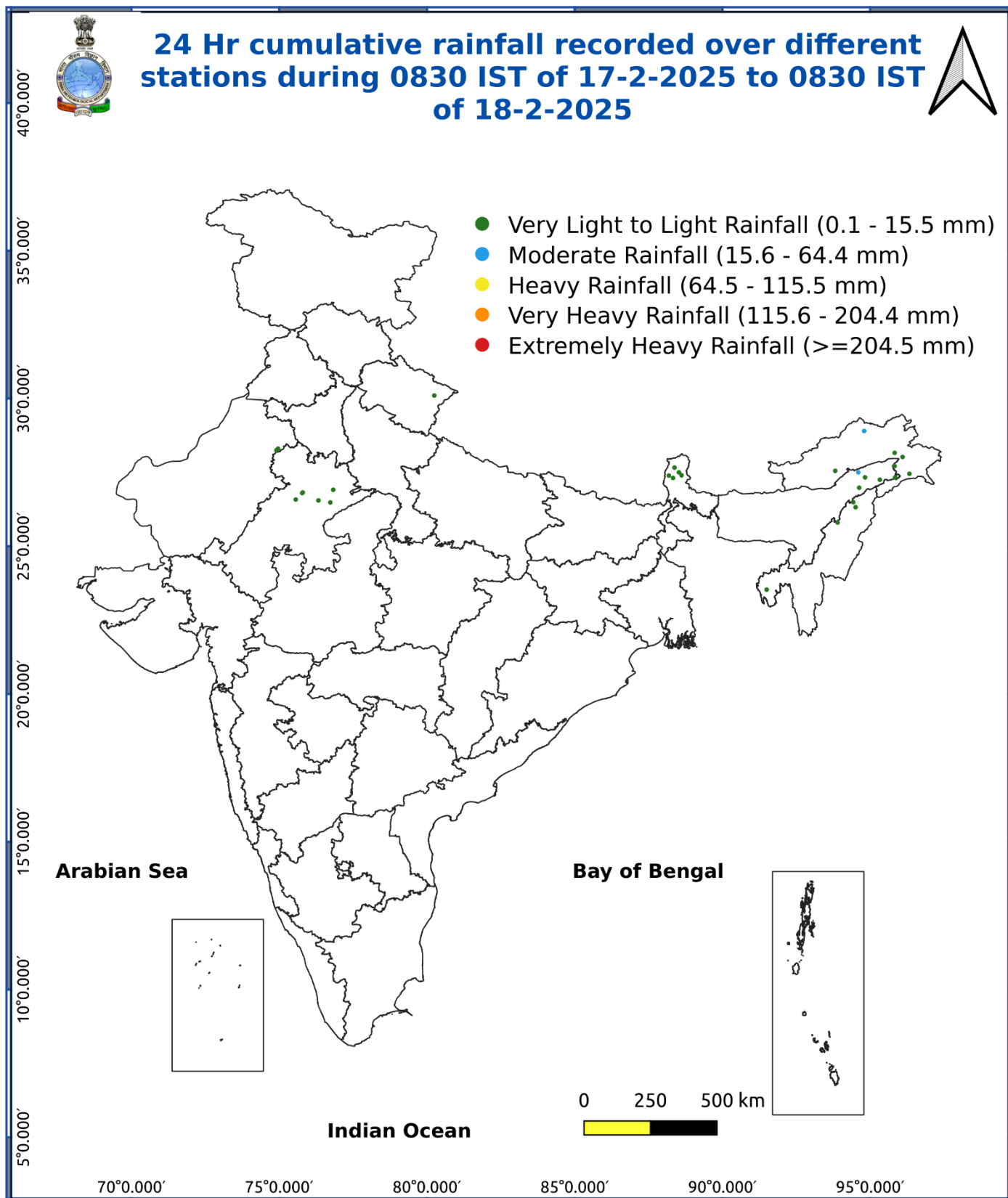
Agromet advisories for likely impact of Heavy Rainfall

- In **Arunachal Pradesh**, postpone rice harvesting during rainfall periods and shift the already harvested produce to well-covered storage facilities to prevent damage. Provide extensive drainage in the fields of rice, mustard, other standing crops, vegetables and horticultural crops.
- Make provision for draining out excess water from the fields of wheat, mustard, pulses, other standing crops, vegetables and horticultural crops in **Jammu & Kashmir** and **Himachal Pradesh** to avoid water stagnation. Harvest the mature crops and keep the harvested produce in safer places.
- Provide mechanical support to horticultural crops and staking to vegetables.

Livestock

- Keep the animals inside the shed during heavy rainfall and provide them with balanced feed. Store feed and fodder in a safe place to prevent spoilage.

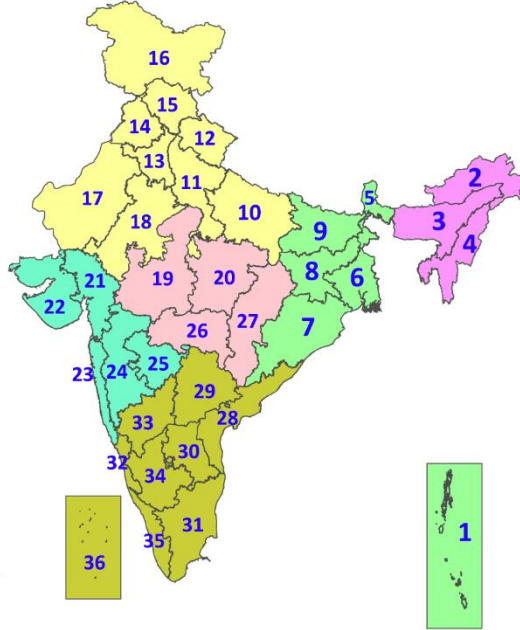
Fig. 5: Accumulated Rainfall (mm) during past 24 hours



* Red colour warning does not mean "Red Alert", Red colour warning means "Take Action".
Forecast and Warning for any day is valid from 0830 hours IST of day till 0830 hours IST of next day.
For more details, kindly visit <https://mausam.imd.gov.in> or contact: 011-2434-4599
(Service to the Nation since 1875)

LEGENDS

1. अंडमान और निकोबार द्वीपसमूह
2. अरुणाचल प्रदेश
3. असम और मेघालय
4. नागालैंड, मणिपुर, मिजोरम और त्रिपुरा
5. उप-हिमालयी पश्चिम बंगाल और सिक्किम
6. गंगीय पश्चिम बंगाल
7. ओडिशा
8. झारखंड
9. बिहार
10. पूर्वी उत्तर प्रदेश
11. पश्चिम उत्तर प्रदेश
12. उत्तराखंड
13. हरियाणा, चंडीगढ़ और दिल्ली
14. पंजाब
15. हिमाचल प्रदेश
16. जम्मू और कश्मीर और लद्दाख
17. पश्चिम राजस्थान
18. पूर्वी राजस्थान
19. पश्चिम मध्य प्रदेश
20. पूर्वी मध्य प्रदेश
21. गुजरात
22. सौराष्ट्र
23. कोंकण और गोवा
24. मध्य महाराष्ट्र
25. मराठवाड़ा
26. विदर्भ
27. छत्तीसगढ़
28. तटीय आंध्र प्रदेश और यनम
29. तेलंगाना
30. रायलसीमा
31. तमिलनाडु, पुडुचेरी और कराईकल
32. तटीय कर्नाटक
33. आंतरिक उत्तरी कर्नाटक
34. आंतरिक दक्षिणी कर्नाटक
35. केरल और माहे
36. लक्षद्वीप



1. Andaman & Nicobar Islands
2. Arunachal Pradesh
3. Assam & Meghalaya
4. Nagaland, Manipur, Mizoram & Tripura
5. Sub-Himalayan West Bengal & Sikkim
6. Gangetic West Bengal
7. Odisha
8. Jharkhand
9. Bihar
10. East Uttar Pradesh
11. West Uttar Pradesh
12. Uttarakhand
13. Haryana, Chandigarh & Delhi
14. Punjab
15. Himachal Pradesh
16. Jammu & Kashmir and Ladakh
17. West Rajasthan
18. East Rajasthan
19. West Madhya Pradesh
20. East Madhya Pradesh
21. Gujarat
22. Saurashtra
23. Konkan & Goa
24. Madhya Maharashtra
25. Marathwada
26. Vidarbha
27. Chhattisgarh
28. Coastal Andhra Pradesh & Yanam
29. Telangana
30. Rayalaseema
31. Tamilnadu, Puducherry & Karaikal
32. Coastal Karnataka
33. North Interior Karnataka
34. South Interior Karnataka
35. Kerala & Mahe
36. Lakshadweep

SPATIAL DISTRIBUTION (% of Stations reporting)

% Stations	Category	% Stations	Category
76-100	Widespread (WS/Most Places)	26-50	Scattered (SCT/A Few Places)
51-75	Fairly Widespread (FWS/Many Places)	1-25	Isolated (ISOL)

- | | | |
|----------------------|----------------------|--------------|
| Fog | Heavy Snow | Cold Wave |
| Heavy Rain | Dust Storm | Cold Day |
| Very Heavy Rain | Heat Wave | Ground Frost |
| Extremely Heavy Rain | Warm Night | |
| Thunder & Lightning | Hot Day | |
| Hailstorm | Hot & Humid | |
| Dust Raising Winds | Strong Surface Winds | |

COLOUR CODED WARNING

No Warning (No Action)
Watch (Be Aware)
Alert (Be Prepared To Take Action)
Warning (Take Action)

Probabilistic Forecast

Terms	Probability of Occurrence (%)
Unlikely	< 25
Likely	25 - 50
Very Likely	50 - 75
Most Likely	> 75

DEFINITION/CRITERIA

Rain/ Snow *	<p>Heavy: 64.5 to 115.5 mm/cm *</p> <p>Very Heavy: 115.6 to 204.4 mm/cm*</p> <p>Extremely Heavy: > 204.4 mm/cm *</p>
Heat Wave	<p>When maximum temperature of a station reaches $\geq 40^\circ\text{C}$ for plains and $\geq 30^\circ\text{C}$ for hilly regions</p> <p>(a) Based on Departure from normal</p> <p>Heat Wave: Maximum Temperature Departure from normal 4.5°C to 6.4°C.</p> <p>Severe Heat Wave: Maximum Temperature Departure from normal $\geq 6.5^\circ\text{C}$</p> <p>(b). Based on Actual maximum temperature</p> <p>Heat Wave: When actual maximum temperature $\geq 45^\circ\text{C}$.</p> <p>Severe Heat Wave: When actual maximum temperature $\geq 47^\circ\text{C}$</p> <p>(c). Criteria for heat wave for coastal stations</p> <p>When maximum temperature departure is $>4.5^\circ\text{C}$ from normal. Heat Wave may be described provided maximum temperature $\geq 37^\circ\text{C}$</p>
Warm Night	<p>When maximum temperature remains 40°C</p> <p>Warm Night: When minimum temperature departure 4.5°C to 6.4°C.</p> <p>Severe Warm Night: When minimum temperature departure $>6.4^\circ\text{C}$.</p>
Cold Wave	<p>When minimum temperature of a station $\leq 10^\circ\text{C}$ for plains and $\leq 0^\circ\text{C}$ for hilly regions.</p> <p>(a). Based on departure</p> <p>Cold Wave: Minimum Temperature Departure from normal -4.5°C to -6.4°C.</p> <p>Severe Cold Wave: Minimum Temperature Departure from normal $\leq -6.5^\circ\text{C}$</p> <p>(b) Based on actual Minimum Temperature (for Plains only)</p> <p>Cold Wave : When Minimum Temperature is $\leq 4.0^\circ\text{C}$</p> <p>Severe Cold Wave: When Minimum Temperature is $\leq 2.0^\circ\text{C}$</p> <p>(c) For Coastal Stations</p> <p>When Minimum Temperature departure is $\leq -4.5^\circ\text{C}$ & actual Minimum Temperature is $\leq 15^\circ\text{C}$</p>
Cold Day	<p>When minimum temperature of a station $\leq 10^\circ\text{C}$ for plains and $\leq 0^\circ\text{C}$ for hilly regions</p> <p>Based on departure</p> <p>Cold Day: Maximum Temperature Departure from normal -4.5°C to -6.4°C.</p> <p>Severe Cold Day: Maximum Temperature Departure from normal $\leq -6.5^\circ\text{C}$</p>
Fog	<p>Phenomenon of small droplets suspended in air and the horizontal visibility $< 1\text{km}$</p> <p>Moderate Fog: When the visibility between 500-200 metres</p> <p>Dense Fog: when the visibility between 50- 200 metres</p> <p>Very Dense Fog: when the visibility < 50 metres</p>
Thunderstorm	<p>Sudden electrical discharges manifested by a flash of light (Lightning) and a sharp rumbling sound (thunder)</p>
Dust/Sand Storm	<p>An ensemble of particles of dust or sand energetically lifted to great heights by a strong and turbulent wind.</p>
Frost	<p>Ice deposits on ground</p> <p>Air temperature $\leq 4^\circ\text{C}$ (over Plains)</p>
Squall	<p>A strong wind that rises suddenly, lasts for atleast 1 minute.</p> <p>Moderate: Wind speed 52-61 kmph</p> <p>Severe: Wind speed 62-87 kmph</p> <p>Very Severe: Wind speed >87 kmph</p>
Sea State	<p>Effect of various waves in the sea over specific area</p> <p>Rough to very rough: Wind speed 41-62 kmph (22-33 knots) & Wave height 2.5-6 metre</p> <p>High to very high: Wind speed 63-117 kmph (34-63 knots) & Wave height 6-14 metre</p> <p>Phenomenal: Wind speed >117 kmph (>63 knots) & Wave height >14 metre</p>
Cyclone	<p>Cyclonic Storm: Wind speed 62-87 kmph (34-47 knots)</p> <p>Severe Cyclonic Storm: Wind speed 88-117 kmph (48-63 knots)</p> <p>Very Severe Cyclonic Storm: Wind speed 118-165 kmph (64 - 89 knots)</p> <p>Extremely Severe Cyclonic Storm: Wind speed 166-220 kmph (90 -119 knots)</p> <p>Super Cyclone Strom: Wind speed >220 kmph (>119 knots)</p>