

Friday, February 28, 2025
Time of Issue: 0800 hours IST
(MORNING)

All India Impact Based Weather Warning Bulletin

Weather Warnings for next 7 days is given below:
(Graphics for warnings & rainfall distribution (Table 1) are given below the text:

28th February (Day 1):

- ❖ **Heavy to very heavy Rainfall/Snowfall (≥ 12 cm)** very likely at isolated places of Himachal Pradesh; **Heavy Rainfall/Snowfall (≥ 7 cm)** likely at isolated places over and Uttarakhand; **Heavy Rainfall (≥ 7 cm)** likely at isolated places over Jammu-Kashmir-Ladakh-Gilgit-Baltistan-Muzaffarabad, Punjab and Tamil Nadu, Puducherry & Karaikal.
- ❖ **Thunderstorm accompanied with gusty wind (30-40 kmph), Hailstorm and lightning** very likely at isolated places over Punjab, Rajasthan and Haryana-Chandigarh-Delhi; **Thunderstorm accompanied with Hailstorm** at isolated places over Uttarakhand, West Uttar Pradesh; **Thunderstorm accompanied with gusty wind (30-40 kmph) with lightning** at isolated places over Assam & Meghalaya, Rajasthan; **with lightning** at isolated places over Jammu-Kashmir-Ladakh-Gilgit-Baltistan-Muzaffarabad, East Uttar Pradesh, Sub-Himalayan West Bengal & Sikkim, Arunachal Pradesh, Kerala & Mahe, Tamil Nadu, Puducherry & Karaikal and Lakshadweep.
- ❖ **Heat wave conditions** very likely in isolated pockets of Coastal Karnataka.
- ❖ **Hot & Humid conditions** very likely at isolated pockets of Konkan & Goa.
- ❖ **Squally weather with wind (speed 35 kmph to 45 kmph gusting to 55 kmph)** very likely to prevail over gulf of Mannar & adjoining Comorin area along and off south Tamil Nadu coast, over south Andaman Sea & adjoining north Andaman sea, over many parts of southeast Bay of Bengal, northern parts of southwest Bay of Bengal. Fishermen are advised not to venture into these areas.

01st March (Day 2):

- ❖ **Heavy Rainfall (≥ 7 cm)** very likely at isolated places of Arunachal Pradesh, Tamil Nadu, Puducherry & Karaikal and Kerala & Mahe.
- ❖ **Thunderstorm accompanied with lightning** very likely at isolated pockets of Arunachal Pradesh, Assam & Meghalaya, Tamil Nadu, Puducherry & Karaikal, Kerala & Mahe.
- ❖ **Hot & Humid conditions** very likely at isolated pockets of Coastal Karnataka.
- ❖ **Squally weather with wind speed 35 kmph to 45 kmph gusting to 55 kmph** very likely to prevail over along and off South Kerala coast and adjoining Lakshadweep area, Gulf of Mannar & adjoining Comorin area, along and off South Tamil Nadu coast. Fishermen are advised not to venture into these areas.

02nd March (Day 3):

- ❖ **Thunderstorm accompanied with lightning** likely at isolated pockets of Kerala & Mahe.
- ❖ **Squally weather with wind speed 35 kmph to 45 kmph gusting to 55 kmph** likely to prevail over Lakshadweep area.

03rd March (Day 4):

- ❖ **No Weather Warning.**

04th March (Day 5):

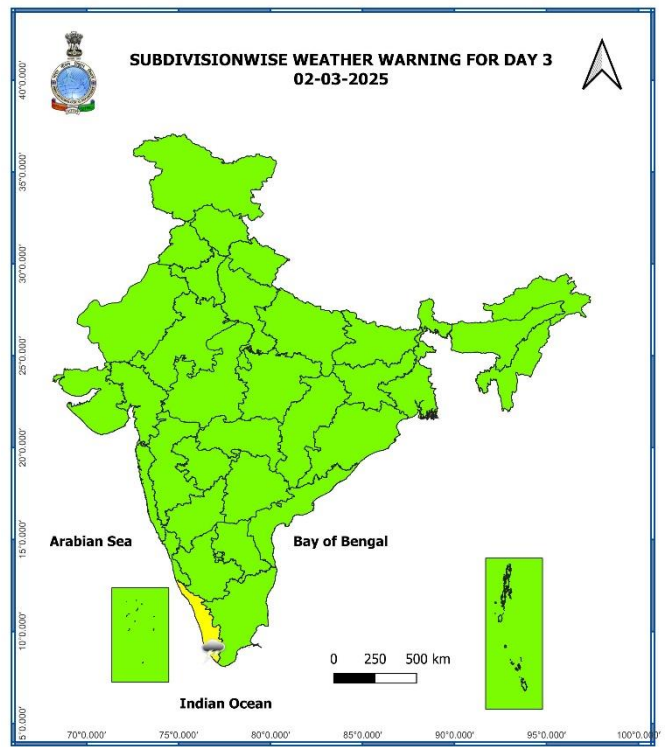
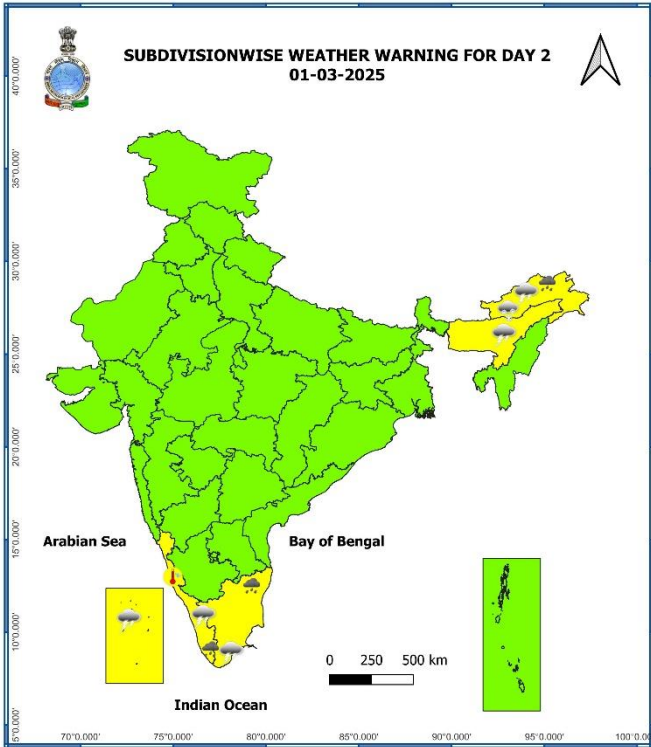
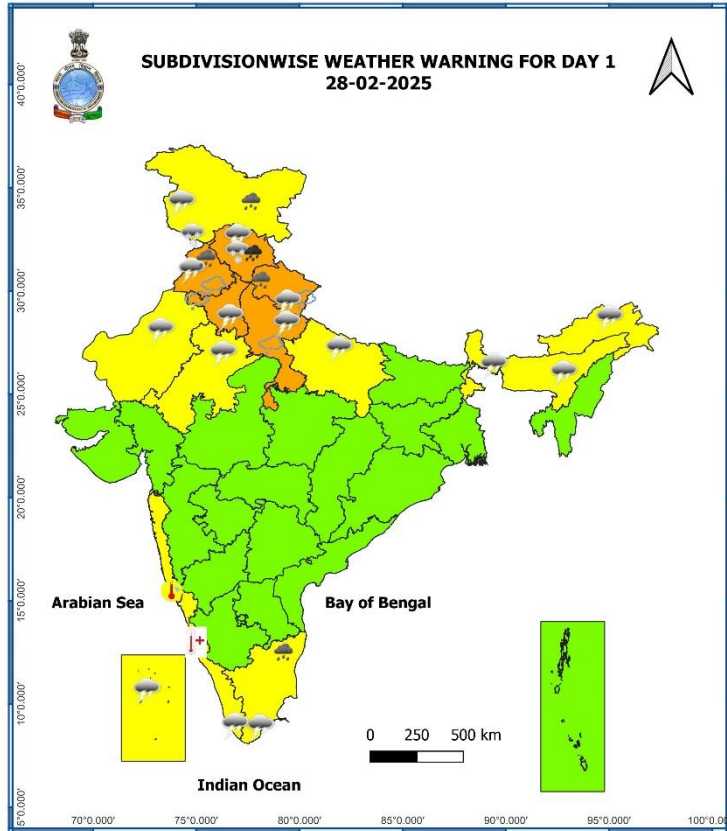
- ❖ **No Weather Warning.**

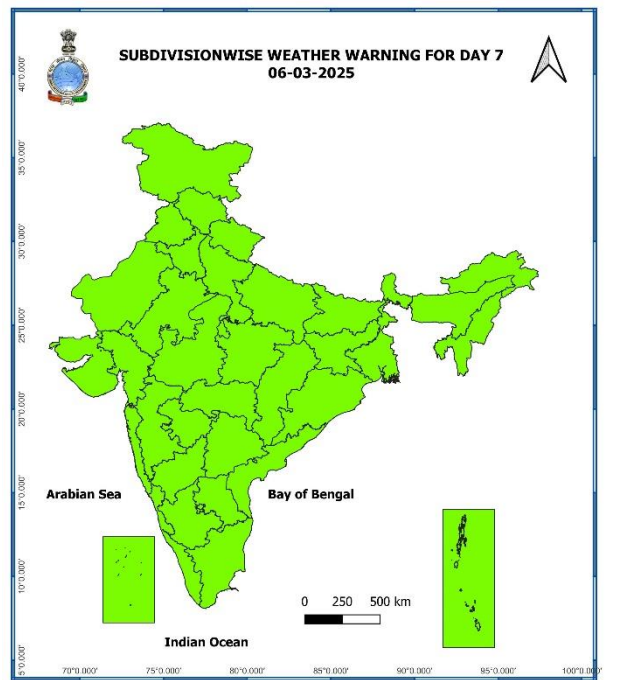
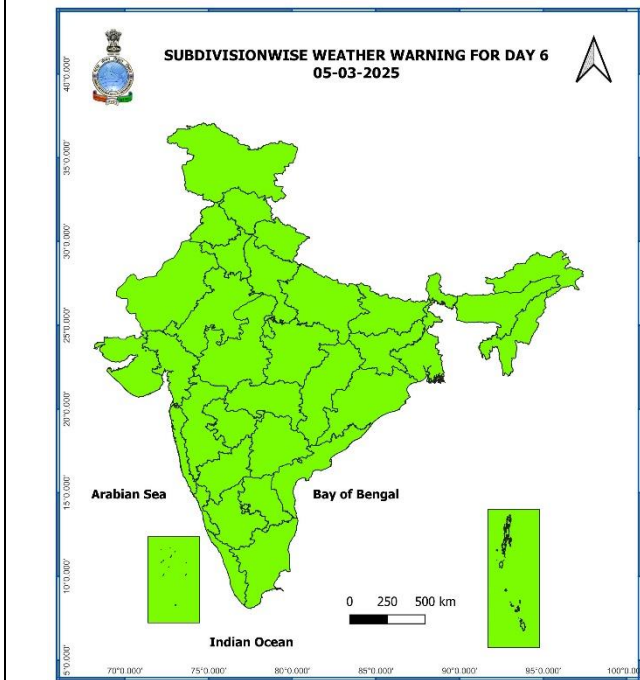
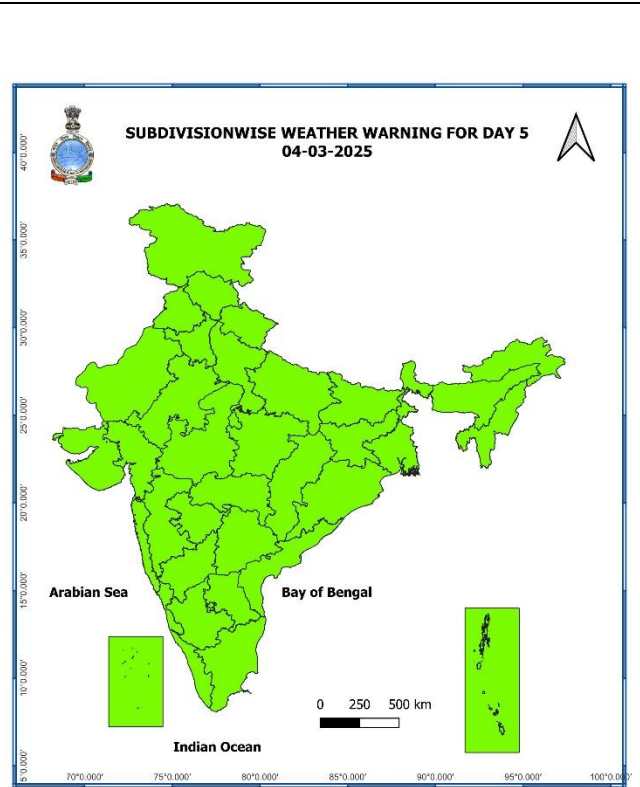
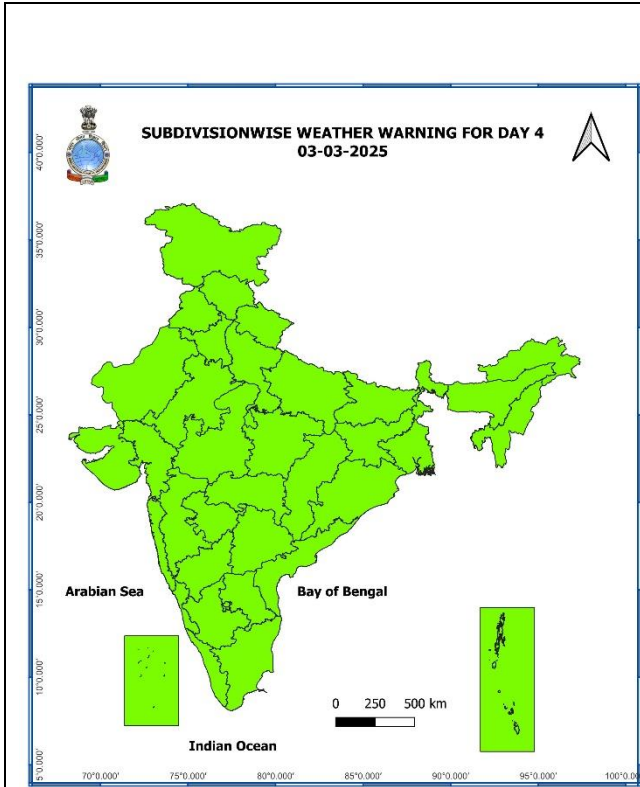
05th March (Day 6):

- ❖ **No Weather Warning.**

06th March (Day 7):

- ❖ **No Weather Warning.**





- Action may be taken based on **ORANGE AND RED** COLOUR warnings.
- Vulnerable regions likely urban and hilly areas action may be initiated for heavy rainfall warning.
- As the lead period increases forecast accuracy decreases.

Table-1

| 7 Days Rainfall Forecast | | | | | | | | |
|--------------------------|--------------------------------------|--------|--------|--------|--------|--------|--------|--------|
| S. No. | Subdivision | 28-Feb | 01-Mar | 02-Mar | 03-Mar | 04-Mar | 05-Mar | 06-Mar |
| | | Day 1 | Day 2 | Day 3 | Day 4 | Day 5 | Day 6 | Day 7 |
| 1 | ANDAMAN & NICOBAR ISLANDS | SCT | ISOL | ISOL | ISOL | DRY | DRY | DRY |
| 2 | ARUNACHAL PRADESH | ISOL | SCT | SCT | ISOL | ISOL | DRY | DRY |
| 3 | ASSAM & MEGHALAYA | ISOL | ISOL | ISOL | DRY | DRY | DRY | DRY |
| 4 | NAGALAND, MANIPUR, MIZORAM & TRIPURA | ISOL | ISOL | ISOL | DRY | DRY | DRY | DRY |
| 5 | SUB-HIMALAYAN WEST BENGAL & SIKKIM | SCT | ISOL | ISOL | DRY | ISOL | ISOL | ISOL |
| 6 | GANGETIC WEST BENGAL | DRY | DRY | DRY | DRY | DRY | DRY | DRY |
| 7 | ODISHA | DRY | DRY | DRY | DRY | DRY | DRY | DRY |
| 8 | JHARKHAND | ISOL | ISOL | DRY | DRY | DRY | DRY | DRY |
| 9 | BIHAR | ISOL | ISOL | DRY | DRY | DRY | DRY | DRY |
| 10 | EAST UTTAR PRADESH | ISOL | ISOL | DRY | DRY | DRY | DRY | DRY |
| 11 | WEST UTTAR PRADESH | SCT | ISOL | DRY | DRY | DRY | DRY | DRY |
| 12 | UTTARAKHAND | WS | SCT | ISOL | SCT | ISOL | DRY | DRY |
| 13 | HARYANA CHANDIGARH & DELHI | FWS | ISOL | DRY | ISOL | DRY | DRY | DRY |
| 14 | PUNJAB | WS | ISOL | DRY | SCT | DRY | DRY | DRY |
| 15 | HIMACHAL PRADESH | WS | ISOL | ISOL | FWS | SCT | ISOL | ISOL |
| 16 | JAMMU & KASHMIR AND LADAKH | WS | ISOL | SCT | FWS | ISOL | ISOL | ISOL |
| 17 | WEST RAJASTHAN | ISOL | DRY | DRY | DRY | DRY | DRY | DRY |
| 18 | EAST RAJASTHAN | ISOL | ISOL | DRY | DRY | DRY | DRY | DRY |
| 19 | WEST MADHYA PRADESH | DRY | DRY | DRY | DRY | DRY | DRY | DRY |
| 20 | EAST MADHYA PRADESH | DRY | DRY | DRY | DRY | DRY | DRY | DRY |
| 21 | GUJARAT REGION | DRY | DRY | DRY | DRY | DRY | DRY | DRY |
| 22 | SAURASHTRA & KUTCH | DRY | DRY | DRY | DRY | DRY | DRY | DRY |
| 23 | KONKAN & GOA | DRY | DRY | DRY | DRY | DRY | DRY | DRY |
| 24 | MADHYA MAHARASHTRA | DRY | DRY | DRY | DRY | DRY | DRY | DRY |
| 25 | MARATHAWADA | DRY | DRY | DRY | DRY | DRY | DRY | DRY |
| 26 | VIDARBHA | DRY | DRY | DRY | DRY | DRY | DRY | DRY |
| 27 | CHHATTISGARH | DRY | DRY | DRY | DRY | DRY | DRY | DRY |
| 28 | COASTAL ANDHRA PRADESH & YANAM | DRY | DRY | DRY | DRY | DRY | DRY | DRY |
| 29 | TELANGANA | DRY | DRY | DRY | DRY | DRY | DRY | DRY |
| 30 | RAYALASEEMA | ISOL | ISOL | DRY | DRY | DRY | DRY | DRY |
| 31 | TAMILNADU PUDUCHERRY & KARAIKAL | SCT | SCT | ISOL | ISOL | DRY | DRY | DRY |
| 32 | COASTAL KARNATAKA | DRY | DRY | DRY | DRY | DRY | DRY | DRY |
| 33 | NORTH INTERIOR KARNATAKA | DRY | DRY | DRY | DRY | DRY | DRY | DRY |
| 34 | SOUTH INTERIOR KARNATAKA | DRY | DRY | DRY | DRY | DRY | DRY | DRY |
| 35 | KERALA & MAHE | SCT | FWS | SCT | ISOL | DRY | DRY | DRY |
| 36 | LAKSHADWEEP | SCT | FWS | FWS | SCT | DRY | DRY | DRY |

• As the lead period increases forecast accuracy decreases.

Impact & Action Suggested due to heavy to very heavy rainfall/ snowfall over Jammu-Kashmir-Ladakh-Gilgit-Baltistan-Muzaffarabad, Himachal Pradesh & Uttarakhand on 28th February.

A. Impact Expected

- ❖ Localized Flooding of roads, water logging in low lying areas and closure of underpasses mainly in urban areas of the above region.
- ❖ Occasional reduction in visibility due to heavy rainfall.
- ❖ Disruption of traffic in major cities due to water logging in roads leading to increased travel time.
- ❖ Minor damage to kutcha roads.
- ❖ Possibilities of damage to vulnerable structure.
- ❖ Localized Landslides/Mudslides
- ❖ Damage to horticulture and standing crops in some areas due to inundation.
- ❖ It may lead to riverine flooding in some river catchments (for riverine flooding please visit Web page of CWC).

B. Action Suggested

- ❖ Check for traffic congestion on your route before leaving for your destination.
- ❖ Follow any traffic advisories that are issued in this regard.
- ❖ Avoid going to areas that face the water logging problems often.
- ❖ Avoid staying in vulnerable structure.

Impact expected and action suggested due to isolated thunderstorm with lightning/gusty winds & Hailstorm over Northwest India on 28th February and Northeast India on 28th February & 01st March.

Impact expected:

- Strong wind/hail may damage plantation, horticulture and standing crops.
- Hail may injure people and cattle at open places.
- Partial damage to vulnerable structures due to strong winds.
- Minor damage to kutcha houses/walls and huts.
- Loose objects may fly.

Action suggested:

- Stay indoors, close windows & doors and avoid travel if possible.
- Take safe shelters; do not take shelter under trees.
- Do not lie on concrete floors and do not lean against concrete walls.
- Unplug electrical/ electronic appliances.
- Immediately get out of water bodies.
- Keep away from all the objects that conduct electricity.

Impact expected and action suggested due to Heat Wave conditions over Konkan and Coastal Karnataka.

Yellow alert Areas:

- Moderate temperature & heat is tolerable for general public but moderate health concern likely for vulnerable people e.g. infants, elderly, people with chronic diseases.
- Avoid heat exposure.
- Wear lightweight, light colour, loose, cotton clothes.
Cover your head, use a cloth, hat or umbrella.

Agromet advisories for likely impact of Heavy Rainfall / Snowfall / Hailstorm / Heat Wave



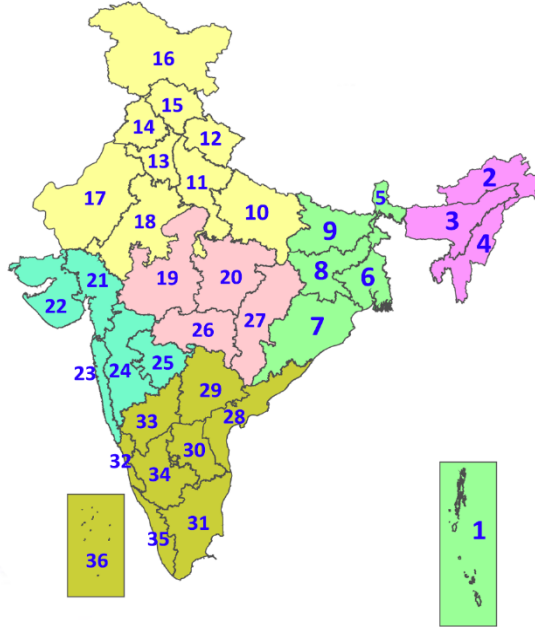
- Use hail nets or hail caps in fruit orchards and vegetable plants to protect them from mechanical damage in **Jammu & Kashmir, Himachal Pradesh, Uttarakhand, Punjab, Haryana and West Uttar Pradesh.**
- Complete harvesting of matured paddy in **Tamil Nadu and Kerala.**
- Make provision for draining out excess water from the standing crop fields in **Jammu and Kashmir, Himachal Pradesh, Uttarakhand, Punjab, Tamil Nadu and Kerala.** In the regions of heavy snowfall, shake the fruit bearing trees to remove snow immediately from the branches.
- In **Konkan and Coastal Karnataka,** apply light and frequent irrigation to the standing crops in the evening to protect them from heat wave.
- Keep the harvested produce in safer places or cover the produce with tarpaulin sheets in the fields.
- Provide mechanical support to horticultural crops and staking to vegetables to avoid lodging.

Livestock

- Keep the animals inside the shed during heavy rainfall/ hailstorm and provide them balanced feed.
- Store feed and fodder in a safe place to prevent spoilage.

LEGENDS

1. अंडमान और निकोबार द्वीपसमूह
2. अरुणाचल प्रदेश
3. असम और मेघालय
4. नागालैंड, मणिपुर, मिजोरम और त्रिपुरा
5. उप-हिमालयी पश्चिम बंगाल और सिक्किम
6. गंगीय पश्चिम बंगाल
7. ओडिशा
8. झारखंड
9. बिहार
10. पूर्वी उत्तर प्रदेश
11. पश्चिम उत्तर प्रदेश
12. उत्तराखंड
13. हरियाणा, चंडीगढ़ और दिल्ली
14. पंजाब
15. हिमाचल प्रदेश
16. जम्मू और कश्मीर और लद्दाख
17. पश्चिम राजस्थान
18. पूर्वी राजस्थान
19. पश्चिम मध्य प्रदेश
20. पूर्वी मध्य प्रदेश
21. गुजरात
22. सौराष्ट्र
23. कोंकण और गोवा
24. मध्य महाराष्ट्र
25. मराठवाड़ा
26. विदर्भ
27. छत्तीसगढ़
28. तटीय आंध्र प्रदेश और यनम
29. तेलंगाना
30. रायलसीमा
31. तमिलनाडु, पुडुचेरी और कराईकल
32. तटीय कर्नाटक
33. आंतरिक उत्तरी कर्नाटक
34. आंतरिक दक्षिणी कर्नाटक
35. केरल और माहे
36. लक्षद्वीप



1. Andaman & Nicobar Islands
2. Arunachal Pradesh
3. Assam & Meghalaya
4. Nagaland, Manipur, Mizoram & Tripura
5. Sub-Himalayan West Bengal & Sikkim
6. Gangetic West Bengal
7. Odisha
8. Jharkhand
9. Bihar
10. East Uttar Pradesh
11. West Uttar Pradesh
12. Uttarakhand
13. Haryana, Chandigarh & Delhi
14. Punjab
15. Himachal Pradesh
16. Jammu & Kashmir and Ladakh
17. West Rajasthan
18. East Rajasthan
19. West Madhya Pradesh
20. East Madhya Pradesh
21. Gujarat
22. Saurashtra
23. Konkan & Goa
24. Madhya Maharashtra
25. Marathwada
26. Vidarbha
27. Chhattisgarh
28. Coastal Andhra Pradesh & Yanam
29. Telangana
30. Rayalaseema
31. Tamilnadu, Puducherry & Karaikal
32. Coastal Karnataka
33. North Interior Karnataka
34. South Interior Karnataka
35. Kerala & Mahe
36. Lakshadweep

SPATIAL DISTRIBUTION (% of Stations reporting)

| % Stations | Category | % Stations | Category |
|------------|-------------------------------------|------------|------------------------------|
| 76-100 | Widespread (WS/Most Places) | 26-50 | Scattered (SCT/A Few Places) |
| 51-75 | Fairly Widespread (FWS/Many Places) | 1-25 | Isolated (ISOL) |

- | | | |
|----------------------|----------------------|--------------|
| Fog | Heavy Snow | Cold Wave |
| Heavy Rain | Dust Storm | Cold Day |
| Very Heavy Rain | Heat Wave | Ground Frost |
| Extremely Heavy Rain | Warm Night | |
| Thunder & Lightning | Hot Day | |
| Hailstorm | Hot & Humid | |
| Dust Raising Winds | Strong Surface Winds | |

COLOUR CODED WARNING

| |
|------------------------------------|
| No Warning (No Action) |
| Watch (Be Aware) |
| Alert (Be Prepared To Take Action) |
| Warning (Take Action) |

Probabilistic Forecast

| Terms | Probability of Occurrence (%) |
|-------------|-------------------------------|
| Unlikely | < 25 |
| Likely | 25 - 50 |
| Very Likely | 50 - 75 |
| Most Likely | > 75 |

* Red colour warning does not mean "Red Alert", Red colour warning means "Take Action".
Forecast and Warning for any day is valid from 0830 hours IST of day till 0830 hours IST of next day.
For more details, kindly visit <https://mausam.imd.gov.in> or contact: 011-2434-4599
(Service to the Nation since 1875)

DEFINITION/CRITERIA

Rain/ Snow *

Heavy: 64.5 to 115.5 mm/cm *
Very Heavy: 115.6 to 204.4 mm/cm*
Extremely Heavy: > 204.4 mm/cm *

Heat Wave

When maximum temperature of a station reaches $\geq 40^\circ\text{C}$ for plains and $\geq 30^\circ\text{C}$ for hilly regions
(a) Based on Departure from normal
Heat Wave: Maximum Temperature Departure from normal 4.5°C to 6.4°C .
Severe Heat Wave: Maximum Temperature Departure from normal $\geq 6.5^\circ\text{C}$
(b). Based on Actual maximum temperature
Heat Wave: When actual maximum temperature $\geq 45^\circ\text{C}$.
Severe Heat Wave: When actual maximum temperature $\geq 47^\circ\text{C}$
(c). Criteria for heat wave for coastal stations
 When maximum temperature departure is $>4.5^\circ\text{C}$ from normal. Heat Wave may be described provided maximum temperature $\geq 37^\circ\text{C}$

Warm Night

When maximum temperature remains 40°C
Warm Night: When minimum temperature departure 4.5°C to 6.4°C .
Severe Warm Night: When minimum temperature departure $>6.4^\circ\text{C}$.

Cold Wave

When minimum temperature of a station $\leq 10^\circ\text{C}$ for plains and $\leq 0^\circ\text{C}$ for hilly regions.
(a). Based on departure
Cold Wave: Minimum Temperature Departure from normal -4.5°C to -6.4°C .
Severe Cold Wave: Minimum Temperature Departure from normal $\leq -6.5^\circ\text{C}$
(b) Based on actual Minimum Temperature (for Plains only)
Cold Wave : When Minimum Temperature is $\leq 4.0^\circ\text{C}$
Severe Cold Wave: When Minimum Temperature is $\leq 2.0^\circ\text{C}$
(c) For Coastal Stations
 When Minimum Temperature departure is $\leq -4.5^\circ\text{C}$ & actual Minimum Temperature is $\leq 15^\circ\text{C}$

Cold Day

When minimum temperature of a station $\leq 10^\circ\text{C}$ for plains and $\leq 0^\circ\text{C}$ for hilly regions
Based on departure
Cold Day: Maximum Temperature Departure from normal -4.5°C to -6.4°C .
Severe Cold Day: Maximum Temperature Departure from normal $\leq -6.5^\circ\text{C}$

Fog

Phenomenon of small droplets suspended in air and the horizontal visibility $< 1\text{km}$
Moderate Fog: When the visibility between 500-200 metres
Dense Fog: when the visibility between 50- 200 metres
Very Dense Fog: when the visibility < 50 metres

Thunderstorm

Sudden electrical discharges manifested by a flash of light (Lightning) and a sharp rumbling sound (thunder)

Dust/Sand Storm

An ensemble of particles of dust or sand energetically lifted to great heights by a strong and turbulent wind.

Frost

Ice deposits on ground
 Air temperature $\leq 4^\circ\text{C}$ (over Plains)

Squall

A strong wind that rises suddenly, lasts for atleast 1 minute.
Moderate: Wind speed 52-61 kmph
Severe: Wind speed 62-87 kmph
Very Severe: Wind speed >87 kmph

Sea State

Effect of various waves in the sea over specific area
Rough to very rough: Wind speed 41-62 kmph (22-33 knots) & Wave height 2.5-6 metre
High to very high: Wind speed 63-117 kmph (34-63 knots) & Wave height 6-14 metre
Phenomenal: Wind speed >117 kmph (>63 knots) & Wave height >14 metre

Cyclone

Cyclonic Storm: Wind speed 62-87 kmph (34-47 knots)
Severe Cyclonic Storm: Wind speed 88-117 kmph (48-63 knots)
Very Severe Cyclonic Storm: Wind speed 118-165 kmph (64 - 89 knots)
Extremely Severe Cyclonic Storm: Wind speed 166-220 kmph (90 -119 knots)
Super Cyclone Strom: Wind speed >220 kmph (>119 knots)