

Tuesday, April 01, 2025
Time of Issue: 0800 hours IST
(MORNING)

All India Impact Based Weather Warning Bulletin

Weather Warnings for next 7 days is given below:

(Graphics for warnings & rainfall distribution (Table 1) are given below the text:

01st April (Day 1):

- ❖ **Thundersquall (wind speed reaching 50 - 60 kmph) accompanied with lightning & hail** very likely at isolated places over Madhya Maharashtra, Marathwada, North Interior Karnataka; **with gusty winds (speed reaching 40 - 50 kmph) & lightning** at isolated places over Madhya Pradesh, Vidarbha, Chhattisgarh, Konkan & Goa, Telangana; **with gusty winds (speed reaching 30 - 40 kmph)** at isolated places over Odisha, Gujarat state, Coastal Andhra Pradesh & Yanam, South Interior Karnataka and with **lightning** at isolated places over Kerala & Mahe and Coastal Karnataka.
- ❖ **Hot and Humid Conditions** very likely at isolated places over Assam & Meghalaya and Tripura, Gujarat state.
- ❖ **Heat wave conditions** very likely at isolated places over Saurashtra & Kutch.

02nd April (Day 2):

- ❖ **Thundersquall (wind speed reaching 50 - 60 kmph) accompanied with lightning & hail** likely at isolated places over Vidarbha, Chhattisgarh, Madhya Maharashtra, Marathwada, North Interior Karnataka; **with gusty winds (speed reaching 40 - 50 kmph), Hail & lightning** at isolated places over Madhya Pradesh, Odisha, Telangana; **with gusty winds (speed reaching 40 - 50 kmph) & lightning** at isolated places over Jharkhand, Konkan & Goa, Coastal Andhra Pradesh & Yanam, Coastal Karnataka, South Interior Karnataka; **with gusty winds (speed reaching 30 - 40 kmph)** at isolated places over Gangetic West Bengal, Gujarat state, Rayalaseema; **with lightning** Tamil Nadu, Puducherry & Karaikal, Kerala & Mahe.
- ❖ **Hot and Humid Conditions** likely at isolated places over Tripura, Gujarat state.

03rd April (Day 3):

- ❖ **Heavy rainfall** likely at isolated places over Kerala & Mahe, Coastal & South Interior Karnataka.
- ❖ **Thundersquall (wind speed reaching 50 - 60 kmph) accompanied with lightning & hail** likely at isolated places over Vidarbha, Chhattisgarh, Jharkhand, Odisha, North Interior Karnataka; **with gusty winds (speed reaching 40 - 50 kmph), Hail & lightning** at isolated places over Madhya Pradesh, Telangana, South Interior Karnataka; **with gusty winds (speed reaching 40 - 50 kmph) & lightning** at isolated places over Madhya Maharashtra, Marathwada, Kerala & Mahe, Coastal Andhra Pradesh & Yanam, Rayalaseema, Coastal Karnataka; **with gusty winds (speed reaching 30 - 40 kmph)** at isolated places over Gangetic West Bengal, Konkan & Goa; **with lightning** at isolated places over Tamil Nadu, Puducherry & Karaikal, Andaman & Nicobar Islands.
- ❖ **Hot and Humid Conditions** likely at isolated places over Tripura, Gujarat state.

04th April (Day 4):

- ❖ **Heavy rainfall** likely at isolated places over Kerala & Mahe, Coastal & South Interior Karnataka.
- ❖ **Thundersquall (wind speed reaching 50 - 60 kmph) accompanied with lightning & hail** likely at isolated places over Jharkhand, Odisha; **with gusty winds (speed reaching 40 - 50 kmph) & lightning** at isolated places over East Madhya Pradesh, Chhattisgarh, Kerala & Mahe, Coastal Andhra Pradesh & Yanam, Rayalaseema, Karnataka; **with gusty winds (speed reaching 30 - 40 kmph)** at isolated places over Vidarbha, Gangetic West Bengal, Marathwada; **with lightning** Tamil Nadu, Puducherry & Karaikal, Andaman & Nicobar Islands.
- ❖ **Hot and Humid Conditions** likely at isolated places over Gujarat state.

05th April (Day 5):

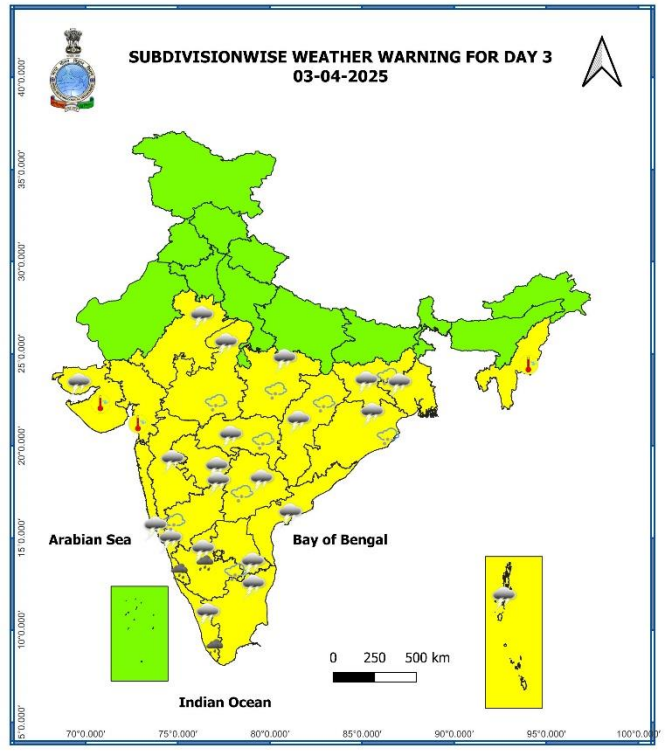
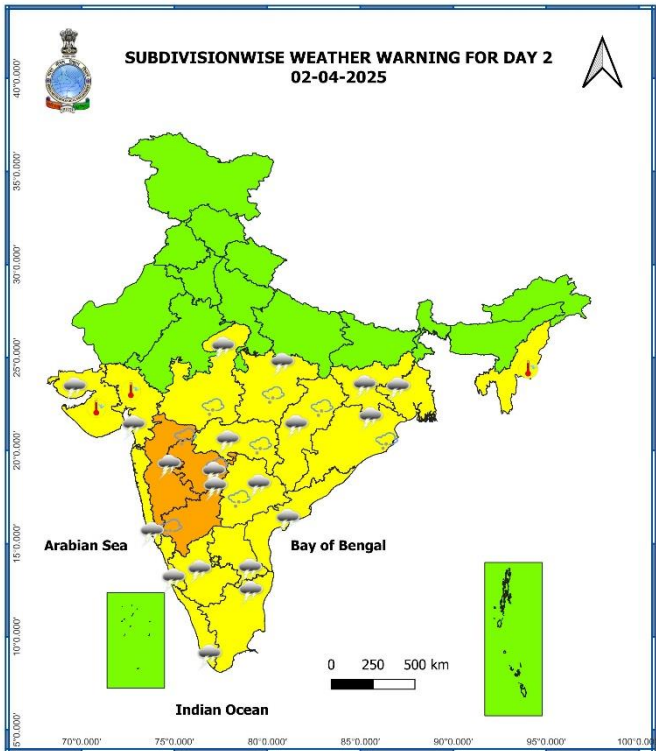
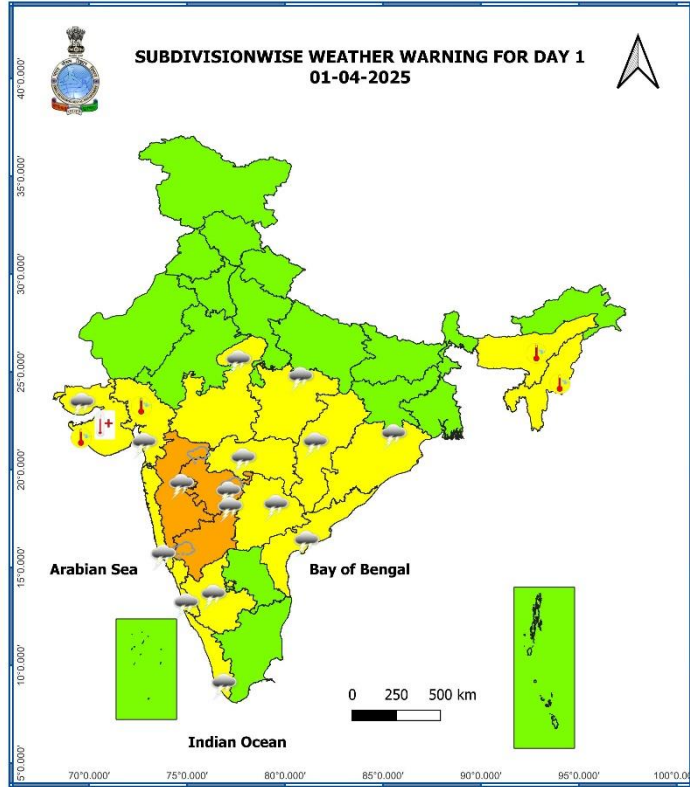
- ❖ **Heavy rainfall** likely at isolated places over Kerala & Mahe.

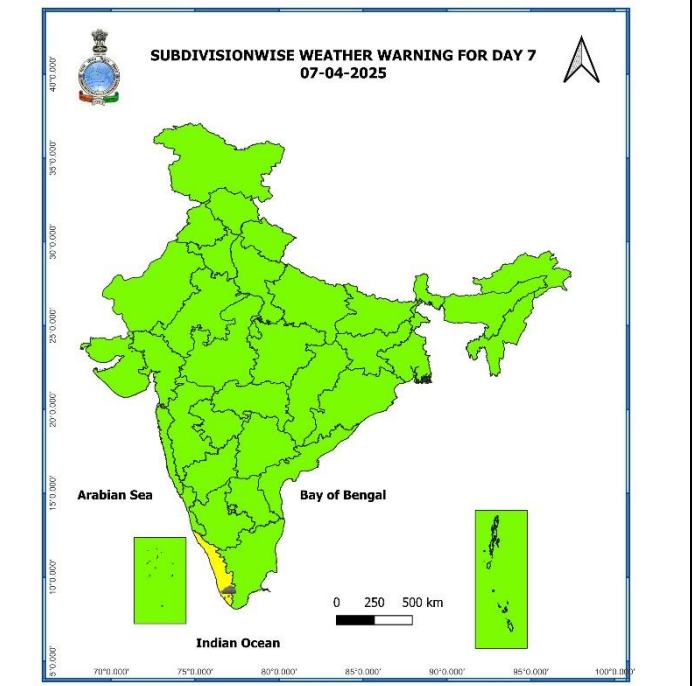
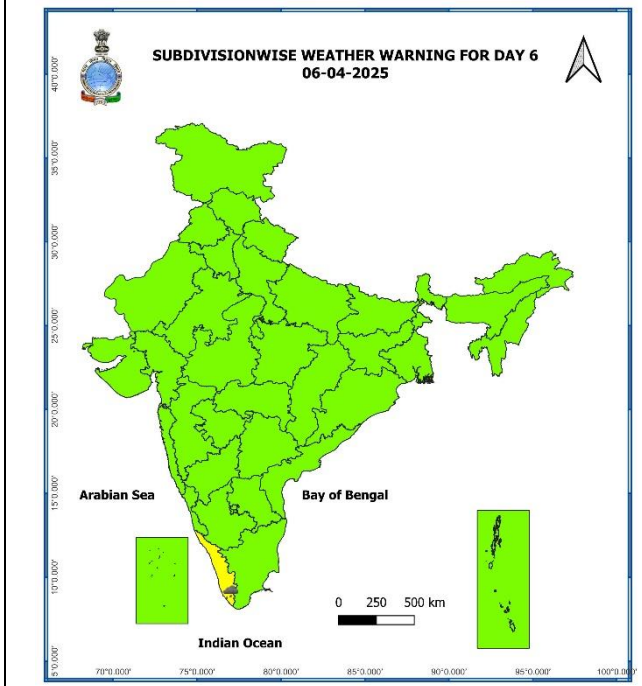
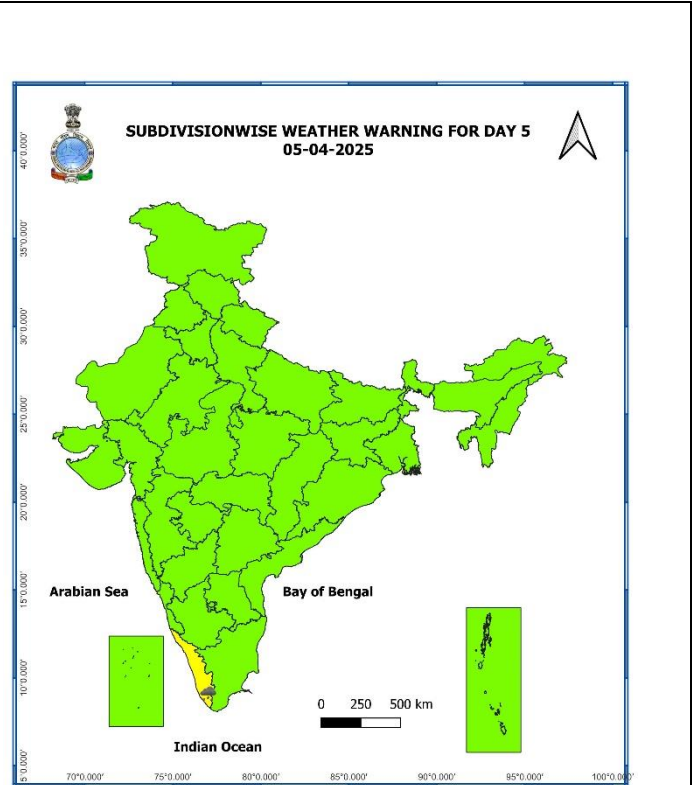
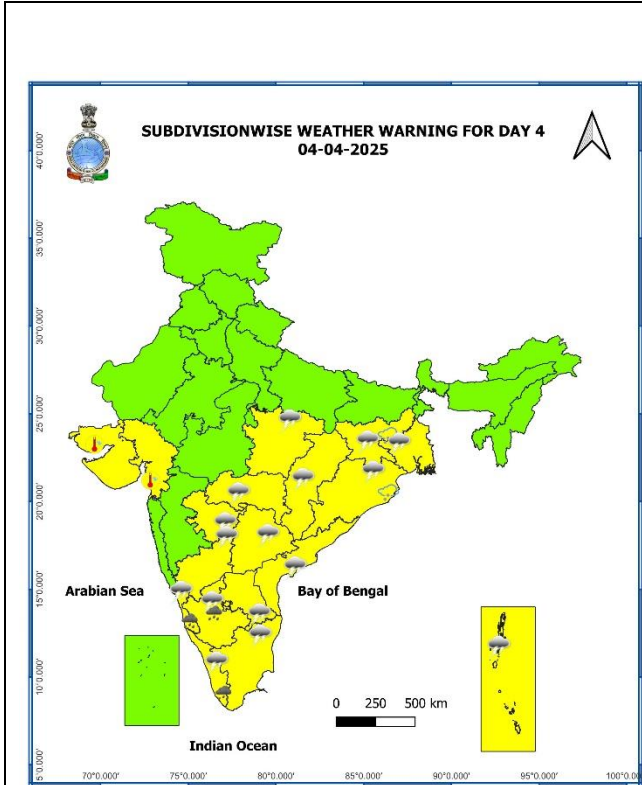
06th April (Day 6):

- ❖ **Heavy rainfall** likely at isolated places over Kerala & Mahe.

07th April (Day 7):

- ❖ **Heavy rainfall** likely at isolated places over Kerala & Mahe.





- Action may be taken based on **ORANGE AND RED** COLOUR warnings.
- Vulnerable regions likely urban and hilly areas action may be initiated for heavy rainfall warning.
- As the lead period increases forecast accuracy decreases.

Table-1

7 Days Rainfall Forecast

S. No.	Subdivision	01-Apr	02-Apr	03-Apr	04-Apr	05-Apr	06-Apr	07-Apr
		Day 1	Day 2	Day 3	Day 4	Day 5	Day 6	Day 7
1	ANDAMAN & NICOBAR ISLANDS	SCT	FWS	WS	WS	WS	FWS	FWS
2	ARUNACHAL PRADESH	ISOL	ISOL	ISOL	SCT	SCT	SCT	SCT
3	ASSAM & MEGHALAYA	ISOL	DRY	DRY	ISOL	SCT	FWS	FWS
4	NAGALAND, MANIPUR, MIZORAM & TRIPURA	ISOL	DRY	DRY	ISOL	ISOL	SCT	SCT
5	SUB-HIMALAYAN WEST BENGAL & SIKKIM	DRY	DRY	DRY	DRY	DRY	DRY	DRY
6	GANGETIC WEST BENGAL	DRY	ISOL	ISOL	ISOL	ISOL	ISOL	ISOL
7	ODISHA	ISOL	ISOL	ISOL	ISOL	ISOL	ISOL	ISOL
8	JHARKHAND	DRY	ISOL	ISOL	ISOL	DRY	DRY	DRY
9	BIHAR	DRY	DRY	DRY	DRY	DRY	DRY	DRY
10	EAST UTTAR PRADESH	DRY	DRY	DRY	DRY	DRY	DRY	DRY
11	WEST UTTAR PRADESH	DRY	DRY	DRY	DRY	DRY	DRY	DRY
12	UTTARAKHAND	DRY	DRY	ISOL	ISOL	DRY	DRY	DRY
13	HARYANA CHANDIGARH & DELHI	DRY	DRY	DRY	DRY	DRY	DRY	DRY
14	PUNJAB	DRY	DRY	DRY	DRY	DRY	DRY	DRY
15	HIMACHAL PRADESH	DRY	DRY	ISOL	DRY	DRY	DRY	DRY
16	JAMMU & KASHMIR AND LADAKH	DRY	DRY	SCT	DRY	DRY	DRY	DRY
17	WEST RAJASTHAN	DRY	DRY	DRY	DRY	DRY	DRY	DRY
18	EAST RAJASTHAN	DRY	ISOL	ISOL	DRY	DRY	DRY	DRY
19	WEST MADHYA PRADESH	ISOL	ISOL	ISOL	DRY	DRY	DRY	DRY
20	EAST MADHYA PRADESH	ISOL	ISOL	ISOL	ISOL	DRY	DRY	DRY
21	GUJARAT REGION	ISOL	ISOL	ISOL	DRY	DRY	DRY	DRY
22	SAURASHTRA & KUTCH	ISOL	ISOL	ISOL	DRY	DRY	DRY	DRY
23	KONKAN & GOA	ISOL	ISOL	ISOL	ISOL	ISOL	ISOL	ISOL
24	MADHYA MAHARASHTRA	SCT	SCT	ISOL	ISOL	ISOL	ISOL	ISOL
25	MARATHAWADA	SCT	SCT	ISOL	ISOL	ISOL	ISOL	ISOL
26	VIDARBHA	ISOL	SCT	ISOL	ISOL	ISOL	DRY	DRY
27	CHHATTISGARH	ISOL	ISOL	ISOL	ISOL	ISOL	DRY	DRY
28	COASTAL ANDHRA PRADESH & YANAM	ISOL	ISOL	SCT	SCT	ISOL	ISOL	ISOL
29	TELANGANA	ISOL	ISOL	SCT	FWS	FWS	ISOL	ISOL
30	RAYALASEEMA	ISOL	ISOL	FWS	FWS	SCT	ISOL	ISOL
31	TAMILNADU PUDUCHERRY & KARAİKAL	ISOL	SCT	SCT	SCT	SCT	ISOL	ISOL
32	COASTAL KARNATAKA	ISOL	ISOL	FWS	WS	WS	SCT	SCT
33	NORTH INTERIOR KARNATAKA	ISOL	ISOL	ISOL	SCT	SCT	SCT	SCT
34	SOUTH INTERIOR KARNATAKA	ISOL	ISOL	SCT	WS	FWS	ISOL	ISOL
35	KERALA & MAHE	SCT	SCT	WS	WS	WS	FWS	FWS
36	LAKSHADWEEP	DRY	DRY	DRY	DRY	DRY	SCT	SCT

• As the lead period increases forecast accuracy decreases.

Impact expected and action suggested due Heat Wave conditions over Saurashtra & Kutch on 1st April.

Orange alert Areas

- High temperature & increased likelihood of heat illness symptoms in people who are either exposed to sun for a prolonged period or doing heavy work.
- High health concern for vulnerable people e.g. infants, elderly, people with chronic diseases.
- Avoid heat exposure- keep cool. Avoid dehydration.
- Drink sufficient water- even if not thirsty.
- Use ORS, homemade drinks like lassi, torani (rice water), lemon water, buttermilk, etc. to keep yourself hydrated.

Yellow alert Areas

- Moderate temperature & heat is tolerable for general public but moderate health concern likely for vulnerable people e.g. infants, elderly, people with chronic diseases.
- Avoid heat exposure.
- Wear lightweight, light colour, loose, cotton clothes.
- Cover your head, use a cloth, hat or umbrella.

Impact expected and action suggested due to isolated thunderstorm with lightning/gusty winds & Hailstorm over central and adjoining east & Peninsular India during 01st -04th April.

Impact expected:

- Strong wind/hail may damage plantation, horticulture and standing crops.
- Hail may injure people and cattle at open places.
- Partial damage to vulnerable structures due to strong winds.
- Minor damage to kutcha houses/walls and huts.
- Loose objects may fly.

Action suggested:

- Stay indoors, close windows & doors and avoid travel if possible.
- Take safe shelters; do not take shelter under trees.
- Do not lie on concrete floors and do not lean against concrete walls.
- Unplug electrical/ electronic appliances.
- Immediately get out of water bodies.
- Keep away from all the objects that conduct electricity.

Agromet advisories for likely impact of Hailstorm, Heavy Rainfall, Strong Surface Winds

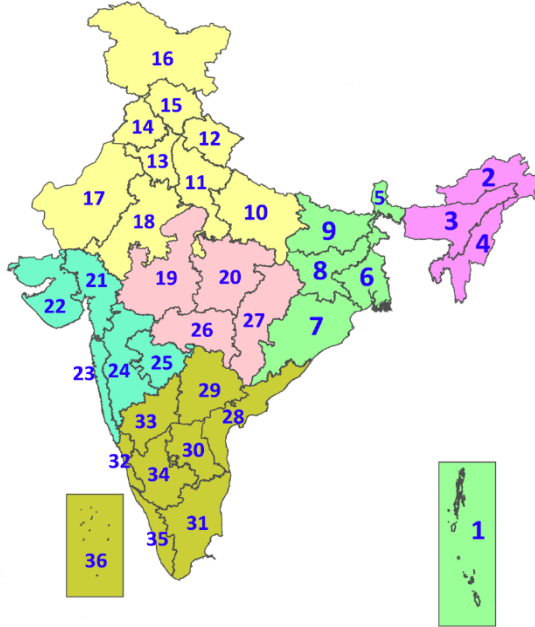
- In **Madhya Maharashtra, Marathwada, Vidarbha, Coastal and North Interior Karnataka, Telangana, Madhya Pradesh, Chhattisgarh, Odisha and Jharkhand**, immediately harvest the matured crops, fruits and vegetables and shift the harvested produce in safer places or cover the produce with tarpaulin sheets in the fields to avoid the adverse impact of likely hailstorm. Use hail net and hail caps to prevent mechanical damage in orchards due to hailstorms.
- In **Tamilnadu, Kerala, Coastal and South Interior Karnataka**, make provision to drain out excess water from standing crop and vegetable fields.
- Provide mechanical support to horticultural crops and staking to vegetables to avoid lodging.

Livestock/ poultry

- Keep the animals inside the shed during heavy rainfall/hailstorm and provide them balanced feed. Store feed and fodder in a safe place to prevent spoilage.

LEGENDS

1. अंडमान और निकोबार द्वीपसमूह
2. अरुणाचल प्रदेश
3. असम और मेघालय
4. नागालैंड, मणिपुर, मिजोरम और त्रिपुरा
5. उप-हिमालयी पश्चिम बंगाल और सिक्किम
6. गंगीय पश्चिम बंगाल
7. ओडिशा
8. झारखंड
9. बिहार
10. पूर्वी उत्तर प्रदेश
11. पश्चिम उत्तर प्रदेश
12. उत्तराखंड
13. हरियाणा, चंडीगढ़ और दिल्ली
14. पंजाब
15. हिमाचल प्रदेश
16. जम्मू और कश्मीर और लद्दाख
17. पश्चिम राजस्थान
18. पूर्वी राजस्थान
19. पश्चिम मध्य प्रदेश
20. पूर्वी मध्य प्रदेश
21. गुजरात
22. सौराष्ट्र
23. कोंकण और गोवा
24. मध्य महाराष्ट्र
25. मराठवाड़ा
26. विदर्भ
27. छत्तीसगढ़
28. तटीय आंध्र प्रदेश और यनम
29. तेलंगाना
30. रायलसीमा
31. तमिलनाडु, पुडुचेरी और कराईकल
32. तटीय कर्नाटक
33. आंतरिक उत्तरी कर्नाटक
34. आंतरिक दक्षिणी कर्नाटक
35. केरल और माहे
36. लक्षद्वीप



1. Andaman & Nicobar Islands
2. Arunachal Pradesh
3. Assam & Meghalaya
4. Nagaland, Manipur, Mizoram & Tripura
5. Sub-Himalayan West Bengal & Sikkim
6. Gangetic West Bengal
7. Odisha
8. Jharkhand
9. Bihar
10. East Uttar Pradesh
11. West Uttar Pradesh
12. Uttarakhand
13. Haryana, Chandigarh & Delhi
14. Punjab
15. Himachal Pradesh
16. Jammu & Kashmir and Ladakh
17. West Rajasthan
18. East Rajasthan
19. West Madhya Pradesh
20. East Madhya Pradesh
21. Gujarat
22. Saurashtra
23. Konkan & Goa
24. Madhya Maharashtra
25. Marathwada
26. Vidarbha
27. Chhattisgarh
28. Coastal Andhra Pradesh & Yanam
29. Telangana
30. Rayalaseema
31. Tamilnadu, Puducherry & Karaikal
32. Coastal Karnataka
33. North Interior Karnataka
34. South Interior Karnataka
35. Kerala & Mahe
36. Lakshadweep

SPATIAL DISTRIBUTION (% of Stations reporting)

% Stations	Category	% Stations	Category
76-100	Widespread (WS/Most Places)	26-50	Scattered (SCT/A Few Places)
51-75	Fairly Widespread (FWS/Many Places)	1-25	Isolated (ISOL)

- | | | |
|----------------------|----------------------|--------------|
| Fog | Heavy Snow | Cold Wave |
| Heavy Rain | Dust Storm | Cold Day |
| Very Heavy Rain | Heat Wave | Ground Frost |
| Extremely Heavy Rain | Warm Night | |
| Thunder & Lightning | Hot Day | |
| Hailstorm | Hot & Humid | |
| Dust Raising Winds | Strong Surface Winds | |

COLOUR CODED WARNING

No Warning (No Action)
Watch (Be Aware)
Alert (Be Prepared To Take Action)
Warning (Take Action)

Probabilistic Forecast

Terms	Probability of Occurrence (%)
Unlikely	< 25
Likely	25 - 50
Very Likely	50 - 75
Most Likely	> 75

* Red colour warning does not mean "Red Alert", Red colour warning means "Take Action".
Forecast and Warning for any day is valid from 0830 hours IST of day till 0830 hours IST of next day.
For more details, kindly visit <https://mausam.imd.gov.in> or contact: 011-2434-4599
(Service to the Nation since 1875)

DEFINITION/CRITERIA

Rain/ Snow *

Heavy: 64.5 to 115.5 mm/cm *
 Very Heavy: 115.6 to 204.4 mm/cm*
 Extremely Heavy: > 204.4 mm/cm *

Heat Wave

When maximum temperature of a station reaches $\geq 40^\circ\text{C}$ for plains and $\geq 30^\circ\text{C}$ for hilly regions
(a) Based on Departure from normal

Heat Wave: Maximum Temperature Departure from normal 4.5°C to 6.4°C .

Severe Heat Wave: Maximum Temperature Departure from normal $\geq 6.5^\circ\text{C}$

(b). Based on Actual maximum temperature

Heat Wave: When actual maximum temperature $\geq 45^\circ\text{C}$.

Severe Heat Wave: When actual maximum temperature $\geq 47^\circ\text{C}$

(c). Criteria for heat wave for coastal stations

When maximum temperature departure is $>4.5^\circ\text{C}$ from normal. Heat Wave may be described provided maximum temperature $\geq 37^\circ\text{C}$

Warm Night

When maximum temperature remains 40°C

Warm Night: When minimum temperature departure 4.5°C to 6.4°C .

Severe Warm Night: When minimum temperature departure $>6.4^\circ\text{C}$.

Cold Wave

When minimum temperature of a station $\leq 10^\circ\text{C}$ for plains and $\leq 0^\circ\text{C}$ for hilly regions.
(a). Based on departure

Cold Wave: Minimum Temperature Departure from normal -4.5°C to -6.4°C .

Severe Cold Wave: Minimum Temperature Departure from normal $\leq -6.5^\circ\text{C}$

(b) Based on actual Minimum Temperature (for Plains only)

Cold Wave : When Minimum Temperature is $\leq 4.0^\circ\text{C}$

Severe Cold Wave: When Minimum Temperature is $\leq 2.0^\circ\text{C}$

(c) For Coastal Stations

When Minimum Temperature departure is $\leq -4.5^\circ\text{C}$ & actual Minimum Temperature is $\leq 15^\circ\text{C}$

Cold Day

When minimum temperature of a station $\leq 10^\circ\text{C}$ for plains and $\leq 0^\circ\text{C}$ for hilly regions
Based on departure

Cold Day: Maximum Temperature Departure from normal -4.5°C to -6.4°C .

Severe Cold Day: Maximum Temperature Departure from normal $\leq -6.5^\circ\text{C}$

Fog

Phenomenon of small droplets suspended in air and the horizontal visibility $< 1\text{km}$

Moderate Fog: When the visibility between 500-200 metres

Dense Fog: when the visibility between 50- 200 metres

Very Dense Fog: when the visibility < 50 metres

Thunderstorm

Sudden electrical discharges manifested by a flash of light (Lightning) and a sharp rumbling sound (thunder)

Dust/Sand Storm

An ensemble of particles of dust or sand energetically lifted to great heights by a strong and turbulent wind.

Frost

Ice deposits on ground

Air temperature $\leq 4^\circ\text{C}$ (over Plains)

Squall

A strong wind that rises suddenly, lasts for atleast 1 minute.

Moderate: Wind speed 52-61 kmph

Severe: Wind speed 62-87 kmph

Very Severe: Wind speed >87 kmph

Sea State

Effect of various waves in the sea over specific area

Rough to very rough: Wind speed 41-62 kmph (22-33 knots) & Wave height 2.5-6 metre

High to very high: Wind speed 63-117 kmph (34-63 knots) & Wave height 6-14 metre

Phenomenal: Wind speed >117 kmph (>63 knots) & Wave height >14 metre

Cyclone

Cyclonic Storm: Wind speed 62-87 kmph (34-47 knots)

Severe Cyclonic Storm: Wind speed 88-117 kmph (48-63 knots)

Very Severe Cyclonic Storm: Wind speed 118-165 kmph (64 - 89 knots)

Extremely Severe Cyclonic Storm: Wind speed 166-220 kmph (90 -119 knots)

Super Cyclone Storm: Wind speed >220 kmph (>119 knots)

* Red colour warning does not mean "Red Alert", Red colour warning means "Take Action".
 Forecast and Warning for any day is valid from 0830 hours IST of day till 0830 hours IST of next day.
 For more details, kindly visit <https://mausam.imd.gov.in> or contact: 011-2434-4599
 (Service to the Nation since 1875)

Hot and Humid: When maximum temperatures remains 3°C above normal along with the above normal relative humidity.