

Thursday, March 20, 2025
Time of Issue: 2000 hours IST
(NIGHT)

All India Impact Based Weather Warning Bulletin

Weather Warnings for next 7 days is given below:

(Graphics for warnings & rainfall distribution (Table 1) are given below the text:

20th March (Day 1):

- ❖ **Thunderstorm accompanied with squally winds (speed reaching 50-60 kmph), Hailstorm & lightning** likely at isolated places over Gangetic West Bengal and Odisha; **with squally winds (speed reaching 40-50 kmph), Hailstorm & lightning** at isolated places over East Madhya Pradesh, Vidarbha, Chhattisgarh, Assam & Meghalaya and Jharkhand; **with gusty winds (speed reaching 40-50 kmph) & lightning** likely at isolated places over West Madhya Pradesh, Sub-Himalayan West Bengal & Sikkim and Nagaland, Manipur, Mizoram & Tripura; **with gusty winds (speed reaching 30 - 40 kmph) lightning** likely at isolated places over Uttar Pradesh, Rajasthan, Bihar, Marathwada and South Interior Karnataka; **with lightning** at isolated places over Punjab, Jammu-Kashmir-Ladakh-Gilgit-Baltistan-Muzaffarabad, Himachal Pradesh, Uttarakhand, Haryana-Chandigarh- Delhi, Arunachal Pradesh, Kerala & Mahe and Telangana.
- ❖ **Hot and Humid Conditions** very likely at isolated places over Tamil Nadu, Puducherry & Karaikal.
- ❖ **Squally weather with wind speed 35 kmph to 45 kmph gusting to 55 kmph** is likely to prevail along and off west Bengal coast and adjoining north Odisha coast. Fishermen are advised not to venture into these areas.

21st March (Day 2):

- ❖ **Heavy rainfall** very likely at isolated places over Arunachal Pradesh.
- ❖ **Thunderstorm accompanied with squally winds (speed reaching 50-60 kmph), Hailstorm & lightning** likely at isolated places over East Madhya Pradesh, Chhattisgarh, Gangetic West Bengal, Jharkhand and Odisha; **with squally winds (speed reaching 40-50 kmph), Hailstorm & lightning** at isolated places over Vidarbha, Assam & Meghalaya and Telangana; **with squally winds (speed reaching 30-40 kmph), Hailstorm & lightning** at isolated places over Bihar; **with gusty winds (speed reaching 50-60 kmph) & lightning** likely at isolated places over West Madhya Pradesh; **with gusty winds (speed reaching 40 - 50 kmph) lightning** at isolated places over East Uttar Pradesh, Marathwada and Nagaland, Manipur, Mizoram & Tripura; **with gusty winds (speed reaching 30 - 40 kmph) lightning** at isolated places over West Uttar Pradesh, Sub-Himalayan West Bengal & Sikkim, and South Interior Karnataka; **with lightning** at isolated places over Arunachal Pradesh, Coastal Andhra Pradesh & Yanam and Kerala & Mahe.
- ❖ **Hot and Humid Conditions** very likely at isolated places over Tamil Nadu, Puducherry & Karaikal.
- ❖ **Squally weather with wind speed 35 kmph to 45 kmph gusting to 55 kmph** is likely to prevail along and off west Bengal coast and north Odisha coast. Fishermen are advised not to venture into these areas.

22nd March (Day 3):

- ❖ **Heavy rainfall** very likely at isolated places over Arunachal Pradesh.
- ❖ **Thunderstorm accompanied with winds (speed reaching 50-60 kmph) Hailstorm & lightning** likely at isolated places over Odisha; **with gusty winds (speed reaching 40 - 50 kmph) Hailstorm & lightning** likely at isolated places over East Madhya Pradesh, Vidarbha, Chhattisgarh, Sub-Himalayan West Bengal & Sikkim, Jharkhand and Telangana; **with gusty winds (speed reaching 30 - 40 kmph), Hailstorm & lightning** likely at isolated places over Bihar; **with gusty winds (speed reaching 40 - 50 kmph) lightning** likely at isolated places over East Uttar Pradesh, Gangetic West Bengal, Marathwada, Kerala & Mahe, Coastal Andhra Pradesh & Yanam, Rayalaseema and Karnataka; **with gusty winds (speed reaching 30 - 40 kmph) & lightning** likely at isolated places over Assam & Meghalaya; **with lightning** at isolated places over Arunachal Pradesh, Nagaland, Manipur, Mizoram & Tripura, and Tamil Nadu, Puducherry & Karaikal.
- ❖ **Hot and Humid Conditions** very likely at isolated places over coastal Gujarat.

23rd March (Day 4):

- ❖ **Thunderstorm accompanied with gusty winds (speed reaching 40 - 50 kmph) & lightning** likely at isolated places over Kerala & Mahe, Coastal Andhra Pradesh & Yanam, Rayalaseema and Karnataka; **with gusty winds (speed reaching 30 - 40 kmph) & lightning** likely at isolated places over East Madhya Pradesh, Vidarbha and Assam & Meghalaya; **with lightning** at isolated places over Chhattisgarh, Gangetic West Bengal, Bihar, Odisha, Arunachal Pradesh, Telangana, Nagaland, Manipur, Mizoram & Tripura and Tamil Nadu, Puducherry & Karaikal.
- ❖ **Hot and Humid Conditions** likely at isolated places over coastal Gujarat.

24th March (Day 5):

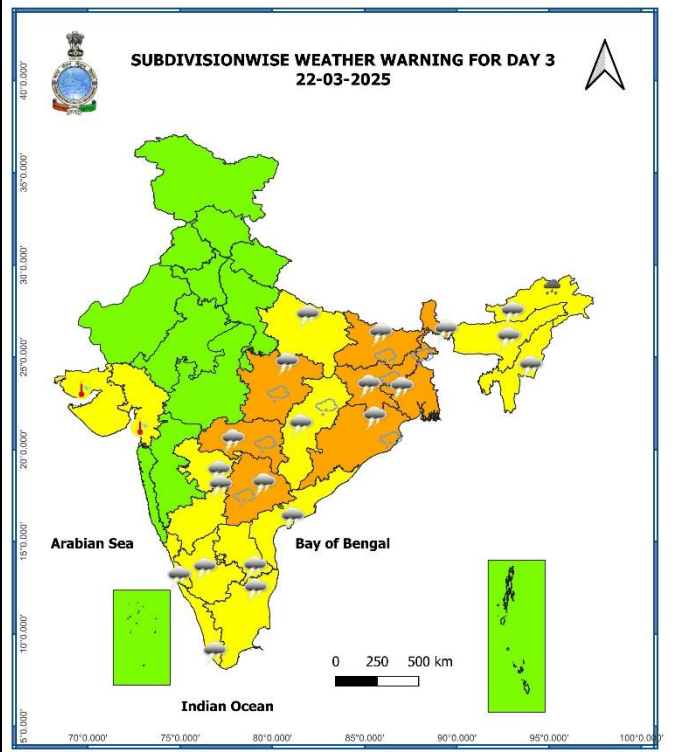
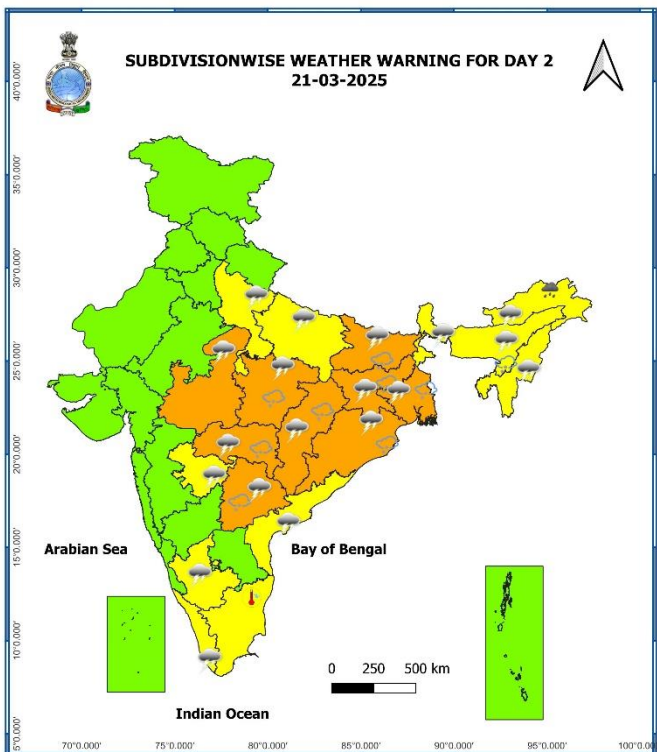
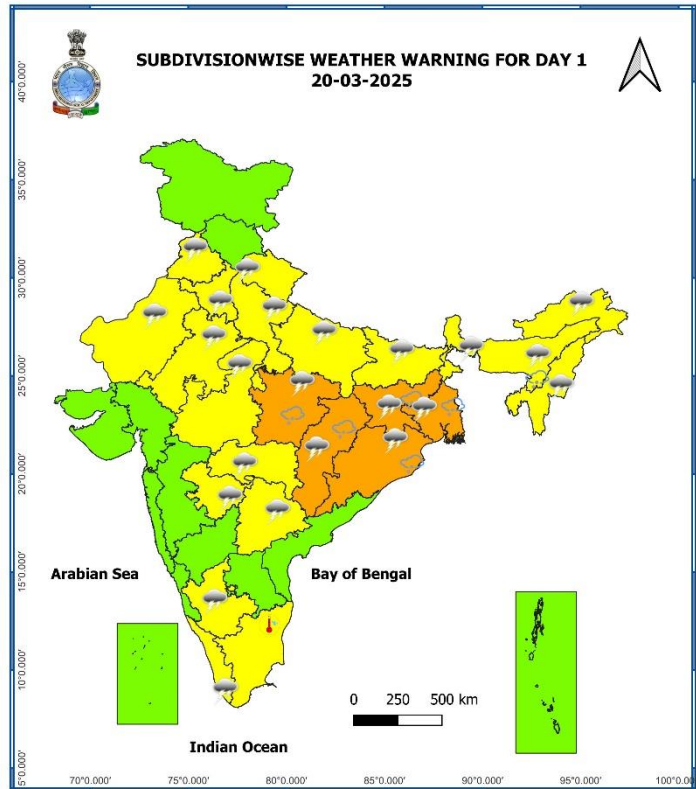
- ❖ **Thunderstorm accompanied with gusty winds (speed reaching 30 - 40 kmph) & lightning** likely at isolated places over Coastal Andhra Pradesh & Yanam; **with lightning** at isolated places over Tamil Nadu, Puducherry & Karaikal, Kerala & Mahe and South Interior Karnataka.
- ❖ **Hot and Humid Conditions** likely at isolated places over coastal Gujarat.

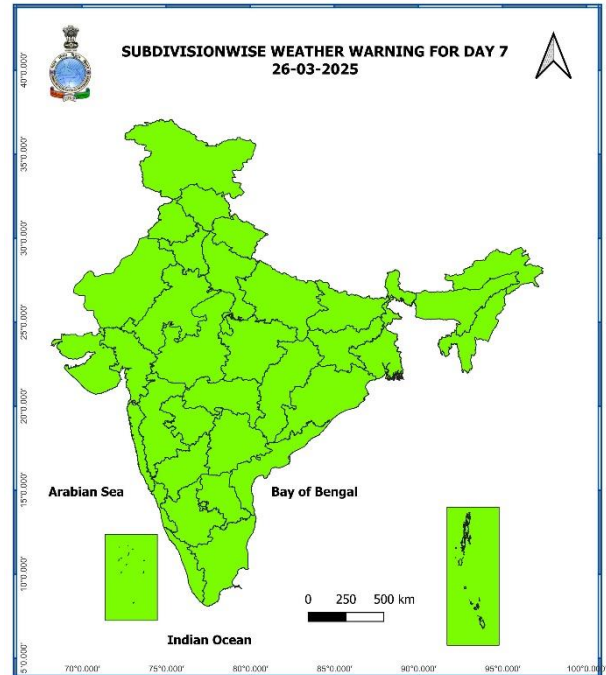
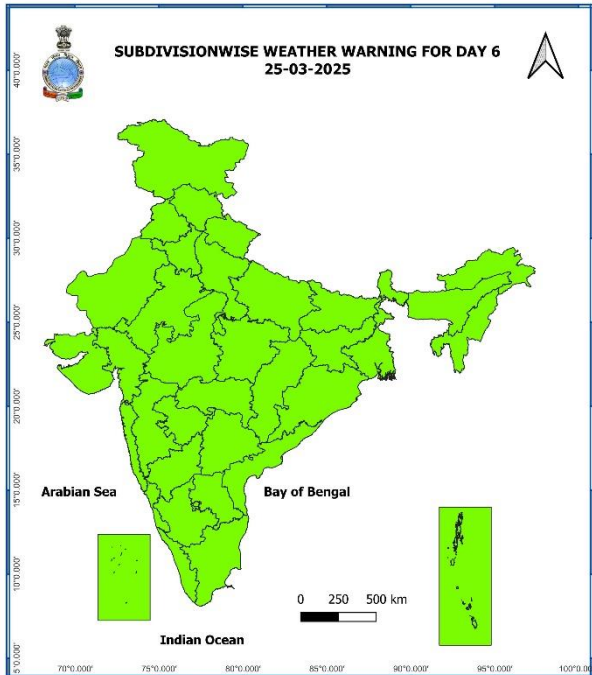
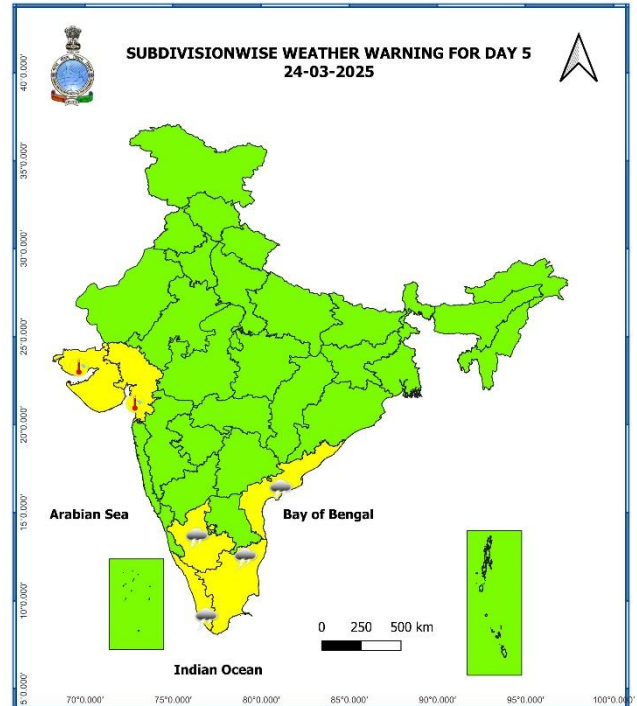
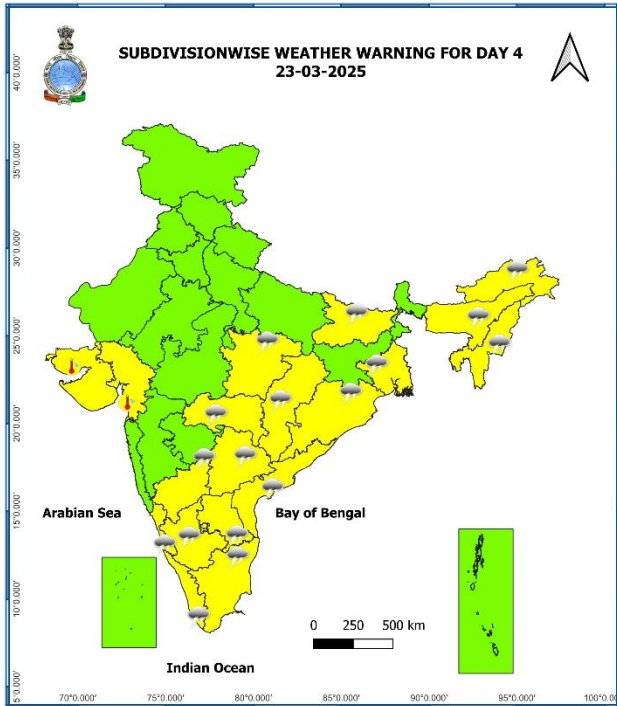
25th March (Day 6):

- ❖ **No Weather Warning.**

26th March (Day 7):

- ❖ **No Weather Warning.**





- Action may be taken based on **ORANGE AND RED** COLOUR warnings.
- Vulnerable regions likely urban and hilly areas action may be initiated for heavy rainfall warning.
- As the lead period increases forecast accuracy decreases.

Table-1

7 Days Rainfall Forecast								
S. No.	Subdivision	20-Mar	21-Mar	22-Mar	23-Mar	24-Mar	25-Mar	26-Mar
		Day 1	Day 2	Day 3	Day 4	Day 5	Day 6	Day 7
1	ANDAMAN & NICOBAR ISLANDS	SCT	ISOL	SCT	SCT	SCT	SCT	FWS
2	ARUNACHAL PRADESH	SCT	FWS	SCT	SCT	SCT	SCT	ISOL
3	ASSAM & MEGHALAYA	ISOL	FWS	FWS	SCT	ISOL	DRY	DRY
4	NAGALAND, MANIPUR, MIZORAM & TRIPURA	FWS	SCT	SCT	ISOL	ISOL	ISOL	ISOL
5	SUB-HIMALAYAN WEST BENGAL & SIKKIM	ISOL	ISOL	SCT	ISOL	DRY	DRY	DRY
6	GANGETIC WEST BENGAL	FWS	FWS	FWS	SCT	ISOL	DRY	DRY
7	ODISHA	ISOL	SCT	FWS	SCT	ISOL	DRY	DRY
8	JHARKHAND	SCT	FWS	FWS	ISOL	DRY	DRY	DRY
9	BIHAR	ISOL	ISOL	SCT	SCT	DRY	DRY	DRY
10	EAST UTTAR PRADESH	ISOL	ISOL	ISOL	DRY	DRY	DRY	DRY
11	WEST UTTAR PRADESH	ISOL	ISOL	DRY	DRY	DRY	DRY	DRY
12	UTTARAKHAND	ISOL	ISOL	DRY	DRY	DRY	DRY	ISOL
13	HARYANA CHANDIGARH & DELHI	ISOL	DRY	DRY	DRY	DRY	DRY	DRY
14	PUNJAB	ISOL	DRY	DRY	DRY	DRY	DRY	DRY
15	HIMACHAL PRADESH	ISOL	ISOL	DRY	DRY	DRY	DRY	ISOL
16	JAMMU & KASHMIR AND LADAKH	ISOL	ISOL	DRY	DRY	ISOL	ISOL	SCT
17	WEST RAJASTHAN	ISOL	DRY	DRY	DRY	DRY	DRY	DRY
18	EAST RAJASTHAN	ISOL	DRY	DRY	DRY	DRY	DRY	DRY
19	WEST MADHYA PRADESH	ISOL	ISOL	DRY	DRY	DRY	DRY	DRY
20	EAST MADHYA PRADESH	SCT	SCT	SCT	ISOL	DRY	DRY	DRY
21	GUJARAT REGION	DRY	DRY	DRY	DRY	DRY	DRY	DRY
22	SAURASHTRA & KUTCH	DRY	DRY	DRY	DRY	DRY	DRY	DRY
23	KONKAN & GOA	DRY	DRY	DRY	DRY	DRY	DRY	DRY
24	MADHYA MAHARASHTRA	ISOL	DRY	DRY	ISOL	ISOL	DRY	DRY
25	MARATHAWADA	ISOL	ISOL	ISOL	DRY	DRY	DRY	DRY
26	VIDARBHA	ISOL	SCT	SCT	ISOL	DRY	DRY	DRY
27	CHHATTISGARH	ISOL	SCT	SCT	ISOL	DRY	DRY	DRY
28	COASTAL ANDHRA PRADESH & YANAM	DRY	DRY	SCT	SCT	ISOL	DRY	DRY
29	TELANGANA	ISOL	ISOL	SCT	ISOL	DRY	DRY	DRY
30	RAYALASEEMA	DRY	DRY	ISOL	SCT	ISOL	DRY	DRY
31	TAMILNADU PUDUCHERRY & KARAIKAL	ISOL	ISOL	SCT	SCT	ISOL	ISOL	DRY
32	COASTAL KARNATAKA	ISOL	DRY	DRY	ISOL	ISOL	ISOL	ISOL
33	NORTH INTERIOR KARNATAKA	DRY	DRY	DRY	ISOL	ISOL	ISOL	DRY
34	SOUTH INTERIOR KARNATAKA	ISOL	DRY	DRY	ISOL	ISOL	ISOL	ISOL
35	KERALA & MAHE	ISOL	SCT	SCT	FWS	SCT	SCT	ISOL
36	LAKSHADWEEP	SCT	SCT	SCT	DRY	DRY	DRY	DRY

• As the lead period increases forecast accuracy decreases.

Impact expected and action suggested due to thunderstorm accompanied with lightning/gusty winds over Northeast, Central & East India during next 4 days; Kerala & Mahe & South Interior Karnataka during next 5 days.

❖ **Impact expected:**

- ❖ Strong wind may damage plantation, horticulture and standing crops.
- ❖ Partial damage to vulnerable structures due to strong winds.
- ❖ Minor damage to kutcha houses/walls and huts.
- ❖ Loose objects may fly.

❖ **Action suggested:**

- ❖ Stay indoors, close windows & doors and avoid travel if possible.
- ❖ Take safe shelters; do not take shelter under trees.
- ❖ Do not lie on concrete floors and do not lean against concrete walls.
- ❖ Unplug electrical/ electronic appliances.
- ❖ Immediately get out of water bodies.
- ❖ Keep away from all the objects that conduct electricity.

Agromet advisories for likely impact of Heavy Rainfall / Hailstorm

- ✓ In **Odisha**, apply light and frequent irrigation to the standing crops, vegetables and orchards in the evening to protect them from adverse impacts of high temperatures.
- ✓ To avoid the adverse impact of likely hailstorm, harvest the matured standing crops, vegetables and fruits and shift the harvested produce in safer places or cover the produce with tarpaulin sheets in the fields.
- ✓ Provide mechanical support to horticultural crops and staking to vegetables to avoid lodging.

Livestock

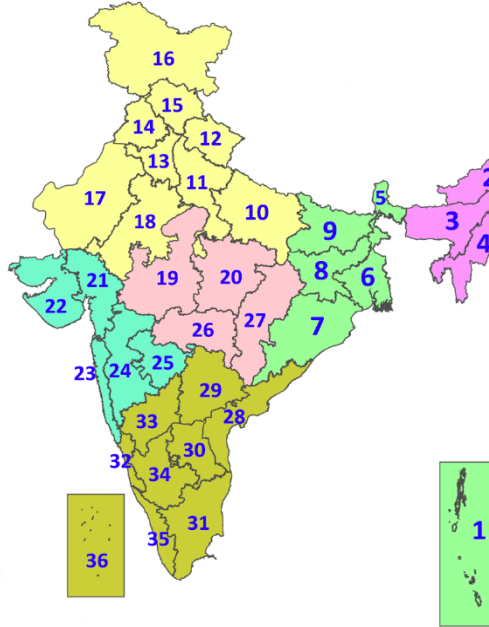
- ✓ Store feed and fodder in a safe place to prevent spoilage.
- ✓ To reduce the effect of heat wave/high temperature, cover the roof of poultry sheds with grass.
- ✓ Also provide clean, hygienic and plenty of drinking water to animals.

Legends & abbreviations:

- ❖ **Heavy Rain:**64.5-115.5mm; **Very Heavy Rain:**115.6-204.4mm; **Extremely Heavy Rain:** >204.4mm.
- ❖ **Obsy.:** Observatory; **AWS:** Automatic Weather Station; **ARG:** Automatic Rain Gauge; **dist.:** District; **NH:** National Highway; **KVK:** Krishi Vigyan Kendra; **DVC:** Damodar Valley Corporation; **PTO:** Part Time Office, **Aero:** Aerodrome, **IAF:** Indian Air Force.
- ❖ **Region wise classification of meteorological Sub-Divisions:**
 - **Northwest India:** Western Himalayan Region (Jammu-Kashmir-Ladakh-Gilgit-Baltistan-Muzaffarabad, Himachal Pradesh and Uttarakhand); Punjab, Haryana-Chandigarh-Delhi; West Uttar Pradesh, East Uttar Pradesh, West Rajasthan and East Rajasthan.
 - **Central India:** West Madhya Pradesh, East Madhya Pradesh, Vidarbha and Chhattisgarh.
 - **East India:** Bihar, Jharkhand, Sub-Himalayan West Bengal & Sikkim; Gangetic West Bengal, Odisha and Andaman & Nicobar Islands.
 - **Northeast India:** Arunachal Pradesh, Assam & Meghalaya and Nagaland, Manipur, Mizoram & Tripura.
 - **West India:** Gujarat Region, Saurashtra & Kutch, Konkan & Goa, Madhya Maharashtra and Marathawada.
 - **South India:** Coastal Andhra Pradesh & Yanam, Telangana, Rayalaseema, Coastal Karnataka, North Interior Karnataka, South Interior Karnataka, Kerala & Mahe, Tamil Nadu, Puducherry & Karaikal and Lakshadweep.

LEGENDS

1. अंडमान और निकोबार द्वीपसमूह
2. अरुणाचल प्रदेश
3. असम और मेघालय
4. नागालैंड, मणिपुर, मिजोरम और त्रिपुरा
5. उप-हिमालयी पश्चिम बंगाल और सिक्किम
6. गंगीय पश्चिम बंगाल
7. ओडिशा
8. झारखंड
9. बिहार
10. पूर्वी उत्तर प्रदेश
11. पश्चिम उत्तर प्रदेश
12. उत्तराखंड
13. हरियाणा, चंडीगढ़ और दिल्ली
14. पंजाब
15. हिमाचल प्रदेश
16. जम्मू और कश्मीर और लद्दाख
17. पश्चिम राजस्थान
18. पूर्वी राजस्थान
19. पश्चिम मध्य प्रदेश
20. पूर्वी मध्य प्रदेश
21. गुजरात
22. सौराष्ट्र
23. कोंकण और गोवा
24. मध्य महाराष्ट्र
25. मराठवाड़ा
26. विदर्भ
27. छत्तीसगढ़
28. तटीय आंध्र प्रदेश और यनम
29. तेलंगाना
30. रायलसीमा
31. तमिलनाडु, पुडुचेरी और कराईकल
32. तटीय कर्नाटक
33. आंतरिक उत्तरी कर्नाटक
34. आंतरिक दक्षिणी कर्नाटक
35. केरल और माहे
36. लक्षद्वीप



1. Andaman & Nicobar Islands
2. Arunachal Pradesh
3. Assam & Meghalaya
4. Nagaland, Manipur, Mizoram & Tripura
5. Sub-Himalayan West Bengal & Sikkim
6. Gangetic West Bengal
7. Odisha
8. Jharkhand
9. Bihar
10. East Uttar Pradesh
11. West Uttar Pradesh
12. Uttarakhand
13. Haryana, Chandigarh & Delhi
14. Punjab
15. Himachal Pradesh
16. Jammu & Kashmir and Ladakh
17. West Rajasthan
18. East Rajasthan
19. West Madhya Pradesh
20. East Madhya Pradesh
21. Gujarat
22. Saurashtra
23. Konkan & Goa
24. Madhya Maharashtra
25. Marathwada
26. Vidarbha
27. Chhattisgarh
28. Coastal Andhra Pradesh & Yanam
29. Telangana
30. Rayalaseema
31. Tamilnadu, Puducherry & Karaikal
32. Coastal Karnataka
33. North Interior Karnataka
34. South Interior Karnataka
35. Kerala & Mahe
36. Lakshadweep

SPATIAL DISTRIBUTION (% of Stations reporting)

% Stations	Category	% Stations	Category
76-100	Widespread (WS/Most Places)	26-50	Scattered (SCT/A Few Places)
51-75	Fairly Widespread (FWS/Many Places)	1-25	Isolated (ISOL)



Fog



Heavy Rain



Very Heavy Rain



Extremely Heavy Rain



Thunder & Lightning



Hailstorm



Dust Raising Winds



Heavy Snow



Dust Storm



Heat Wave



Warm Night



Hot Day



Hot & Humid



Strong Surface Winds



Cold Wave



Cold Day



Ground Frost

COLOUR CODED WARNING

No Warning (No Action)
Watch (Be Aware)
Alert (Be Prepared To Take Action)
Warning (Take Action)

Probabilistic Forecast

Terms	Probability of Occurrence (%)
Unlikely	< 25
Likely	25 - 50
Very Likely	50 - 75
Most Likely	> 75

* Red colour warning does not mean "Red Alert", Red colour warning means "Take Action".
Forecast and Warning for any day is valid from 0830 hours IST of day till 0830 hours IST of next day.
For more details, kindly visit <https://mausam.imd.gov.in> or contact: 011-2434-4599
(Service to the Nation since 1875)

DEFINITION/CRITERIA

Rain/ Snow *

Heavy: 64.5 to 115.5 mm/cm *

Very Heavy: 115.6 to 204.4 mm/cm *

Extremely Heavy: > 204.4 mm/cm *

Heat Wave

When maximum temperature of a station reaches $\geq 40^\circ \text{C}$ for plains and $\geq 30^\circ \text{C}$ for hilly regions

(a) Based on Departure from normal

Heat Wave: Maximum Temperature Departure from normal 4.5°C to 6.4°C .

Severe Heat Wave: Maximum Temperature Departure from normal $\geq 6.5^\circ \text{C}$

(b). Based on Actual maximum temperature

Heat Wave: When actual maximum temperature $\geq 45^\circ \text{C}$.

Severe Heat Wave: When actual maximum temperature $\geq 47^\circ \text{C}$

(c). Criteria for heat wave for coastal stations

When maximum temperature departure is $> 4.5^\circ \text{C}$ from normal. Heat Wave may be described provided maximum temperature $\geq 37^\circ \text{C}$

Warm Night

When maximum temperature remains 40°C

Warm Night: When minimum temperature departure 4.5°C to 6.4°C .

Severe Warm Night: When minimum temperature departure $> 6.4^\circ \text{C}$.

Cold Wave

When minimum temperature of a station $\leq 10^\circ \text{C}$ for plains and $\leq 0^\circ \text{C}$ for hilly regions.

(a). Based on departure

Cold Wave: Minimum Temperature Departure from normal -4.5°C to -6.4°C .

Severe Cold Wave: Minimum Temperature Departure from normal $\leq -6.5^\circ \text{C}$

(b) Based on actual Minimum Temperature (for Plains only)

Cold Wave : When Minimum Temperature is $\leq 4.0^\circ \text{C}$

Severe Cold Wave: When Minimum Temperature is $\leq 2.0^\circ \text{C}$

(c) For Coastal Stations

When Minimum Temperature departure is $\leq -4.5^\circ \text{C}$ & actual Minimum Temperature is $\leq 15^\circ \text{C}$

Cold Day

When minimum temperature of a station $\leq 10^\circ \text{C}$ for plains and $\leq 0^\circ \text{C}$ for hilly regions

Based on departure

Cold Day: Maximum Temperature Departure from normal -4.5°C to -6.4°C .

Severe Cold Day: Maximum Temperature Departure from normal $\leq -6.5^\circ \text{C}$

Fog

Phenomenon of small droplets suspended in air and the horizontal visibility $< 1 \text{ km}$

Moderate Fog: When the visibility between 500-200 metres

Dense Fog: when the visibility between 50- 200 metres

Very Dense Fog: when the visibility < 50 metres

Thunderstorm

Sudden electrical discharges manifested by a flash of light (Lightning) and a sharp rumbling sound (thunder)

Dust/Sand Storm

An ensemble of particles of dust or sand energetically lifted to great heights by a strong and turbulent wind.

Frost

Ice deposits on ground

Air temperature $\leq 4^\circ \text{C}$ (over Plains)

Squall

A strong wind that rises suddenly, lasts for atleast 1 minute.

Moderate: Wind speed 52-61 kmph

Severe: Wind speed 62-87 kmph

Very Severe: Wind speed > 87 kmph

Sea State

Effect of various waves in the sea over specific area

Rough to very rough: Wind speed 41-62 kmph (22-33 knots) & Wave height 2.5-6 metre

High to very high: Wind speed 63-117 kmph (34-63 knots) & Wave height 6-14 metre

Phenomenal: Wind speed > 117 kmph (> 63 knots) & Wave height > 14 metre

Cyclone

Cyclonic Storm: Wind speed 62-87 kmph (34-47 knots)

Severe Cyclonic Storm: Wind speed 88-117 kmph (48-63 knots)

Very Severe Cyclonic Storm: Wind speed 118-165 kmph (64 - 89 knots)

Extremely Severe Cyclonic Storm: Wind speed 166-220 kmph (90 -119 knots)

Super Cyclone Strom: Wind speed > 220 kmph (> 119 knots)

* Red colour warning does not mean "Red Alert", Red colour warning means "Take Action".

Forecast and Warning for any day is valid from 0830 hours IST of day till 0830 hours IST of next day.

For more details, kindly visit <https://mausam.imd.gov.in> or contact: 011-2434-4599

(Service to the Nation since 1875)