

Thursday, April 10, 2025  
Time of Issue: 0800 hours IST  
(MORNING)All India Impact Based Weather Warning Bulletin**Weather Warnings for next 7 days is given below:****(Graphics for warnings & rainfall distribution (Table 1) are given below the text:****10<sup>th</sup> April (Day 1):**

- ❖ **Heavy rainfall** very likely at isolated places over Arunachal Pradesh, Assam & Meghalaya, Bihar, Sub-Himalayan West Bengal & Sikkim, Tamil Nadu and Kerala.
- ❖ **Thundersquall accompanied with lightning, gusty winds (speed reaching 50 - 60 kmph) & hailstorm** very likely at isolated places over Uttarakhand; **Thunderstorm accompanied with lightning, gusty winds (speed reaching 40 - 50 kmph) & hailstorm** at isolated places over Jharkhand; **with lightning & gusty winds (speed reaching 30 - 40 kmph) & hailstorm** at isolated places over Himachal Pradesh; **with lightning & gusty winds (speed reaching 40 - 50 kmph)** at isolated places over Rajasthan, Vidarbha, West Bengal & Sikkim, Bihar, Odisha, Assam & Meghalaya, Nagaland, Manipur, Mizoram & Tripura, Coastal Andhra Pradesh & Yanam and North Interior Karnataka; **with lightning & gusty winds (speed reaching 30 - 40 kmph)** at isolated places over Punjab, Haryana-Chandigarh-Delhi, Uttar Pradesh, Madhya Pradesh, Chhattisgarh, Kerala & Mahe, Rayalaseema, Telangana, Coastal Karnataka & South Interior Karnataka; **with lightning** at isolated places over Arunachal Pradesh.
- ❖ **Duststorm** very likely at isolated places over Rajasthan.
- ❖ **Heat wave conditions** very likely in isolated pockets over Rajasthan, Madhya Pradesh and Gujarat state.
- ❖ **Warm night conditions** very likely to prevail in isolated pockets over Rajasthan and Madhya Pradesh.
- ❖ **Squally weather with wind speed 35 kmph to 45 kmph gusting to 55 kmph** very likely to prevail over central parts of central bay of Bengal and adjoining areas, over gulf of Mannar; adjoining Comorin area, along and off south Tamil Nadu coast, over southern parts of southwest bay of Bengal, along and off south Sri Lanka coast. **Squally wind with wind speed 45 kmph to 50 kmph gusting to 55 kmph** to prevail along and off Gujarat and adjoining north Maharashtra coasts. Fishermen are advised not to venture into these areas.

**11<sup>th</sup> April (Day 2):**

- ❖ **Heavy rainfall** very likely at isolated places over Assam & Meghalaya and Sub-Himalayan West Bengal & Sikkim.
- ❖ **Thundersquall accompanied with lightning, gusty winds (speed reaching 50 - 60 kmph)** very likely at isolated places over Uttarakhand; **Thunderstorm accompanied with lightning & gusty winds (speed reaching 40 - 50 kmph)** at isolated places over Punjab, Haryana-Chandigarh-Delhi, Uttar Pradesh, Rajasthan, Vidarbha, West Bengal & Sikkim, Bihar, Assam & Meghalaya, Coastal Andhra Pradesh & Yanam, Rayalaseema, North Interior Karnataka; **with lightning & gusty winds (speed reaching 30 - 40 kmph)** at isolated places over Himachal Pradesh, Chhattisgarh, Jharkhand, Odisha, Nagaland, Manipur, Mizoram & Tripura, Kerala & Mahe, Coastal Karnataka & South Interior Karnataka; **with lightning** at isolated places over Arunachal Pradesh and Tamil Nadu, Puducherry & Karaikal.
- ❖ **Duststorm** very likely at isolated places over Rajasthan.
- ❖ **Squally weather with wind speed 35 kmph to 45 kmph gusting to 55 kmph** very likely to prevail over gulf of Mannar; adjoining Comorin area, along and off Tamil Nadu coast, along and off Sri Lanka coast and adjoining southwest bay of Bengal. **Squally wind with wind speed 45 kmph to 50 kmph gusting to 55 kmph** to prevail along and off Gujarat and adjoining north Maharashtra coasts, along and off Oman coast and adjoining westcentral and northwest Arabian sea. Fishermen are advised not to venture into these areas.

### 12<sup>th</sup> April (Day 3):

- ❖ **Thunderstorm accompanied with lightning & gusty winds (speed reaching 40 - 50 kmph)** likely at isolated places over Uttar Pradesh, West Bengal & Sikkim, Jharkhand, Coastal Andhra Pradesh & Yanam and Rayalaseema; **with lightning & gusty winds (speed reaching 30 - 40 kmph)** at isolated places over Uttarakhand, Chhattisgarh, Bihar, Odisha, Assam & Meghalaya, Kerala & Mahe; **with lightning** at isolated places over Arunachal Pradesh, Nagaland, Manipur, Mizoram & Tripura and Tamil Nadu, Puducherry & Karaikal.
- ❖ **Squally weather with wind speed 35 kmph to 45 kmph gusting to 55 kmph** likely to prevail over gulf of Mannar; adjoining Comorin area, along and off Tamil Nadu coast. **Squally wind with wind speed 45 kmph to 50 kmph gusting to 55 kmph** to prevail along and off Oman coast and adjoining westcentral and northwest Arabian sea. Fishermen are advised not to venture into these areas.

### 13<sup>th</sup> April (Day 4):

- ❖ **Thunderstorm accompanied with lightning & gusty winds (speed reaching 40 - 50 kmph)** likely at isolated places over Gangetic West Bengal and Jharkhand; **with lightning & gusty winds (speed reaching 30 - 40 kmph)** at isolated places over Chhattisgarh, Bihar, Assam & Meghalaya, Coastal Andhra Pradesh & Yanam; **with lightning** at isolated places over Arunachal Pradesh, Nagaland, Manipur, Mizoram & Tripura and Kerala & Mahe.
- ❖ **Squally weather with wind speed 35 kmph to 45 kmph gusting to 55 kmph** likely to prevail over Gulf of Mannar; adjoining Comorin area. Fishermen are advised not to venture into these areas.

### 14<sup>th</sup> April (Day 5):

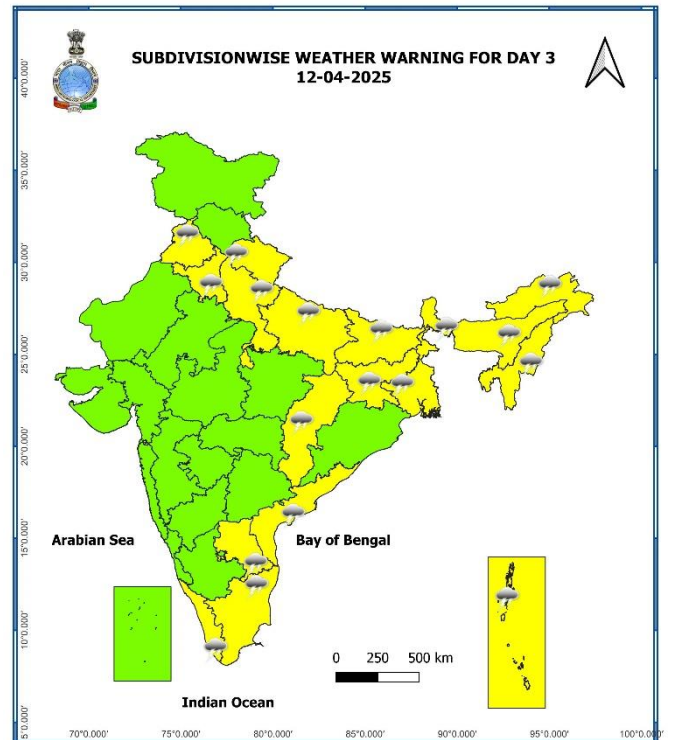
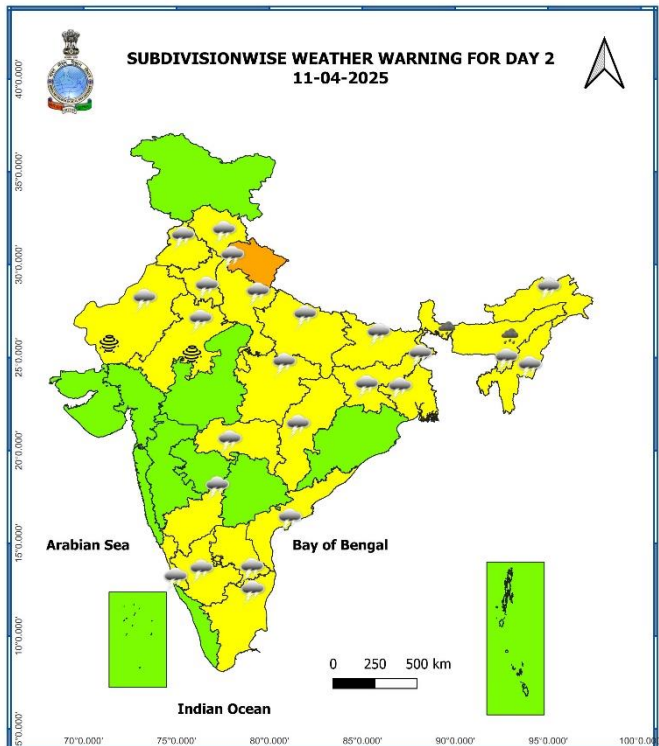
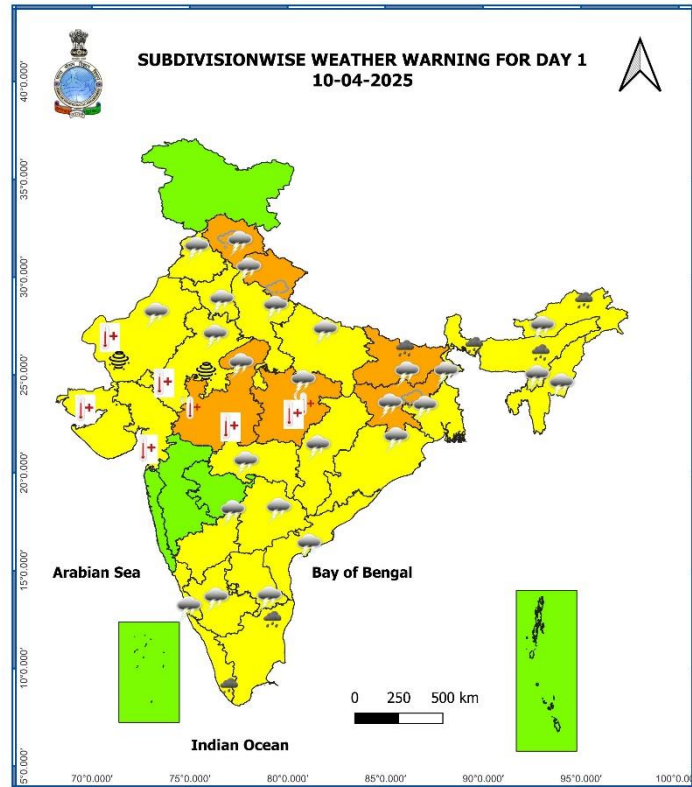
- ❖ **Heat wave conditions** likely in isolated pockets over West Rajasthan.

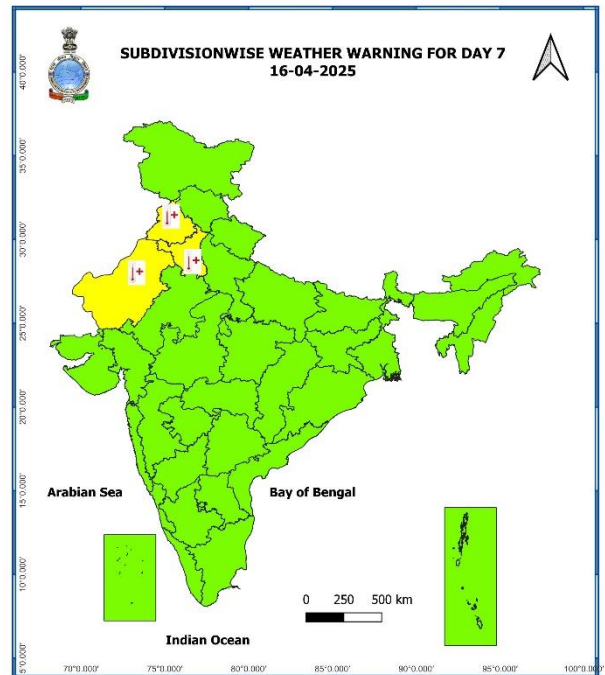
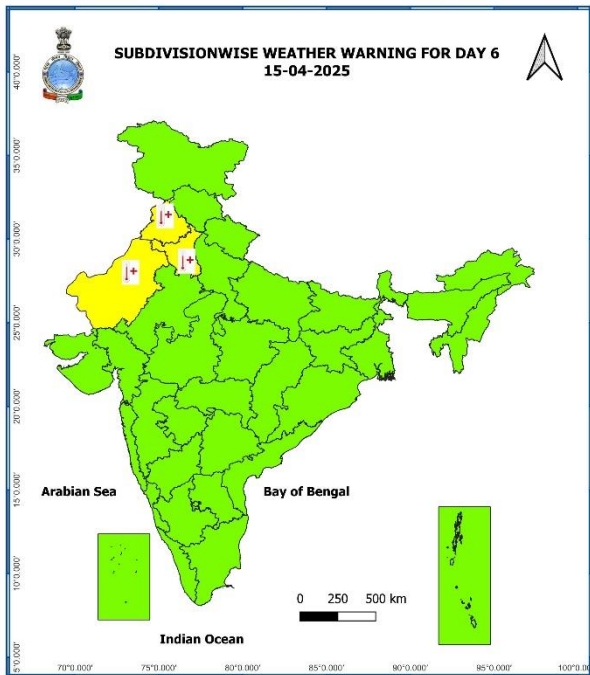
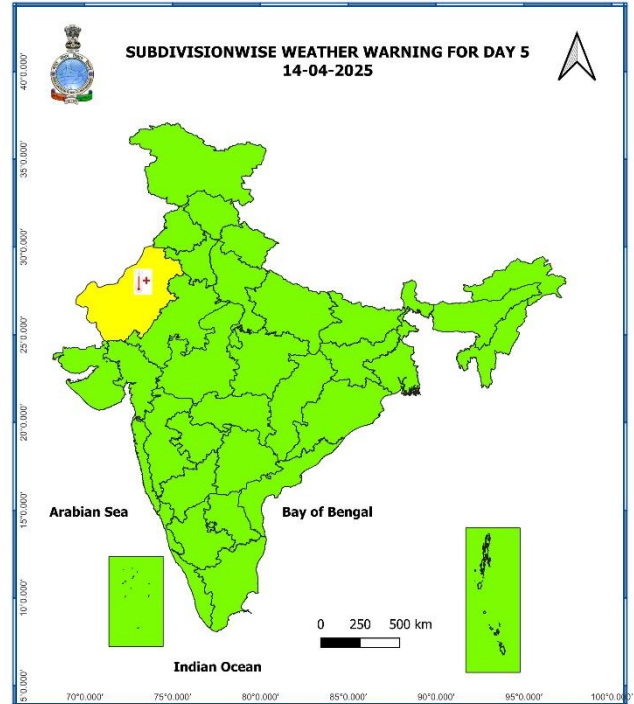
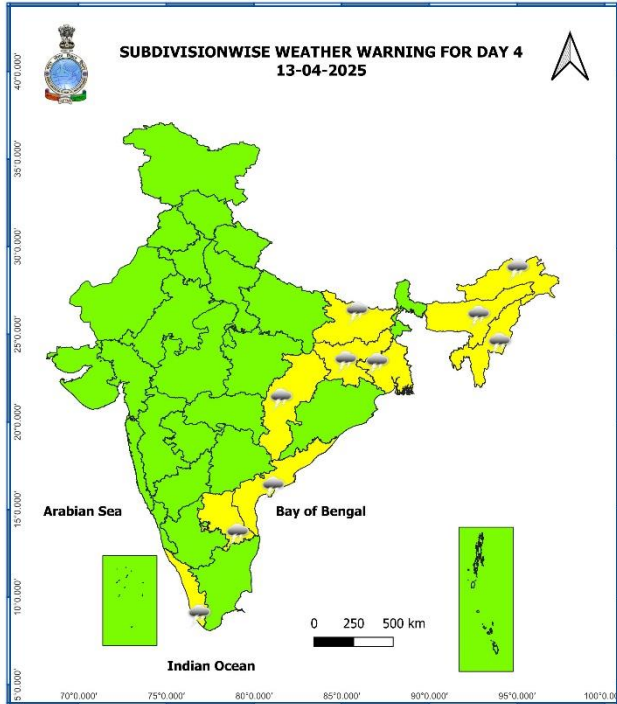
### 15<sup>th</sup> April (Day 6):

- ❖ **Heat wave conditions** likely in isolated pockets over Punjab, Haryana, Delhi and West Rajasthan.

### 16<sup>th</sup> April (Day 7):

- ❖ **Heat wave conditions** likely in isolated pockets over Punjab, Haryana, Delhi and West Rajasthan.





- Action may be taken based on **ORANGE AND RED** COLOUR warnings.
- Vulnerable regions likely urban and hilly areas action may be initiated for heavy rainfall warning.
- As the lead period increases forecast accuracy decreases.



Table-1

7 Days Rainfall Forecast

S. No.	Subdivision	10-Apr	11-Apr	12-Apr	13-Apr	14-Apr	15-Apr	16-Apr
		Day 1	Day 2	Day 3	Day 4	Day 5	Day 6	Day 7
1	ANDAMAN & NICOBAR ISLANDS	FWS	FWS	FWS	SCT	SCT	SCT	SCT
2	ARUNACHAL PRADESH	SCT	FWS	FWS	SCT	SCT	ISOL	ISOL
3	ASSAM & MEGHALAYA	WS	WS	WS	WS	FWS	FWS	FWS
4	NAGALAND, MANIPUR, MIZORAM & TRIPURA	SCT	FWS	FWS	SCT	SCT	ISOL	ISOL
5	SUB-HIMALAYAN WEST BENGAL & SIKKIM	FWS	FWS	FWS	FWS	SCT	ISOL	ISOL
6	GANGETIC WEST BENGAL	SCT	SCT	SCT	SCT	SCT	ISOL	ISOL
7	ODISHA	SCT	ISOL	ISOL	ISOL	ISOL	ISOL	ISOL
8	JHARKHAND	SCT	ISOL	SCT	SCT	SCT	ISOL	ISOL
9	BIHAR	SCT	SCT	SCT	ISOL	ISOL	ISOL	ISOL
10	EAST UTTAR PRADESH	ISOL	SCT	SCT	ISOL	DRY	DRY	DRY
11	WEST UTTAR PRADESH	ISOL	ISOL	ISOL	DRY	DRY	DRY	DRY
12	UTTARAKHAND	FWS	FWS	SCT	DRY	DRY	DRY	DRY
13	HARYANA CHANDIGARH & DELHI	ISOL	ISOL	DRY	DRY	DRY	DRY	DRY
14	PUNJAB	ISOL	ISOL	DRY	DRY	DRY	DRY	DRY
15	HIMACHAL PRADESH	SCT	FWS	ISOL	DRY	DRY	DRY	DRY
16	JAMMU & KASHMIR AND LADAKH	SCT	ISOL	DRY	DRY	DRY	DRY	DRY
17	WEST RAJASTHAN	ISOL	ISOL	DRY	DRY	DRY	DRY	DRY
18	EAST RAJASTHAN	ISOL	ISOL	ISOL	DRY	DRY	DRY	DRY
19	WEST MADHYA PRADESH	ISOL	ISOL	ISOL	DRY	DRY	DRY	DRY
20	EAST MADHYA PRADESH	ISOL	ISOL	ISOL	DRY	DRY	DRY	DRY
21	GUJARAT REGION	DRY	DRY	DRY	DRY	DRY	DRY	DRY
22	SAURASHTRA & KUTCH	DRY	DRY	DRY	DRY	DRY	DRY	DRY
23	KONKAN & GOA	DRY	DRY	DRY	DRY	DRY	DRY	DRY
24	MADHYA MAHARASHTRA	DRY	DRY	DRY	DRY	DRY	DRY	DRY
25	MARATHAWADA	ISOL	DRY	ISOL	DRY	DRY	DRY	DRY
26	VIDARBHA	ISOL	ISOL	ISOL	DRY	DRY	DRY	DRY
27	CHHATTISGARH	ISOL	ISOL	ISOL	ISOL	ISOL	ISOL	ISOL
28	COASTAL ANDHRA PRADESH & YANAM	ISOL	SCT	SCT	SCT	SCT	ISOL	ISOL
29	TELANGANA	ISOL	ISOL	ISOL	ISOL	ISOL	ISOL	ISOL
30	RAYALASEEMA	ISOL	SCT	SCT	ISOL	ISOL	ISOL	ISOL
31	TAMILNADU PUDUCHERRY & KARAIKAL	ISOL	ISOL	ISOL	ISOL	ISOL	ISOL	ISOL
32	COASTAL KARNATAKA	ISOL	ISOL	ISOL	ISOL	ISOL	ISOL	ISOL
33	NORTH INTERIOR KARNATAKA	ISOL	ISOL	ISOL	ISOL	ISOL	ISOL	ISOL
34	SOUTH INTERIOR KARNATAKA	ISOL	ISOL	ISOL	ISOL	ISOL	ISOL	ISOL
35	KERALA & MAHE	SCT	SCT	FWS	FWS	FWS	FWS	FWS
36	LAKSHADWEEP	SCT	SCT	DRY	DRY	DRY	DRY	DRY

• As the lead period increases forecast accuracy decreases.

**Impact expected and action suggested due to Heat wave conditions likely in isolated pockets of Rajasthan, Gujarat state and Madhya Pradesh on 10<sup>th</sup> April.**

**Red alert Areas**

- Very high likelihood of developing heat illness and heat stroke in all ages.
- Extreme care needed for vulnerable people.

**Orange alert Areas**

- High temperature & increased likelihood of heat illness symptoms in people who are either exposed to sun for a prolonged period or doing heavy work.
- High health concern for vulnerable people e.g. infants, elderly, people with chronic diseases.
- Avoid heat exposure- keep cool. Avoid dehydration.
- Drink sufficient water- even if not thirsty.
- Use ORS, homemade drinks like lassi, torani (rice water), lemon water, buttermilk, etc. to keep yourself hydrated.

**Yellow alert Areas**

- Moderate temperature & heat is tolerable for general public but moderate health concern likely for vulnerable people e.g. infants, elderly, people with chronic diseases.
- Avoid heat exposure.
- Wear lightweight, light colour, loose, cotton clothes.
- Cover your head, use a cloth, hat or umbrella.

**Impact expected and action suggested due to isolated thunderstorm with lightning/gusty winds & Hailstorm over Himachal Pradesh, Jharkhand on 10<sup>th</sup>; Uttarakhand during 10<sup>th</sup>-11<sup>th</sup> April.**

**Impact expected:**

- Strong wind/hail may damage plantation, horticulture and standing crops.
- Hail may injure people and cattle at open places.
- Partial damage to vulnerable structures due to strong winds.
- Minor damage to kutcha houses/walls and huts.
- Loose objects may fly.

**Action suggested:**

- Stay indoors, close windows & doors and avoid travel if possible.
- Take safe shelters; do not take shelter under trees.
- Do not lie on concrete floors and do not lean against concrete walls.
- Unplug electrical/ electronic appliances.
- Immediately get out of water bodies.
- Keep away from all the objects that conduct electricity.

### DEFINITION/CRITERIA

#### Rain/ Snow \*

Heavy: 64.5 to 115.5 mm/cm \*

Very Heavy: 115.6 to 204.4 mm/cm \*

Extremely Heavy: > 204.4 mm/cm \*

#### Heat Wave

When maximum temperature of a station reaches  $\geq 40^{\circ}\text{C}$  for plains and  $\geq 30^{\circ}\text{C}$  for hilly regions

(a) Based on Departure from normal

Heat Wave: Maximum Temperature Departure from normal  $4.5^{\circ}\text{C}$  to  $6.4^{\circ}\text{C}$ .

Severe Heat Wave: Maximum Temperature Departure from normal  $\geq 6.5^{\circ}\text{C}$

(b). Based on Actual maximum temperature

Heat Wave: When actual maximum temperature  $\geq 45^{\circ}\text{C}$ .

Severe Heat Wave: When actual maximum temperature  $\geq 47^{\circ}\text{C}$

(c). Criteria for heat wave for coastal stations

When maximum temperature departure is  $> 4.5^{\circ}\text{C}$  from normal. Heat Wave may be described provided maximum temperature  $\geq 37^{\circ}\text{C}$

#### Warm Night

When maximum temperature remains  $40^{\circ}\text{C}$

Warm Night: When minimum temperature departure  $4.5^{\circ}\text{C}$  to  $6.4^{\circ}\text{C}$ .

Severe Warm Night: When minimum temperature departure  $> 6.4^{\circ}\text{C}$ .

#### Cold Wave

When minimum temperature of a station  $\leq 10^{\circ}\text{C}$  for plains and  $\leq 0^{\circ}\text{C}$  for hilly regions.

(a). Based on departure

Cold Wave: Minimum Temperature Departure from normal  $-4.5^{\circ}\text{C}$  to  $-6.4^{\circ}\text{C}$ .

Severe Cold Wave: Minimum Temperature Departure from normal  $\leq -6.5^{\circ}\text{C}$

(b) Based on actual Minimum Temperature (for Plains only)

Cold Wave : When Minimum Temperature is  $\leq 4.0^{\circ}\text{C}$

Severe Cold Wave: When Minimum Temperature is  $\leq 2.0^{\circ}\text{C}$

(c) For Coastal Stations

When Minimum Temperature departure is  $\leq -4.5^{\circ}\text{C}$  & actual Minimum Temperature is  $\leq 15^{\circ}\text{C}$

#### Cold Day

When minimum temperature of a station  $\leq 10^{\circ}\text{C}$  for plains and  $\leq 0^{\circ}\text{C}$  for hilly regions

Based on departure

Cold Day: Maximum Temperature Departure from normal  $-4.5^{\circ}\text{C}$  to  $-6.4^{\circ}\text{C}$ .

Severe Cold Day: Maximum Temperature Departure from normal  $\leq -6.5^{\circ}\text{C}$

#### Fog

Phenomenon of small droplets suspended in air and the horizontal visibility  $< 1\text{km}$

Moderate Fog: When the visibility between 500-200 metres

Dense Fog: when the visibility between 50- 200 metres

Very Dense Fog: when the visibility  $< 50$  metres

#### Thunderstorm

Sudden electrical discharges manifested by a flash of light (Lightning) and a sharp rumbling sound (thunder)

#### Dust/Sand Storm

An ensemble of particles of dust or sand energetically lifted to great heights by a strong and turbulent wind.

#### Frost

Ice deposits on ground

Air temperature  $\leq 4^{\circ}\text{C}$  ( over Plains)

#### Squall

A strong wind that rises suddenly, lasts for atleast 1 minute.

Moderate: Wind speed 52-61 kmph

Severe: Wind speed 62-87 kmph

Very Severe: Wind speed  $> 87$  kmph

#### Sea State

Effect of various waves in the sea over specific area

Rough to very rough: Wind speed 41-62 kmph (22-33 knots) & Wave height 2.5-6 metre

High to very high: Wind speed 63-117 kmph ( 34-63 knots) & Wave height 6-14 metre

Phenomenal: Wind speed  $> 117$  kmph ( $> 63$  knots) & Wave height  $> 14$  metre

#### Cyclone

Cyclonic Storm: Wind speed 62-87 kmph (34-47 knots)

Severe Cyclonic Storm: Wind speed 88-117 kmph (48-63 knots)

Very Severe Cyclonic Storm: Wind speed 118-165 kmph (64 - 89 knots)

Extremely Severe Cyclonic Storm: Wind speed 166-220 kmph (90 -119 knots)

Super Cyclone Storm: Wind speed  $> 220$  kmph ( $> 119$  knots)

\* Red colour warning does not mean "Red Alert", Red colour warning means "Take Action".  
Forecast and Warning for any day is valid from 0830 hours IST of day till 0830 hours IST of next day.  
For more details, kindly visit <https://mausam.imd.gov.in> or contact: 011-2434-4599  
(Service to the Nation since 1875)

**Hot and Humid:** When maximum temperatures remains  $3^{\circ}\text{C}$  above normal along with the above normal relative humidity.