

Friday, April 11, 2025
Time of Issue: 2000 hours IST
(NIGHT)

All India Impact Based Weather Warning Bulletin

Weather Warnings for next 7 days is given below:

(Graphics for warnings & rainfall distribution (Table 1) are given below the text:

11th April (Day 1):

- ❖ **Heavy rainfall** very likely at isolated places over Sub-Himalayan West Bengal & Sikkim, Bihar, Arunachal Pradesh, Assam & Meghalaya and Kerala & Mahe.
- ❖ **Thundersquall accompanied with lightning, gusty Winds (speed reaching 50 - 60 kmph) & hailstorm** very likely at isolated places over Punjab, Haryana-Chandigarh-Delhi, East Madhya Pradesh; **Thundersquall accompanied with lightning, gusty Winds (speed reaching 50 - 60 kmph)** at isolated places over West Madhya Pradesh, Coastal Andhra Pradesh & Yanam, Odisha; **Thunderstorm accompanied with lightning, gusty Winds (speed reaching 40 - 50 kmph) & hailstorm** at isolated places over Himachal Pradesh, Uttarakhand, Chhattisgarh; **with lightning & gusty Winds (speed reaching 30 - 40 kmph) & hailstorm** at isolated places over Jammu-Kashmir-Ladakh-Gilgit-Baltistan-Muzaffarabad; **with lightning & gusty Winds (speed reaching 40 - 50 kmph)** at isolated places over West Uttar Pradesh, Vidarbha, West Bengal & Sikkim, Bihar, Jharkhand, Rayalaseema, Assam & Meghalaya, Interior Karnataka, **with lightning & gusty Winds (speed reaching 30 - 40 kmph)** at isolated places over Nagaland, Manipur, Mizoram & Tripura, Konkan & Goa, Madhya Maharashtra, Kerala & Mahe, Telangana, Coastal Karnataka, East Uttar Pradesh; **with lightning** at isolated places over Tamil Nadu, Puducherry & Karaikal, Lakshadweep and Arunachal Pradesh.
- ❖ **Duststorm** very likely at isolated places over Rajasthan.
- ❖ **Hot & humid weather** very likely at isolated places over Tamil Nadu, Puducherry & Karaikal.
- ❖ **Squally weather with Wind speed 35 kmph to 45 kmph gusting to 55 kmph** likely to prevail Lakshadweep area, over many parts of eastcentral Bay of Bengal and adjoining northern parts of southeast Bay of Bengal, off north Andhra Pradesh coast and adjoining westcentral Bay of Bengal, over gulf of Mannar and adjoining Comorin area, along and off Tamil Nadu coast, along and off Sri Lanka coast and adjoining southwest Bay of Bengal. Fishermen are advised not to venture into these areas.

12th April (Day 2):

- ❖ **Heavy rainfall** very likely at isolated places over Sub-Himalayan West Bengal & Sikkim, Arunachal Pradesh and Assam & Meghalaya.
- ❖ **Thundersquall accompanied with lightning, gusty Winds (speed reaching 50 - 60 kmph) & hailstorm** very likely at isolated places over East Madhya Pradesh; **Thundersquall accompanied with lightning, gusty Winds (speed reaching 50 - 60 kmph)** at isolated places over East Rajasthan, Jharkhand; **Thunderstorm accompanied with lightning, gusty Winds (speed reaching 40 - 50 kmph) & hailstorm** at isolated places over Uttar Pradesh; **with lightning & gusty Winds (speed reaching 30 - 40 kmph) & hailstorm** at isolated places over Uttarakhand; **with lightning & gusty Winds (speed reaching 40 - 50 kmph)** at isolated places over West Madhya Pradesh, Gangetic West Bengal, Nagaland, Manipur, Mizoram & Tripura, Assam & Meghalaya, Coastal Andhra Pradesh & Yanam, Rayalaseema, Interior Karnataka, **with lightning & gusty Winds (speed reaching 30 - 40 kmph)** at isolated places over Vidarbha, Chhattisgarh, Odisha, Marathwada, Kerala & Mahe, Coastal Karnataka, Telangana; **with lightning** at isolated places over Himachal Pradesh, Tamil Nadu, Puducherry & Karaikal and Arunachal Pradesh.
- ❖ **Duststorm** very likely at isolated places over Rajasthan.
- ❖ **Hot & humid weather** very likely at isolated places over Tamil Nadu, Puducherry & Karaikal.
- ❖ **Squally weather with wind speed 35 kmph to 45 kmph gusting to 55 kmph** likely to prevail over Gulf of Mannar & adjoining Comorin area along & off Tamil Nadu coast. Fishermen are advised not to venture into these areas.

13th April (Day 3):

- ❖ **Heavy rainfall** very likely at isolated places over Assam & Meghalaya.
- ❖ **Thundersquall accompanied with lightning, gusty winds (speed reaching 50 - 60 kmph)** very likely at isolated places over Gangetic West Bengal; **Thunderstorm accompanied with lightning, gusty winds (speed reaching 40 - 50 kmph)** at isolated places over East Madhya Pradesh, Sub-Himalayan West Bengal & Sikkim, Bihar, Nagaland, Manipur, Mizoram & Tripura, Assam & Meghalaya; **with lightning & gusty winds (speed reaching 30 - 40 kmph)** at isolated places over Madhya Maharashtra, Marathwada, Coastal Andhra Pradesh & Yanam, Telangana; **with lightning** at isolated places over East Uttar Pradesh, Kerala & Mahe and Arunachal Pradesh.
- ❖ **Squally weather with wind speed 35 kmph to 45 kmph gusting to 55 kmph** likely to prevail over Gulf of Mannar; adjoining Comorin area. Fishermen are advised not to venture into these areas.

14th April (Day 4):

- ❖ **Heavy rainfall** likely at isolated places over Assam & Meghalaya.
- ❖ **Heat wave conditions** very likely in isolated pockets over West Rajasthan.
- ❖ **Thunderstorm accompanied with lightning, gusty winds (speed reaching 40 - 50 kmph)** likely at isolated places over Assam & Meghalaya, Nagaland, Manipur, Mizoram & Tripura, Gangetic West Bengal, Bihar, Jharkhand, Odisha; **with lightning & gusty winds (speed reaching 30 - 40 kmph)** at isolated places over Madhya Maharashtra, Marathwada, Coastal Andhra Pradesh & Yanam, Vidarbha, Chhattisgarh and Sub-Himalayan West Bengal & Sikkim and **with lightning** at isolated places over Kerala & Mahe and Arunachal Pradesh.

15th April (Day 5):

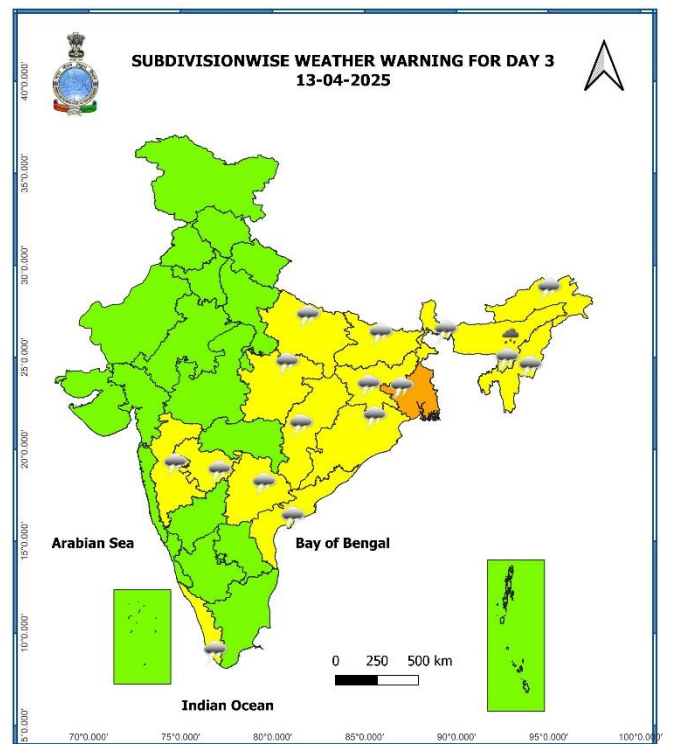
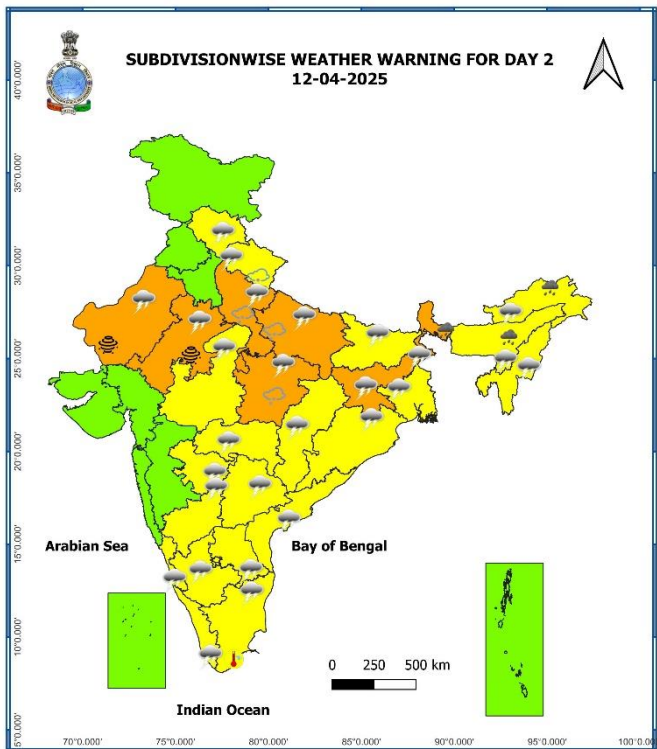
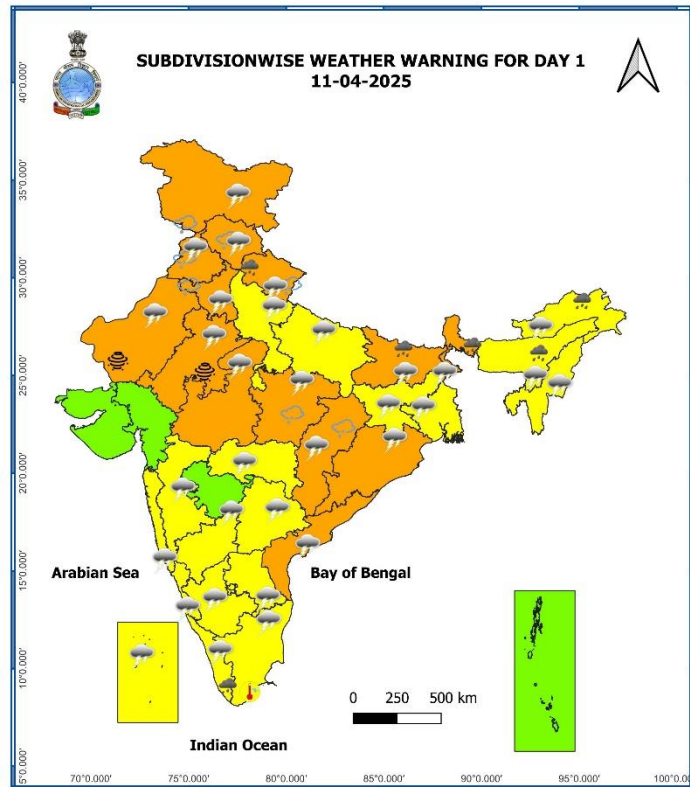
- ❖ **Heavy rainfall** very likely at isolated places over Assam & Meghalaya.
- ❖ **Thunderstorm accompanied with lightning, gusty winds (speed reaching 40 - 50 kmph)** likely at isolated places over Chhattisgarh, Odisha; **with lightning & gusty winds (speed reaching 30 - 40 kmph)** at isolated places over Vidarbha, Bihar, Jharkhand, West Bengal & Sikkim and **with lightning** at isolated places over Kerala & Mahe.
- ❖ **Heat wave** likely in isolated pockets over West Rajasthan and Gujarat state.

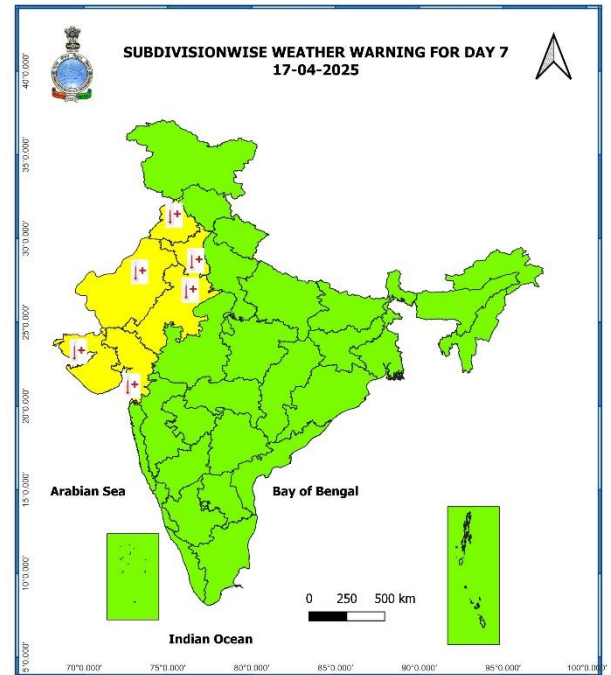
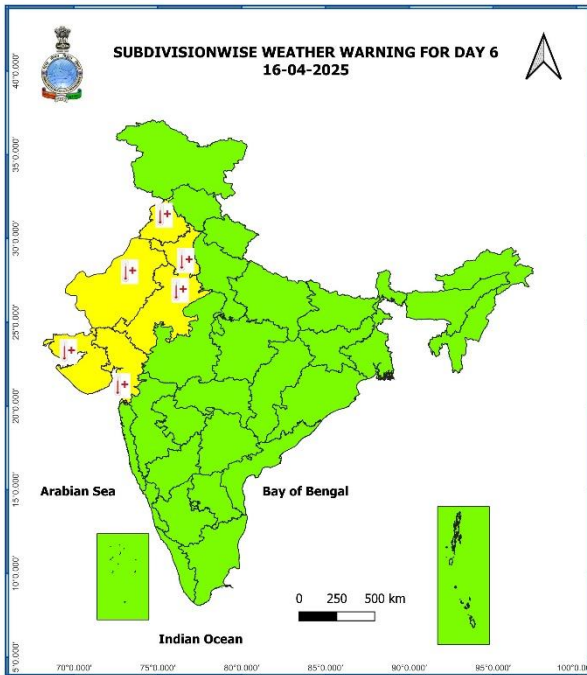
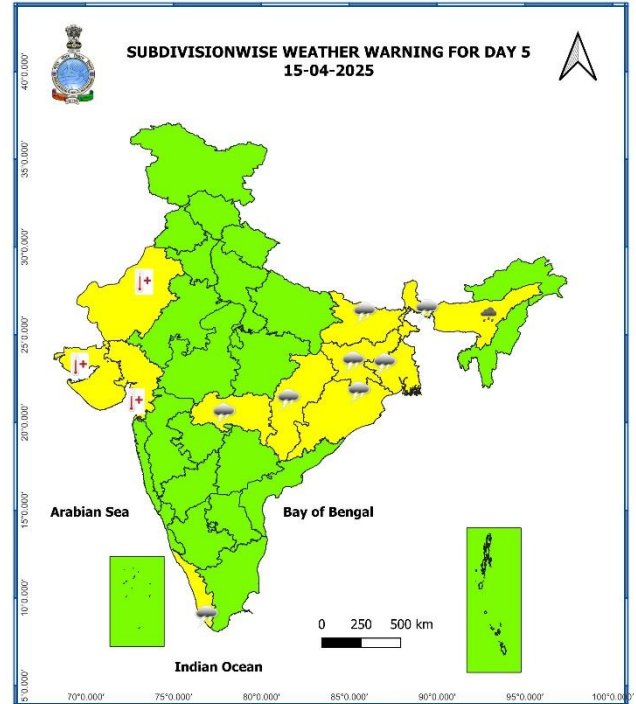
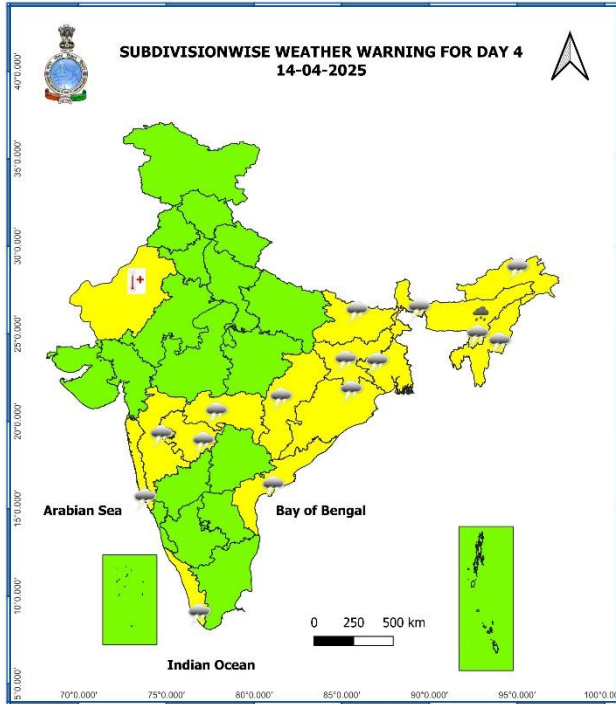
16th April (Day 6):

- ❖ **Heat wave to severe heat wave conditions** likely in isolated pockets over West Rajasthan. **Heat wave conditions** in isolated pockets over Punjab, Haryana, Delhi, Gujarat state and East Rajasthan.

17th April (Day 7):

- ❖ **Heat wave to severe heat wave conditions** likely in isolated pockets over West Rajasthan. **Heat wave conditions** in isolated pockets over Punjab, Haryana, Delhi, Gujarat state and East Rajasthan.





- Action may be taken based on **ORANGE AND RED** COLOUR warnings.
- Vulnerable regions likely urban and hilly areas action may be initiated for heavy rainfall warning.
- As the lead period increases forecast accuracy decreases.

Table-1

Subdivision	11-Apr	12-Apr	13-Apr	14-Apr	15-Apr	16-Apr	17-Apr
	Day 1	Day 2	Day 3	Day 4	Day 5	Day 6	Day 7
ANDAMAN & NICOBAR ISLANDS	WS	FWS	SCT	SCT	SCT	SCT	SCT
ARUNACHAL PRADESH	FWS	FWS	SCT	SCT	SCT	SCT	SCT
ASSAM & MEGHALAYA	WS	WS	WS	FWS	FWS	FWS	FWS
NAGALAND, MANIPUR, MIZORAM & TRIPURA	SCT	SCT	SCT	SCT	SCT	SCT	SCT
SUB-HIMALAYAN WEST BENGAL & SIKKIM	FWS	FWS	FWS	SCT	SCT	FWS	SCT
GANGETIC WEST BENGAL	SCT	SCT	FWS	FWS	SCT	SCT	SCT
ODISHA	ISOL	ISOL	ISOL	SCT	FWS	FWS	SCT
JHARKHAND	SCT	SCT	FWS	FWS	SCT	SCT	SCT
BIHAR	SCT	SCT	SCT	SCT	SCT	ISOL	ISOL
EAST UTTAR PRADESH	ISOL	SCT	ISOL	ISOL	SCT	ISOL	SCT
WEST UTTAR PRADESH	SCT	SCT	ISOL	DRY	DRY	DRY	ISOL
UTTARAKHAND	WS	FWS	ISOL	DRY	DRY	ISOL	ISOL
HARYANA CHANDIGARH & DELHI	SCT	ISOL	DRY	DRY	DRY	DRY	DRY
PUNJAB	SCT	ISOL	DRY	DRY	DRY	DRY	DRY
HIMACHAL PRADESH	FWS	SCT	DRY	DRY	DRY	DRY	ISOL
JAMMU & KASHMIR AND LADAKH	FWS	ISOL	DRY	DRY	DRY	DRY	ISOL
WEST RAJASTHAN	ISOL	ISOL	DRY	DRY	DRY	DRY	DRY
EAST RAJASTHAN	ISOL	ISOL	DRY	DRY	DRY	DRY	DRY
WEST MADHYA PRADESH	ISOL	ISOL	DRY	DRY	DRY	DRY	DRY
EAST MADHYA PRADESH	ISOL	ISOL	ISOL	ISOL	ISOL	DRY	DRY
GUJARAT REGION	DRY	DRY	DRY	DRY	DRY	DRY	DRY
SAURASHTRA & KUTCH	DRY	DRY	DRY	DRY	DRY	DRY	DRY
KONKAN & GOA	ISOL	DRY	ISOL	ISOL	ISOL	DRY	DRY
MADHYA MAHARASHTRA	ISOL	ISOL	ISOL	ISOL	ISOL	DRY	DRY
MARATHAWADA	ISOL	ISOL	ISOL	ISOL	ISOL	ISOL	DRY
VIDARBHA	ISOL	ISOL	ISOL	ISOL	ISOL	ISOL	ISOL
CHHATTISGARH	ISOL	ISOL	ISOL	ISOL	SCT	SCT	SCT
COASTAL ANDHRA PRADESH & YANAM	SCT	SCT	SCT	SCT	SCT	SCT	SCT
TELANGANA	ISOL	ISOL	ISOL	ISOL	ISOL	ISOL	ISOL
RAYALASEEMA	SCT	SCT	ISOL	ISOL	ISOL	ISOL	ISOL
TAMILNADU PUDUCHERRY & KARAIKAL	ISOL	ISOL	ISOL	ISOL	ISOL	ISOL	ISOL
COASTAL KARNATAKA	SCT	ISOL	ISOL	SCT	SCT	SCT	SCT
NORTH INTERIOR KARNATAKA	ISOL	ISOL	ISOL	ISOL	ISOL	ISOL	ISOL
SOUTH INTERIOR KARNATAKA	SCT	ISOL	ISOL	SCT	SCT	SCT	SCT
KERALA & MAHE	FWS	SCT	SCT	SCT	SCT	SCT	SCT
LAKSHADWEEP	SCT	SCT	DRY	DRY	DRY	DRY	DRY

- As the lead period increases forecast accuracy decreases.

Impact expected and action suggested due to isolated thunderstorm with lightning/gusty winds & Hailstorm over Jammu-Kashmir-Ladakh-Gilgit-Baltistan-Muzaffarabad, Himachal Pradesh, Punjab, Haryana, Chhattisgarh, Bihar, Coastal Andhra Pradesh & Yanam, Odisha, West Madhya Pradesh on 11th; Sub-Himalayan West Bengal & Sikkim, Uttarakhand, East Madhya Pradesh, Rajasthan on 11th & 12th; Jharkhand, Uttar Pradesh on 12th; Gangetic West Bengal on 13th April.

Impact expected:

- Strong wind/hail may damage plantation, horticulture and standing crops.
- Hail may injure people and cattle at open places.
- Partial damage to vulnerable structures due to strong winds.
- Minor damage to kutcha houses/walls and huts.
- Loose objects may fly.

Action suggested:

- Stay indoors, close windows & doors and avoid travel if possible.
- Take safe shelters; do not take shelter under trees.
- Do not lie on concrete floors and do not lean against concrete walls.
- Unplug electrical/ electronic appliances.
- Immediately get out of water bodies.
- Keep away from all the objects that conduct electricity.

Agromet advisories for likely impact of Hailstorm / Heavy Rainfall / Gusty Winds / Heatwave

- In **Himachal Pradesh, Uttarakhand, East Madhya Pradesh and Chhattisgarh**, immediately shift the harvested produce in safer places or cover the produce with tarpaulin sheets in the fields to avoid the adverse impact of likely hailstorm. Use hail net and hail caps to prevent mechanical damage in orchards due to hailstorms.
- In **Arunachal Pradesh, Assam & Meghalaya, Sub-Himalayan West Bengal & Sikkim, Bihar and Uttarakhand** immediately harvest the matured crops, fruits and vegetables and shift the harvested produce in safer places or cover the produce with tarpaulin sheets in the fields. Also drain out excess water from standing crop and vegetable fields.
- Provide mechanical support to horticultural crops and staking to vegetables to avoid lodging.

Livestock / Poultry / Fishery

- Keep the animals inside the shed during heavy rainfall / hailstorm and provide them balanced feed.
- Store feed and fodder in a safe place to prevent spoilage.
- Construct an outlet with proper netting around the ponds to drain out excess water, thereby preventing fish from escaping in case of overflow.

DEFINITION/CRITERIA

Rain/ Snow *

Heavy: 64.5 to 115.5 mm/cm *
Very Heavy: 115.6 to 204.4 mm/cm *
Extremely Heavy: > 204.4 mm/cm *

Heat Wave

When maximum temperature of a station reaches $\geq 40^{\circ}\text{C}$ for plains and $\geq 30^{\circ}\text{C}$ for hilly regions
(a) Based on Departure from normal
Heat Wave: Maximum Temperature Departure from normal 4.5°C to 6.4°C .
Severe Heat Wave: Maximum Temperature Departure from normal $\geq 6.5^{\circ}\text{C}$
(b). Based on Actual maximum temperature
Heat Wave: When actual maximum temperature $\geq 45^{\circ}\text{C}$.
Severe Heat Wave: When actual maximum temperature $\geq 47^{\circ}\text{C}$
(c). Criteria for heat wave for coastal stations
When maximum temperature departure is $> 4.5^{\circ}\text{C}$ from normal. Heat Wave may be described provided maximum temperature $\geq 37^{\circ}\text{C}$

Warm Night

When maximum temperature remains 40°C
Warm Night: When minimum temperature departure 4.5°C to 6.4°C .
Severe Warm Night: When minimum temperature departure $> 6.4^{\circ}\text{C}$.

Cold Wave

When minimum temperature of a station $\leq 10^{\circ}\text{C}$ for plains and $\leq 0^{\circ}\text{C}$ for hilly regions.
(a). Based on departure
Cold Wave: Minimum Temperature Departure from normal -4.5°C to -6.4°C .
Severe Cold Wave: Minimum Temperature Departure from normal $\leq -6.5^{\circ}\text{C}$
(b) Based on actual Minimum Temperature (for Plains only)
Cold Wave : When Minimum Temperature is $\leq 4.0^{\circ}\text{C}$
Severe Cold Wave: When Minimum Temperature is $\leq 2.0^{\circ}\text{C}$
(c) For Coastal Stations
When Minimum Temperature departure is $\leq -4.5^{\circ}\text{C}$ & actual Minimum Temperature is $\leq 15^{\circ}\text{C}$

Cold Day

When minimum temperature of a station $\leq 10^{\circ}\text{C}$ for plains and $\leq 0^{\circ}\text{C}$ for hilly regions
Based on departure
Cold Day: Maximum Temperature Departure from normal -4.5°C to -6.4°C .
Severe Cold Day: Maximum Temperature Departure from normal $\leq -6.5^{\circ}\text{C}$

Fog

Phenomenon of small droplets suspended in air and the horizontal visibility $< 1\text{km}$
Moderate Fog: When the visibility between 500-200 metres
Dense Fog: when the visibility between 50- 200 metres
Very Dense Fog: when the visibility < 50 metres

Thunderstorm

Sudden electrical discharges manifested by a flash of light (Lightning) and a sharp rumbling sound (thunder)

Dust/Sand Storm

An ensemble of particles of dust or sand energetically lifted to great heights by a strong and turbulent wind.

Frost

Ice deposits on ground
Air temperature $\leq 4^{\circ}\text{C}$ (over Plains)

Squall

A strong wind that rises suddenly, lasts for atleast 1 minute.
Moderate: Wind speed 52-61 kmph
Severe: Wind speed 62-87 kmph
Very Severe: Wind speed > 87 kmph

Sea State

Effect of various waves in the sea over specific area
Rough to very rough: Wind speed 41-62 kmph (22-33 knots) & Wave height 2.5-6 metre
High to very high: Wind speed 63-117 kmph (34-63 knots) & Wave height 6-14 metre
Phenomenal: Wind speed > 117 kmph (> 63 knots) & Wave height > 14 metre

Cyclone

Cyclonic Storm: Wind speed 62-87 kmph (34-47 knots)
Severe Cyclonic Storm: Wind speed 88-117 kmph (48-63 knots)
Very Severe Cyclonic Storm: Wind speed 118-165 kmph (64 - 89 knots)
Extremely Severe Cyclonic Storm: Wind speed 166-220 kmph (90 -119 knots)
Super Cyclone Storm: Wind speed > 220 kmph (> 119 knots)

* Red colour warning does not mean "Red Alert", Red colour warning means "Take Action".
Forecast and Warning for any day is valid from 0830 hours IST of day till 0830 hours IST of next day.
For more details, kindly visit <https://mausam.imd.gov.in> or contact: 011-2434-4599
(Service to the Nation since 1875)

Hot and Humid: When maximum temperatures remains 3°C above normal along with the above normal relative humidity.