

Sunday, May 04, 2025  
Time of Issue: 0800 hours IST  
(MORNING)

**All India Impact Based Weather Warning Bulletin**

Weather Warnings for next 7 days is given below:

(Graphics for warnings & rainfall distribution (Table 1) are given below the text:

**04<sup>th</sup> May (Day 1)**

- ❖ **Heavy Rainfall** very likely at isolated places over Odisha.
- ❖ **Thundersquall with wind speed reaching(50-60kmph)** very likely at isolated places over East Madhya Pradesh, Haryana, Chandigarh & Delhi, Odisha, Punjab, Gujarat region, South Interior Karnataka, Uttarakhand, Rajasthan, Gangetic West Bengal and West Uttar Pradesh.
- ❖ **Thunderstorm accompanied with lightning & gusty winds(40-50kmph)** very likely at isolated places over Andhra Pradesh, Bihar, Chhattisgarh, East Uttar Pradesh, Himachal Pradesh, Saurashtra & Kutch, Jammu and Kashmir and Ladakh, Jharkhand, North Interior Karnataka, Telangana, Vidarbha and West Madhya Pradesh.
- ❖ **Thunderstorm accompanied with lightning & gusty winds(30-40kmph)** very likely at isolated places over Assam & Meghalaya, Costal Karnataka, Kerala and Mahe, Madhya Maharashtra, Marathwada, Nagaland, Manipur, Mizoram and Tripura, Sub Himalayan West Bengal & Sikkim and Tamilnadu & Puducherry.
- ❖ **Thunderstorm accompanied with Lightning** very likely at isolated places over Arunachal Pradesh.
- ❖ **Hailstorm** very likely at isolated places over East Madhya Pradesh and Uttarakhand.
- ❖ **Dust Storm** very likely at isolated places over West Rajasthan.
- ❖ **Squally wind with speed 45 kmph to 50 kmph gusting to 55 kmph** likely to prevail over many parts of northeast Arabian sea & adjoining northwest Arabian sea, along and off north Gujarat coast, over gulf of Mannar and adjoining Comorin area. Fishermen are advised not to venture into these areas.

**05<sup>th</sup> May (Day 2)**

- ❖ **Heavy Rainfall** very likely at isolated places over Arunachal Pradesh, Assam & Meghalaya and Tamilnadu & Puducherry.
- ❖ **Thundersquall with wind speed reaching(50-60kmph)** very likely at isolated places over Bihar, Punjab, South Interior Karnataka, Uttar Pradesh, Uttarakhand and West Madhya Pradesh and likely at isolated places over Haryana, Chandigarh & Delhi.
- ❖ **Thunderstorm accompanied with lightning & gusty winds(40-50kmph)** very likely at isolated places over Chhattisgarh, Coastal Andhra Pradesh, East Madhya Pradesh, Gujarat, Himachal Pradesh, Jammu and Kashmir and Ladakh, North Interior Karnataka, Odisha, Rajasthan, Sub Himalayan West Bengal & Sikkim and Telangana.
- ❖ **Thunderstorm accompanied with lightning & gusty winds(30-40kmph)** very likely at isolated places over Assam & Meghalaya, Costal Karnataka, Gangetic West Bengal, Jharkhand, Kerala and Mahe, Konkan & Goa, Maharashtra, Nagaland, Manipur, Mizoram and Tripura and Rayalaseema.
- ❖ **Thunderstorm accompanied with Lightning** very likely at isolated places over Arunachal Pradesh and Tamilnadu & Puducherry.
- ❖ **Hailstorm** very likely at isolated places over Gujarat, North Interior Karnataka and Uttarakhand.
- ❖ **Squally wind with speed 45 kmph to 50 kmph gusting to 55 kmph** likely to prevail over central parts of north Arabian sea. Fishermen are advised not to venture into these areas.

### 06<sup>th</sup> May (Day 3)

- ❖ **Heavy Rainfall** likely at isolated places over Arunachal Pradesh, Assam & Meghalaya, Kerala and Mahe, Tamilnadu & Puducherry and West Rajasthan
- ❖ **Thundersquall with wind speed reaching(50-60kmph)** likely at isolated places over Gujarat, North Interior Karnataka, Uttarakhand and West Madhya Pradesh.
- ❖ **Thunderstorm accompanied with lightning & gusty winds(40-50kmph)** likely at isolated places over Assam & Meghalaya, Chhattisgarh, Coastal Andhra Pradesh, East Madhya Pradesh, Haryana, Chandigarh & Delhi, Kerala and Mahe, Konkan & Goa, Madhya Maharashtra, Marathwada, Odisha, Punjab, Rajasthan and Telangana.
- ❖ **Thunderstorm accompanied with lightning & gusty winds(30-40kmph)** likely at isolated places over Bihar, Himachal Pradesh, Jharkhand, Nagaland, Manipur, Mizoram and Tripura, Rayalaseema, South Interior Karnataka, Uttar Pradesh, Vidarbha and West Bengal & Sikkim.
- ❖ **Thunderstorm accompanied with Lightning** likely at isolated places over Arunachal Pradesh, Coastal Karnataka and Tamilnadu & Puducherry.
- ❖ **Hailstorm** likely at isolated places over Gujarat, Interior Karnataka and Uttarakhand.
- ❖ **Squally wind with speed 45 kmph to 50 kmph gusting to 55 kmph** likely to prevail over many parts of northwest Arabian sea. Fishermen are advised not to venture into these areas.

### 07<sup>th</sup> May (Day 4)

- ❖ **Heavy Rainfall** likely at isolated places over Arunachal Pradesh, Assam & Meghalaya, Gujarat, Kerala and Mahe and West Rajasthan
- ❖ **Thundersquall with wind speed reaching(50-60kmph)** likely at isolated places over Gujarat, Madhya Maharashtra, Marathwada and North Interior Karnataka.
- ❖ **Thunderstorm accompanied with lightning & gusty winds(40-50kmph)** likely at isolated places over Assam & Meghalaya, Chhattisgarh, Kerala and Mahe, Konkan & Goa, Madhya Pradesh, Rajasthan and Telangana.
- ❖ **Thunderstorm accompanied with lightning & gusty winds(30-40kmph)** likely at isolated places over Andhra Pradesh, Bihar, Haryana, Chandigarh & Delhi, Himachal Pradesh, Nagaland, Manipur, Mizoram and Tripura, Punjab, South Interior Karnataka, Uttar Pradesh, Uttarakhand and Vidarbha.
- ❖ **Thunderstorm accompanied with Lightning** likely at isolated places over Arunachal Pradesh, Coastal Karnataka and Tamilnadu & Puducherry
- ❖ **Hailstorm** likely at isolated places over Madhya Maharashtra, Marathwada and South Interior Karnataka.
- ❖ **Dust Storm** very likely at isolated places over Rajasthan.
- ❖ **Squally wind with speed 45 kmph to 50 kmph gusting to 55 kmph** likely to prevail over some parts of northwest Arabian sea, off Oman coast. Fishermen are advised not to venture into these areas.

### 08<sup>th</sup> May (Day 5)

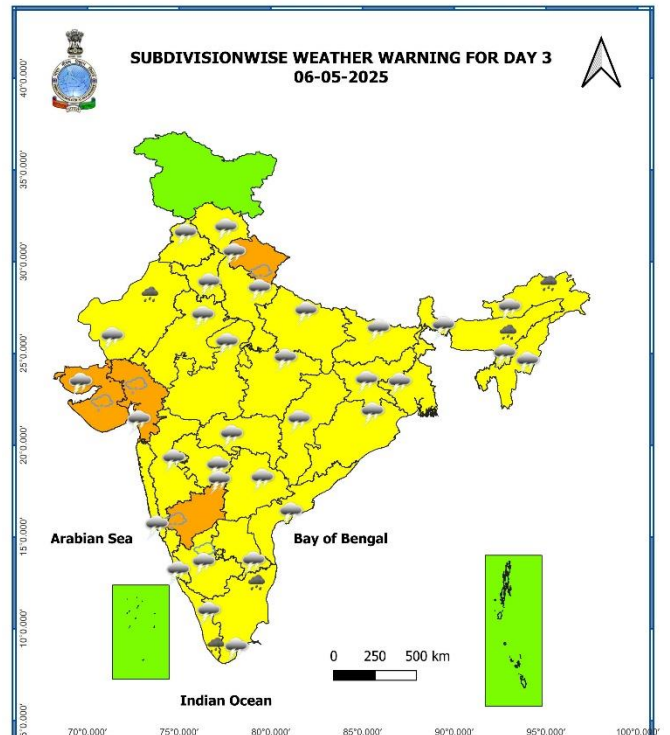
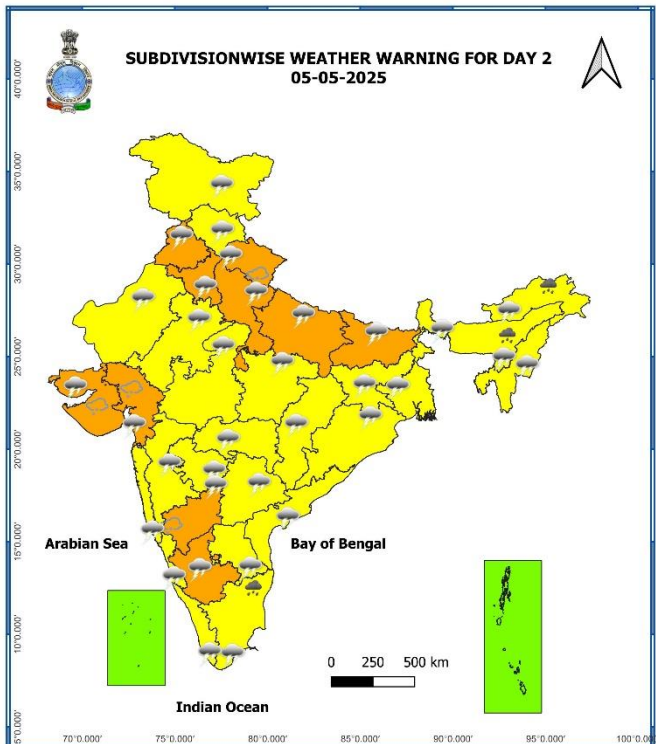
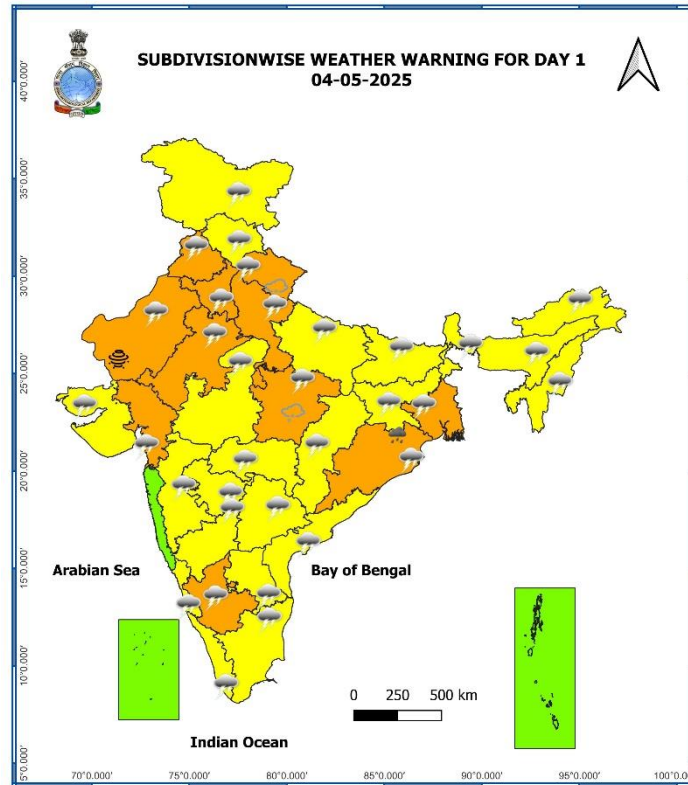
- ❖ **Heavy Rainfall** likely at isolated places over Arunachal Pradesh, Assam & Meghalaya and Gujarat.
- ❖ **Thunderstorm accompanied with lightning & gusty winds(40-50kmph)** likely at isolated places over Gujarat, Marathwada and Rajasthan.
- ❖ **Thunderstorm accompanied with lightning & gusty winds(30-40kmph)** likely at isolated places over Haryana, Chandigarh & Delhi, Himachal Pradesh, Konkan & Goa, Madhya Maharashtra and Punjab.

### 09<sup>th</sup> May (Day 6)

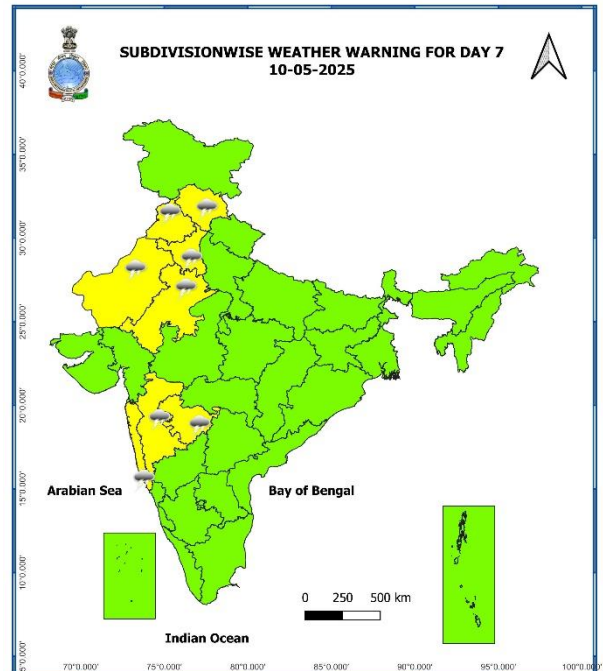
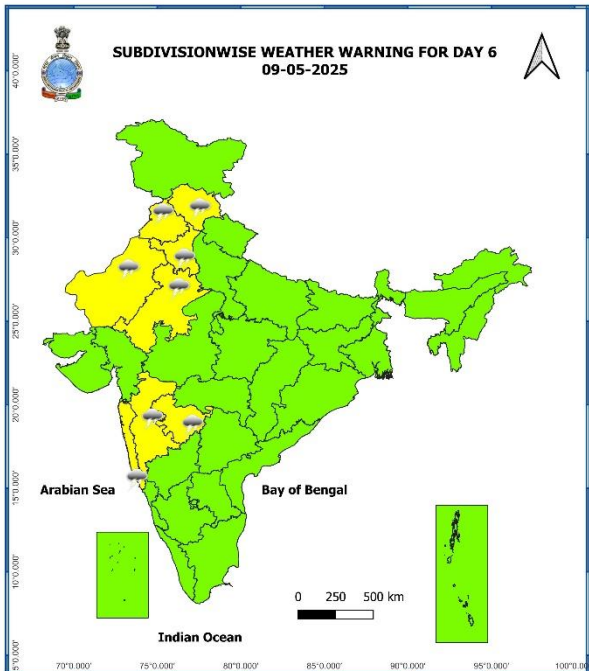
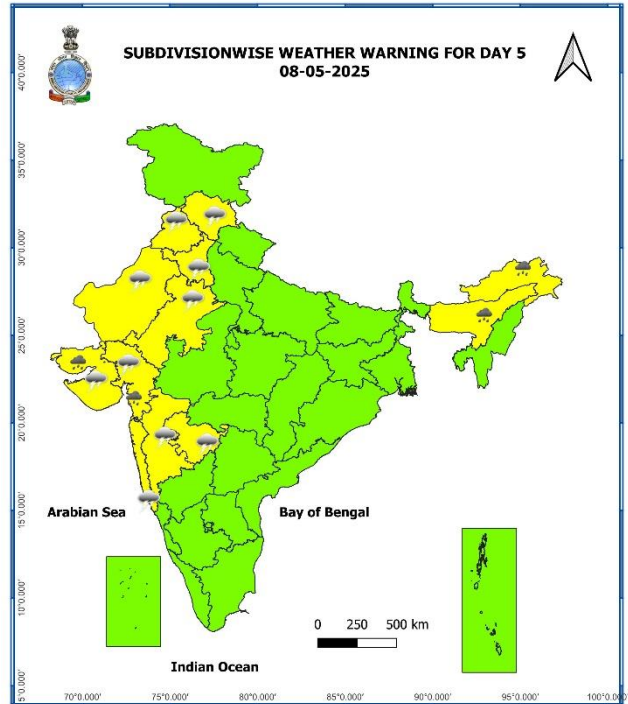
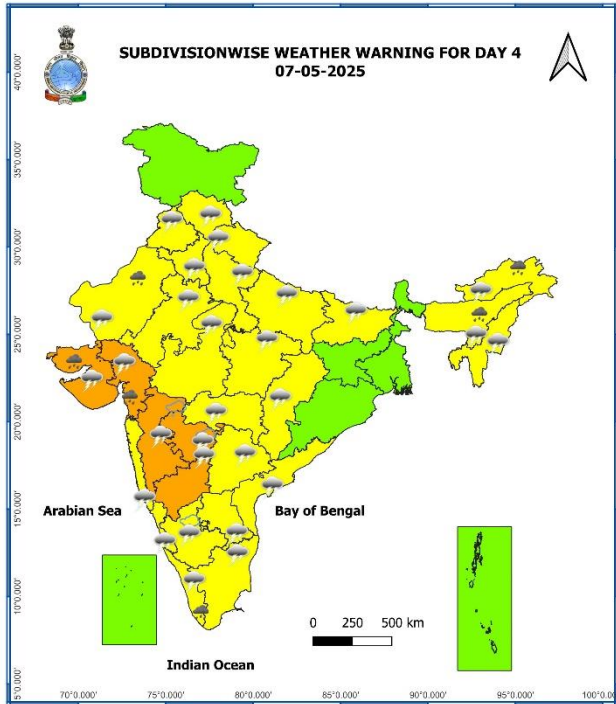
- ❖ **Thunderstorm accompanied with lightning & gusty winds(40-50kmph)** likely at isolated places over Marathwada and Rajasthan.
- ❖ **Thunderstorm accompanied with lightning & gusty winds(30-40kmph)** likely at isolated places over Haryana, Chandigarh & Delhi, Himachal Pradesh, Konkan & Goa, Madhya Maharashtra and Punjab.

### 10<sup>th</sup> May (Day 7)

- ❖ **Thunderstorm accompanied with lightning & gusty winds(40-50kmph)** likely at isolated places over Marathwada and Rajasthan.
- ❖ **Thunderstorm accompanied with lightning & gusty winds(30-40kmph)** likely at isolated places over Haryana, Chandigarh & Delhi, Himachal Pradesh, Konkan & Goa, Madhya Maharashtra and Punjab.







- Action may be taken based on **ORANGE AND RED** COLOUR warnings.
- Vulnerable regions likely urban and hilly areas action may be initiated for heavy rainfall warning.
- As the lead period increases forecast accuracy decreases.

Table-1

7 Days Rainfall Forecast								
S. No.	Subdivision	04-May	05-May	06-May	07-May	08-May	09-May	10-May
		Day 1	Day 2	Day 3	Day 4	Day 5	Day 6	Day 7
1	ANDAMAN & NICOBAR ISLANDS	FWS	SCT	WS	WS	SCT	FWS	FWS
2	ARUNACHAL PRADESH	FWS	WS	WS	WS	WS	FWS	FWS
3	ASSAM & MEGHALAYA	FWS	FWS	WS	WS	WS	FWS	FWS
4	NAGALAND, MANIPUR, MIZORAM & TRIPURA	WS	FWS	FWS	FWS	SCT	SCT	SCT
5	SUB-HIMALAYAN WEST BENGAL & SIKKIM	FWS	FWS	FWS	FWS	SCT	SCT	SCT
6	GANGETIC WEST BENGAL	SCT	SCT	SCT	ISOL	ISOL	DRY	DRY
7	ODISHA	FWS	SCT	SCT	ISOL	ISOL	ISOL	ISOL
8	JHARKHAND	SCT	SCT	ISOL	DRY	DRY	DRY	DRY
9	BIHAR	SCT	SCT	ISOL	ISOL	ISOL	DRY	DRY
10	EAST UTTAR PRADESH	FWS	FWS	FWS	ISOL	DRY	DRY	DRY
11	WEST UTTAR PRADESH	FWS	FWS	FWS	SCT	ISOL	DRY	DRY
12	UTTARAKHAND	FWS	FWS	FWS	SCT	SCT	SCT	SCT
13	HARYANA CHANDIGARH & DELHI	SCT	FWS	SCT	ISOL	ISOL	ISOL	ISOL
14	PUNJAB	SCT	FWS	SCT	ISOL	ISOL	ISOL	ISOL
15	HIMACHAL PRADESH	FWS	FWS	SCT	SCT	SCT	SCT	SCT
16	JAMMU & KASHMIR AND LADAKH	FWS	SCT	ISOL	ISOL	ISOL	ISOL	ISOL
17	WEST RAJASTHAN	ISOL	SCT	SCT	ISOL	ISOL	ISOL	ISOL
18	EAST RAJASTHAN	ISOL	ISOL	SCT	ISOL	ISOL	ISOL	ISOL
19	WEST MADHYA PRADESH	ISOL	SCT	SCT	ISOL	ISOL	ISOL	ISOL
20	EAST MADHYA PRADESH	SCT	SCT	SCT	ISOL	ISOL	ISOL	ISOL
21	GUJARAT REGION	SCT	SCT	FWS	FWS	FWS	SCT	SCT
22	SAURASHTRA & KUTCH	ISOL	SCT	FWS	FWS	FWS	SCT	SCT
23	KONKAN & GOA	ISOL	ISOL	ISOL	ISOL	ISOL	ISOL	ISOL
24	MADHYA MAHARASHTRA	ISOL	ISOL	SCT	SCT	ISOL	ISOL	ISOL
25	MARATHAWADA	ISOL	ISOL	ISOL	ISOL	ISOL	ISOL	ISOL
26	VIDARBHA	ISOL	SCT	ISOL	ISOL	ISOL	ISOL	ISOL
27	CHHATTISGARH	SCT	ISOL	ISOL	ISOL	ISOL	ISOL	ISOL
28	COASTAL ANDHRA PRADESH & YANAM	SCT	FWS	FWS	ISOL	ISOL	ISOL	ISOL
29	TELANGANA	SCT	SCT	SCT	SCT	ISOL	ISOL	ISOL
30	RAYALASEEMA	SCT	SCT	SCT	SCT	ISOL	ISOL	ISOL
31	TAMILNADU PUDUCHERRY & KARAIKAL	SCT	SCT	SCT	SCT	SCT	ISOL	ISOL
32	COASTAL KARNATAKA	ISOL	ISOL	SCT	SCT	SCT	ISOL	ISOL
33	NORTH INTERIOR KARNATAKA	ISOL	ISOL	SCT	ISOL	ISOL	ISOL	ISOL
34	SOUTH INTERIOR KARNATAKA	SCT	ISOL	SCT	SCT	SCT	ISOL	ISOL
35	KERALA & MAHE	SCT	FWS	FWS	FWS	SCT	SCT	SCT
36	LAKSHADWEEP	SCT	SCT	SCT	SCT	SCT	SCT	SCT

• As the lead period increases forecast accuracy decreases.

## Impact expected and action suggested due to isolated thunderstorm with lightning/gusty & Squally winds & Hailstorm over

- ❖ **Thundersquall (wind speed reaching 50-60 kmph)** likely over Rajasthan, Gangetic West Bengal, Madhya Pradesh, Odisha on 04<sup>th</sup>; Bihar, East Uttar Pradesh on 05<sup>th</sup>, Punjab, Haryana Chandigarh & Delhi, West Uttar Pradesh on 04<sup>th</sup> & 05<sup>th</sup>; West Madhya Pradesh on 05<sup>th</sup> & 06<sup>th</sup>; South Interior Karnataka on 04<sup>th</sup> & 05<sup>th</sup>; Gujarat, North Interior Karnataka on 06<sup>th</sup> & 07<sup>th</sup> and Madhya Maharashtra & Marathwada on 07<sup>th</sup> May.
- ❖ **Isolated hailstorm** activity likely over East Madhya Pradesh, Himachal Pradesh on 04<sup>th</sup>, North Interior Karnataka, Gujarat state on 05<sup>th</sup> & 06<sup>th</sup>, South Interior Karnataka on 06<sup>th</sup> & 07<sup>th</sup> and Uttarakhand during 04<sup>th</sup>-06<sup>th</sup> and Madhya Maharashtra & Marathwada on 07<sup>th</sup> May.

### Impact expected:

- Breaking of tree branches, uprooting of large avenue trees. Large dead limbs blown from trees. Damage to Standing crops.
- Minor to Major damage to banana and papaya trees.
- Minor to major damage to power and communication lines due to breaking of branches.
- Strong wind/hail may damage plantation, horticulture and standing crops.
- Hail may injure people and cattle at open places.
- Partial damage to vulnerable structures due to strong winds.
- Minor damage to kutcha houses/walls and huts.
- Loose objects may fly.

### Action suggested:

- People are advised to keep a watch on the weather for worsening conditions and be ready to move to safer places accordingly.
- Stay indoors, close windows & doors and avoid travel if possible.
- Take safe shelters; do not take shelter under trees.
- Do not lie on concrete floors and do not lean against concrete walls.
- Unplug electrical/ electronic appliances.
- Immediately get out of water bodies.
- Keep away from all the objects that conduct electricity.

## Agromet advisories for likely impact of Hailstorm / Heavy Rainfall / Gusty Winds / Heat wave

- In **Odisha, Kerala and Sikkim**, make provision to drain out excess water from standing crop and vegetable fields.
- In **Sikkim, Odisha, Himachal Pradesh, East Madhya Pradesh, Chhattisgarh and South Interior Karnataka**, use hail nets and hail caps to prevent mechanical damage in vegetables and orchards due to the possibility of hailstorms.
- Undertake immediate harvesting of matured fruits and vegetables in **Marathwada, Interior Karnataka and Gujarat**; groundnut, onion, fruits and vegetables in **Madhya Maharashtra**.
- To protect standing crops, vegetables and orchards from the adverse effects of heat waves and high temperatures, apply light and frequent irrigation in the evening.
- Shift the harvested produce in safer places or cover the produce with tarpaulin sheets in the fields. Tie the harvested crops properly and cover them to minimise the risk of displacement due to strong surface winds.
- Provide mechanical support to horticultural crops and staking to vegetables to avoid lodging.

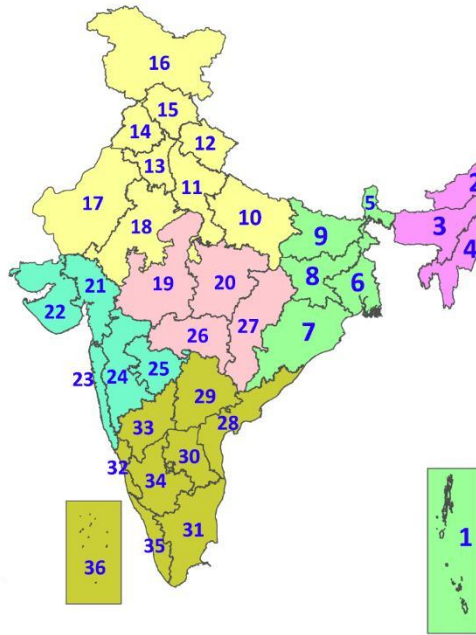
### Livestock / Poultry / Fishery

- Keep the animals inside the shed during heavy rainfall / hailstorm and provide them balanced feed.
- Store feed and fodder in a safe place to prevent spoilage.
- To reduce the effect of heat wave/high temperature, cover the roof of poultry sheds with grass. Also, provide clean, hygienic and plenty of drinking water to animals.
- Construct an outlet with proper netting around the ponds to drain out excess water, thereby preventing fish from escaping in case of overflow.



## LEGENDS

1. अंडमान और निकोबार द्वीपसमूह
2. अरुणाचल प्रदेश
3. असम और मेघालय
4. नागालैंड, मणिपुर, मिजोरम और त्रिपुरा
5. उप-हिमालयी पश्चिम बंगाल और सिक्किम
6. गंगीय पश्चिम बंगाल
7. ओडिशा
8. झारखंड
9. बिहार
10. पूर्वी उत्तर प्रदेश
11. पश्चिम उत्तर प्रदेश
12. उत्तराखंड
13. हरियाणा, चंडीगढ़ और दिल्ली
14. पंजाब
15. हिमाचल प्रदेश
16. जम्मू और कश्मीर और लद्दाख
17. पश्चिम राजस्थान
18. पूर्वी राजस्थान
19. पश्चिम मध्य प्रदेश
20. पूर्वी मध्य प्रदेश
21. गुजरात
22. सौराष्ट्र
23. कोंकण और गोवा
24. मध्य महाराष्ट्र
25. मराठवाड़ा
26. विदर्भ
27. छत्तीसगढ़
28. तटीय आंध्र प्रदेश और यनम
29. तेलंगाना
30. रायलसीमा
31. तमिलनाडु, पुडुचेरी और कराईकल
32. तटीय कर्नाटक
33. आंतरिक उत्तरी कर्नाटक
34. आंतरिक दक्षिणी कर्नाटक
35. केरल और माहे
36. लक्षद्वीप



1. Andaman & Nicobar Islands
2. Arunachal Pradesh
3. Assam & Meghalaya
4. Nagaland, Manipur, Mizoram & Tripura
5. Sub-Himalayan West Bengal & Sikkim
6. Gangetic West Bengal
7. Odisha
8. Jharkhand
9. Bihar
10. East Uttar Pradesh
11. West Uttar Pradesh
12. Uttarakhand
13. Haryana, Chandigarh & Delhi
14. Punjab
15. Himachal Pradesh
16. Jammu & Kashmir and Ladakh
17. West Rajasthan
18. East Rajasthan
19. West Madhya Pradesh
20. East Madhya Pradesh
21. Gujarat
22. Saurashtra
23. Konkan & Goa
24. Madhya Maharashtra
25. Marathwada
26. Vidarbha
27. Chhattisgarh
28. Coastal Andhra Pradesh & Yanam
29. Telangana
30. Rayalaseema
31. Tamilnadu, Puducherry & Karaikal
32. Coastal Karnataka
33. North Interior Karnataka
34. South Interior Karnataka
35. Kerala & Mahe
36. Lakshadweep

## SPATIAL DISTRIBUTION (% of Stations reporting)

% Stations	Category	% Stations	Category
76-100	Widespread (WS/Most Places)	26-50	Scattered (SCT/A Few Places)
51-75	Fairly Widespread (FWS/Many Places)	1-25	Isolated (ISOL)



Fog



Heavy Snow



Cold Wave



Heavy Rain



Dust Storm



Cold Day



Very Heavy Rain



Heat Wave



Ground Frost



Extremely Heavy Rain



Warm Night



Thunder & Lightning



Hot Day



Hailstorm



Hot & Humid



Dust Raising Winds



Strong Surface Winds

## COLOUR CODED WARNING

No Warning (No Action)

Watch (Be Aware)

Alert (Be Prepared To Take Action)

Warning (Take Action)

## Probabilistic Forecast

Terms	Probability of Occurrence (%)
Unlikely	< 25
Likely	25 - 50
Very Likely	50 - 75
Most Likely	> 75



### DEFINITION/CRITERIA

#### Rain/ Snow \*

Heavy: 64.5 to 115.5 mm/cm \*

Very Heavy: 115.6 to 204.4 mm/cm \*

Extremely Heavy: > 204.4 mm/cm \*

#### Heat Wave

When maximum temperature of a station reaches  $\geq 40^\circ \text{C}$  for plains and  $\geq 30^\circ \text{C}$  for hilly regions

(a) Based on Departure from normal

Heat Wave: Maximum Temperature Departure from normal  $4.5^\circ \text{C}$  to  $6.4^\circ \text{C}$ .

Severe Heat Wave: Maximum Temperature Departure from normal  $\geq 6.5^\circ \text{C}$

(b). Based on Actual maximum temperature

Heat Wave: When actual maximum temperature  $\geq 45^\circ \text{C}$ .

Severe Heat Wave: When actual maximum temperature  $\geq 47^\circ \text{C}$

(c). Criteria for heat wave for coastal stations

When maximum temperature departure is  $> 4.5^\circ \text{C}$  from normal. Heat Wave may be described provided maximum temperature  $\geq 37^\circ \text{C}$

#### Warm Night

When maximum temperature remains  $40^\circ \text{C}$

Warm Night: When minimum temperature departure  $4.5^\circ \text{C}$  to  $6.4^\circ \text{C}$ .

Severe Warm Night: When minimum temperature departure  $> 6.4^\circ \text{C}$ .

#### Cold Wave

When minimum temperature of a station  $\leq 10^\circ \text{C}$  for plains and  $\leq 0^\circ \text{C}$  for hilly regions.

(a). Based on departure

Cold Wave: Minimum Temperature Departure from normal  $-4.5^\circ \text{C}$  to  $-6.4^\circ \text{C}$ .

Severe Cold Wave: Minimum Temperature Departure from normal  $\leq -6.5^\circ \text{C}$

(b) Based on actual Minimum Temperature (for Plains only)

Cold Wave : When Minimum Temperature is  $\leq 4.0^\circ \text{C}$

Severe Cold Wave: When Minimum Temperature is  $\leq 2.0^\circ \text{C}$

(c) For Coastal Stations

When Minimum Temperature departure is  $\leq -4.5^\circ \text{C}$  & actual Minimum Temperature is  $\leq 15^\circ \text{C}$

#### Cold Day

When minimum temperature of a station  $\leq 10^\circ \text{C}$  for plains and  $\leq 0^\circ \text{C}$  for hilly regions

Based on departure

Cold Day: Maximum Temperature Departure from normal  $-4.5^\circ \text{C}$  to  $-6.4^\circ \text{C}$ .

Severe Cold Day: Maximum Temperature Departure from normal  $\leq -6.5^\circ \text{C}$

#### Fog

Phenomenon of small droplets suspended in air and the horizontal visibility  $< 1 \text{ km}$

Moderate Fog: When the visibility between 500-200 metres

Dense Fog: when the visibility between 50- 200 metres

Very Dense Fog: when the visibility  $< 50$  metres

#### Thunderstorm

Sudden electrical discharges manifested by a flash of light (Lightning) and a sharp rumbling sound (thunder)

#### Dust/Sand Storm

An ensemble of particles of dust or sand energetically lifted to great heights by a strong and turbulent wind.

#### Frost

Ice deposits on ground

Air temperature  $\leq 4^\circ \text{C}$  ( over Plains)

#### Squall

A strong wind that rises suddenly, lasts for atleast 1 minute.

Moderate: Wind speed 52-61 kmph

Severe: Wind speed 62-87 kmph

Very Severe: Wind speed  $> 87$  kmph

#### Sea State

Effect of various waves in the sea over specific area

Rough to very rough: Wind speed 41-62 kmph (22-33 knots) & Wave height 2.5-6 metre

High to very high: Wind speed 63-117 kmph ( 34-63 knots) & Wave height 6-14 metre

Phenomenal: Wind speed  $> 117$  kmph ( $> 63$  knots) & Wave height  $> 14$  metre

#### Cyclone

Cyclonic Storm: Wind speed 62-87 kmph (34-47 knots)

Severe Cyclonic Storm: Wind speed 88-117 kmph (48-63 knots)

Very Severe Cyclonic Storm: Wind speed 118-165 kmph (64 - 89 knots)

Extremely Severe Cyclonic Storm: Wind speed 166-220 kmph (90 -119 knots)

Super Cyclone Storm: Wind speed  $> 220$  kmph ( $> 119$  knots)

\* Red colour warning does not mean "Red Alert", Red colour warning means "Take Action".  
Forecast and Warning for any day is valid from 0830 hours IST of day till 0830 hours IST of next day.  
For more details, kindly visit <https://mausam.imd.gov.in> or contact: 011-2434-4599  
(Service to the Nation since 1875)

**Hot and Humid:** When maximum temperatures remains  $3^\circ \text{C}$  above normal along with the above normal relative humidity.