

Thursday, May 01, 2025
Time of Issue: 2040 hours IST
(NIGHT)

All India Impact Based Weather Warning Bulletin

Weather Warnings for next 7 days is given below:

(Graphics for warnings & rainfall distribution (Table 1) are given below the text:

01st May (Day 1)

- ❖ **Thunderstorms accompanied with Heavy Rainfall** very likely at isolated places over Assam & Meghalaya, Kerala & Mahe, South Interior Karnataka.
- ❖ **Thundersquall accompanied with wind speed reaching 50-60 kmph** very likely at isolated places over Jammu-Kashmir-Ladakh-Gilgit-Baltistan-Muzaffarabad, Rajasthan, Coastal Andhra Pradesh & Yanam, South Interior Karnataka.
- ❖ **Thunderstorms accompanied with gusty winds (speed reaching 40-50kmph gusting to 60 kmph)** very likely at isolated places over Himachal Pradesh, Uttarakhand, Punjab, Haryana-Chandigarh-Delhi, Uttar Pradesh, Madhya Pradesh, Chhattisgarh, Gangetic West Bengal, Odisha, Bihar, Jharkhand, Assam & Meghalaya, Kerala & Mahe, Coastal Andhra Pradesh & Yanam, Rayalaseema, North Interior Karnataka.
- ❖ **Thunderstorms accompanied with gusty winds (speed reaching 30-40kmph gusting to 50 kmph)** very likely at isolated places over Vidarbha, Sub-Himalayan West Bengal & Sikkim, Arunachal Pradesh, Tamil Nadu, Puducherry & Karaikal, Telangana.
- ❖ **Thunderstorm & Lightning** very likely at isolated places over Lakshadweep, Coastal Karnataka.
- ❖ **Hot and Humid conditions** very likely at isolated places over Gujarat Region, Saurashtra & Kutch, Madhya Maharashtra, Marathwada, Coastal Andhra Pradesh, Rayalaseema, Tamilnadu & Puducherry and Kerala.
- ❖ **Heat Wave conditions** very likely at isolated places over Jammu division and West Rajasthan.
- ❖ **Dust Storm/Thunderstorms accompanied with gusty winds (speed reaching 40-50kmph gusting to 60 kmph)** very likely at isolated places over Punjab, Haryana-Chandigarh-Delhi, Rajasthan.
- ❖ **Thunderstorm accompanied with Hailstorm** very likely at isolated places over Himachal Pradesh, Uttarakhand, East Uttar Pradesh, Odisha, Chhattisgarh, Sikkim, Bihar.

02nd May (Day 2)

- ❖ **Thunderstorms accompanied with Heavy Rainfall** very likely at isolated places over Odisha.
- ❖ **Thundersquall accompanied with wind speed reaching 50-60 kmph** very likely at isolated places over Rajasthan, East Madhya Pradesh, Chhattisgarh, Odisha.
- ❖ **Thunderstorms accompanied with gusty winds (speed reaching 40-50kmph gusting to 60 kmph)** very likely at isolated places over Gangetic West Bengal, Odisha, Jharkhand, Uttarakhand, Punjab, Himachal Pradesh, West Madhya Pradesh, Vidarbha and Coastal Karnataka, East Uttar Pradesh, West Uttar Pradesh, Haryana, Chandigarh & Delhi, Coastal Andhra Pradesh and South Interior Karnataka.
- ❖ **Thunderstorms accompanied with gusty winds (speed reaching 30-40kmph gusting to 50 kmph)** very likely at isolated places over Assam & Meghalaya, Nagaland, Manipur, Mizoram & Tripura, Telangana, Rayalaseema.
- ❖ **Thunderstorm & Lightning** very likely at isolated places over West Bengal & Sikkim, Arunachal Pradesh, Kerala & Mahe, Lakshadweep, Coastal Karnataka.
- ❖ **Hot and Humid conditions** very likely at isolated places over Coastal Andhra Pradesh, Rayalaseema, Kerala, Tamil Nadu, Puducherry & Karaikal.
- ❖ **Dust Storm/Thunderstorms accompanied with gusty winds (speed reaching 40-50kmph gusting to 60 kmph)** very likely at isolated places over Punjab, Haryana-Chandigarh-Delhi, Rajasthan.
- ❖ **Thunderstorm accompanied Hailstorm** very likely at isolated places over East Madhya Pradesh, Chhattisgarh, Odisha.
- ❖ **Squally wind with speed 45 kmph to 50 kmph gusting to 55 kmph** very likely to prevail over along and off south Gujarat coast.

03rd May (Day 3)

- ❖ **Thunderstorms accompanied with Heavy Rainfall** very likely at isolated places over Odisha
- ❖ **Thundersquall accompanied with wind speed reaching 50-60 kmph** likely at isolated places over Uttarakhand, East Madhya Pradesh, Vidarbha, Chhattisgarh, Odisha.
- ❖ **Thunderstorms accompanied with gusty winds (speed reaching 40-50kmph gusting to 60 kmph)** likely at isolated places Jammu-Kashmir-Ladakh-Gilgit-Baltistan-Muzaffarabad, Himachal Pradesh, Punjab, Haryana-Chandigarh-Delhi, West Uttar Pradesh, Rajasthan, West Madhya Pradesh, Sub-Himalayan West Bengal & Sikkim, Gangetic West Bengal, Jharkhand, Coastal Andhra Pradesh & Yanam, Interior Karnataka.
- ❖ **Thunderstorms accompanied with gusty winds (speed reaching 30-40kmph gusting to 50 kmph)** likely at isolated places over East Uttar Pradesh, Bihar, Assam & Meghalaya, Nagaland, Manipur, Mizoram & Tripura, Gujarat state, Telangana, Rayalaseema.
- ❖ **Thunderstorm & Lightning** likely at isolated places over Arunachal Pradesh, Kerala & Mahe, Coastal Karnataka.
- ❖ **Dust Storm/Thunderstorms accompanied with gusty winds (speed reaching 30-40kmph gusting to 50 kmph)** likely at isolated places over Rajasthan.
- ❖ **Thunderstorm accompanied with Hailstorm** likely at isolated places over East Madhya Pradesh, Uttarakhand, Chhattisgarh, Bihar, Sub-Himalayan West Bengal & Sikkim.
- ❖ **Squally wind with speed 45 kmph to 50 kmph gusting to 55 kmph** very likely to prevail over some parts of northeast Arabian sea and off north Gujarat coast, over gulf of Mannar and adjoining Comorin area.

04th May (Day 4)

- ❖ **Thundersquall accompanied with wind speed reaching 50-60 kmph** likely at isolated places over West Rajasthan, East Madhya Pradesh, Vidarbha, Chhattisgarh.
- ❖ **Thunderstorms accompanied with gusty winds (speed reaching 40-50kmph gusting to 60 kmph)** likely at isolated places over Himachal Pradesh, Uttarakhand, Punjab, Haryana-Chandigarh-Delhi, West Uttar Pradesh, East Rajasthan, West Madhya Pradesh, Jharkhand, Kerala & Mahe, Coastal Andhra Pradesh & Yanam, Interior Karnataka.
- ❖ **Thunderstorms accompanied with gusty winds (speed reaching 30-40kmph gusting to 50 kmph)** likely at isolated places over Jammu-Kashmir-Ladakh-Gilgit-Baltistan-Muzaffarabad, West Bengal & Sikkim, Bihar, Assam & Meghalaya, Gujarat state, Telangana, Rayalaseema.
- ❖ **Thunderstorm & Lightning** likely at isolated places over East Uttar Pradesh, Arunachal Pradesh, Tamil Nadu, Puducherry & Karaikal, Coastal Karnataka, Madhya Maharashtra, Marathwada, Nagaland, Manipur, Mizoram & Tripura.
- ❖ **Dust Storm/Thunderstorms accompanied with gusty winds (speed reaching 30-40kmph gusting to 50 kmph)** likely at isolated places over Rajasthan.
- ❖ **Squally wind with speed 45 kmph to 50 kmph gusting to 55 kmph** likely to prevail over central parts of north Arabian sea, over gulf of Mannar & adjoining Comorin area.

05th May (Day 5)

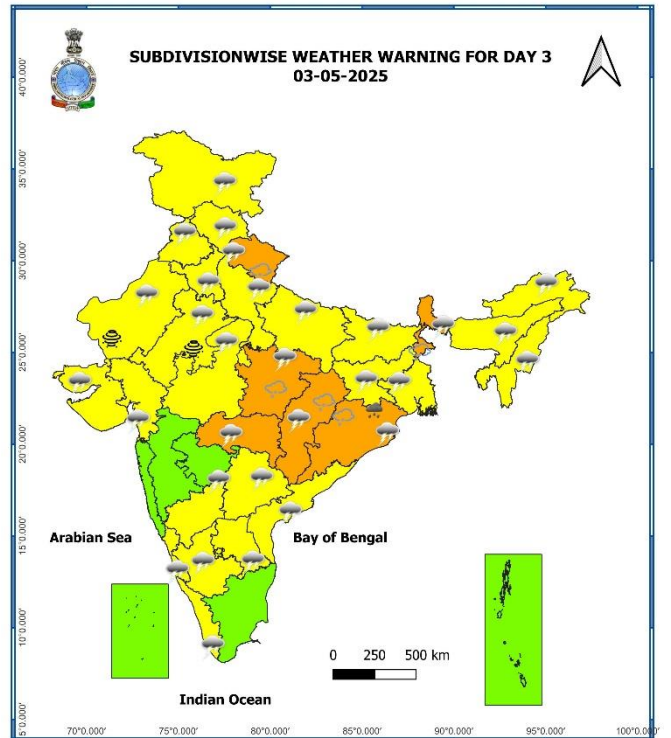
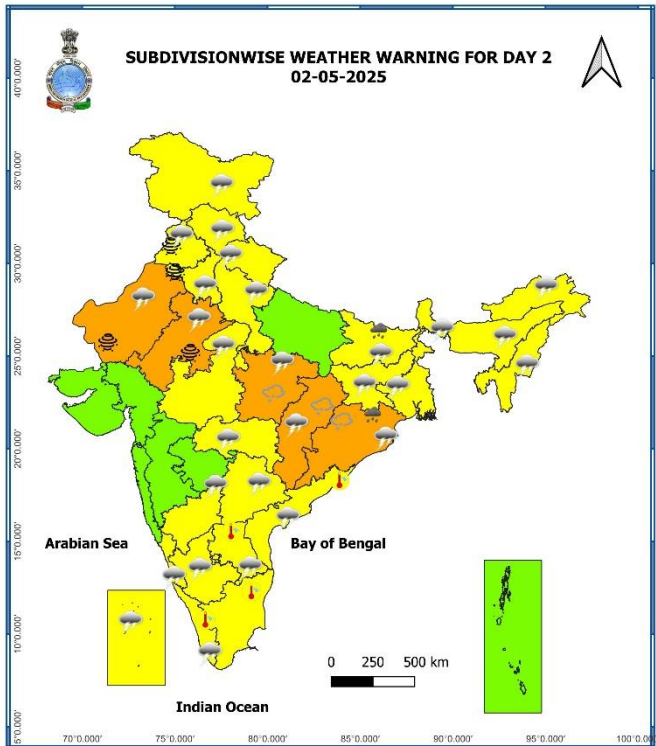
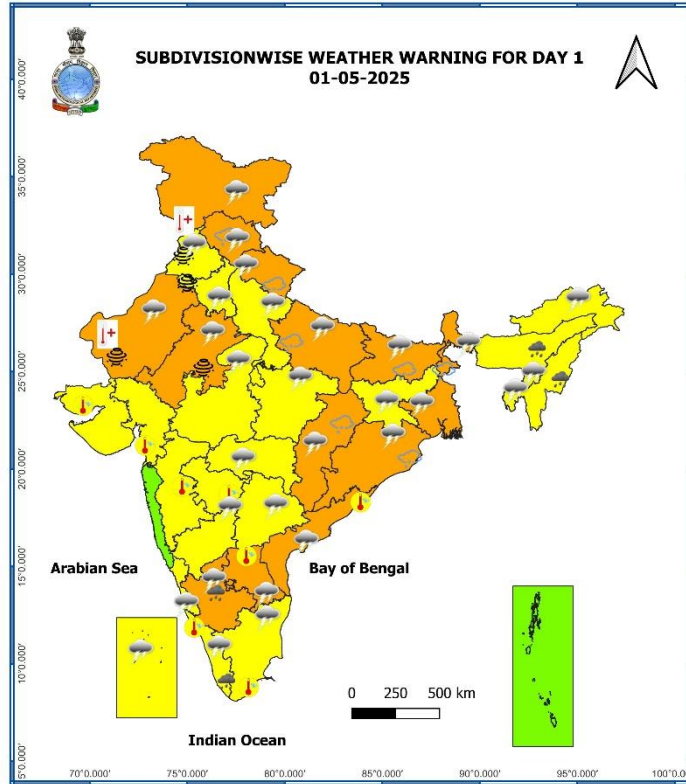
- ❖ **Thunderstorms accompanied with Heavy Rainfall** very likely at isolated places over Arunachal Pradesh, Assam & Meghalaya.
- ❖ **Thunderstorms accompanied with gusty winds (speed reaching 40-50kmph gusting to 60 kmph)** likely at isolated places over Himachal Pradesh, Uttarakhand, Punjab, Haryana-Chandigarh-Delhi, West Uttar Pradesh, Rajasthan, Madhya Pradesh, Vidarbha, Chhattisgarh, Kerala & Mahe, Coastal Andhra Pradesh & Yanam, Interior Karnataka.
- ❖ **Thunderstorms accompanied with gusty winds (speed reaching 30-40kmph gusting to 50 kmph)** likely at isolated places over Jammu-Kashmir-Ladakh-Gilgit-Baltistan-Muzaffarabad, Bihar, Assam & Meghalaya, Konkan & Goa, Gujarat state, Telangana, Rayalaseema.
- ❖ **Thunderstorm & Lightning** likely at isolated places over East Uttar Pradesh, Sub-Himalayan West Bengal & Sikkim, Madhya Maharashtra, Marathwada, Nagaland, Manipur, Mizoram & Tripura, Tamil Nadu, Puducherry & Karaikal, Coastal Karnataka.
- ❖ **Dust Storm/Thunderstorms accompanied with gusty winds (speed reaching 30-40kmph gusting to 50 kmph)** likely at isolated places over Rajasthan.
- ❖ **Squally wind with speed 45 kmph to 50 kmph gusting to 55 kmph** likely to prevail over many parts of north Arabian sea.

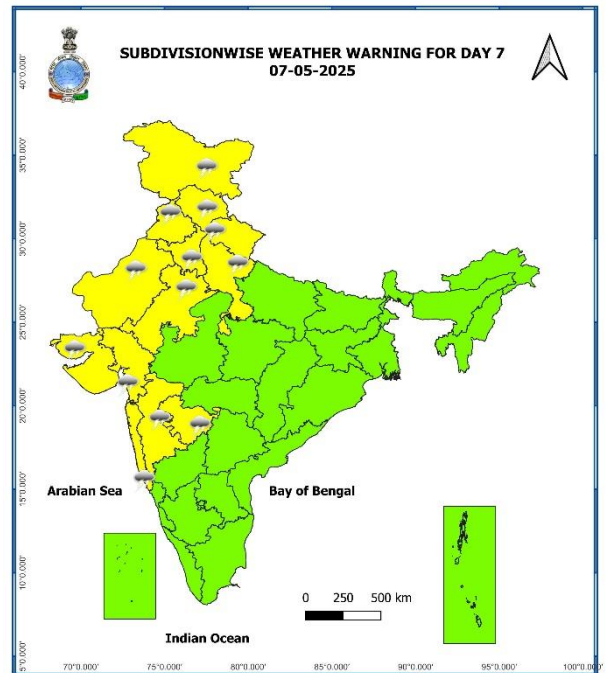
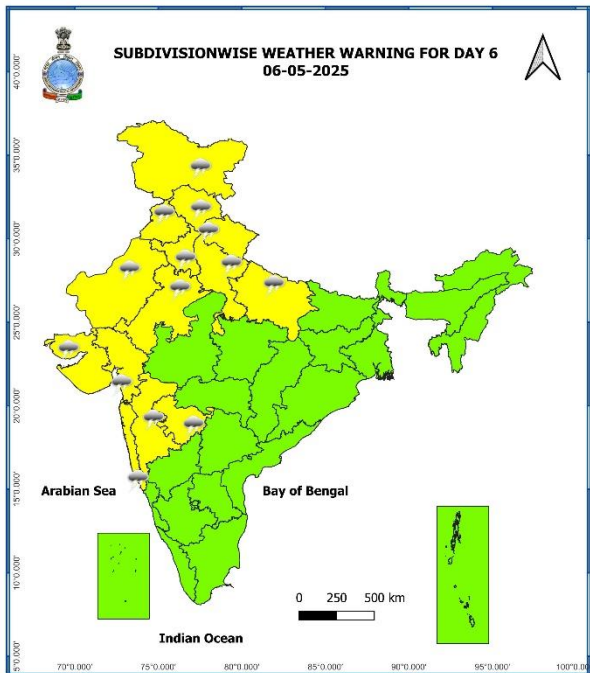
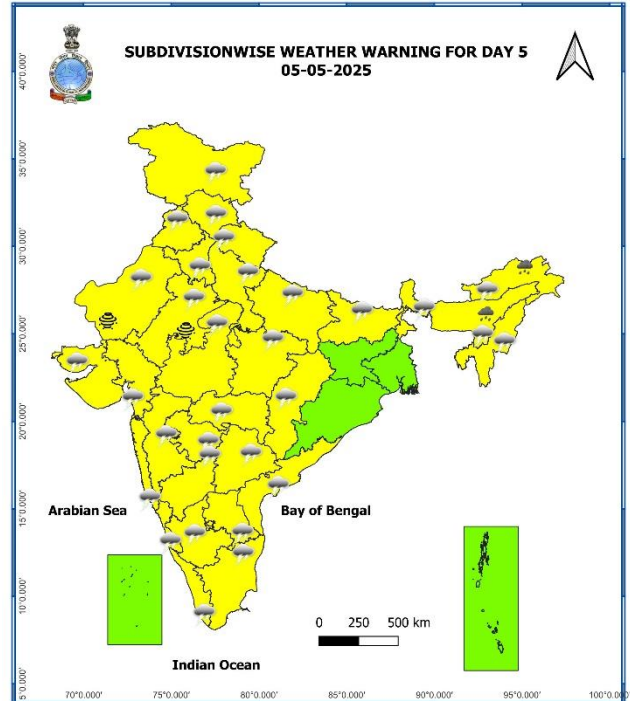
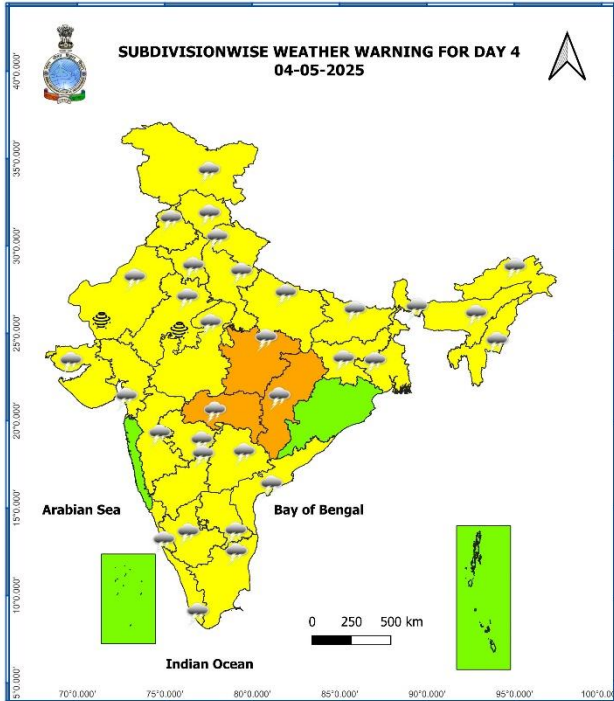
06th May (Day 6)

- ❖ **Thunderstorms accompanied with gusty winds (speed reaching 40-50kmph gusting to 60 kmph)** likely at isolated places over Himachal Pradesh, Uttarakhand, Rajasthan.
- ❖ **Thunderstorms accompanied with gusty winds (speed reaching 30-40kmph gusting to 50 kmph)** likely at isolated places over Jammu-Kashmir-Ladakh-Gilgit-Baltistan-Muzaffarabad, Punjab, Haryana-Chandigarh-Delhi, Konkan & Goa, Gujarat state.
- ❖ **Thunderstorm & Lightning** likely at isolated places over Uttar Pradesh, Madhya Maharashtra, Marathwada.

07th May (Day 7)

- ❖ **Thunderstorms accompanied with gusty winds (speed reaching 40-50kmph gusting to 60 kmph)** likely at isolated places over Uttarakhand, Rajasthan.
- ❖ **Thunderstorms accompanied with gusty winds (speed reaching 30-40kmph gusting to 50 kmph)** likely at isolated places over Jammu-Kashmir-Ladakh-Gilgit-Baltistan-Muzaffarabad, Himachal Pradesh, Punjab, Haryana-Chandigarh-Delhi, Konkan & Goa, Gujarat state.
- ❖ **Thunderstorm & Lightning** likely at isolated places over West Uttar Pradesh, Madhya Maharashtra, Marathwada.





- Action may be taken based on **ORANGE AND RED** COLOUR warnings.
- Vulnerable regions likely urban and hilly areas action may be initiated for heavy rainfall warning.
- As the lead period increases forecast accuracy decreases.

Table-1

7 Days Rainfall Forecast

S. No.	Subdivision	01-May	02-May	03-May	04-May	05-May	06-May	07-May
		Day 1	Day 2	Day 3	Day 4	Day 5	Day 6	Day 7
1	ANDAMAN & NICOBAR ISLANDS	SCT	SCT	FWS	FWS	FWS	WS	FWS
2	ARUNACHAL PRADESH	SCT	SCT	SCT	SCT	FWS	FWS	FWS
3	ASSAM & MEGHALAYA	FWS	SCT	SCT	FWS	FWS	WS	WS
4	NAGALAND, MANIPUR, MIZORAM & TRIPURA	FWS	FWS	SCT	SCT	SCT	FWS	FWS
5	SUB-HIMALAYAN WEST BENGAL & SIKKIM	FWS	SCT	FWS	FWS	FWS	FWS	FWS
6	GANGETIC WEST BENGAL	FWS	ISOL	FWS	SCT	ISOL	ISOL	ISOL
7	ODISHA	SCT	SCT	FWS	SCT	ISOL	ISOL	ISOL
8	JHARKHAND	SCT	SCT	SCT	SCT	SCT	ISOL	ISOL
9	BIHAR	SCT	SCT	ISOL	ISOL	ISOL	ISOL	ISOL
10	EAST UTTAR PRADESH	ISOL	ISOL	ISOL	SCT	SCT	SCT	ISOL
11	WEST UTTAR PRADESH	ISOL	ISOL	SCT	SCT	SCT	SCT	ISOL
12	UTTARAKHAND	SCT	SCT	FWS	FWS	FWS	FWS	FWS
13	HARYANA CHANDIGARH & DELHI	SCT	ISOL	SCT	SCT	SCT	ISOL	SCT
14	PUNJAB	SCT	ISOL	SCT	SCT	SCT	ISOL	SCT
15	HIMACHAL PRADESH	ISOL	SCT	SCT	SCT	FWS	FWS	SCT
16	JAMMU & KASHMIR AND LADAKH	SCT	SCT	SCT	SCT	SCT	ISOL	DRY
17	WEST RAJASTHAN	ISOL	ISOL	ISOL	ISOL	ISOL	ISOL	ISOL
18	EAST RAJASTHAN	ISOL	ISOL	ISOL	ISOL	ISOL	ISOL	ISOL
19	WEST MADHYA PRADESH	ISOL	ISOL	ISOL	ISOL	ISOL	ISOL	ISOL
20	EAST MADHYA PRADESH	ISOL	ISOL	SCT	SCT	ISOL	ISOL	ISOL
21	GUJARAT REGION	DRY	DRY	ISOL	ISOL	ISOL	ISOL	ISOL
22	SAURASHTRA & KUTCH	DRY	DRY	ISOL	ISOL	ISOL	ISOL	ISOL
23	KONKAN & GOA	DRY	DRY	DRY	ISOL	ISOL	ISOL	ISOL
24	MADHYA MAHARASHTRA	ISOL	DRY	ISOL	ISOL	ISOL	ISOL	ISOL
25	MARATHAWADA	ISOL	ISOL	ISOL	ISOL	ISOL	ISOL	ISOL
26	VIDARBHA	ISOL	ISOL	SCT	SCT	ISOL	ISOL	ISOL
27	CHHATTISGARH	ISOL	SCT	SCT	SCT	ISOL	ISOL	ISOL
28	COASTAL ANDHRA PRADESH & YANAM	ISOL	SCT	SCT	ISOL	ISOL	ISOL	ISOL
29	TELANGANA	ISOL	SCT	ISOL	ISOL	SCT	SCT	SCT
30	RAYALASEEMA	ISOL	ISOL	SCT	ISOL	ISOL	SCT	ISOL
31	TAMILNADU PUDUCHERRY & KARAIKAL	ISOL	ISOL	ISOL	SCT	SCT	SCT	SCT
32	COASTAL KARNATAKA	ISOL	ISOL	ISOL	ISOL	ISOL	ISOL	ISOL
33	NORTH INTERIOR KARNATAKA	ISOL	ISOL	ISOL	ISOL	ISOL	SCT	SCT
34	SOUTH INTERIOR KARNATAKA	SCT	SCT	SCT	SCT	SCT	SCT	SCT
35	KERALA & MAHE	SCT	SCT	SCT	SCT	FWS	FWS	FWS
36	LAKSHADWEEP	SCT	SCT	SCT	DRY	DRY	SCT	SCT

• As the lead period increases forecast accuracy decreases.

Impact expected and action suggested due to isolated thunderstorm with lightning/gusty & Squally winds & Hailstorm over

- ❖ **Thundersquall (wind speed reaching 50-60 kmph)** likely over Jammu-Kashmir-Ladakh-Gilgit-Baltistan-Muzaffarabad, Coastal Andhra Pradesh & Yanam, South Interior Karnataka on 01st; Rajasthan on 01st & 02nd; Odisha 02rd & 03rd; East Madhya Pradesh, Chhattisgarh during 02nd -04th; Vidarbha on 03rd & 04th May.
- ❖ **Isolated hailstorm** activity likely over Sikkim on 01st & 03rd; Bihar, East Uttar Pradesh, Uttarakhand, Himachal Pradesh on 01st; East Madhya Pradesh on 02nd & 03rd; Odisha, Chhattisgarh during 01st -03rd May.

Impact expected:

- Breaking of tree branches, uprooting of large avenue trees. Large dead limbs blown from trees. Damage to Standing crops.
- Minor to Major damage to banana and papaya trees.
- Minor to major damage to power and communication lines due to breaking of branches.
- Strong wind/hail may damage plantation, horticulture and standing crops.
- Hail may injure people and cattle at open places.
- Partial damage to vulnerable structures due to strong winds.
- Minor damage to kutcha houses/walls and huts.
- Loose objects may fly.

Action suggested:

- People are advised to keep a watch on the weather for worsening conditions and be ready to move to safer places accordingly.
- Stay indoors, close windows & doors and avoid travel if possible.
- Take safe shelters; do not take shelter under trees.
- Do not lie on concrete floors and do not lean against concrete walls.
- Unplug electrical/ electronic appliances.
- Immediately get out of water bodies.
- Keep away from all the objects that conduct electricity.

Impact expected and action suggested due to Heat wave conditions over

- ❖ **Heat wave to severe heat wave conditions** very likely in isolated pockets of Jammu division, southwest Rajasthan on 01st May.

Yellow alert Areas

- Moderate temperature & heat is tolerable for general public but moderate health concern likely for vulnerable people e.g. infants, elderly, people with chronic diseases.
- Avoid heat exposure.
- Wear lightweight, light colour, loose, cotton clothes.
- Cover your head, use a cloth, hat or umbrella.

Agromet advisories for likely impact of Hailstorm / Heavy Rainfall / Gusty Winds / Heat wave
(Based on the IBF and advisories issued by different AMFUs)

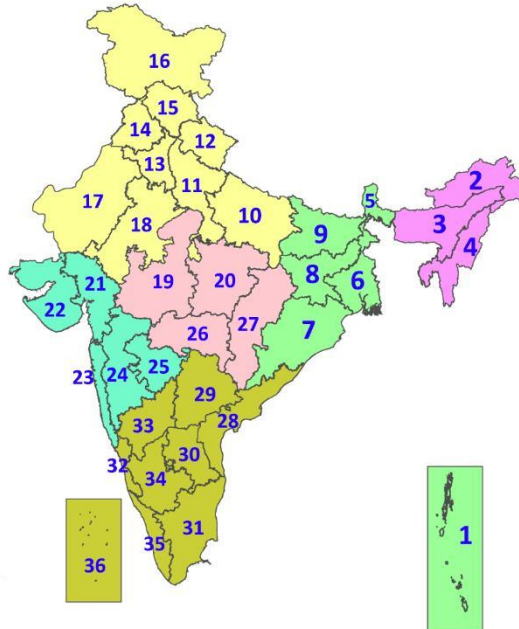
- In **Odisha, Kerala and South Interior Karnataka**, make provision to drain out excess water from standing crop and vegetable fields.
- In **Sub Himalayan West Bengal and Sikkim, Odisha, Bihar, Uttarakhand, East Uttar Pradesh, Chhattisgarh and East Madhya Pradesh**, use hail nets and hail caps to prevent mechanical damage in vegetables and orchards due to the possibility of hailstorms.
- To protect standing crops, vegetables and orchards from the adverse effects of heat waves and high temperatures, apply light and frequent irrigation in the evening.
- Shift the harvested produce in safer places or cover the produce with tarpaulin sheets in the fields. Tie the harvested crops properly and cover them to minimise the risk of displacement due to strong surface winds.
- Provide mechanical support to horticultural crops and staking to vegetables to avoid lodging.

Livestock / Poultry / Fishery

- Keep the animals inside the shed during heavy rainfall / hailstorm and provide them balanced feed.
- Store feed and fodder in a safe place to prevent spoilage.
- To reduce the effect of heat wave/high temperature, cover the roof of poultry sheds with grass. Also, provide clean, hygienic and plenty of drinking water to animals.
- Construct an outlet with proper netting around the ponds to drain out excess water, thereby preventing fish from escaping in case of overflow.
-

LEGENDS

1. अंडमान और निकोबार द्वीपसमूह
2. अरुणाचल प्रदेश
3. असम और मेघालय
4. नागालैंड, मणिपुर, मिजोरम और त्रिपुरा
5. उप-हिमालयी पश्चिम बंगाल और सिक्किम
6. गंगीय पश्चिम बंगाल
7. ओडिशा
8. झारखंड
9. बिहार
10. पूर्वी उत्तर प्रदेश
11. पश्चिम उत्तर प्रदेश
12. उत्तराखंड
13. हरियाणा, चंडीगढ़ और दिल्ली
14. पंजाब
15. हिमाचल प्रदेश
16. जम्मू और कश्मीर और लद्दाख
17. पश्चिम राजस्थान
18. पूर्वी राजस्थान
19. पश्चिम मध्य प्रदेश
20. पूर्वी मध्य प्रदेश
21. गुजरात
22. सौराष्ट्र
23. कोंकण और गोवा
24. मध्य महाराष्ट्र
25. मराठवाड़ा
26. विदर्भ
27. छत्तीसगढ़
28. तटीय आंध्र प्रदेश और यनम
29. तेलंगाना
30. रायलसीमा
31. तमिलनाडु, पुडुचेरी और कराईकल
32. तटीय कर्नाटक
33. आंतरिक उत्तरी कर्नाटक
34. आंतरिक दक्षिणी कर्नाटक
35. केरल और माहे
36. लक्षद्वीप



1. Andaman & Nicobar Islands
2. Arunachal Pradesh
3. Assam & Meghalaya
4. Nagaland, Manipur, Mizoram & Tripura
5. Sub-Himalayan West Bengal & Sikkim
6. Gangetic West Bengal
7. Odisha
8. Jharkhand
9. Bihar
10. East Uttar Pradesh
11. West Uttar Pradesh
12. Uttarakhand
13. Haryana, Chandigarh & Delhi
14. Punjab
15. Himachal Pradesh
16. Jammu & Kashmir and Ladakh
17. West Rajasthan
18. East Rajasthan
19. West Madhya Pradesh
20. East Madhya Pradesh
21. Gujarat
22. Saurashtra
23. Konkan & Goa
24. Madhya Maharashtra
25. Marathwada
26. Vidarbha
27. Chhattisgarh
28. Coastal Andhra Pradesh & Yanam
29. Telangana
30. Rayalaseema
31. Tamilnadu, Puducherry & Karaikal
32. Coastal Karnataka
33. North Interior Karnataka
34. South Interior Karnataka
35. Kerala & Mahe
36. Lakshadweep

SPATIAL DISTRIBUTION (% of Stations reporting)

% Stations	Category	% Stations	Category
76-100	Widespread (WS/Most Places)	26-50	Scattered (SCT/A Few Places)
51-75	Fairly Widespread (FWS/Many Places)	1-25	Isolated (ISOL)

- Fog

Heavy Rain

Very Heavy Rain

Extremely Heavy Rain

Thunder & Lightning

Hailstorm

Dust Raising Winds

Heavy Snow

Dust Storm

Heat Wave

Warm Night

Hot Day

Hot & Humid

Strong Surface Winds

Cold Wave

Cold Day

Ground Frost

COLOUR CODED WARNING

No Warning (No Action)
Watch (Be Aware)
Alert (Be Prepared To Take Action)
Warning (Take Action)

Probabilistic Forecast

Terms	Probability of Occurrence (%)
Unlikely	< 25
Likely	25 - 50
Very Likely	50 - 75
Most Likely	> 75

DEFINITION/CRITERIA

Rain/ Snow *

Heavy: 64.5 to 115.5 mm/cm *

Very Heavy: 115.6 to 204.4 mm/cm *

Extremely Heavy: > 204.4 mm/cm *

Heat Wave

When maximum temperature of a station reaches $\geq 40^{\circ}\text{C}$ for plains and $\geq 30^{\circ}\text{C}$ for hilly regions

(a) Based on Departure from normal

Heat Wave: Maximum Temperature Departure from normal 4.5°C to 6.4°C .

Severe Heat Wave: Maximum Temperature Departure from normal $\geq 6.5^{\circ}\text{C}$

(b). Based on Actual maximum temperature

Heat Wave: When actual maximum temperature $\geq 45^{\circ}\text{C}$.

Severe Heat Wave: When actual maximum temperature $\geq 47^{\circ}\text{C}$

(c). Criteria for heat wave for coastal stations

When maximum temperature departure is $> 4.5^{\circ}\text{C}$ from normal. Heat Wave may be described provided maximum temperature $\geq 37^{\circ}\text{C}$

Warm Night

When maximum temperature remains 40°C

Warm Night: When minimum temperature departure 4.5°C to 6.4°C .

Severe Warm Night: When minimum temperature departure $> 6.4^{\circ}\text{C}$.

Cold Wave

When minimum temperature of a station $\leq 10^{\circ}\text{C}$ for plains and $\leq 0^{\circ}\text{C}$ for hilly regions.

(a). Based on departure

Cold Wave: Minimum Temperature Departure from normal -4.5°C to -6.4°C .

Severe Cold Wave: Minimum Temperature Departure from normal $\leq -6.5^{\circ}\text{C}$

(b) Based on actual Minimum Temperature (for Plains only)

Cold Wave : When Minimum Temperature is $\leq 4.0^{\circ}\text{C}$

Severe Cold Wave: When Minimum Temperature is $\leq 2.0^{\circ}\text{C}$

(c) For Coastal Stations

When Minimum Temperature departure is $\leq -4.5^{\circ}\text{C}$ & actual Minimum Temperature is $\leq 15^{\circ}\text{C}$

Cold Day

When minimum temperature of a station $\leq 10^{\circ}\text{C}$ for plains and $\leq 0^{\circ}\text{C}$ for hilly regions

Based on departure

Cold Day: Maximum Temperature Departure from normal -4.5°C to -6.4°C .

Severe Cold Day: Maximum Temperature Departure from normal $\leq -6.5^{\circ}\text{C}$

Fog

Phenomenon of small droplets suspended in air and the horizontal visibility $< 1\text{km}$

Moderate Fog: When the visibility between 500-200 metres

Dense Fog: when the visibility between 50- 200 metres

Very Dense Fog: when the visibility < 50 metres

Thunderstorm

Sudden electrical discharges manifested by a flash of light (Lightning) and a sharp rumbling sound (thunder)

Dust/Sand Storm

An ensemble of particles of dust or sand energetically lifted to great heights by a strong and turbulent wind.

Frost

Ice deposits on ground

Air temperature $\leq 4^{\circ}\text{C}$ (over Plains)

Squall

A strong wind that rises suddenly, lasts for atleast 1 minute.

Moderate: Wind speed 52-61 kmph

Severe: Wind speed 62-87 kmph

Very Severe: Wind speed > 87 kmph

Sea State

Effect of various waves in the sea over specific area

Rough to very rough: Wind speed 41-62 kmph (22-33 knots) & Wave height 2.5-6 metre

High to very high: Wind speed 63-117 kmph (34-63 knots) & Wave height 6-14 metre

Phenomenal: Wind speed > 117 kmph (> 63 knots) & Wave height > 14 metre

Cyclone

Cyclonic Storm: Wind speed 62-87 kmph (34-47 knots)

Severe Cyclonic Storm: Wind speed 88-117 kmph (48-63 knots)

Very Severe Cyclonic Storm: Wind speed 118-165 kmph (64 - 89 knots)

Extremely Severe Cyclonic Storm: Wind speed 166-220 kmph (90 -119 knots)

Super Cyclone Storm: Wind speed > 220 kmph (> 119 knots)

* Red colour warning does not mean "Red Alert", Red colour warning means "Take Action".

Forecast and Warning for any day is valid from 0830 hours IST of day till 0830 hours IST of next day.

For more details, kindly visit <https://mausam.imd.gov.in> or contact: 011-2434-4599

(Service to the Nation since 1875)

Hot and Humid: When maximum temperatures remains 3°C above normal along with the above normal relative humidity.