

Sunday, May 18, 2025
Time of Issue: 2000 hours IST
(NIGHT)

All India Impact Based Weather Warning Bulletin

Weather Warnings for next 7 days is given below:

(Graphics for warnings & rainfall distribution (Table 1) are given below the text:

18th May (Day 1)

- ❖ **Heavy to Very Heavy Rainfall** very likely at isolated places over Assam & Meghalaya, South Interior Karnataka and Sub Himalayan West Bengal & Sikkim.
- ❖ **Heavy Rainfall** very likely at isolated places over Arunachal Pradesh, Bihar, Coastal Karnataka, Gangetic West Bengal, Kerala & Mahe, Konkan & Goa, Madhya Maharashtra, Nagaland, Manipur, Mizoram and Tripura, North Interior Karnataka, Rayalaseema and Tamil Nadu Puducherry & Karaikal.
- ❖ **Thundersquall with wind speed reaching(50-60kmph)** very likely at isolated places over Bihar, Gangetic West Bengal, Jharkhand, Maharashtra, Odisha and Rayalaseema.
- ❖ **Thunderstorm accompanied with lightning & gusty winds(40-50kmph)** very likely at isolated places over Assam & Meghalaya, Chhattisgarh, Coastal Andhra Pradesh, East Rajasthan, Haryana, Chandigarh & Delhi, Jammu-Kashmir-Ladakh-Gilgit-Baltistan-Muzaffarabad, Konkan & Goa, Madhya Pradesh, Nagaland, Manipur, Mizoram and Tripura, Punjab, Sub Himalayan West Bengal & Sikkim, Tamil Nadu Puducherry & Karaikal and Uttarakhand.
- ❖ **Thunderstorm accompanied with lightning & gusty winds(30-40kmph)** very likely at isolated places over Gujarat Region, Himachal Pradesh, Kerala & Mahe, South Interior Karnataka, Telangana and West Uttar Pradesh.
- ❖ **Thunderstorm accompanied with Lightning** very likely at isolated places over Arunachal Pradesh, Coastal Karnataka, Lakshadweep and North Interior Karnataka.
- ❖ **Dust Storm** very likely at isolated places over Punjab.
- ❖ **Dust Raising Winds** very likely at isolated places over West Rajasthan.
- ❖ **Heat Wave conditions** very likely at isolated places over Jammu-Kashmir-Ladakh-Gilgit-Baltistan-Muzaffarabad and West Rajasthan.
- ❖ **Hot and Humid weather** very likely at isolated places over Odisha.
- ❖ **Warm Night conditions** very likely at isolated places over West Rajasthan.
- ❖ **Squally wind with speed 45 kmph to 50 kmph gusting to 55 kmph** likely to prevail along and off Oman coast, along and off South Sri Lanka coast, over Gulf of Mannar and adjoining Comorin area. **Squally weather with wind speed 35 kmph to 45 kmph gusting to 55 kmph** prevailing along and off Kerala, Karnataka coasts, Lakshadweep area and over few parts of southwest bay of Bengal.

19th May (Day 2)

- ❖ **Heavy to Very Heavy Rainfall** very likely at isolated places over Assam & Meghalaya, Interior Karnataka and Kerala & Mahe.
- ❖ **Heavy Rainfall** very likely at isolated places over Bihar, Coastal Karnataka, Konkan & Goa, Madhya Maharashtra, Rayalaseema, Sub Himalayan West Bengal & Sikkim and Tamil Nadu Puducherry & Karaikal.
- ❖ **Thunderstorm accompanied with Hailstorm** very likely at isolated places over Himachal Pradesh and Uttarakhand.
- ❖ **Thundersquall with wind speed reaching(50-60kmph)** very likely at isolated places over Bihar, Jharkhand, Rayalaseema and Vidarbha.
- ❖ **Thunderstorm accompanied with lightning & gusty winds(40-50kmph)** very likely at isolated places over Assam & Meghalaya, Chhattisgarh, Coastal Andhra Pradesh, East Rajasthan, Haryana, Chandigarh & Delhi, Himachal Pradesh, Jammu-Kashmir-Ladakh-Gilgit-Baltistan-Muzaffarabad, Konkan & Goa, Madhya Maharashtra, Madhya Pradesh, Nagaland, Manipur, Mizoram and Tripura, Odisha, Punjab, Tamil Nadu Puducherry & Karaikal, Uttar Pradesh, Uttarakhand and West Bengal & Sikkim.
- ❖ **Thunderstorm accompanied with lightning & gusty winds(30-40kmph)** very likely at isolated places over Kerala & Mahe, South Interior Karnataka and Telangana.
- ❖ **Thunderstorm accompanied with Lightning** very likely at isolated places over Arunachal Pradesh, Coastal Karnataka and Lakshadweep.
- ❖ **Dust Raising Winds** very likely at isolated places over West Rajasthan.
- ❖ **Heat Wave conditions** very likely at isolated places over West Rajasthan.
- ❖ **Hot and Humid weather** very likely at isolated places over Odisha.
- ❖ **Warm Night conditions** very likely at isolated places over West Rajasthan.
- ❖ **Squally wind with speed 45 kmph to 50 kmph gusting to 55 kmph** likely to prevail along and off Oman coast, along and off South Sri Lanka coast, over Gulf of Mannar and adjoining Comorin area. **Squally weather with wind speed 35 kmph to 45 kmph gusting to 55 kmph** prevailing along and off south Maharashtra, Goa, Kerala, Karnataka coasts, Lakshadweep area and over few parts of southwest Bay of Bengal.

20th May (Day 3)

- ❖ **Heavy to Very Heavy Rainfall with isolated Extremely Heavy Rainfall** very likely at isolated places over Costal Karnataka.
- ❖ **Heavy to Very Heavy Rainfall** very likely at isolated places over Assam & Meghalaya, Interior Karnataka, Kerala & Mahe, Konkan & Goa and Sub Himalayan West Bengal & Sikkim.
- ❖ **Heavy Rainfall** very likely at isolated places over Andhra Pradesh, Arunachal Pradesh, Bihar, Lakshadweep, Madhya Maharashtra, Marathwada and Tamil Nadu Puducherry & Karaikal.
- ❖ **Thunderstorm accompanied with Hailstorm** very likely at isolated places over Uttarakhand.
- ❖ **Thundersquall with wind speed reaching(50-60kmph)** very likely at isolated places over Bihar, Chhattisgarh, Konkan & Goa, Madhya Maharashtra, Marathwada and Sub Himalayan West Bengal & Sikkim.
- ❖ **Thunderstorm accompanied with lightning & gusty winds(40-50kmph)** very likely at isolated places over Himachal Pradesh, Jharkhand, Madhya Pradesh, Rajasthan, Rayalaseema, Tamil Nadu Puducherry & Karaikal, Uttar Pradesh, Uttarakhand and Vidarbha.
- ❖ **Thunderstorm accompanied with lightning & gusty winds(30-40kmph)** very likely at isolated places over Assam & Meghalaya, Coastal Andhra Pradesh, Costal Karnataka, Gangetic West Bengal, Haryana, Chandigarh & Delhi, Kerala & Mahe, Nagaland, Manipur, Mizoram and Tripura, Odisha, Punjab, South Interior Karnataka and Telangana.
- ❖ **Thunderstorm accompanied with Lightning** very likely at isolated places over Arunachal Pradesh and Lakshadweep.
- ❖ **Heat Wave conditions** very likely at isolated places over West Rajasthan.
- ❖ **Squally wind with speed 45 kmph to 50 kmph gusting to 55 kmph** likely to prevail along and off Somalia coast, along and off South Sri Lanka coast, over Gulf of Mannar and adjoining Comorin area. **Squally weather with wind speed 35 kmph to 45 kmph gusting to 55 kmph** prevailing along and off south Maharashtra, Goa, Kerala, Karnataka coasts and Lakshadweep area.

21st May (Day 4)

- ❖ **Heavy to Very Heavy Rainfall** likely at isolated places over Costal Karnataka, Konkan & Goa, Madhya Maharashtra and North Interior Karnataka.
- ❖ **Heavy Rainfall** likely at isolated places over Assam & Meghalaya, Bihar, Coastal Andhra Pradesh, Kerala & Mahe, South Interior Karnataka and Sub Himalayan West Bengal & Sikkim.
- ❖ **Thundersquall with wind speed reaching(50-60kmph)** likely at isolated places over Chhattisgarh, Konkan & Goa and Madhya Maharashtra.
- ❖ **Thunderstorm accompanied with lightning & gusty winds(40-50kmph)** likely at isolated places over Jharkhand, Madhya Pradesh, Odisha, Rajasthan, Rayalaseema, Sub Himalayan West Bengal & Sikkim and Uttar Pradesh.
- ❖ **Thunderstorm accompanied with lightning & gusty winds(30-40kmph)** likely at isolated places over Assam & Meghalaya, Bihar, Coastal Andhra Pradesh, Gangetic West Bengal, Haryana, Chandigarh & Delhi, Nagaland, Manipur, Mizoram and Tripura, Punjab, South Interior Karnataka, Telangana and Vidarbha.
- ❖ **Heat Wave conditions** likely at isolated places over West Rajasthan.
- ❖ **Squally wind with speed 45 kmph to 50 kmph gusting to 55 kmph** likely to prevail along and off Somalia coast, along and off South Sri Lanka coast, over Gulf of Mannar and adjoining Comorin area. **Squally weather with wind speed 35 kmph to 45 kmph gusting to 55 kmph** prevailing along and off Maharashtra coast, Goa adjoining Eastcentral Arabian Sea, Kerala, Karnataka coasts and Lakshadweep area.

22nd May (Day 5)

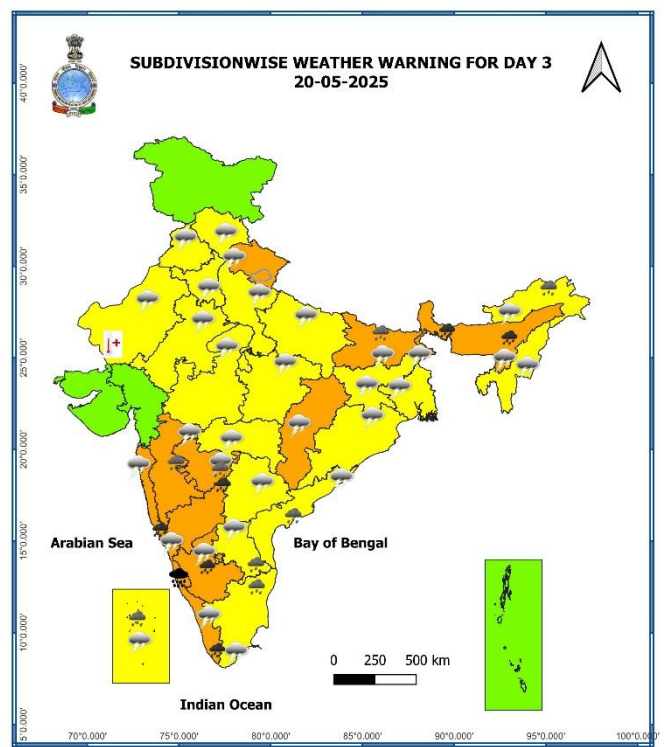
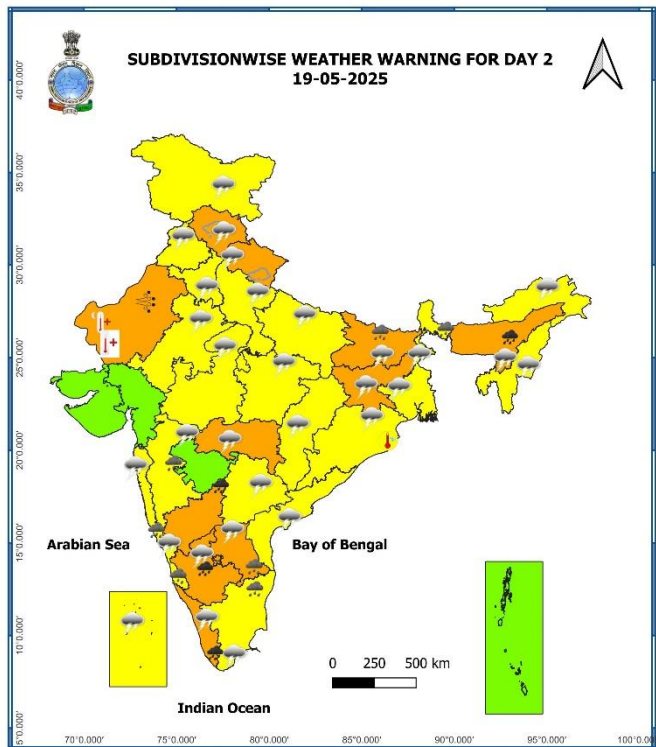
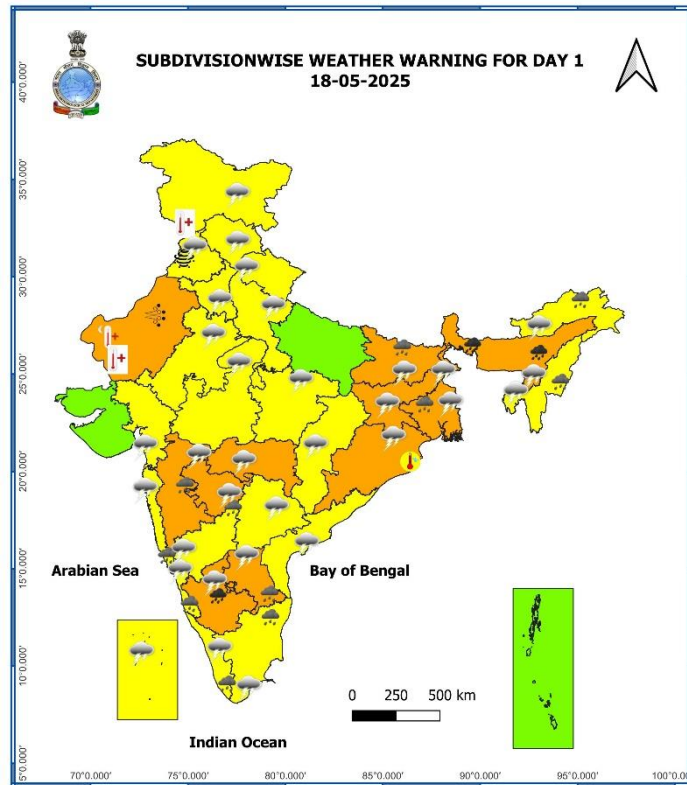
- ❖ **Heavy to Very Heavy Rainfall** likely at isolated places over Costal Karnataka, Konkan & Goa, Madhya Maharashtra and North Interior Karnataka.
- ❖ **Heavy Rainfall** likely at isolated places over Assam & Meghalaya, Bihar, Coastal Andhra Pradesh and Kerala & Mahe.
- ❖ **Thundersquall with wind speed reaching(50-60kmph)** likely at isolated places over East Rajasthan, Konkan & Goa and Madhya Maharashtra.
- ❖ **Thunderstorm accompanied with lightning & gusty winds(40-50kmph)** likely at isolated places over Andhra Pradesh, Chhattisgarh, Jharkhand, Madhya Pradesh, Odisha, Saurashtra & Kutch, Uttarakhand and West Uttar Pradesh.
- ❖ **Thunderstorm accompanied with lightning & gusty winds(30-40kmph)** likely at isolated places over Bihar, East Uttar Pradesh, Gangetic West Bengal, Haryana, Chandigarh & Delhi, Punjab, Telangana and Vidarbha.
- ❖ **Thunderstorm accompanied with Lightning** likely at isolated places over Assam & Meghalaya and Nagaland, Manipur, Mizoram and Tripura.
- ❖ **Heat Wave conditions** likely at isolated places over West Rajasthan.
- ❖ **Squally wind with speed 45 kmph to 50 kmph gusting to 55 kmph** likely to prevail along and off Somalia coast, along and off South Sri Lanka coast, over Gulf of Mannar and adjoining Comorin area. **Squally weather with wind speed 35 kmph to 45 kmph gusting to 55 kmph** prevailing along and off Maharashtra coast, Goa adjoining Eastcentral Arabian Sea, Kerala, Karnataka coasts and Lakshadweep area.

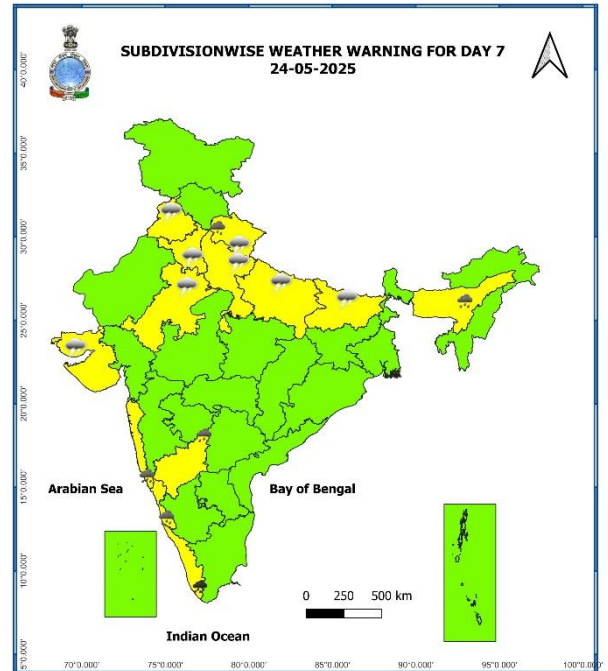
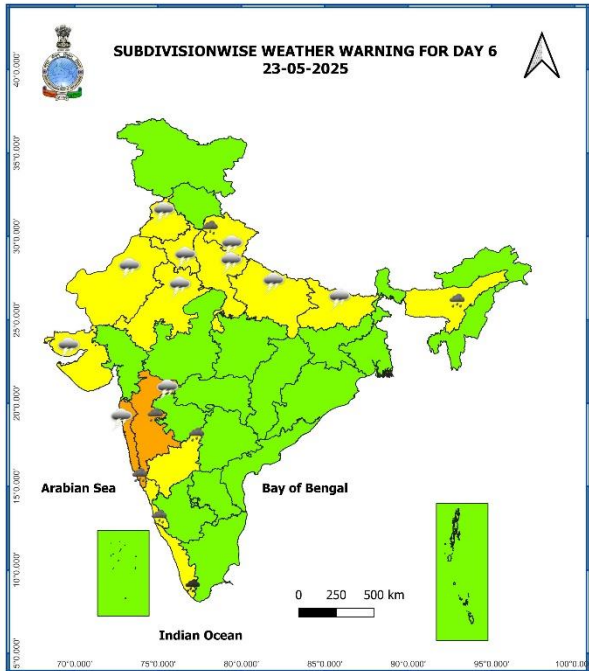
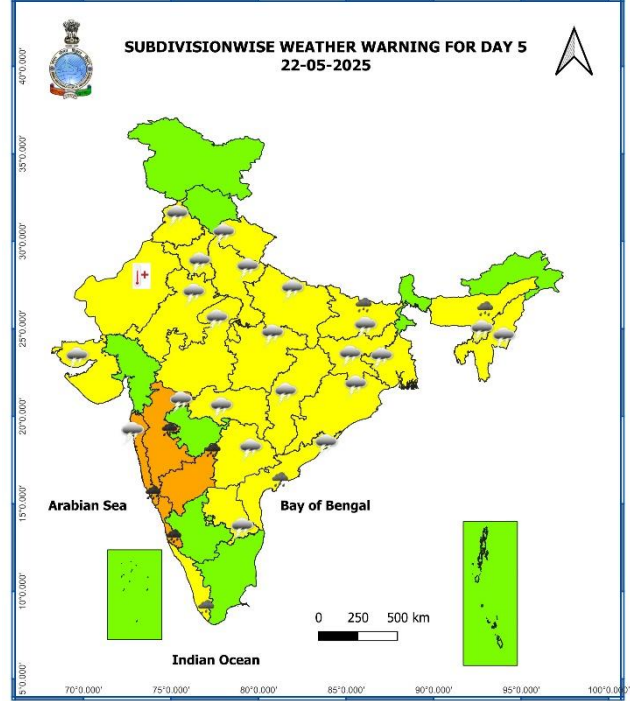
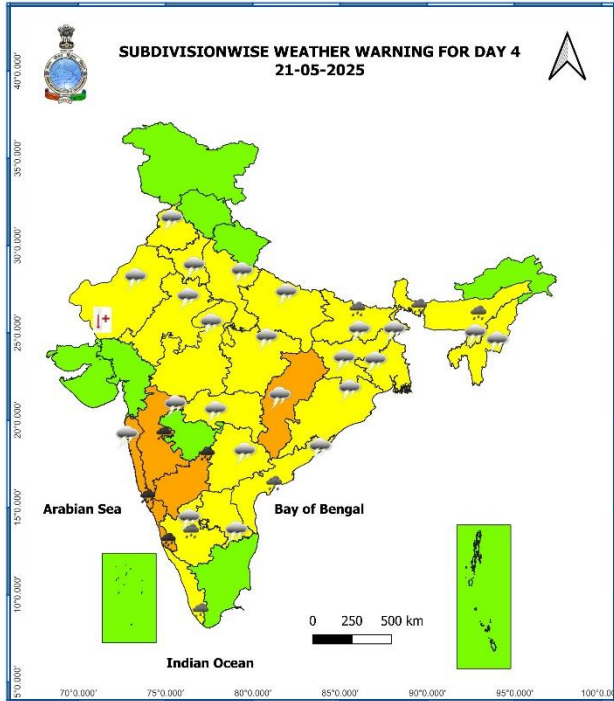
23rd May (Day 6)

- ❖ **Heavy to Very Heavy Rainfall** likely at isolated places over Kerala & Mahe.
- ❖ **Heavy Rainfall** likely at isolated places over Assam & Meghalaya, Costal Karnataka, Konkan & Goa, Madhya Maharashtra, North Interior Karnataka and Uttarakhand.
- ❖ **Thundersquall with wind speed reaching(50-60kmph)** likely at isolated places over East Rajasthan, Konkan & Goa and Madhya Maharashtra.
- ❖ **Thunderstorm accompanied with lightning & gusty winds(40-50kmph)** likely at isolated places over Uttarakhand, West Rajasthan and West Uttar Pradesh.
- ❖ **Thunderstorm accompanied with lightning & gusty winds(30-40kmph)** likely at isolated places over Bihar, East Uttar Pradesh, Haryana, Chandigarh & Delhi, Punjab and Saurashtra & Kutch.

24th May (Day 7)

- ❖ **Heavy to Very Heavy Rainfall** likely at isolated places over Kerala & Mahe.
- ❖ **Heavy Rainfall** likely at isolated places over Assam & Meghalaya, Costal Karnataka, Konkan & Goa, North Interior Karnataka and Uttarakhand.
- ❖ **Thundersquall with wind speed reaching(50-60kmph)** likely at isolated places over East Rajasthan.
- ❖ **Thunderstorm accompanied with lightning & gusty winds(40-50kmph)** likely at isolated places over Uttarakhand.
- ❖ **Thunderstorm accompanied with lightning & gusty winds(30-40kmph)** likely at isolated places over Bihar, Haryana, Chandigarh & Delhi, Punjab, Saurashtra & Kutch and Uttar Pradesh.





- Action may be taken based on **ORANGE AND RED** COLOUR warnings.
- Vulnerable regions likely urban and hilly areas action may be initiated for heavy rainfall warning.
- As the lead period increases forecast accuracy decreases.

Table-1

7 Days Rainfall Forecast								
S. No.	Subdivision	18-May	19-May	20-May	21-May	22-May	23-May	24-May
		Day 1	Day 2	Day 3	Day 4	Day 5	Day 6	Day 7
1	ANDAMAN & NICOBAR ISLANDS	WS	WS	WS	WS	WS	WS	WS
2	ARUNACHAL PRADESH	WS	FWS	FWS	FWS	FWS	FWS	FWS
3	ASSAM & MEGHALAYA	WS	WS	WS	FWS	FWS	FWS	FWS
4	NAGALAND, MANIPUR, MIZORAM & TRIPURA	FWS	FWS	WS	WS	FWS	SCT	SCT
5	SUB-HIMALAYAN WEST BENGAL & SIKKIM	WS	WS	WS	WS	WS	FWS	FWS
6	GANGETIC WEST BENGAL	FWS	FWS	FWS	SCT	SCT	SCT	SCT
7	ODISHA	ISOL	ISOL	ISOL	ISOL	SCT	SCT	SCT
8	JHARKHAND	FWS	FWS	FWS	FWS	SCT	SCT	SCT
9	BIHAR	SCT	SCT	SCT	SCT	ISOL	ISOL	ISOL
10	EAST UTTAR PRADESH	ISOL	ISOL	ISOL	ISOL	ISOL	SCT	SCT
11	WEST UTTAR PRADESH	ISOL	ISOL	ISOL	ISOL	ISOL	ISOL	SCT
12	UTTARAKHAND	ISOL	FWS	SCT	ISOL	ISOL	FWS	FWS
13	HARYANA CHANDIGARH & DELHI	ISOL	ISOL	ISOL	ISOL	ISOL	ISOL	ISOL
14	PUNJAB	ISOL	ISOL	ISOL	ISOL	ISOL	ISOL	ISOL
15	HIMACHAL PRADESH	ISOL	SCT	SCT	ISOL	ISOL	ISOL	ISOL
16	JAMMU & KASHMIR AND LADAKH	SCT	FWS	ISOL	ISOL	ISOL	ISOL	ISOL
17	WEST RAJASTHAN	DRY	DRY	ISOL	ISOL	DRY	ISOL	ISOL
18	EAST RAJASTHAN	ISOL	ISOL	ISOL	ISOL	ISOL	ISOL	ISOL
19	WEST MADHYA PRADESH	ISOL	ISOL	ISOL	SCT	SCT	SCT	SCT
20	EAST MADHYA PRADESH	ISOL	ISOL	ISOL	SCT	SCT	SCT	SCT
21	GUJARAT REGION	ISOL	ISOL	ISOL	SCT	SCT	SCT	SCT
22	SAURASHTRA & KUTCH	ISOL	ISOL	ISOL	ISOL	SCT	SCT	SCT
23	KONKAN & GOA	ISOL	ISOL	SCT	FWS	WS	WS	WS
24	MADHYA MAHARASHTRA	ISOL	ISOL	SCT	SCT	SCT	ISOL	ISOL
25	MARATHAWADA	ISOL	ISOL	SCT	SCT	ISOL	ISOL	ISOL
26	VIDARBHA	SCT	SCT	SCT	ISOL	ISOL	ISOL	ISOL
27	CHHATTISGARH	ISOL	SCT	SCT	SCT	ISOL	ISOL	ISOL
28	COASTAL ANDHRA PRADESH & YANAM	SCT	SCT	SCT	FWS	FWS	SCT	ISOL
29	TELANGANA	SCT	SCT	FWS	FWS	FWS	SCT	SCT
30	RAYALASEEMA	FWS	FWS	FWS	FWS	SCT	ISOL	ISOL
31	TAMILNADU PUDUCHERRY & KARAIKAL	SCT	SCT	SCT	ISOL	ISOL	ISOL	ISOL
32	COASTAL KARNATAKA	WS	WS	WS	WS	WS	WS	WS
33	NORTH INTERIOR KARNATAKA	WS	WS	WS	WS	FWS	SCT	SCT
34	SOUTH INTERIOR KARNATAKA	WS	WS	WS	FWS	SCT	ISOL	SCT
35	KERALA & MAHE	FWS	WS	WS	FWS	FWS	WS	WS
36	LAKSHADWEEP	FWS	WS	WS	FWS	FWS	WS	WS

• As the lead period increases forecast accuracy decreases.

Impact & Action Suggested due to very heavy rainfall over

- ❖ **Extremely heavy rainfall** at isolated places over Coastal Karnataka on 20th May.
- ❖ **Very heavy rainfall** over Assam & Meghalaya, South Interior Karnataka during 18th-20th May. Sub-Himalayan West Bengal & Sikkim on 18th & 20th; Konkan, Coastal Karnataka, Konkan during 20th – 22nd and Madhya Maharashtra, Madhya Maharashtra on 21st & 22nd; over North Interior Karnataka during 19th-22nd; ghats area of Tamil Nadu on 20th May, 2025.

Impact Expected

- ❖ Localized Flooding of roads, water logging in low lying areas and closure of underpasses mainly in urban areas of the above region.
- ❖ Occasional reduction in visibility due to heavy rainfall.
- ❖ Disruption of traffic in major cities due to water logging in roads leading to increased travel time.
- ❖ Minor damage to kutcha roads.
- ❖ Possibilities of damage to vulnerable structure.
- ❖ Localized Landslides/Mudslides
- ❖ Damage to horticulture and standing crops in some areas due to inundation.
- ❖ It may lead to riverine flooding in some river catchments (for riverine flooding please visit Web page of CWC).

Action Suggested

- ❖ Check for traffic congestion on your route before leaving for your destination.
- ❖ Follow any traffic advisories that are issued in this regard.
- ❖ Avoid going to areas that face the water logging problems often.
- ❖ Avoid staying in vulnerable structure.

Impact expected and action suggested due to isolated thunderstorm with lightning/gusty & Squally winds & Hailstorm over

- ✓ **Thundersquall wind speed reaching 50-60 kmph gusting to 70 kmph** over Konkan & Goa during 20th-23rd; Madhya Maharashtra on 18th and during 20th-23rd; Marathwada on 18th & 20th May. Gangetic West Bengal, Odisha on 18th; Sub-Himalayan West Bengal & Sikkim on 20th; Bihar during 18th-20th; Jharkhand, Vidarbha on 18th & 19th; Chhattisgarh during 20th-22nd May.
- ✓ **Isolated hailstorm** very likely over Himachal Pradesh on 19th and over Uttarakhand on 19th & 20th May.

Impact expected:

- Breaking of tree branches, uprooting of large avenue trees. Large dead limbs blown from trees. Damage to Standing crops.
- Minor to Major damage to banana and papaya trees.
- Minor to major damage to power and communication lines due to breaking of branches.
- Strong wind/hail may damage plantation, horticulture and standing crops.
- Hail may injure people and cattle at open places.
- Partial damage to vulnerable structures due to strong winds.
- Minor damage to kutcha houses/walls and huts.
- Loose objects may fly.

Action suggested:

- People are advised to keep a watch on the weather for worsening conditions and be ready to move to safer places accordingly.
- Stay indoors, close windows & doors and avoid travel if possible.
- Take safe shelters; do not take shelter under trees.
- Do not lie on concrete floors and do not lean against concrete walls.
- Unplug electrical/ electronic appliances.

- Immediately get out of water bodies.
- Keep away from all the objects that conduct electricity.

Impact expected and action suggested due to Heat wave conditions over Jammu & Kashmir 18th; West Rajasthan during 18th-22nd May.

Yellow alert Areas

- Moderate temperature & heat is tolerable for general public but moderate health concern likely for vulnerable people e.g. infants, elderly, people with chronic diseases.
- Avoid heat exposure.
- Wear lightweight, light colour, loose, cotton clothes.
- Cover your head, use a cloth, hat or umbrella.

Agromet advisories for likely impact of Heavy Rainfall / Gusty Winds / Heat Wave

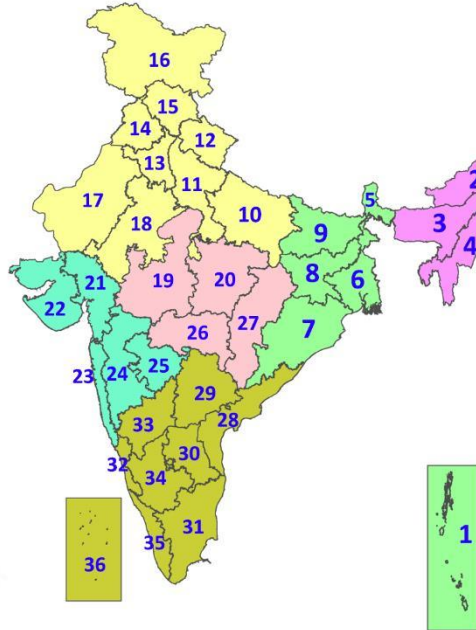
- In **West Bengal & Sikkim, Bihar, Konkan & Goa, Madhya Maharashtra, Tamil Nadu, Kerala, Karnataka, Rayalaseema, Arunachal Pradesh, Assam & Meghalaya, Tripura and Nagaland**, drain excess water and ensure proper drainage in fields with standing crops and vegetables.
- In **Himachal Pradesh and Uttarakhand**, use hail nets and hail caps to prevent mechanical damage in vegetables and orchards due to the possibility of hailstorms.
- Shift the harvested produce in safer places or cover the produce with tarpaulin sheets in the fields. Tie the harvested crops properly and cover them to minimise the risk of displacement due to strong surface winds.
- Provide mechanical support to horticultural crops and staking to vegetables to avoid lodging.
- In **Jammu & Kashmir and Rajasthan**, apply light and frequent irrigation in the evening to protect standing crops, vegetables and orchards from the adverse effects of heat waves and high temperatures.

Livestock / Poultry / Fishery

- Keep the animals inside the shed during heavy rainfall and provide them balanced feed.
- Store feed and fodder in a safe place to prevent spoilage.
- Construct an outlet with proper netting around the ponds to drain out excess water, thereby preventing fish from escaping in case of overflow.
- To reduce the effect of heat wave/high temperature, cover the roof of poultry sheds with grass. Also, provide clean, hygienic and plenty of drinking water to animals.

LEGENDS

1. अंडमान और निकोबार द्वीपसमूह
2. अरुणाचल प्रदेश
3. असम और मेघालय
4. नागालैंड, मणिपुर, मिजोरम और त्रिपुरा
5. उप-हिमालयी पश्चिम बंगाल और सिक्किम
6. गंगीय पश्चिम बंगाल
7. ओडिशा
8. झारखंड
9. बिहार
10. पूर्वी उत्तर प्रदेश
11. पश्चिम उत्तर प्रदेश
12. उत्तराखंड
13. हरियाणा, चंडीगढ़ और दिल्ली
14. पंजाब
15. हिमाचल प्रदेश
16. जम्मू और कश्मीर और लद्दाख
17. पश्चिम राजस्थान
18. पूर्वी राजस्थान
19. पश्चिम मध्य प्रदेश
20. पूर्वी मध्य प्रदेश
21. गुजरात
22. सौराष्ट्र
23. कोंकण और गोवा
24. मध्य महाराष्ट्र
25. मराठवाड़ा
26. विदर्भ
27. छत्तीसगढ़
28. तटीय आंध्र प्रदेश और यनम
29. तेलंगाना
30. रायलसीमा
31. तमिलनाडु, पुडुचेरी और कराईकल
32. तटीय कर्नाटक
33. आंतरिक उत्तरी कर्नाटक
34. आंतरिक दक्षिणी कर्नाटक
35. केरल और माहे
36. लक्षद्वीप



1. Andaman & Nicobar Islands
2. Arunachal Pradesh
3. Assam & Meghalaya
4. Nagaland, Manipur, Mizoram & Tripura
5. Sub-Himalayan West Bengal & Sikkim
6. Gangetic West Bengal
7. Odisha
8. Jharkhand
9. Bihar
10. East Uttar Pradesh
11. West Uttar Pradesh
12. Uttarakhand
13. Haryana, Chandigarh & Delhi
14. Punjab
15. Himachal Pradesh
16. Jammu & Kashmir and Ladakh
17. West Rajasthan
18. East Rajasthan
19. West Madhya Pradesh
20. East Madhya Pradesh
21. Gujarat
22. Saurashtra
23. Konkan & Goa
24. Madhya Maharashtra
25. Marathwada
26. Vidarbha
27. Chhattisgarh
28. Coastal Andhra Pradesh & Yanam
29. Telangana
30. Rayalaseema
31. Tamilnadu, Puducherry & Karaikal
32. Coastal Karnataka
33. North Interior Karnataka
34. South Interior Karnataka
35. Kerala & Mahe
36. Lakshadweep

SPATIAL DISTRIBUTION (% of Stations reporting)

% Stations	Category	% Stations	Category
76-100	Widespread (WS/Most Places)	26-50	Scattered (SCT/A Few Places)
51-75	Fairly Widespread (FWS/Many Places)	1-25	Isolated (ISOL)

- | | | |
|----------------------|----------------------|--------------|
| Fog | Heavy Snow | Cold Wave |
| Heavy Rain | Dust Storm | Cold Day |
| Very Heavy Rain | Heat Wave | Ground Frost |
| Extremely Heavy Rain | Warm Night | |
| Thunder & Lightning | Hot Day | |
| Hailstorm | Hot & Humid | |
| Dust Raising Winds | Strong Surface Winds | |

COLOUR CODED WARNING

- No Warning (No Action)
- Watch (Be Aware)
- Alert (Be Prepared To Take Action)
- Warning (Take Action)

Probabilistic Forecast

Terms	Probability of Occurrence (%)
Unlikely	< 25
Likely	25 - 50
Very Likely	50 - 75
Most Likely	> 75

DEFINITION/CRITERIA

Rain/ Snow *

Heavy: 64.5 to 115.5 mm/cm *

Very Heavy: 115.6 to 204.4 mm/cm *

Extremely Heavy: > 204.4 mm/cm *

Heat Wave

When maximum temperature of a station reaches $\geq 40^{\circ}\text{C}$ for plains and $\geq 30^{\circ}\text{C}$ for hilly regions

(a) Based on Departure from normal

Heat Wave: Maximum Temperature Departure from normal 4.5°C to 6.4°C .

Severe Heat Wave: Maximum Temperature Departure from normal $\geq 6.5^{\circ}\text{C}$

(b). Based on Actual maximum temperature

Heat Wave: When actual maximum temperature $\geq 45^{\circ}\text{C}$.

Severe Heat Wave: When actual maximum temperature $\geq 47^{\circ}\text{C}$

(c). Criteria for heat wave for coastal stations

When maximum temperature departure is $> 4.5^{\circ}\text{C}$ from normal. Heat Wave may be described provided maximum temperature $\geq 37^{\circ}\text{C}$

Warm Night

When maximum temperature remains 40°C

Warm Night: When minimum temperature departure 4.5°C to 6.4°C .

Severe Warm Night: When minimum temperature departure $> 6.4^{\circ}\text{C}$.

Cold Wave

When minimum temperature of a station $\leq 10^{\circ}\text{C}$ for plains and $\leq 0^{\circ}\text{C}$ for hilly regions.

(a). Based on departure

Cold Wave: Minimum Temperature Departure from normal -4.5°C to -6.4°C .

Severe Cold Wave: Minimum Temperature Departure from normal $\leq -6.5^{\circ}\text{C}$

(b) Based on actual Minimum Temperature (for Plains only)

Cold Wave : When Minimum Temperature is $\leq 4.0^{\circ}\text{C}$

Severe Cold Wave: When Minimum Temperature is $\leq 2.0^{\circ}\text{C}$

(c) For Coastal Stations

When Minimum Temperature departure is $\leq -4.5^{\circ}\text{C}$ & actual Minimum Temperature is $\leq 15^{\circ}\text{C}$

Cold Day

When minimum temperature of a station $\leq 10^{\circ}\text{C}$ for plains and $\leq 0^{\circ}\text{C}$ for hilly regions

Based on departure

Cold Day: Maximum Temperature Departure from normal -4.5°C to -6.4°C .

Severe Cold Day: Maximum Temperature Departure from normal $\leq -6.5^{\circ}\text{C}$

Fog

Phenomenon of small droplets suspended in air and the horizontal visibility $< 1\text{km}$

Moderate Fog: When the visibility between 500-200 metres

Dense Fog: when the visibility between 50- 200 metres

Very Dense Fog: when the visibility < 50 metres

Thunderstorm

Sudden electrical discharges manifested by a flash of light (Lightning) and a sharp rumbling sound (thunder)

Dust/Sand Storm

An ensemble of particles of dust or sand energetically lifted to great heights by a strong and turbulent wind.

Frost

Ice deposits on ground

Air temperature $\leq 4^{\circ}\text{C}$ (over Plains)

Squall

A strong wind that rises suddenly, lasts for atleast 1 minute.

Moderate: Wind speed 52-61 kmph

Severe: Wind speed 62-87 kmph

Very Severe: Wind speed > 87 kmph

Sea State

Effect of various waves in the sea over specific area

Rough to very rough: Wind speed 41-62 kmph (22-33 knots) & Wave height 2.5-6 metre

High to very high: Wind speed 63-117 kmph (34-63 knots) & Wave height 6-14 metre

Phenomenal: Wind speed > 117 kmph (> 63 knots) & Wave height > 14 metre

Cyclone

Cyclonic Storm: Wind speed 62-87 kmph (34-47 knots)

Severe Cyclonic Storm: Wind speed 88-117 kmph (48-63 knots)

Very Severe Cyclonic Storm: Wind speed 118-165 kmph (64 - 89 knots)

Extremely Severe Cyclonic Storm: Wind speed 166-220 kmph (90 -119 knots)

Super Cyclone Storm: Wind speed > 220 kmph (> 119 knots)

* Red colour warning does not mean "Red Alert", Red colour warning means "Take Action".

Forecast and Warning for any day is valid from 0830 hours IST of day till 0830 hours IST of next day.

For more details, kindly visit <https://mausam.imd.gov.in> or contact: 011-2434-4599

(Service to the Nation since 1875)

Hot and Humid: When maximum temperatures remains 3°C above normal along with the above normal relative humidity.