

## DISASTER MANAGEMENT ACTION PLAN

### District Profile:

Pulwama is surrounded by hilly terrain, which is 2000 Mtrs. above sea level. As per altitude from sea level the district can be divided into three zones i.e. Zone First falls upto the level of 1700 meters. Zone Second falls between 1700 to 2000 mtrs, and Zone Third above 2000 mtrs. Zone First covers the entire area of Tehsil Pulwama, Pampore and a portion of Tehsil Tral. Zone Second major portion of Tehsil Tral is falling under this zone. Forests extending upto alpine height fall in zone Third with a number of meadows. The river Jhelum passes through this district from Anantnag to Srinagar. The water of river Jhelum, a navigated channel is utilized for irrigation purposes through lift irrigation system. The maximum rainfall as recorded in district during the schedule year 1998 was 772.30 mm. Most of the higher reaches in Tehsil Tral experience early snowfall in winters. The district experiences rainfall during the winter and early summer from western disturbances & monsoon rains from July onwards. The district has met with severe drought since a couple of years also.

S. No.	Description	Unit	Magnitude
1.	Geographical Area	Sq. Km	1090
2.	Sub-Divisions	No.	01
3.	Tehsil	No.	08
4.	C.D Block	No.	11
5.	Village	No.	349
6.	Panchayat Halqas	No.	189
7.	Police Stations	No.	06
9.	Municipal Committee	No.	05
10.	Population	Lac persons	5.60 (census 2011)

**DISASTER VULNERABILITY OF THE DISTRICT**  
*Hazard Probability in District*

<b>Earthquake</b>	
1. Past History	Yes
2. Frequency	Zone IV (High Risk Zone)
3. Impact	Whole District
4. Vulnerability	100 % of District Population
<b>Floods/Flash floods</b>	
1. Past History	Yes.
2. Frequency	Likely (Rainy season April- Aug)
3. Impact	Jhelum Belt Throughout its Course
4. Vulnerable Population	1/3rd of District
<b>Drought</b>	
1. Past History	Yes (Summer season)
2. Frequency	Likely.
3. Impact	Whole District
4. Vulnerable Population	Whole District
<b>Landslides / Landslips</b>	
1. Past History	Yes(Rainy season)
2. Frequency	Very likely.
3. Impact	Household and village.
4. Vulnerable Population	8% of the district, higher reaches of District
<b>Wind Storms</b>	
1. Past History	Yes
2. Frequency	very likely
3. Impact	Household and village.
4. Vulnerable Population	8% of the district, higher reaches of District
<b>Building Fire:-</b>	
1. Past History	Yes
2. Frequency	Very Likely ;spring, summer
3. Impact	Household
4. Vulnerable Population	10% of whole District Kutcha House
<b>Accident</b>	
<b>(i)Road</b>	
1. Past History	Yes
2. Frequency	Likely
3. Impact	Whole District
4. Vulnerable Population	Travelers, Pedestrians
<b>(ii) Air</b>	
1. Past History	Yes
2. Frequency	May be
3. Impact	Air base Awantipora is very close to many villages and any air disaster can be detrimental to inhabitants adjacent to the base. District

4. Vulnerable Population	Pulwama is a major corridor connecting domestic flights with the national capital and other northern airports. Hence, susceptible vulnerable population along the corridor is at risk.
<b>iii) Rail</b>	
1. Past History	No (Newly Established Rail Link)
2. Frequency	Maybe
3. Impact	Household
4. Vulnerable Population	Frequent Travelers
<b>(iv) Water</b>	
1. Past History	Yes
2. Frequency	Likely
3. Impact	Household
4. Vulnerable Population	River Ferries
<b>(v) Industrial</b>	
1. Past History	Yes
2. Frequency	Likely
3. Impact	Industrial Complex LassiPora and Cement Plants at Wuyan, Khrewetc Gas Plant at Pampore Stone-quarries who engage in blasting around the hill tracks in higher belts of Pampore, Awantipora
4. Vulnerable Population	Industrial Workers
<b>Epidemic</b>	
1. Past History	Yes
2. Frequency	Likely
3. Impact	Household, Panchayat
4. Vulnerable Population	All
<b>War conventional</b>	
1. Past History	Yes
2. Frequency	May be
3. Impact	Tehsil & Vital Installation
4. Vulnerable Population	Whole District
<b>Civil Strife/Stampede</b>	
1. Past History	Yes
2. Frequency	May be
3. Impact	Tehsil to Whole District
4. Vulnerable Population	Whole District

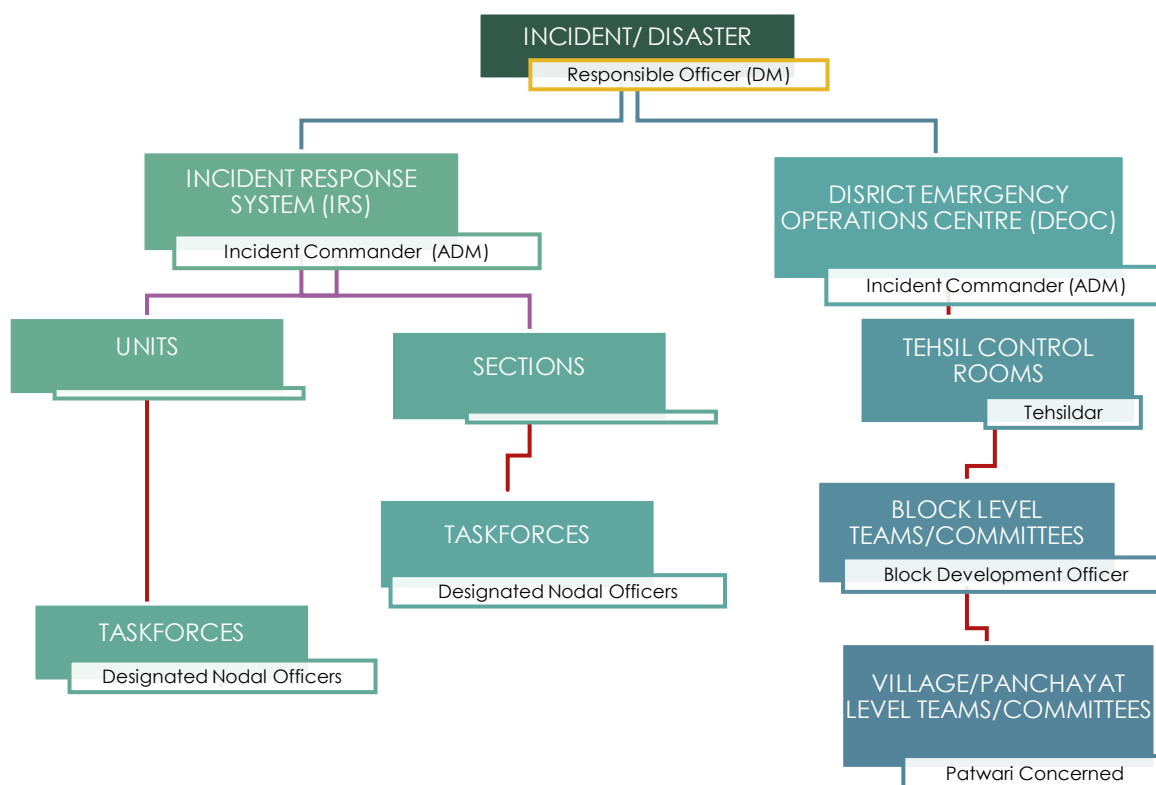
## History of past disasters in the District

The historical records reveal that the district Pulwama has been traditionally vulnerable to natural disasters on account of its unique geo-climatic conditions. Floods, Drought, Landslides and Earthquake have been recurrent phenomena. The recent major disaster, the district has suffered with was September, 2014 Floods resulting colossal loss of life and property.

## INSTITUTIONAL MECHANISM

The Revenue Department of the District would be the Nodal Department for disaster response which includes the coordination of rescue, relief and rehabilitation. All other concerned Line Departments will extend their full cooperation in all the matters pertaining to disaster response. The EOCs, ERC and other Control Rooms at the district level will be activated with full strength.

The institutional framework proposed for facilitating disaster response is given below: -



## DISTRICT DISASTER MANAGEMENT AUTHORITY AND OTHER COMMITTEES

The District Disaster Management Authority is in place, as per SRO 138 Dated 23.04.2007. However, it has been reframed vide SRO-225 dated 29.05.2017 of Disaster Management, Relief, Rehabilitation & Reconstruction Department, J&K and the same has been reflected in the updated District Disaster Management Plan.

In addition to the District Disaster Management Committees, Block Level as well as Village/Panchayat Level Committees have also been put in place.

#### DISTRICT DISASTER MANAGEMENT AUTHORITY

I.	Deputy Commissioner	Chairperson
II.	Additional Deputy Commissioner	Member/CEO
III.	Superintendent of Police	Member
IV.	Chief Medical Officer	Member
V.	Superintending Engineers of R&B, PHE, IFC, EM&RE, MED	Members
VI.	Assistant Director FCS&CA	Member
VII.	Deputy Controller Civil Defence	Member
VIII.	Deputy Director Fire & Emergency Services	Member
IX.	District Disaster Management Officer (HQA to DC)	Member Secretary
X.	Executive Officer Municipal Committee	Member
XI.	In-charge SDRF Component	Member

#### BLOCK LEVEL DISASTER MANAGEMENT COMMITTEE

1.	Block Development Officer	Convenor
2.	Block Medical Officer	Member
3.	Child Development Project Officer	Member
4.	I/C Police Station	Member
5.	I/C SDRF Component	Member
6.	Tehsil Supply Officer	Member
7.	Jr. Engineer R&B/PDD/RDD/I&FC/PHE	Member
8.	Municipal Ward Officer	Member
9.	Civil Defense Warden/Home Guards	Member
10.	Civil Defense Volunteer	Member
11.	Concerned Auqaf President	Member

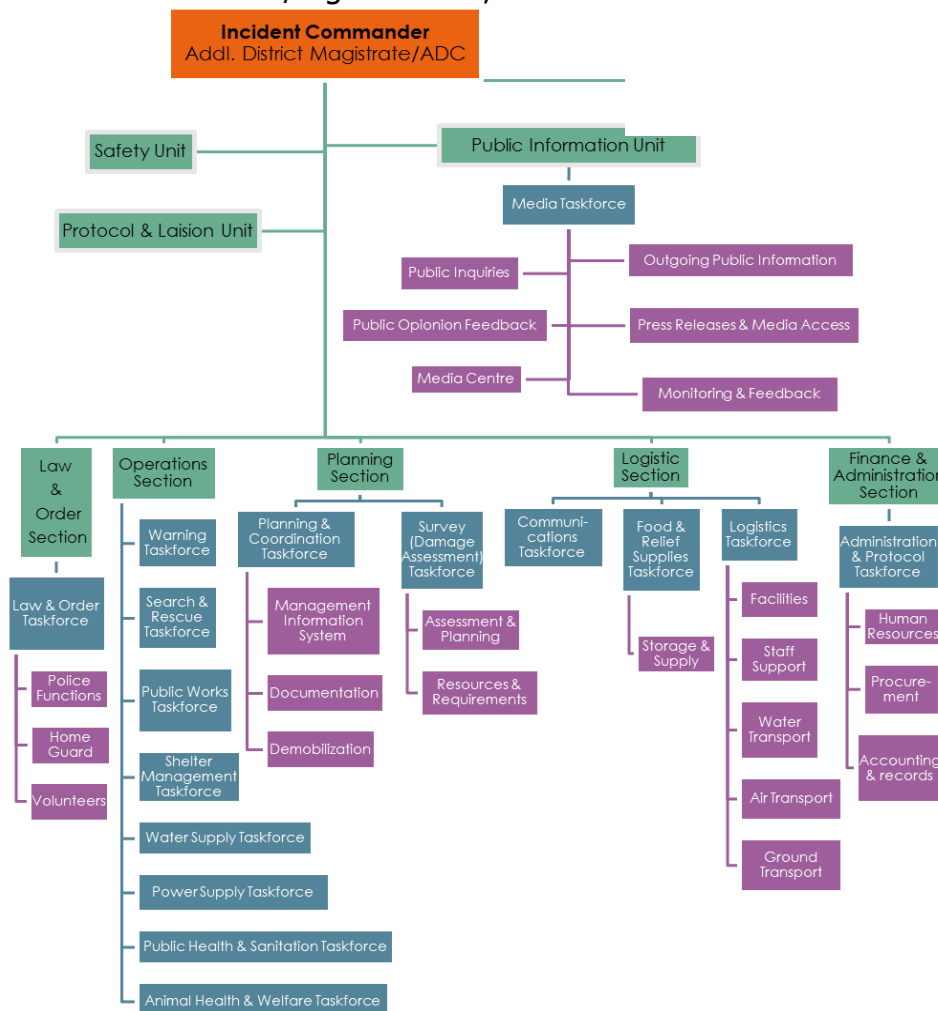
#### VILLAGE LEVEL DISASTER MANAGEMENT COMMITTEE

1.	Patwari Concerned	Convenor
2.	Panchayat Secretary (VLW)	Member
3.	Supervisor Child Care Development	Member

- |     |  |        |
|-----|--|--------|
| 4.  | Sarpanch                               | Member |
| 5.  | Panch                                  | Member |
| 6.  | Lumberdar                              | Member |
| 7.  | Chowkidar                              | Member |
| 8.  | AASHA Worker                           | Member |
| 9.  | Head of Auqaf /Mohalla Committee, etc. | Member |
| 10. | Community Volunteers                   | Member |
| 11. | Local NGO                              | Member |

### INCIDENT RESPONSE SYSTEM (IRS)

For immediate and effective disaster response, Incident Response System for the District has been prepared, in line with the State as well as National Disaster Management Plans and the same has been incorporated in the updated version of District Disaster Management Plan. District Administration is in the process of identifying 16 expected taskforces(referred the following table) for key Response Operation functions, each headed by an Officer In charge and supported by other concerned members/organizations, as under:-



## EMERGENCY OPERATION TASKFORCES

The District administration of Pulwama is in the process of identifying 16 expected Taskforces for key response operation functions that are described below. Each Taskforce is led by one organization and supported by other organizations. The composition of the Taskforces is given:

<b>S. No.</b>	<b>Taskforce</b>	<b>Operations</b>	<b>Nodal Officer</b>	<b>Supporting Members/ Organizations</b>	<b>IRS Section/ Unit</b>
<b>1.</b>	<b>Planning &amp; Coordination</b>	Coordinate early warning, Response & Recovery Operations	District Collector/ DM	Joint Director Planning, Assistant Director Planning, Additional Superintendent of Police	Planning
<b>2.</b>	<b>Administration &amp; Protocol</b>	Support Disaster Operations by efficiently completing the paper work and other Administrative tasks needed to ensure effective and timely relief assistance	Additional District Development Commissioner	Assistant Commissioner Development, Chief Accounts Officer, Additional Superintendent of Police	Finance & Administration
<b>3.</b>	<b>Warning</b>	Collection and dissemination of warnings of potential disasters	Additional Deputy Commissioner	District Information Officer, Executive Engineer Irrigation & Flood Control, Police Control Room.	Operations
<b>4.</b>	<b>Law &amp; Order</b>	Assure the execution of all laws and	Sr. Superintendent of Police	Assistant Commissioner Revenue, Commandant	Law & Order

		maintenance of order in the area affected by the incident		SDRF	
5.	<b>Search &amp; Rescue (including Evacuation)</b>	Provide human and material resources needed to support local evacuation, search and rescue efforts	Deputy Controller, Civil Defense	Deputy Director Fire & Emergency Services, Deputy Superintendent of Police)	Operations
6.	<b>Public Works</b>	Provide the personnel and resources needed to support local efforts to reestablish normally operating infrastructure	Superintending Engineer PW (R&B)	Executive Engineer, Assistant Executive Engineer/Jr. Engineers (concerned)	Operations
7.	<b>Water Supply</b>	Assure the provision of sufficient portable water for human and animal consumption (priority), and water for industrial and agricultural uses as appropriate	Superintending Engineer, Hydraulics	Executive Engineer, PHE Chief Medical Officer, Assistant Executive Engineer/Jr. Engineers (concerned)	Operations



		e			
<b>8.</b>	<b>Food and Relief Supplies</b>	Assure the provision of basic food and other relief needs in the affected communities	Assistant Director, Food, Civil Supplies & Consumer Affairs Department	Supplies Officer with Deputy Commissioner Pulwama, concerned Tehsil Supply Officers, District Red Cross Society	Logistics
<b>9.</b>	<b>Power Supply</b>	Provide the resources to reestablish normal power supplies and systems in affected communities	Superintending Engineer, PDD	Executive Engineer, Assistant Executive Engineer /Jr. Engineers (concerned)	Operations
<b>10.</b>	<b>Public Health and Sanitation</b>	Provide personnel and resources to address pressing public health problems and re-establish normal health care systems	Chief Medical Officer	Community Health Officer, Block Medical Officers, Executive Officers of Municipal Committees	Operations
<b>11.</b>	<b>Animal Health and Welfare</b>	Provision of health and other care to animals affected by a disaster	Chief Animal Husbandry Officer	Sheep Husbandry Officers, Veterinary Assistant Surgeons (concerned)	Operations
<b>12.</b>	<b>Shelter Management</b>	Provide materials and supplies to	Superintending Engineer, R&B	Executive Engineer (R&B) Assistant	Operations

		ensure temporary shelter for disaster-affected population		Executive Engineer /Jr. Engineers (concerned)/ Block Development Officers/ Chief Education Officer	
<b>13.</b>	<b>Logistics</b>	Provide Air, water and Land transport for evacuation and for the storage and delivery of relief supplies in coordination with other Taskforces and competent authorities	Additional Deputy Commissioner	Assistant Regional Transport Officer, MVD Inspectors, SRTC Officials	Logistics
<b>14.</b>	<b>Survey (Damage Assessment)</b>	Collection and analysis of data on the impact of disaster, develop estimates of resources needed and relief plans, and compiling reports on the disaster as required for District and State authorities	Additional District Development Commissioner	<b>a) Infrastructure:</b> Assistant Executive Engineer (R&B) /Jr. Engineers R&B (concerned), Tehsildars <b>b) Crops:-</b> Chief Agriculture Officer, Chief Horticulture Officer, Tehsildars <b>c) Forest:-</b> Divisional Forest Officer, Range Officers <b>d) Human/ Animals:-</b>	Planning

		and other parties as appropriate		Chief Medical Officer, Chief Animal Husbandry Officer, District Sheep Husbandry Officer, Veterinary Assistant Surgeons	
<b>15.</b>	<b>Communications</b>	Coordinate and assure operation of all communication systems (e.g; Radio, TV, Telephones, Wireless) required to support early warning or post disaster operations	Additional District Development Commissioner	District Information Officer, District Informatics Officer, Officers of Cellular Companies BSNL, Airtel, Jio, etc	Logistic
<b>16.</b>	<b>Media (Public Information)</b>	Provide liaison with and assistance to print and electronic media on early warning and post-disaster reporting concerning the disaster	District Information Officer	NGOs, Local Media Organizations, Journalists	Public Information

*Taskforce Control Rooms*

Individual Taskforce shall activate & operate their respective control rooms in their offices, manned by a competent person, who is proficient

in communication and technically capable of coordinating with District Control Room, EOC, ERC, Tehsil/Block Level Control Room and mobilize requisite resources to the disaster site.

#### Facilities at Taskforce Control Rooms

The following facilities should be maintained inside TFCR:

- Telephones
- Facsimile
- Satellite Phone
- Hand held Radios/Base Stations
- Marker Board
- A copy of each Disaster Management Plan and Taskforce Action Plan
- Other relevant documents, if any.

All the Taskforce leaders shall act as per the devised SOPs mentioned in the District Disaster Management Plan in case of any disaster

## PREPAREDNESS MEASURES

### DISTRICT DISASTER MANAGEMENT PLAN:-

- ✓ District Disaster Management Plan-2018 has been formulated and is in the updating phase.
- ✓ Draft School Safety stands forwarded to Chief Education Officer for finalization of School Disaster Management Plan vide this office letter No. DCP/R-N/126/PUL DATED.04/07/2018.

### AVAILABILITY OF RESOURCES IN THE DISTRICT

The primary focus is to enable the decision makers to find solutions on availability of equipment and human resources required to combat any emergency situation. A District Disaster Resource Network has to be established to collect, compile and update information on resources available and integrate with the GIS – based state resource network for timely use. The different agencies involved at the time of (i) collection and compilation, (ii) creating GIS based network and access, (iii) maintaining and updating the network needs to be identified.

The stakeholders as identified includes the Fire and Emergency Services Department, Civil Defence (SDRF), Para Military Forces, Traffic Police, Forest Department, Police, Irrigation & Flood Control Department, Power Development Department, Agriculture Department, Horticulture Department, Food Civil Supplies & Consumer Affairs Department, Veterinary Department, Animal Husbandry Department, Health Department, Government Medical College, Education Board, Social Welfare, Red Cross, Block Development Officers, NGOs.

### DETAILS OF RESOURCES AVAILABLE IN THE DISRICT

The primary focus is to enable the decision makers to find solutions on availability of equipment and human resources required to combat any emergency situation. A District Disaster Resource Network has to be established to collect, compile and update information on resources available and integrate with the GIS – based state resource network for timely use. The different agencies involved at the time of (i) collection and compilation, (ii) creating GIS based network and access, (iii) maintaining and updating the network needs to be identified.

*Table 5.1 Resource Planning for Disaster Preparedness*

Strategies	Task	Responsibility
Resource Mapping	✓ Identify available resources viz. human, financial and equipment for disaster preparedness and response with - Dist. Level - Tehsil level - Village level	Deputy Commissioner; Fire and Emergency Services; Municipal Council/Committees; Civil Defence (SDRF); Para Military Forces; Traffic Police; Forest Department; Police;

	<ul style="list-style-type: none"> <li>- Public sector</li> <li>- Private sector</li> <li>- Community level</li> </ul> <ul style="list-style-type: none"> <li>✓ Identification of gaps of resources as per the need.</li> <li>✓ Delineate processes for procurement of lacking resources.</li> </ul>	Irrigation and Flood Control; Power Development Department; Agriculture Department Horticulture Department; Food, Civil Supplies & Consumer Affairs; Veterinary Department; Animal Husbandry Department; Health Department; Government Medical College; Education Board; Social welfare; Red Cross; Block Development Officers; NGOs.
--	--	---

The stakeholders as identified from above table includes the Fire and Emergency Services Department, Civil Defence (SDRF), Para Military Forces, Traffic Police, Forest Department, Police, Irrigation & Flood Control Department, Power Development Department, Agriculture Department, Horticulture Department, Food Civil Supplies & Consumer Affairs Department, Veterinary Department, Animal Husbandry Department, Health Department, Government Medical College, Education Board, Social Welfare, Red Cross, Block Development Officers, NGOs.

A detailed resource inventory of the District has been formulated and is being updated.

## EMERGENCY CONTACT NUMBERS

<b>Deputy Commissioner Pulwama</b>	<b>Mr. Gh Mohammad Dar</b>	<b>01933 - 241243</b>	<b>241306 242424</b>	<b>241234</b>	<b>9419150994</b>
Addl. Deputy Commissioner Pulwama	Mr. Mohammad Ahsan	241240	241240	241241	9419030228
Addl. DC Awantipora	Mr .Altaf Ahmad Khan	247047			9622760955
Assistant Commissioner Revenue Pulwama	M.r.Qazi Masood	241232		241291	9419069091
Addl. Deputy Commissioner Tral	M.r.Riyaz Ahmad	250116	250116		9419001388
Tehsildar Headquarter	Mr .AB Ahad				9469636449
TehsildarAwanti pora	Mr. Mohammad Younis				9419022386
TehsildarKakapora	Mr. Javed Ahmad	265060			9906801663
TehsildarRajpora	Mr .Sajad Ahmad				9419003793
TehsildarPulwama	Mr. Reyaz Ahmad	241224			9419025425
TehsildarPampore	Mr .Ali Mohd. Najar	222338			9419533223
TehsildarTral	Mr. Mohd. Maqbool	250232			9797051001
TehsildarAripal					
Tehsirdar Litter	Mr. Shakeel Ahmad	218052			9906919599
NaibTehsildarPulwama-I	Mr. Gh.MohammadWani				9419031582
NaibTehsildarPulwama-II	MrNazir Ahmad				9419047483
NaibTehsildarRajpora	MrMohd. Ayoub				9906928554
NiabTehsildarRahmoo	MrManzoor Ahmad Ganie				9086946309
NiabTehsildarPalpora	Mr.				
NaibTehsildarLasipora	Mr.				
NaibTehsildar Litter	MR. GH .MOHD				9797075282
NaibTehsildar Newa	Mr.M Afzal				9906601475
NaibTehsildarLajpora	Mr. Ab Aziz				9419981475

NaibTehsildarKakapora	Mr. Ali Mohd				9419026309
NaibTehsildarKhr ew	Mr. Gh. Mohi u din				9596322159
NaibTehsildarAw natipora	Mr. Altaf Ahmad				8493004271
NaibTehsildarNo orpora	Mr. Manzoor Ahmad Dar				7298743932
NaibTehsildarPa mpore	Mr M yousuf				9469410080
NaibTehsildarTra l	MrEijaz Ahmad				9419050602
NaibTehsildarDa dsara	Mr. Bashir Ahmad				9906945858
NaibTehsildarLur gam	Mr. Gh. Hassan Najar				9858389319
NaibTehsildarAri pal	GH NABI				9622661913
Joint Director Planning	Mr. Gh. Mohammad	241262	241262		9622722244
Assistant Director Planning	MrAssadullah Bhat				9596038348
Section Office Planning	Mr. Manzoor Ahmad				9906867767
P.A to JDP	Surabjeet Singh				9596194671
<b>R&amp;B(PWD)</b>					
Superintending Engineer Pulwama.	Mr. Showkat Ahmad	242407			9419007788
Executive Engineer R&B Division Pulwama	Mr. Sajad Ahmad Naqeeb	241106			9419008795
A.E.E. Hqrs					
A.E.E. Pampore	Mr. Ashiq Hussain Ganaie				9797220555
A.E.E. Tral	Mr. Zahoor Ahmad				9906611551
A.E.E. Rajpora	Mr. Shabir Ahmad Tak				9697907717
Technical Officer	Mr. Nazir Ahmad				9419721162
J.E. Hqrs	MrNisar Ahmad				9906699727
Project Director NHIA	Vipin Sharma				09916000777
Manager National	Gh. Qadar				9797037700



Highway					
Maqbool RAMKAY					9796999962
<b>Mechanical Engineering Department</b>					
Executive Engineer Mechanical Pulwama/Ananat nag		240089			
A.E.E. Pulwama	Mr. Fayaz Ahmad	240089			941902404 7
AE	MrSajad AH				969770131 6
<b>JKPCC</b>					
Managing Director Srinagar.					941901316 0
D.G.M	Mr	240136			941900279 1
A.E.E. JKPCC	MrMaqsood Ahmad				941900522 4
<b>MUNICIPAL COMMITTEES</b>					
E.O Pulwama	Mushtaq Ahmad	241282			941900044 8
E.O Awantipora	MrG.M.Dar	247036			941903162 4
E.O Khrew					941974545 4S
E.O Pampore	MrManzoor Ahmad	223435			700623724 1
E.O tral		250832			959614707 0
Sec Mc Pulwama	Fatima Akhter				946904133 0
Sec Mc Pampore	Assadullah		97979134 44		941948861 1
<b>ARTO OFFICE</b>					
ARTO Pulwama	Mr				
Official	MrJavaid Ahmad			700691147 7	985871221 1
	MrFirdous Ahmad				959617770 3
DSP TRAFFIC			9419045533		
	MrJavaid Ahmad				990670395 7
M D SRTC		2472436			
TC Srinager /RTO k					
<b>Rural Development Department Pulwama.</b>					
Assistant Comm.DPulwam a	Mr. M. MNUAWAR	241336			946971100 6
IWMP Pulwama	MrFayaz Ah				962273255 1
District Panchayat Officer Pulwama	Mr.				

B.D.O Pulwama.	MrAbid Iqbal				941903005 5
B D O Keller					
B D O Kakapora	Mukhtar Ahmad				941901673 1 959651919 5
B D O Pampore	Mr Bilal Ahmad				941900608 1
B D O Tral	MrAnayatull ah		99064918 19		941909191 8
B D O Shadimargh					
B D O Newa	MrHilal Ahmad				990647500 8
B D O Lassipora	MrSuhaib Ahmad				979653636 4
B D O Awantipora.	MR Fayaz AHMAD	7006528998			880347007 0
B D O Dadasar					
B D O Aripal	Mr Farooq Ahmad				979719190 0
<b>Executive Engineer REW Pulwama</b>					
A.E.E. REW Pulwama					
<b>PMGSY</b>					
EXN PMGSY Pulwama	Mr. Nazir Ahmad Banday	242220			941948801 1
A.E.E.	Mr. Manzoor Ahmad				941908419 5
<b>PHE</b>					
Chief Engineer PHE Kashmir		2311832			
S.E. Hydraulic		260250			
EXN PHE Pulwama	Mr. G. A. Beigh	260284			941903430 8
EXN PHE AWT		247152			941914785 0
EXN Mechanical PHE Awantipora	Mr Ab Rashid				990656580 5
A.E.E. PHE Pulwama	Joginder Singh Balla				959618420 3
A.E.E. PHE Tahab	MR Habibullah				941901427 9
A.E.E. PHE Newa					
A.E.E. PHE Rajpora					
A.E.E. PHE Awantipora					
A.E.E. PHE Pampore	MR Aijaz Ahmad				941972984 9
A.E.E. PHE Tral.					

J.E. Pulwama	MR Bashir Ahmad				9419054604
<b>Irrigation Department</b>					
Chief Engineer Irrigation and Flood Control Kashmir Srinagar		3011825			
EXN Mechanical PHE Awantipora	Mr Ab Rashid				9906565805
A.E.E. Irrigation Pulwama	Mh. AYOUB				9858489181
<b>Flood Control</b>					
S.E. Flood Control Ananatnag					
EXN Flood Control Kakapora.	Mr G.H.SOFI				8825040654
AEE Flodd Control Pulwama.	MrFayaz Ahmad			7006157087	9419011646
A.E.E. Flood Control Awantipora	Mr JALAL DIN BHAT				9419016425
A.E.E. Flood Control Tral					
A.E.E. Flood Control Pampore.	MrGulzar Ahmad				9906078322
<b>Industries.</b>					
Director Industries and Commerce					
G M DIC Pulwama	MrShbir Ahmad	241209	241309	-	9419006954
Project Manager DIC Pulwama					
Functional Manager	Mr Ab AZiz				8713099657
Functional Manager	MR .Mohammad Yousuf				9906429583
Functional Manager	MrMoad Iqbal				962282145
Sr. Estates Officer IGC Lassipora					7298725264
Manager IGC Lassipora					
Manager SIDCO					
M.D. SIDCO		430036/440870			
Mir Steel	Mohd. Shafi				969702731

					1
ZumZum Milk Dairy	Mr. Shafat Shah	292293			9419007286
<b>Health Department.</b>					
Chief Medical Officer Pulwama		240412	241205		
Deputy Chief Medical Officer Pulwama	Mir Haseena	241620			
Medical Superintendent District Hospital Pulwama	Ab. Rashid Parra	241530			9906627772
BMO Pulwama	Ramesh Malla	241673			9419765947
BMO Pampore	Dr. Saba	223449		9419026244	7298130005
BMO Tral	Mr. Shakeel Ahmad	250255		9419271613	9622478408
ADMO	Mr. Mohd. Ayoub				9419031375
District Tuberculosis Officer Pulwama	Dr. Zahoor				9419009187
District Coordinator NRHM Pulwama	Miss Uzma Shah				9906738899
<b>Animal Husbandry Department</b>					
Chief Animal Husbandry Officer Pulwama	Dr. Nazir Ahmad	241276			9419031981
<b>District Sheep Husbandry Officer Pulwama.</b>					
District Sheep Husbandry Officer Pulwama	Dr. Mohd. Shafi	241215			9419044407
<b>Education</b>					
Chief Education Officer Pulwama		242234			9419048848
Principal DIET Pampore					9596500035
Deputy Chief Education Officer Pulwama.		241250			
Principal Degree College Pulwama		242370		9622624675	9419024884
Principal Degree College for Women Pulwama					9419024864
Principal Degree College Pampore		251378			9596040661
Principal Degree College Tral					9419534394
<b>Social Welfare Officer Pulwama</b>					
Director Social Welfare Officer Kashmir Sgr.					9419017468
Food & Supplies.& FOOD safety					

AD CAPD	Mr.Reyaz Ahmad	241127		9797062086	9419030015
<b>Agriculture Officer</b>					
Chief Agriculture Officer Pulwama. ADIL---9906571806		241521			9906662640
D A O Extension Officer Saffron Mission					9697918511
Nodal Officer(Saffron Mission)	Mr. Nazir Ahmad Bhat				9596006602 9622930656
<b>Horticulture Department</b>					
Chief Horticulture Officer Pulwama	R K KOTWALL	242888	240045		9419259575
<b>Police</b>					
SSP PULWAMA		241237	241932		8491942801
SSP AWANTIPORA		247202			
<b>Fire &amp; Emergency Pulwanma.</b>					
Assistant Director Fire & Emergency					
Divisional Fire officer					
In Charge Fire Station Tral			250222		8803035531
In Charge Fire Station Awantipora			247331		9697864630
In Charge Fire Station Rajpora					9622822120
In Charge Fire Station Pampore			222041		9906457549
In Charge Fire Station Kakapora			265001		9797068499
In Charge Fire Station Khrew			245200		9906530178

## FLOOD PREPARATION

**Flood Duty Chart has been formulated by the Flood Control Division Kakapora** as reproduced below.

<b>S. No.</b>	<b>Name of the Officer with designation</b>	<b>Assignment</b>
01.	District Development Commissioner Pulwama	Convener
02.	Superintending Engineer Hydraulic Circle Pulwama HQ Shopian	Member Secretary
03.	Senior Superintendent of Police Pulwama	Member
04.	Executive Engineer Flood Control Division Kakapora	Joint member
05.	Chief Medical Officer Pulwama	Member
06.	Assistant Commissioner Development Pulwama	Member
07.	Chief Planning Officer Pulwama	Member
08.	Deputy Registrar Co-operative Pulwama	Member
09.	Assistant Director Food and Supplies Pulwama	Member
10.	Office In-Charge Phones BSNL Pulwama	Member
11.	District Level Officer ARTO Pulwama	Member
12.	Executive Engineer Electric Maintenance Pulwama	Member

**IMPORTANT TELEPHONE NUMBERS OF ZONAL FLOOD  
COMMITTEE KAKAPORA**

<b>S.No</b>	<b>Name of the officers</b>	<b>Office</b>	<b>Mobile</b>
<b>1.</b>	Executive Engineer, Flood Control Division Kakapora. <b>(Member Secretary)</b>	<b>01933-265050</b>	<b>8825040654</b>
<b>2.</b>	Executive Engineer, Irrigation Construction Division Pampore <b>(Member)</b>		<b>9419069492</b>
<b>3.</b>	Executive Engineer Irrigation Division Pulwama. <b>(Joint Secretary)</b>		<b>9419149053</b>
<b>4.</b>	Executive Engineer R & B Division Pulwama. <b>(Member)</b>		<b>9419008795</b>
<b>5.</b>	Assistant Executive Engineer, Divisional Store (Flood Control Division Kakapora) (AE Divisional stores)		<b>9419420776</b>
<b>6.</b>	Assistant Commissioner (Revenue Pulwama)		<b>9906128430</b>
<b>7.</b>	Assistant Commissioner (Development) Pulwama.		<b>9469711006</b>
<b>6.</b>	Deputy Suptt. of Police Pulwama (DR)		<b>9419013181</b>
<b>9.</b>	Medical Officer Kakapora		<b>9419002597</b>
<b>10.</b>	TehsildarKakapora		<b>9906801663</b>
<b>11.</b>	Station House Officer Pulwama.		<b>8491942811</b>
<b>12.</b>	<b>Station House Officer Kakapora</b>	<b>01933-265030</b>	<b>8491942838, 9419380244</b>

**Duty Roster of Beat Officers (Flood Zonal Committee, Kakapora)**

Beat No	Head Quarter.	Jurisdiction of Beat.	Day Shift. 8 AM to 8PM.	Night Shift. 8 PM to 8 Am.	
1.	<p><i>Flood Control Division Kakapora In case Kakapora town gets inundated a control room will shift</i></p> <p><i>Irrigation Division Pulwama.</i></p>	Left side from Gooripora bridge to Kakapora bridge including all confluence points and controlling gates/structures on the reach.	Executive Engineer Irrigation Construction Division Pampore. <b>(9419069492)</b>	Executive Engineer Irrigation Division Pulwama. <b>(9419149053)</b>	
2.		-Do-	-Do-	-Do-	
3.		-Do-	Left side from Kadlabalpampore bridge to ShalinaSempora. including all confluence points and controlling gates/structures on the reach.	-Do-	-Do-
4		-Do-	Rigth side from Kadlabalpampore bridge to Sempora including all confluence points and controlling gates/structures on the reach.	-Do-	-Do-
1	B	Lar Nallah from Koil to Banderpora including all confluence points and controlling gates/structures on the reach.	Executive Engineer R.E.W Pulwama. <b>(9419004170)</b>	Executive Engineer R & B Division Pulwama. <b>(9419008795)</b>	



<b>2</b>		<b>-Do-</b>	Sasaranallah from Rajpora to Koil including all confluence points and controlling gates/structures on the reach.	<b>-Do-</b>	<b>-Do-</b>
<b>3</b>		<b>-Do-</b>	WankranNallah from Tahab to Kawni including all confluence points and controlling gates/structures on the reach.	<b>-Do-</b>	<b>-Do-</b>
<b>4</b>		<b>-Do-</b>	RoomshiNallah from Rehmo to Kakapora including all confluence points and controlling gates/structures on the reach.	<b>-Do-</b>	<b>-Do-</b>

**LIST OF FLOOD STORES TO BE ISSUED TO EACH BEAT OFFICERS**  
**KAKAPORA ZONES**

**Total Number of Beats in Kakapora Zone-08.**

<b>S. No</b>	<b>Particular.</b>	<b>Quantity Required for each Beat.</b>	<b>Total Quantity required in Stores</b>
<b>1.</b>	Empty Cement Bags.	6250 bags	50000 bags.
<b>2.</b>	Search Light	2 Nos	16Nos
<b>3.</b>	Pick axes	6 Nos.	48 Nos
<b>4.</b>	Shovels	6 Nos	48 Nos
<b>5.</b>	Torches	4 Nos	32 Nos
<b>6.</b>	Baskets	8 Nos	64 Nos
<b>7.</b>	Torch cells	8 Nos	64 Nos
<b>9.</b>	Sewing needles	6 Nos	48 Nos
<b>10.</b>	Rain Coat with cap	3 Nos	24 Nos
<b>11.</b>	Sutli	1 ½ Kgs	12 Kgs
<b>12.</b>	Water Can	1 No	8 Nos
<b>13.</b>	Folding Bed	1 No	8 Nos
<b>14.</b>	Plastic Chairs	2 Nos	16 Nos
<b>15.</b>	R.T.C Trucks.	1 Nos	08 Nos
<b>16.</b>	Life Saving Jackets	4 Nos	32 Nos
<b>17.</b>	Long Boots	4 Nos	32 Nos.

### Flood Duty Flood Zonal Committee Kakapora for the year 2017-18

<b>S.No</b>	<b>Particulars of Beat</b>	<b>Head Quarter</b>	<b>Day Shift 9a.m to 6 p.m</b>	<b>Contact Numbers of beat officer(s)</b>	<b>Night shift 6p.m to 9a.m</b>	<b>Contact Numbers of beat officer(s)</b>
<b>Sector (A)</b>						
1	Left embankment of river Jhelum from Goripora to Banderpora lift including sluices, flood gate banderpora and Larnallah. B-1`	Lift station Banderpora	Assistant Executive Engineer PMGSY Sub Division Ist . Division Pulwama along with his two J.E.'s, S.D.C and orderly.	9419076936 7889543266	Assistant Executive Engineer REW Block Kakapora Division Pulwama along with his two J.E's , S.D.C. and orderly.	9697070707 9596444605
2	Left bank Banderpora to Roomshi confluence including Lelhar flood gate and MunshiNallah	Lelhar Gauge Hut	Assistant Executive Engineer PMGSY Sub Division II.Pulwama along with his two J.E.'s, S.D.C and orderly.	8803523470 9419494192 9796353704	Assistant Executive Engineer R& B sub. Division Pampore Division Pulwama along with his two J.E's , S.D.C. and orderly.	9797966881
3	Left bank of river Jhelum from confluence point Roomshi at Kakapora to ShalinaSempora.	Kakapora lift station	Assistant Executive Engineer Irri. Sub. Division Marwal along with his Two J.E's , S.D.C. and orderly.	9797192564 9596247640 7006971366 8715914487	Assistant Executive Engineer MID sub Division. Pulwama along with his two J.E's , S.D.C. and orderly.	9149690958
4	Right side from KadlabalPampore bridge to Sempora including all confluence points	Govt. Higher Secondary School	Assistant Ex. Engineer Flood Control Sub. Division Pampore,	9906078322 7889964648	Assistant Ex. Engineer Electric Sub.	

	and controlling gates/structures on the reach	Pampore	Division Kakapora along with staff.	9419035151 9419001106 7889875265	Division Pampore Division Pulwama. along with his two J.E's , S.D.C. and orderly.	
<b>Sector (B)</b>						
1	Lar Nallah from Koil to Banderpora including all confluence points and controlling gates/structures on the reach	Govt. High School Ratnipora	Assistant Ex. Engineer Irri. Sub. Division Pulwama along with his two J.E's , S.D.C. and orderly.	7006104988 9596506441 7006295826 7006769570	.Assistant Executive Engineer R &B Sub-Division Pulwama along with his two J.E's , S.D.C. and orderly.	9419006042
2	SasaraNallah from Rajpora to Koil including all confluence points and controlling gates/structures on the reach.	Govt. Higher Secondary School Koil.	Asstt. Ex. Engineer REW Block Shadimarg of REW Division Pulwama along with his two J.E's , S.D.C. and orderly.	7006401371 9419006771	Assistant Executive Engineer R&B sub. Division Rajpora along with his two J.E's , S.D.C. and orderly.	9697707717
3	WankranNallah from Tahab to Kawni including all confluence points and controlling gates/structures on the reach.	Govt. High School Kawni.	Assistant Ex. Engineer electric Sub. Division Pulwama Division Pulwama along with his two J.E's , S.D.C. and orderly.	9419401083 8825028363	Assistant Executive Engineer REW Pulwama along with his two J.E's , S.D.C. and orderly.	7006401371 9070222226
4	RoomshiNallah from Rehmo to Kakapora including all confluence	Govt. Primary School Wugurgund	Assistant Ex. Engineer Flood Control Sub-division	7006157087 9797938959	Assistant Ex. Engineer REW Block	9906822287

	points and controlling gates/structures on the reach.	.	Pulwama. along with staff.	9419024023 9419985621 7006163414	Newa Division Pulwama along with his two J.E's , S.D.C. and orderly.	
--	---	---	----------------------------	--	--	--

## CAPACITY BUILDING

### TRAINING OF VOLUNTEERS

All the 300 Volunteers have been identified by the concerned Tehsildars. The list of the same has been received by this office. The training will be provided in consultation with Disaster Management, Relief, Rehabilitation & Reconstruction Department. List of Volunteers has been incorporated in the Resource Inventory of the District. Teachers & students have undergone various Training Programmes by District Disaster Management Authority and Civil Defence Pulwama.

### AWARENESS PROGRAMMES/MOCK EXERCISES

Mock exercises on Disaster Management and Mitigation are being conducted from time to time in various institutions/locations across the District through Civil Defense and NGOs. In the year 2017-18, 12 programmes have been conducted by the DDMA Pulwama in various parts/institutions of the District. Moreover, Chief Education Officer Pulwama has been directed to conduct awareness programmes about the disaster preparedness in all the schools of the District.

### RESPONSE MEASURES

The aim of disaster response measures need to be aimed at rescuing those who are affected or likely to be affected by hazards. This involves minimizing the impact of injuries, loss of life and damage to property and the environment.

#### Activation of District Emergency Operations Centre (EOC)

Disaster response measures include those that are aimed at limiting casualties, alleviating hardship and suffering, restoring essential life support and community systems, avoiding further damage and losses, and providing the foundations for subsequent recovery.

When a disaster strikes, every minute counts for saving lives. Immediate, coordinated and pre-planned response is essential. With a capacity to deal with several simultaneous emergencies in different time zones, around-the-clock, the EOC/ERC is a coordination hub facilitating a coherent response during emergencies helping to cut unnecessary and expensive duplication of efforts.

It collects and analyses real-time information on disasters, monitors hazards, prepares plans for the deployment of experts, teams and equipment in the District, and works with the State to map available assets and coordinate the disaster response efforts. Better planning and the preparation of a set of typical disaster scenarios will further enhance the EOCs/ERCs capacity for rapid response.

Following measures should be taken during the Disasters:-

- 1. Incident Support** - The provision of resources and/or strategic guidance, authorizations, and specific decision-making support. This support may be provided to an Emergency Response Taskforces at a site or in limited circumstances, to another EOC.
- 2. Essential Services and Continuity of Operations** - Ensuring that essential services are maintained, including where possible, in the areas impacted by the emergency.

Under specific circumstances, the EOC may also exercise the following functions:

- **Area Command** - The provision of incident management and oversight to multiple incidents.
- **Incident Command** - The direct management of an incident response.

During disasters, EOC/ERC shall be activated. Emergency Operation Taskforces shall be deployed to the disaster site/sites. All the taskforce leaders shall take position in the District EOC in order to enable one-point coordination and efficient decision making.

#### Activation of Emergency Operation Taskforces

The Incident Response System in the District is activated on warning or occurrence of a disaster. Taskforces are activated according to pre-determined SOPs, and as appropriate for the nature of the hazard or disaster. Activation can be:

- In anticipation of a District level disaster, or
- Occur in response to a specific event or problem in the District.

On activation, coordination of warning and response efforts will operate from the District Control Room (DEOC).

#### Search and Rescue

The District Collector, in conjunction with local authorities will be responsible for the search & rescue operations in an affected region. In doing so, the Collector will be guided by relevant disaster management plans and will be supported by Government Departments and local authorities.

#### Shelter Management

Disaster situations typically result in an immediate need for shelter and protection against an incidence of any disaster. The concerned Government Departments and local authorities would provide temporary shelter, health and sanitation services to rescued victims in order to prevent an outbreak of diseases. All the Disaster Management Centres in the District shall be used as shelter sheds in case of exigencies. The concerned authorities shall make all the necessary arrangements for providing shelters to common masses and prepare a database of the sufferers with full particulars.

## SHELTER HOMES

**Details of temporary rehabilitation centres with management for camping of families likely to be evacuated in case of floods in District Pulwama.**

Location	Capacity (Souls)	Officers In-Charge/ Management				Catchment area 1	Catchment area II	C.A.P.D Facility	Medical Facility
		Name	Desg.	Deptt.	Phone No.				
IUST Awantipora	50,000	MohdYounisBangoon	TehsildarAwantipora	Revenue	9419006081 7006021717	Sail,Chersoo,Bhargam,Donigund,Charligund,Kadlabal,Noorpora,KKoot,Nazbal.	Barsoo,Jawbara,Mirzpora	CB Centre Kralpora Rice =10 Qtls Sugar=5kg K oil=50 Ltrs Blankets=800 LPG=2 cyls	PHC Awantipora
		Fayaz Ahmad	BDO Awantipora	Rural development	7006528996				
		Abdul Majeed Shah	TSO Awantipora	FCS &CA	7051802047				
		Manzoor Ahmad	Medical Assistant	Health	9858836430				
HSS Lethpora	7,000	Ali MohdNajar	TehsildarPampore	Revenue	9419533223	Karnabal,Bujibagh,Patal&Samboora	Lethpora	Govt. Sale Centre Lethpora Rice =10 Qtls Sugar=5kg K oil=50 Ltrs Blankets=800 LPG=2 cyls	New type PHC Lethpora
		Bilal Ahmad Lone	BDO Pampore	Rural development	9419006081				
		Ab Rashid	TSO Pampore	FCS &CA	849181661				
		Mohd. Farooq Bhat	Medical Assistant		9622603812				
Railway Stn.Kakapora	18,000	Shaikh Javaid	TehsildarKakapora	Revenue	9906801663	Lelhar,Kakapora,Ukhoo,Marwal,Kandizal and Khadermoh.	Qazigund,Sethar,Naman,partlyPahoo.	Govt. Sale Centre Pinglana Rice =10 Qtls	PHC Kakapora

		Muikhtar Ahmad Dar	BDO Kakapora	Rural development	9419016731 9596519195			Sugar=5kg K oil=50 Ltrs Blankets=80 0 LPG=2 cyls	
		Jalal Ud Din Dar	TSO Kakapora	FCS &CA	9622778409				
		Tariq Ahmad	Medical Assistant	Health	7006795725				
Malangpora Railway Stn.	12,000	Mr. Shakeel Ahmad	Tehsildar Litter	Revenue	9906919599	Padgampora, Larkipora, and GhatTokena & Aghanjipora.	Beighpora, Gulzarpora.	Govt. Sale Centre Malanpora Rice =10 Qtls Sugar=5kg K oil=50 Ltrs Blankets=80 0 LPG=2 cyls	Sub Centre Malangpora
		Sheikh Enayat	BDO Litter	Rural development	9419091918				
		Gulzar Ahmad	TSO Litter	FCS &CA	9906538364				
		Mushtaq Ah Hajam	Medical Assistant	Health	7006588212				
Panzgam Dar-ul-Uloom	6,000	Altaf Ahmad	NaibTehsildar Awantipora	Revenue	8493004271	Dogripora, Reshipora, Datpora.	Kaawni, Nowgam, Khandaypora	Govt. Sale Centre Malanpora Rice =10 Qtls	PHC Panzgam



		Fayaz Ahmad	BDO Dadasara	Rural development	7006528998			Sugar=5kg K oil=50 Ltrs Blankets=80 0 LPG=2 clys	
		Mohd Ahsan Ahangar	TSO Litter	FCS &CA	9797135648				
		Mohd Iqbal	Medical Assisant	Health	9622444206				

## Communication

The District Administration and local authorities would communicate to the larger community the impact of the disaster and specific activities that are required to be undertaken to minimize the impact. Some of these activities could include precise communication of the impact of disaster and relief measures being taken and generate goodwill among community and other stakeholders. It would also aim at preventing panic reactions, while providing relevant information and handling welfare enquiries. The communication channel will also act as a feedback mechanism on relief measures and urgent needs of various agencies involved in emergency relief measures and relief.

## Preliminary Damage Assessment

Once a disaster strikes, the Government Departments and the local authorities shall carry out a preliminary 'need and loss assessment' and the District Administration shall mobilize resources accordingly. The members of the rapid impact assessment will be officials drawn from various line departments facilitated by the Tehsildar of the affected Tehsils. The rapid impact assessment report will be detrimental to take decisions on the required rescue and relief operations. The preliminary report should be made available within 24 hours of the calamity.

## RECOVERY MEASURES

Recovery is defined as decisions and actions taken after a disaster with a view to restore or improves life and assets of the stricken community, while encouraging and facilitating necessary adjustments to reduce disaster risk. Recovery and Reconstruction (R&R) or comprehensive rehabilitation is the last step in the cycle of disaster management. In addition, this is the phase of new cycle, where the opportunity to reconstruction and rehabilitation should be utilized for building a better, safer and resilient society.

Strategies for restoring physical infrastructure and lifeline services may be:

### **Build Back Better:**

This ensures greater resilience, preparedness; and minimum loss in an event of future disaster.

### **Participatory Planning:**

Infrastructure improvement measures need to be balanced with, or at least be in line with, the social and cultural needs and preferences of beneficiaries

### **Coordination:**

A plan of recovery will help better coordination between various development agencies. Damage Assessment and Need Assessment shall be the basis of recovery planning, various sectors for recovery process may be:

- Essential Services: Essential Commodities (eatables), Health, Water, Sanitation Power, Communication & Transport.
- Infrastructural: Housing, Public Buildings and Roads
- Livelihood: Employment, Agriculture, Cottage Industry, Shops and Establishments.

Basic services such as power, water supply, sanitation, etc. should be restored in shortest possible time. Alternate arrangement of water supply, temporary sanitation facilities can be sought with the help of special agencies. Special arrangements for provision of essential services should be ensured. It can include creating temporary infrastructure for storage and distribution of water supply, running tankers, power supply and sanitation facilities.

Sector-wise event of disaster, every intending Department shall communicate the damage-loss assessment to the district authorities, through proper channel, on the devised formats as given in District Disaster Management Plan.

### LONG TERM RECOVERY PROGRAMME

Disaster recovery typically occurs in phases, with initial efforts dedicated to helping those affected and have immediate needs for housing, food and w Many government agencies, voluntary organizations, and the private sector cooperate to provide assistance and support.

Specialized assistance may be needed to address unique needs that are not satisfied by routine disaster assistance programs. It may also be required for very complex restoration or rebuilding challenges. Community recovery addresses these ongoing needs by taking a holistic, long-term view of critical recovery needs, and coordinating the mobilization of resources at the community levels.

Oftentimes, committees, Taskforces or other means of collaboration formed with the goals of developing specific plans for community recovery, identifying and addressing unmet or specialized needs of individuals and families, locating funding sources, and providing coordination of the many sources of help that may be available to assist. Some collaboration focuses on the community level and relies on the expertise of community planning and economic development professionals. Other collaborations focus on individual and family recovery and are coordinated by social service and volunteer groups. All such efforts help to lay the groundwork for wise decisions about the appropriate use of resources and rebuilding efforts.

#### Short term and long-term recovery programme

Disaster recovery has three distinct but interrelated meanings. First, it is a goal that involves the restoration of normal community activities that were disrupted by disaster impacts – in most people’s minds, exactly as they were before the disaster struck. Second, it is a phase in the emergency management cycle that begins with stabilization of the disaster conditions (the end of the emergency response phase) and ends when the community has returned to its normal routines. Third, it is a process by which the community achieves the goal of normal life.

### REQUIREMENT OF FUNDS

For effective response and coordination of DDMA with SDMA, funds shall be placed at the disposal of the Deputy Commissioner for following purposes:-

S. No.	Item
01.	Establishment of Emergency Operation Centre
02.	Early Warning System
03.	Establishment of Training Centre
04.	Strengthening of DDMA(Including staff & equipments)

