

Needs and Challenges of Forest Fire Management in Madhya Pradesh



Challenges

- Vast area of the state
- Inaccessible areas
- Mahua collection: fires ignited to clear ground
- Traditional burning in certain areas
- Burning of forests for new flush of grasses & tendupatta
- Burning of forests for encroachment
- Revenge fires
- Low community involvement
- Shortage of equipment
- Shortage of staff
- Low allotment of budget
- Unable to implement of working plan/ fire plan provisions due to paucity of resources

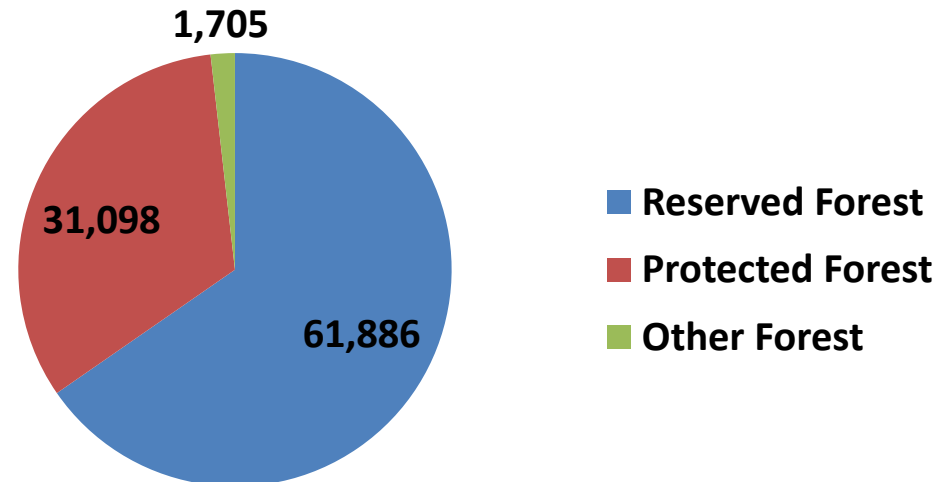
Comparison of Forests of India and MP

	Geographical Area (in Sq. Km.)	Forest Area (in Sq. Km.)	Percentage Forest Area
India	32,87,469	7,13,789	21.70
Madhya Pradesh	3,08,252	77,493	25.14

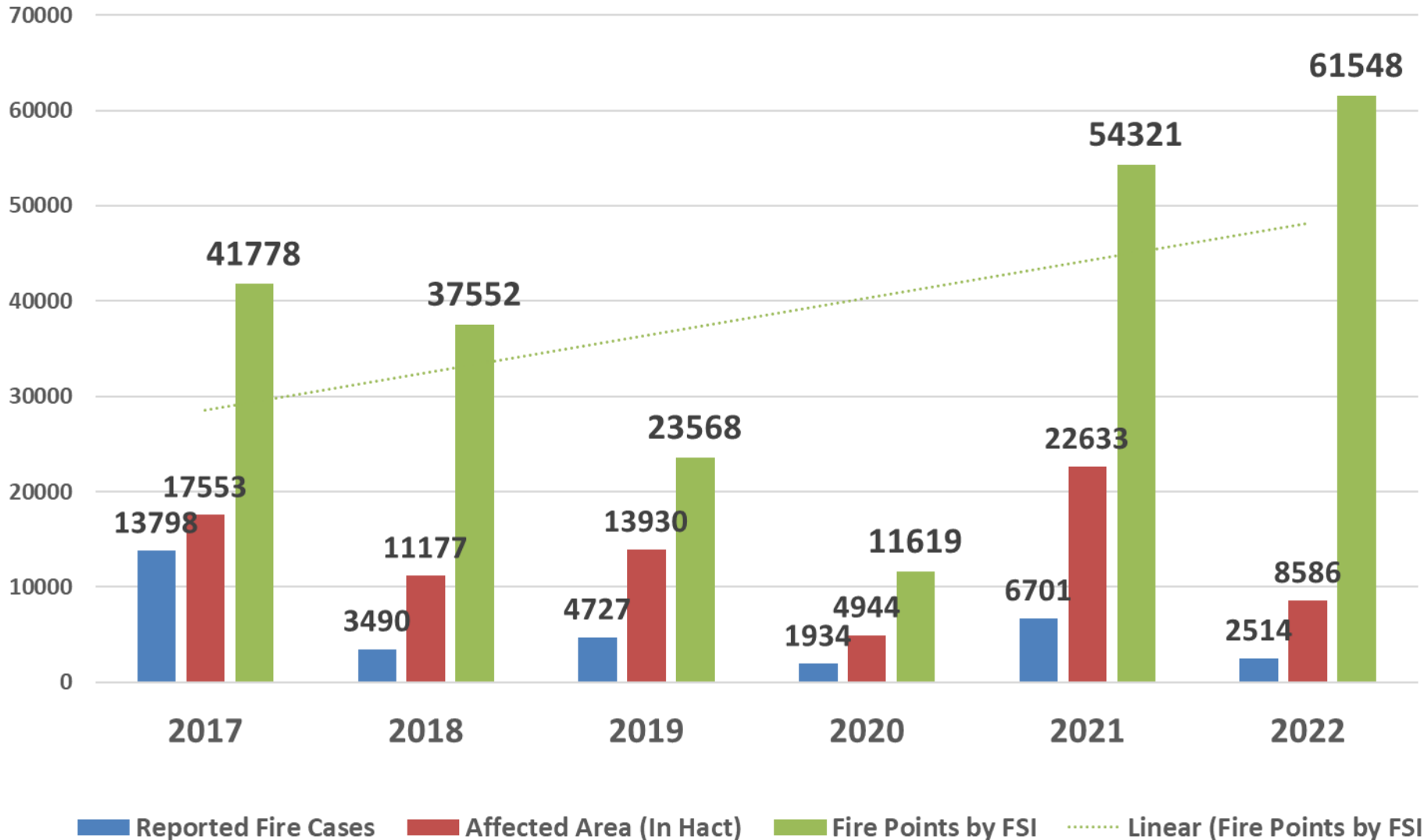
Legal Status

Area (in Sq. Km.)

Reserved Forest	65.36%
Protected Forest	32.84%
Other Forest	1.80%



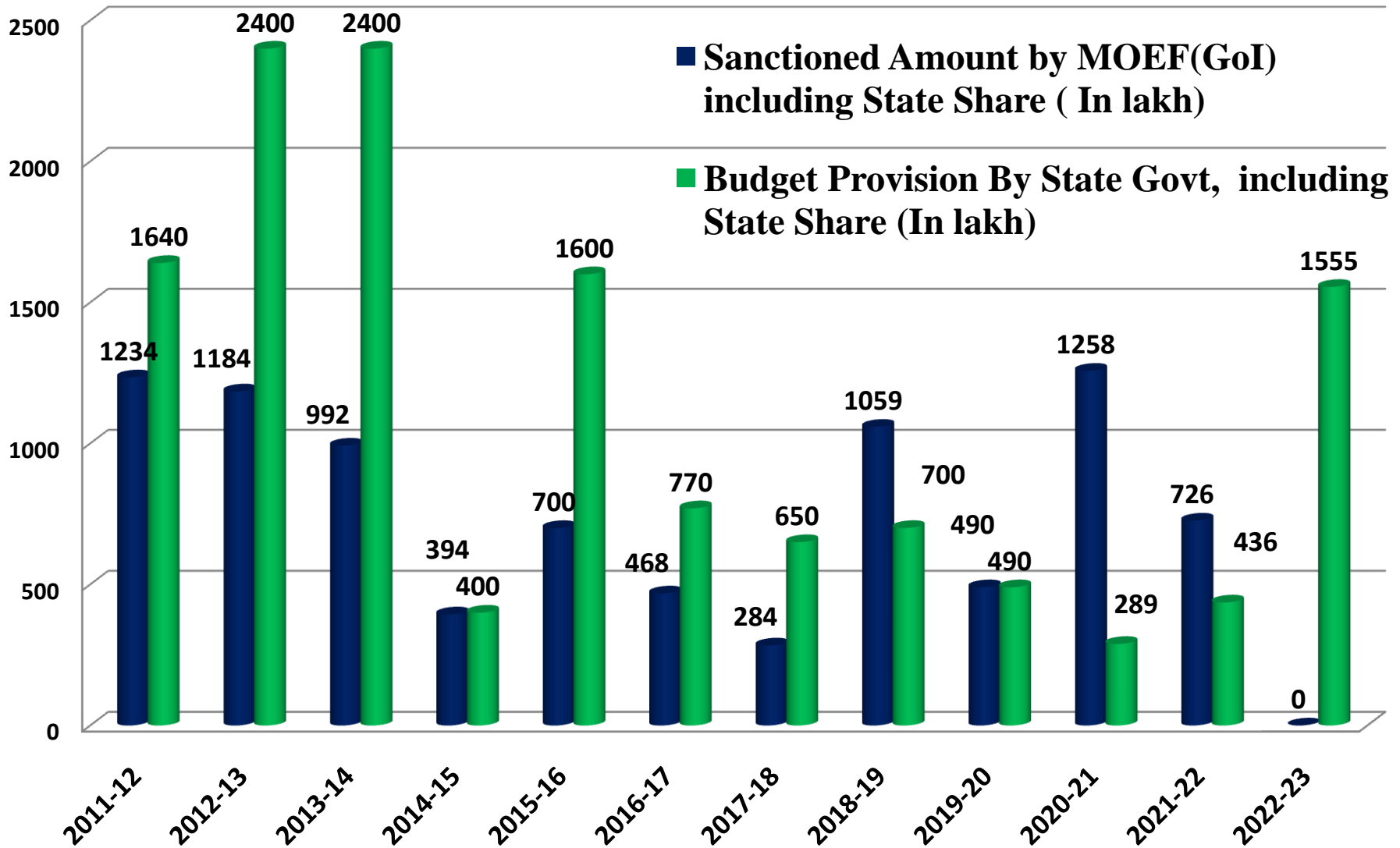
Reported Fire Cases, Affected Area and Fire Points by FSI in last 5 Years



As per the analysis by Dfo North Balaghat against the total alerts of 1138 the real fire points were found to be 455, in Obedullaganj only 680 against 3034 alerts

Forest Fire Prevention and Management Scheme

Status of Budget Allocation (Last 10 years)



Forest Fire Budget Allocation (Last 2 Years)

Financial Year	Campa Scheme	Forest Fire Prevention and Management Scheme (Gol)	7882- implementation of Working Plan
2020-21	592.04 lakh	289.00 lakh	57.00 lakh
2021-22	1950 lakh	97.00 lakh	625.20 lakh

Available Fire Fighting Equipment

(Total Number of Ranges 473)

Type of Equipment	Number of Equipment
Leaf Blower	466
Fire Beaters	5036
Brushwood Cutter	215
Fire Extinguisher	84
Fire Buckets (Forest Depots)	176
Fire Blanket	253
Solar Torch	1011
Fire Jacket	436
Fire Fighting Kits	494
Safety Helmet	916
Safety Goggles	246
First aid kit	228
Water tankers	20

Registered Mobile Numbers of FSI sites

Category Wise Subscription

State Name	State	District	Circle	Division	Range	Block	Beat	Total
MADHYA PRADESH	405	266	265	1338	6717	641	7146	16778 (Approx- 150% increase)
<i>* Till 2021 Total number of mobile registrations were 6886</i>								

STRATEGY

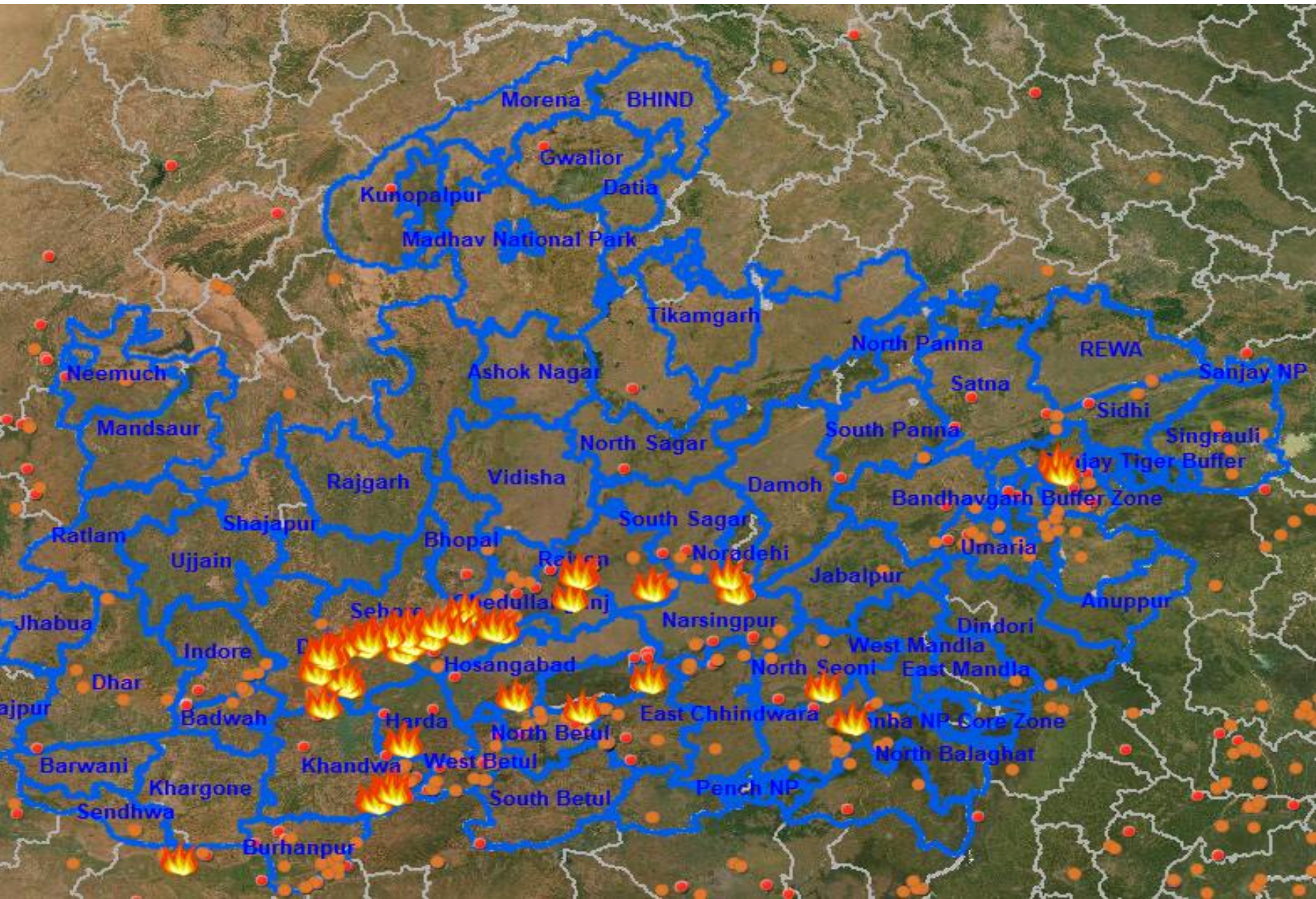
- Effective and efficient response time of less than 4 hrs.
- SimplyFire web
- Computation and generation of division-wise fire maps through utilisation of archival satellite data
- Mobilization of 15628 JFMCs for fire protection activities
- Specialized training through Disaster Management Institute Bhopal
- Centralised and decentralised monitoring and dissemination of near-real time fire point data through social media platform
- Use of machine learning for advance localisation of forest fires through incorporation of multi-level fuel, topography, moisture, wind speed and other datasets

Fire protection through JFMC members



Latitude: 21°27'40"
Longitude: 77°53'40"
Elevation: 658.12±28 m
Accuracy: 4.1 m
Time: 04-30-2022 09:44

Fire Points in MP (SimplyFire Web)





Thanks